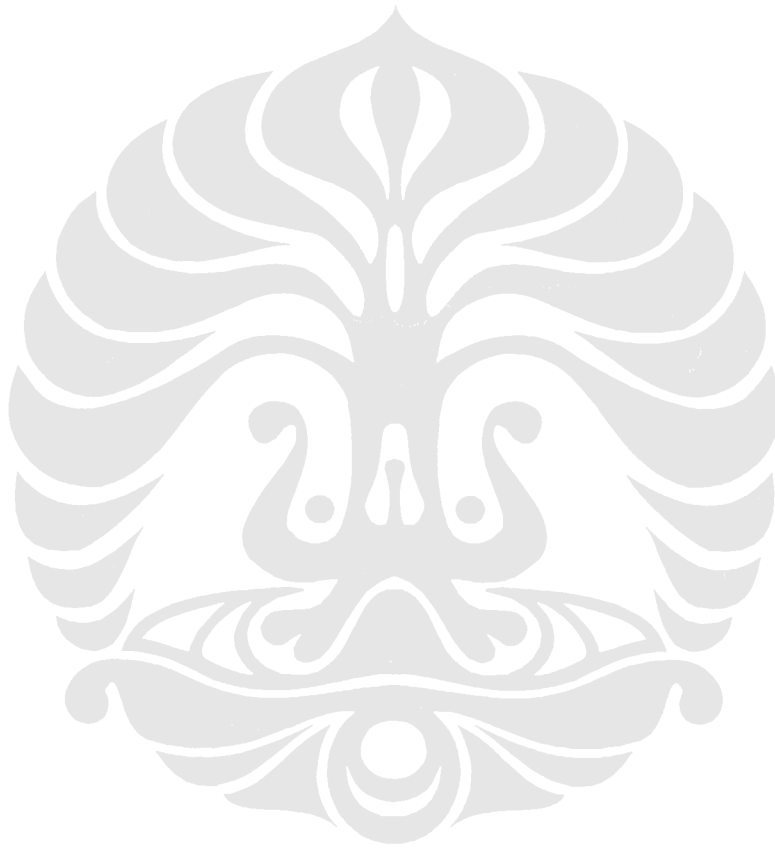
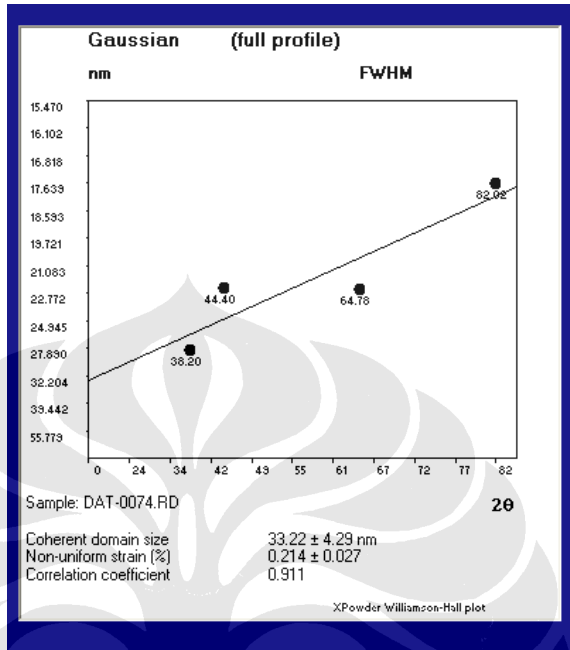


LAMPIRAN A

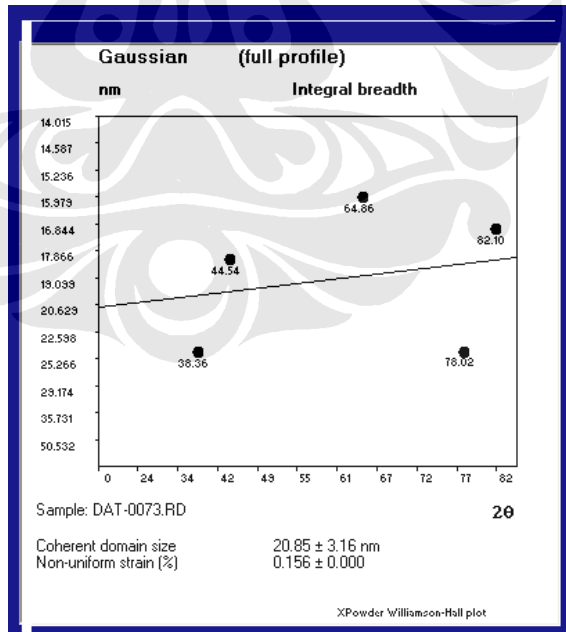
Data Hasil Pengukuran Ukuran Kristalit



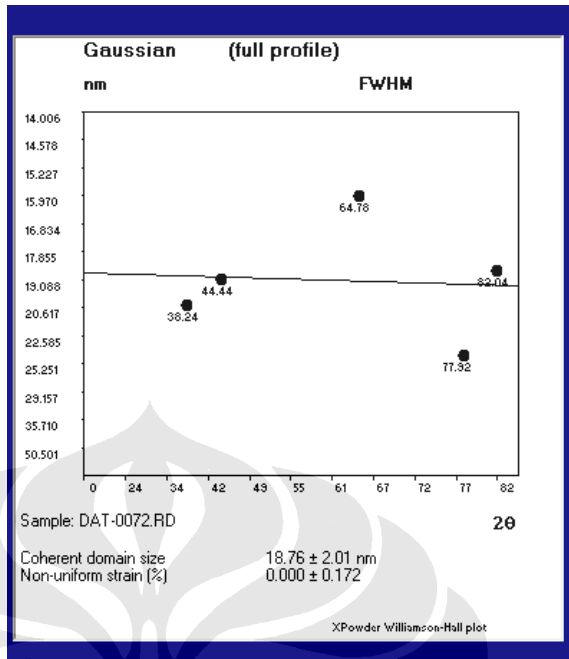
Perhitungan ukuran Kristalit serbuk Fe-30%at.Al



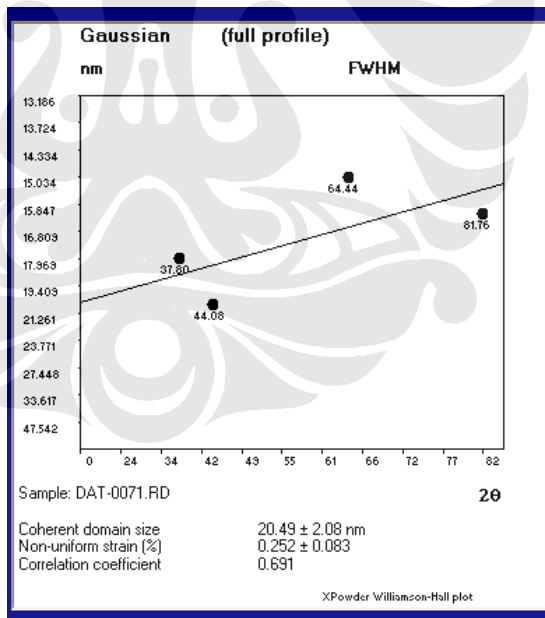
4 jam milling



8 jam milling

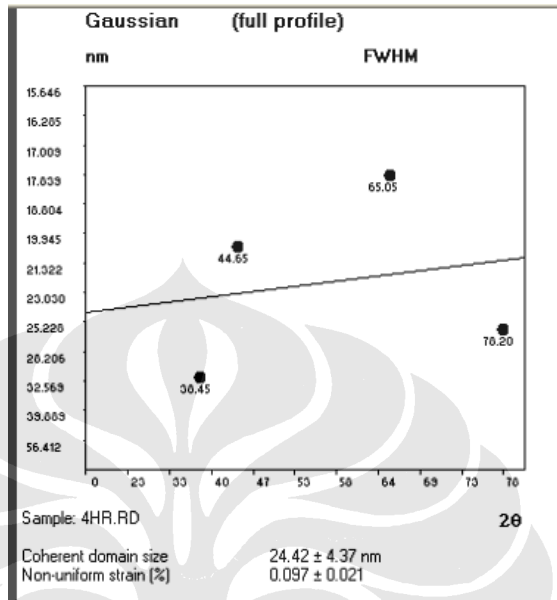


16 jam jam milling

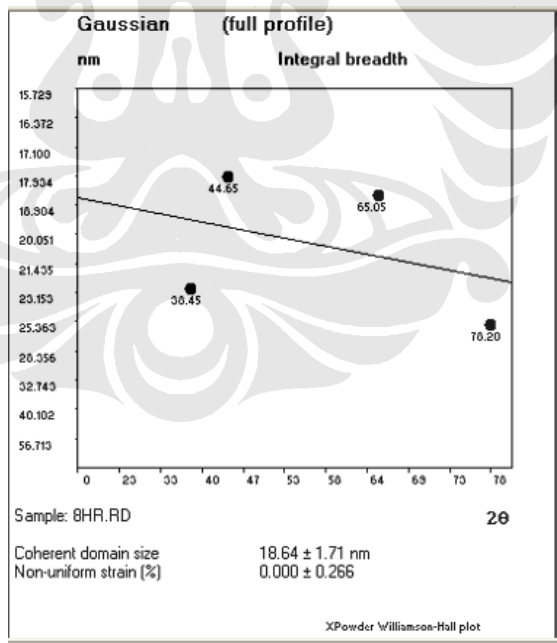


32 jam jam milling

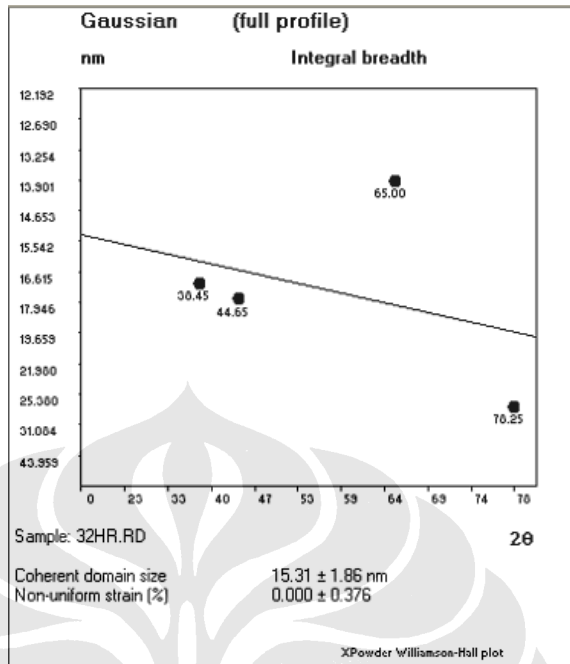
Perhitungan ukuran Kristalit serbuk Fe-40%at.Al



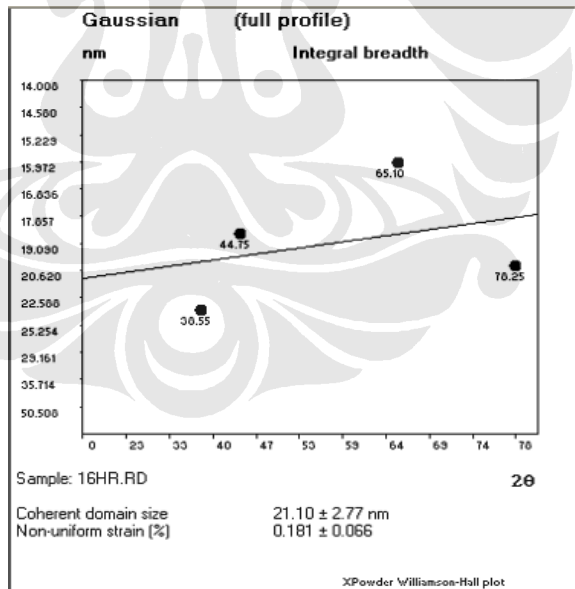
4 jam milling



8 jam milling

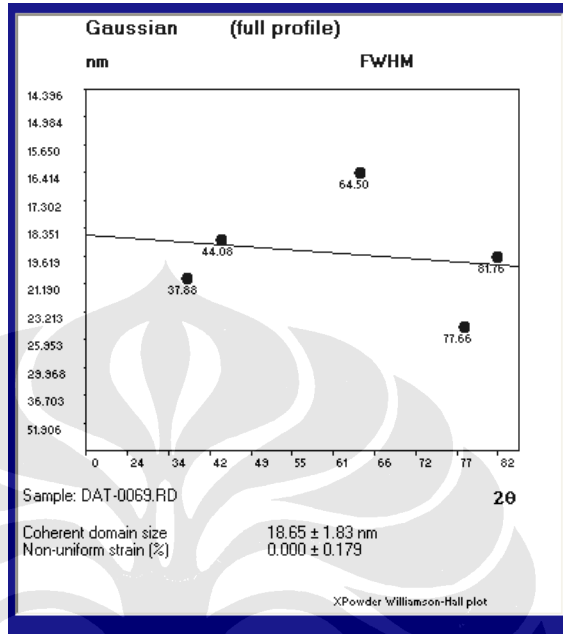


16 jam milling

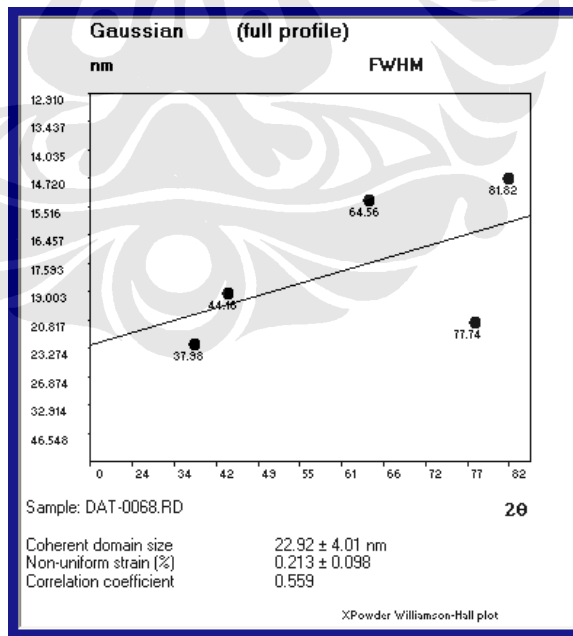


32 jam milling

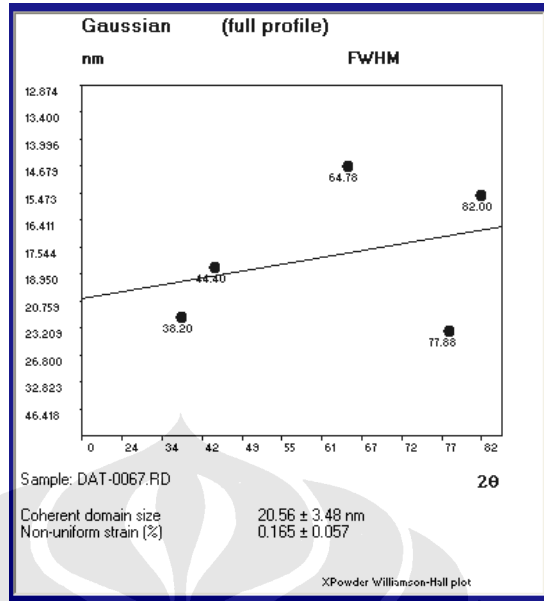
Perhitungan ukuran Kristalit serbuk Fe-50%at.Al



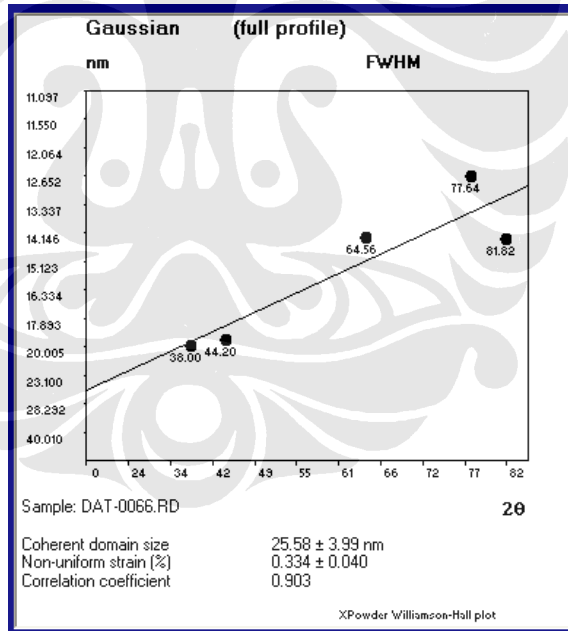
4 jam milling



8 jam milling

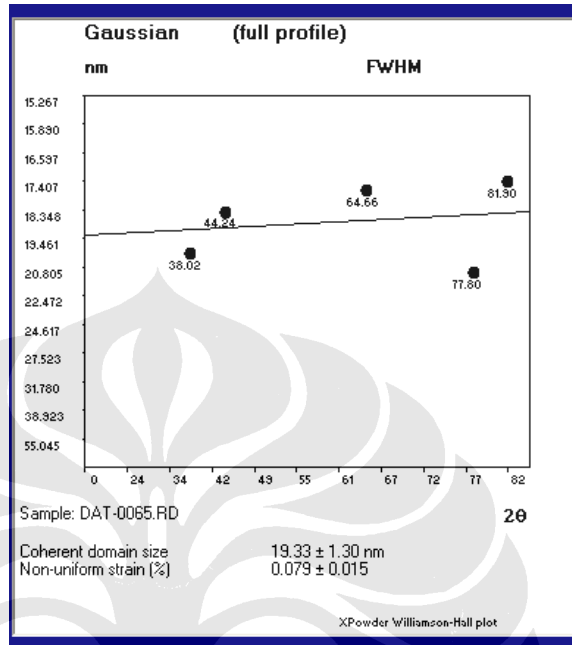


16 jam milling

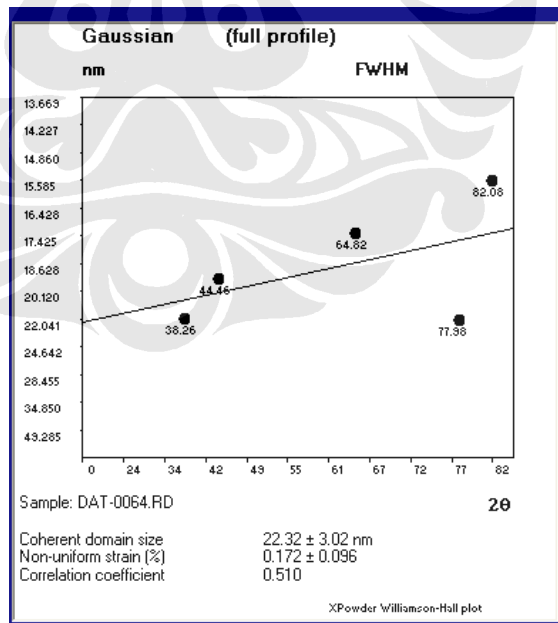


32 jam milling

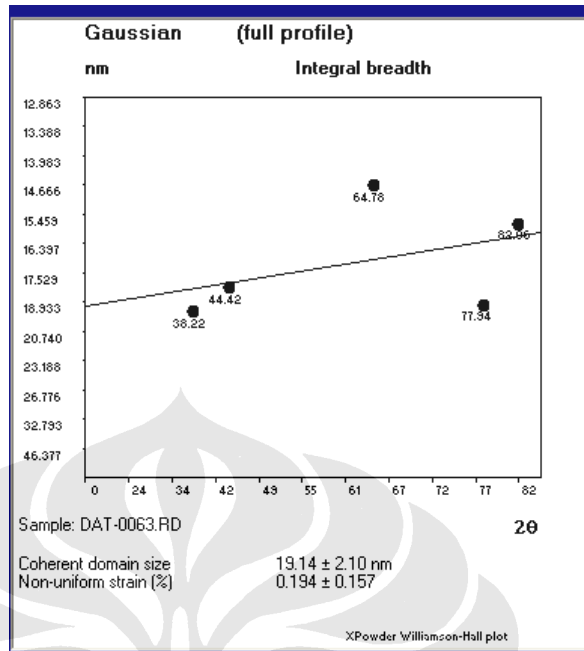
Perhitungan ukuran Kristalit serbuk Fe-60%at.Al



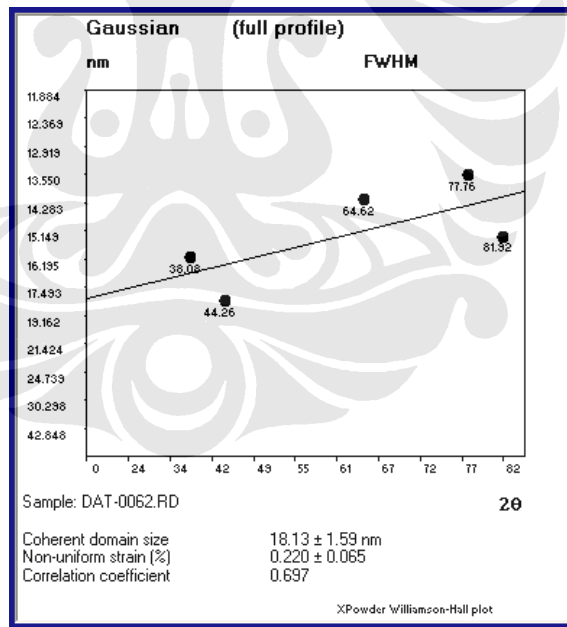
4 jam milling



8 jam milling



16 jam milling

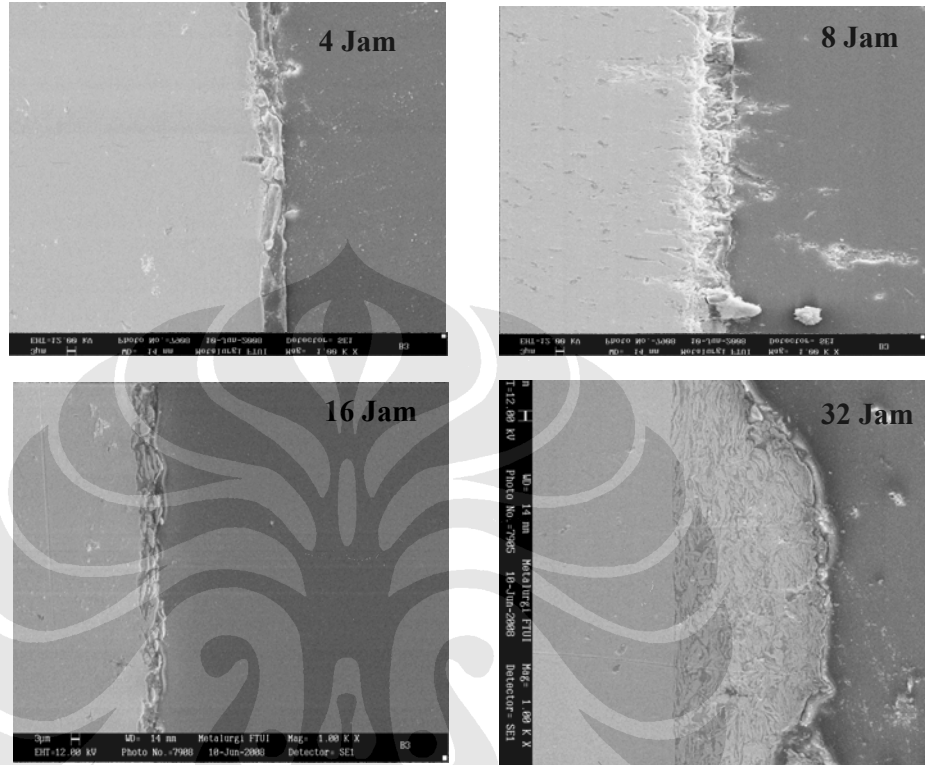


32 jam milling

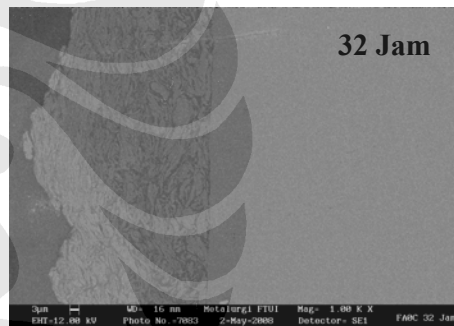
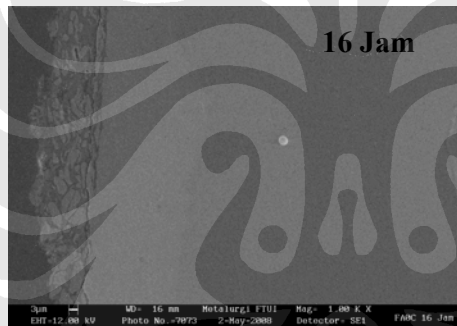
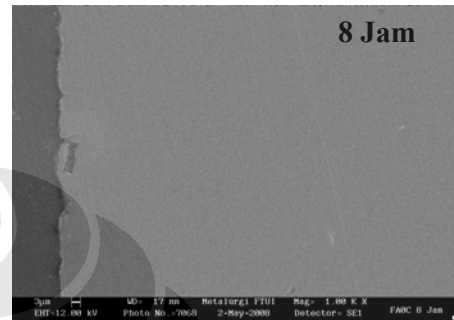
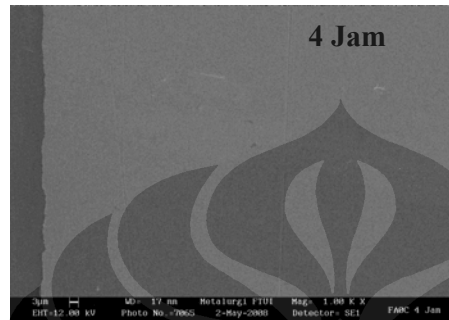
LAMPIRAN B



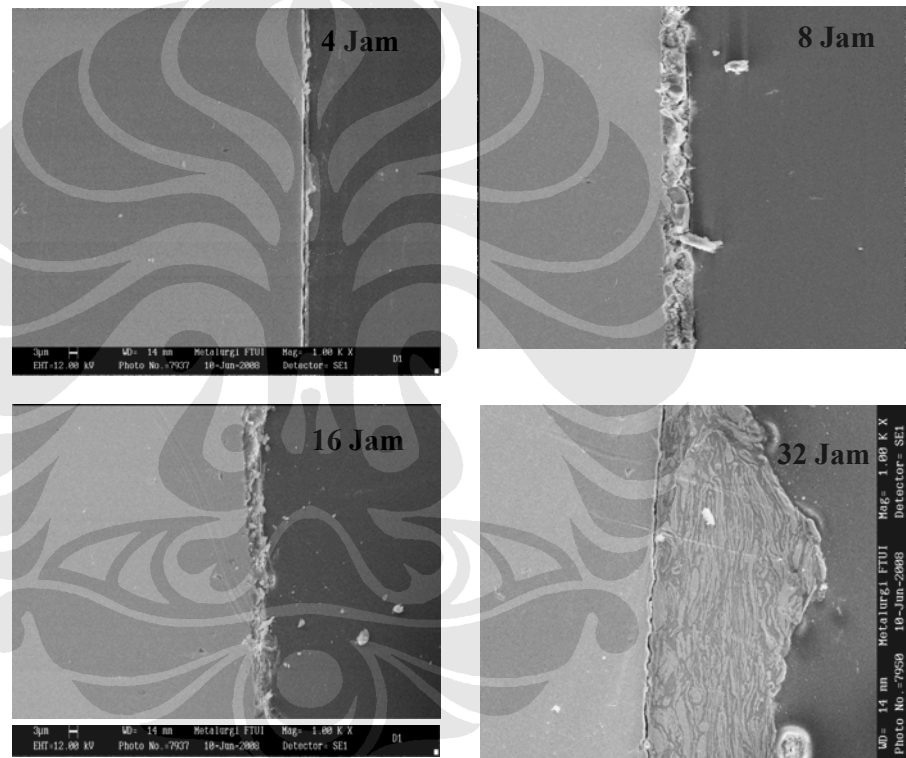
LAPISAN Fe-30%at.Al



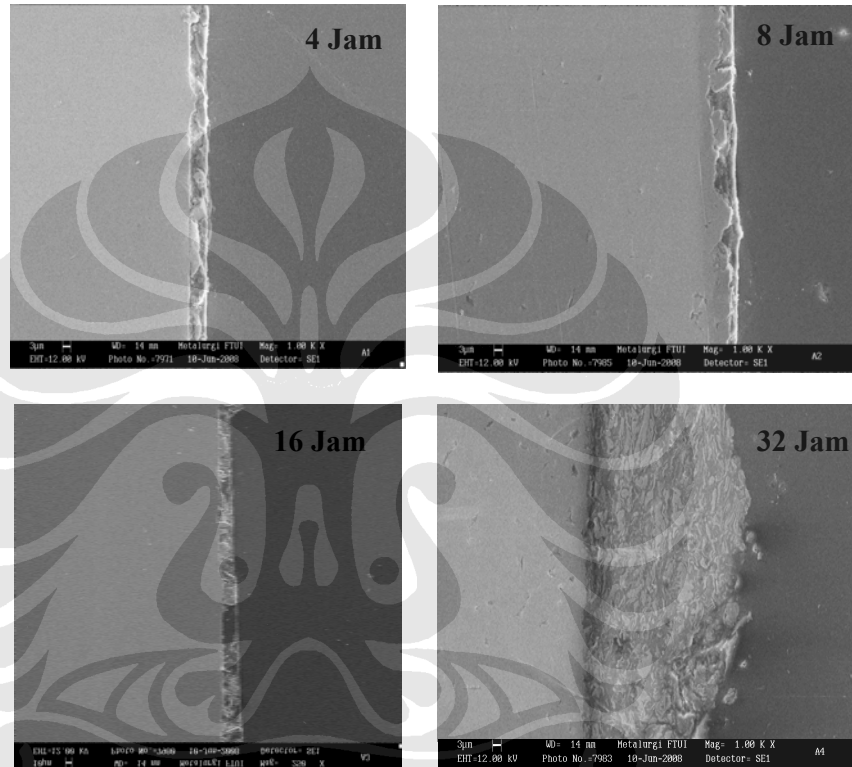
LAPISAN Fe-40%at.Al



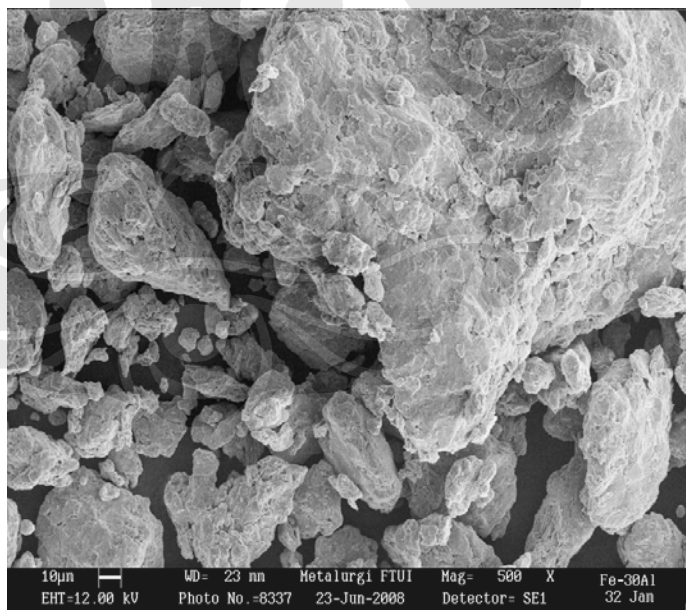
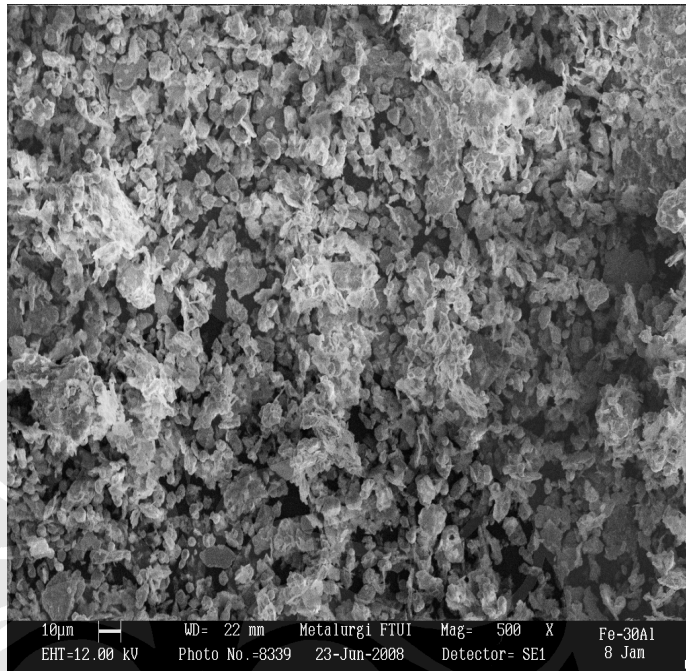
LAPISAN Fe-50%at.Al



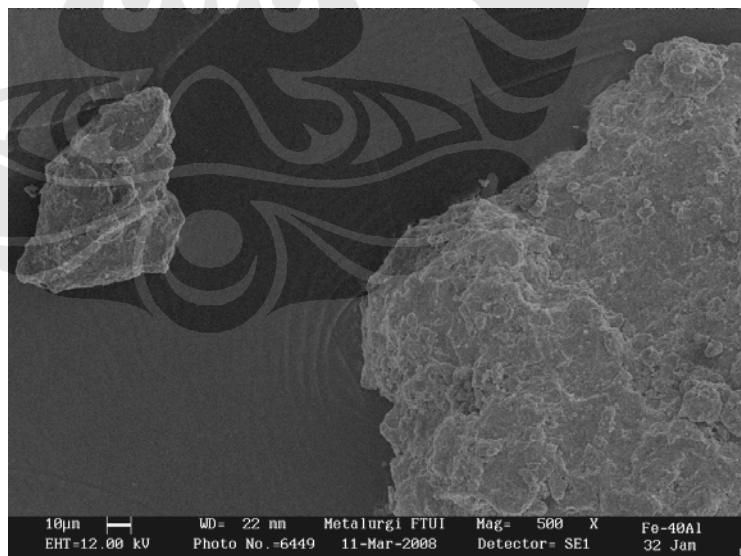
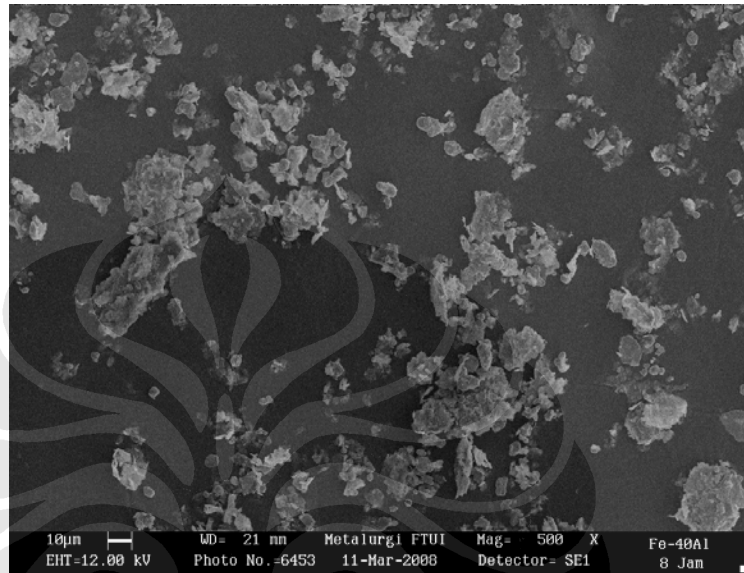
LAPISAN Fe-60%at.Al



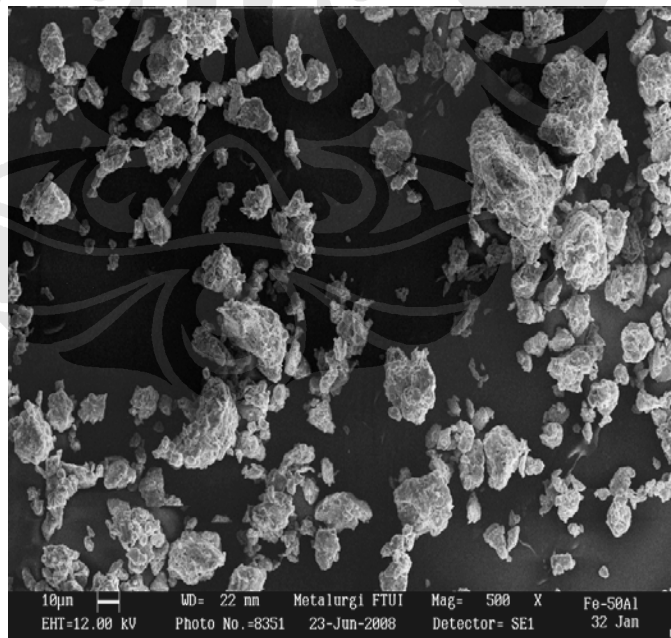
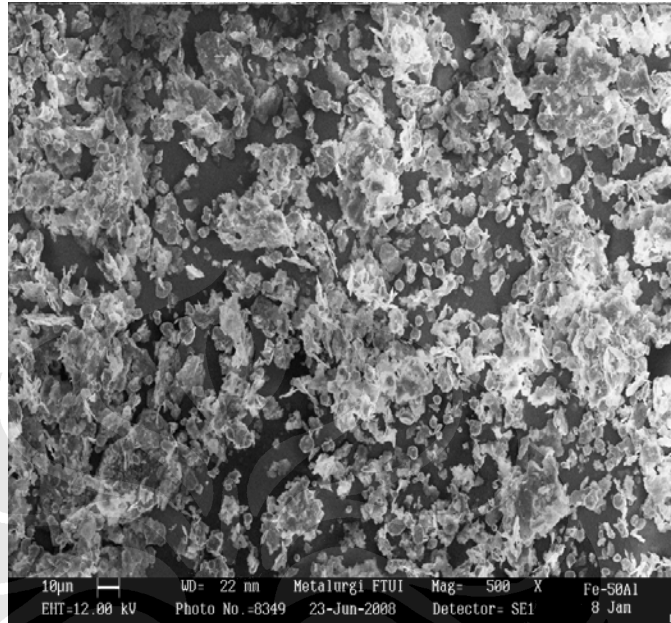
Serbuk Fe-30%atAl



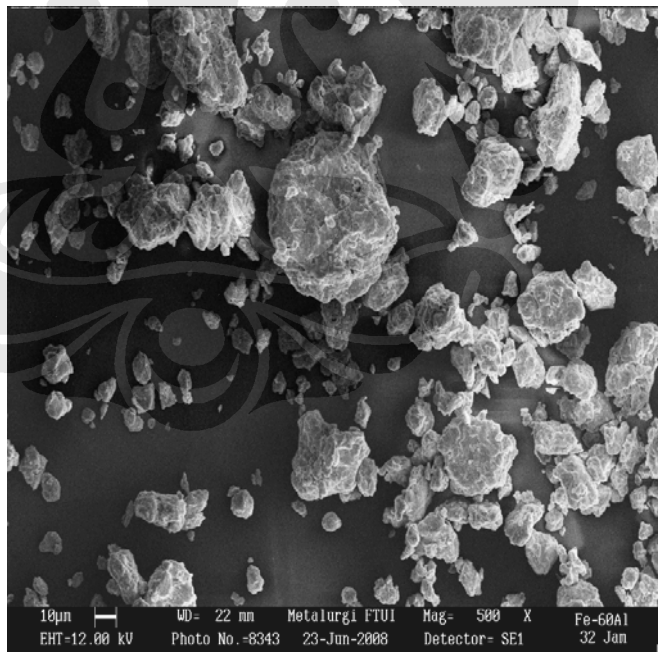
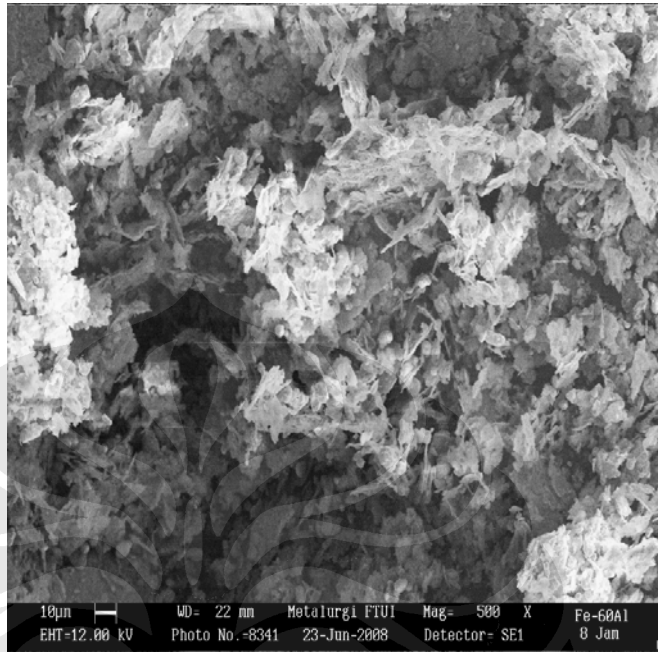
Serbuk Fe-40%atAl



Serbuk Fe-50%atAl



Serbuk Fe-60%atAl



LAMPIRAN C

Data Hasil Pengukuran Kekerasan Lapisan



Tabel Nilai kekerasan

Sampel	Peletakan	d1 (μm)	d2 (μm)	D2 (μm^2)	F (gr)	HV	HV rata2
	jejak						
Fe-50%Al	Substrat	18.5	18.2	336.7225	10	55.06018	47.20605
		23.5	22.45	527.8506	10	35.12357	
		18.3	18.3	334.89	10	55.36146	
		23.5	22.45	527.8506	10	35.12357	
		18.3	18.3	334.89	10	55.36146	
	Antar muka	19.8	20.9	414.1225	10	44.76936	53.97914
		17.3	19.1	331.24	10	55.9715	
		19.8	16.4	327.61	10	56.59168	
		17.3	19.1	331.24	10	55.9715	
		19.8	16.4	327.61	10	56.59168	
	Lapisan	19.75	18.8	371.5256	10	49.90235	55.12441
		19.75	17.65	349.69	10	53.01839	
16.8		15.8	265.69	10	69.78057		
19.75		18.8	371.5256	10	49.90235		
19.75		17.65	349.69	10	53.01839		

Fe-60%Al		17.5	16.5	289	10	64.15225	64.28906
		16	17.1	273.9025	10	67.68832	
	Substrat	17	18	306.25	10	60.53878	
		17.5	16.5	289	10	64.15225	
		15.9	17.9	285.61	10	64.91369	
	Antar muka	19.1	18.1	345.96	10	53.59001	48.40076
		20	21.9	438.9025	10	42.24173	
		21.5	20.3	436.81	10	42.44408	
		18.8	16.8	316.84	10	58.51534	
		20.6	19.9	410.0625	10	45.21262	
	Lapisan	16	17.4	278.89	10	66.47782	68.1517
		15.5	16	248.0625	10	74.73923	
16.8		17.9	301.0225	10	61.59008		
16.7		15	251.2225	10	73.79912		
17.5		16.5	289	10	64.15225		

LAMPIRAN D

Data Hasil Pengukuran Ketebalan Lapisan



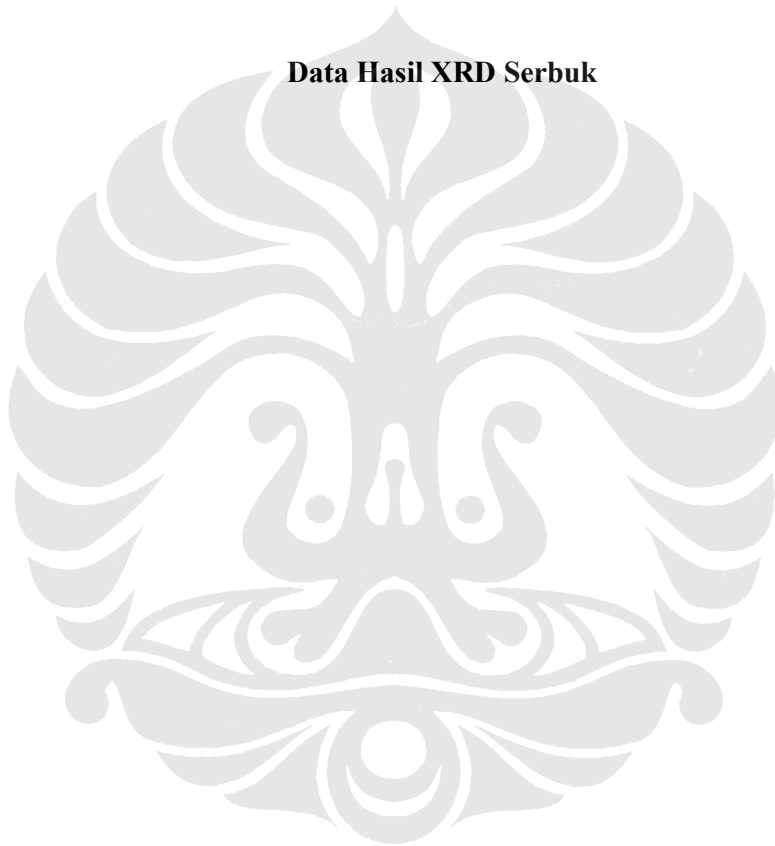
	tebal (μm)		tebal rata2 (μm)
	Fe-30at.%Al	4 jam	9.99
		9.99	
		9.99	
		9	
		8.25	
8 jam		13.32	11.608
		13.32	
		10.25	
		11.25	
		9.9	
16 jam		23.31	16.658
		19.98	
		19	
		10.5	
		10.5	
32 jam		26	26.57
		19.9	
		32.8	
	37.5		
	16.65		

	tebal (μm)		tebal rata2 (μm)
	Fe-40at.%Al	4 jam	0
0			
0			
0			
0			
8 jam		0	3.6
		0	
		0	
		9	
		9	
16 jam		15	17.025
		18	
		19.5	
		17.25	
		15.375	
32 jam		20	29.25
		22.5	
		43	
		18.75	
		42	

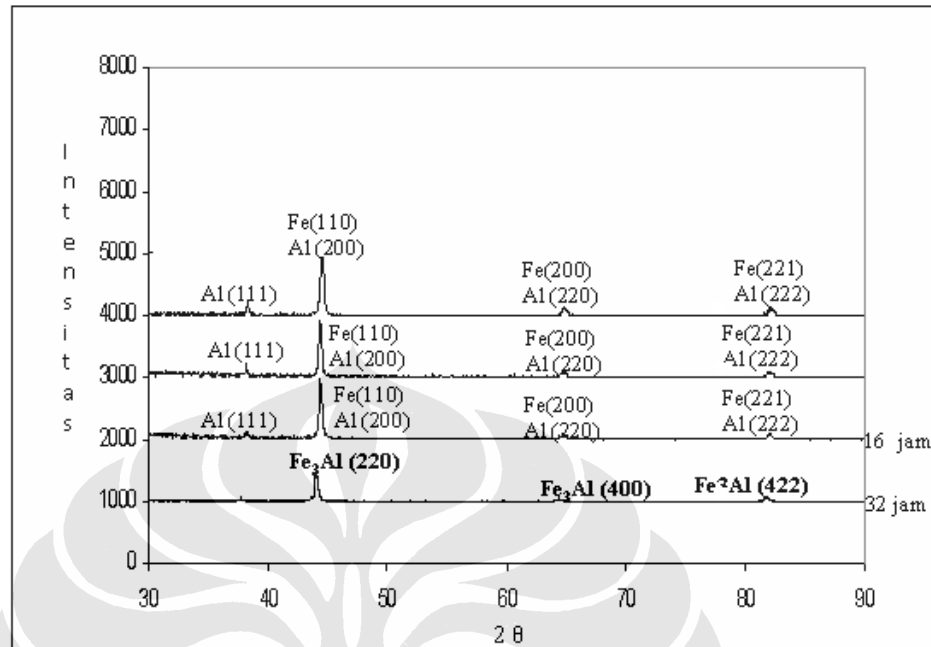
	tebal (μm)		tebal rata2 (μm)
	Fe-50at.%Al	4 jam	2.625
3.75			
1.5			
2.25			
1.875			
8 jam		6	6.3
		7.5	
		6.75	
		6	
		5.25	
16 jam		8.25	6.0375
		5.625	
		6	
		4.6875	
		5.625	
32 jam		30	27.45
	29.25		
	39		
	23.25		
		15.75	tebal rata2 (μm)
Fe-60at.%Al	4 jam	7.5	8.25
		8.25	
		9	
		9	
		7.5	
	8 jam	10.5	9
		9.75	
		9.75	
		7.5	
		7.5	
	16 jam	15	15
		15	
		15.75	
		14.25	
		15	
	32 jam	25	25.75
27			
24			
27.75			
25			

LAMPIRAN E

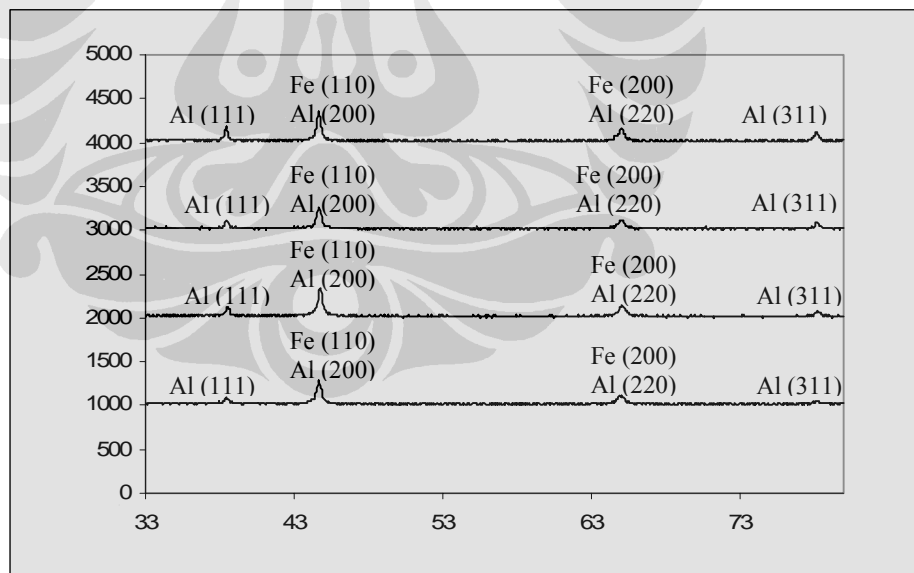
Data Hasil XRD Serbuk



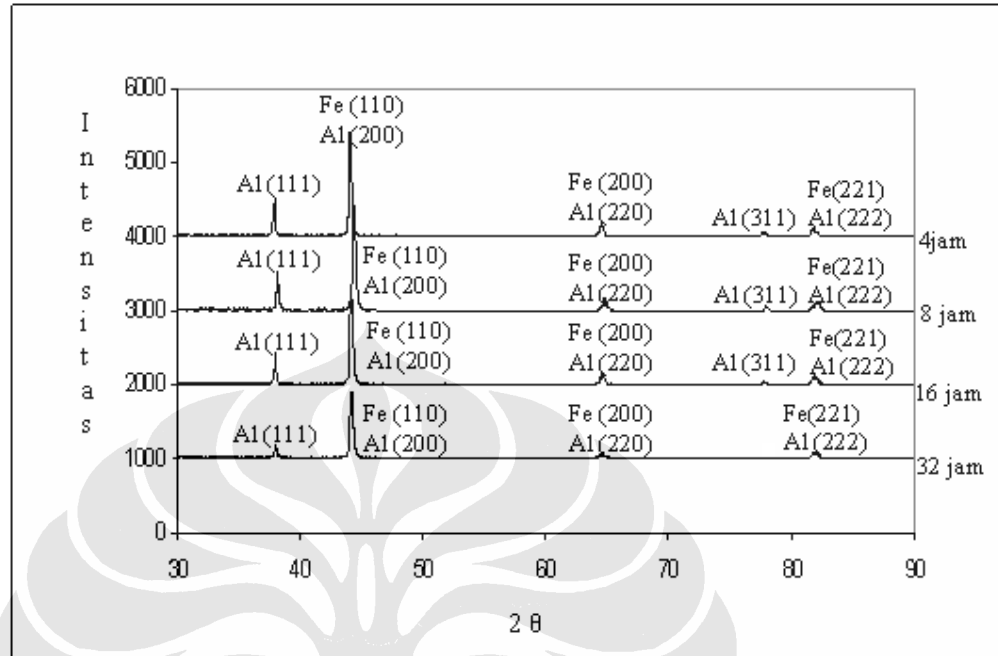
Serbuk Fe-30%atAl



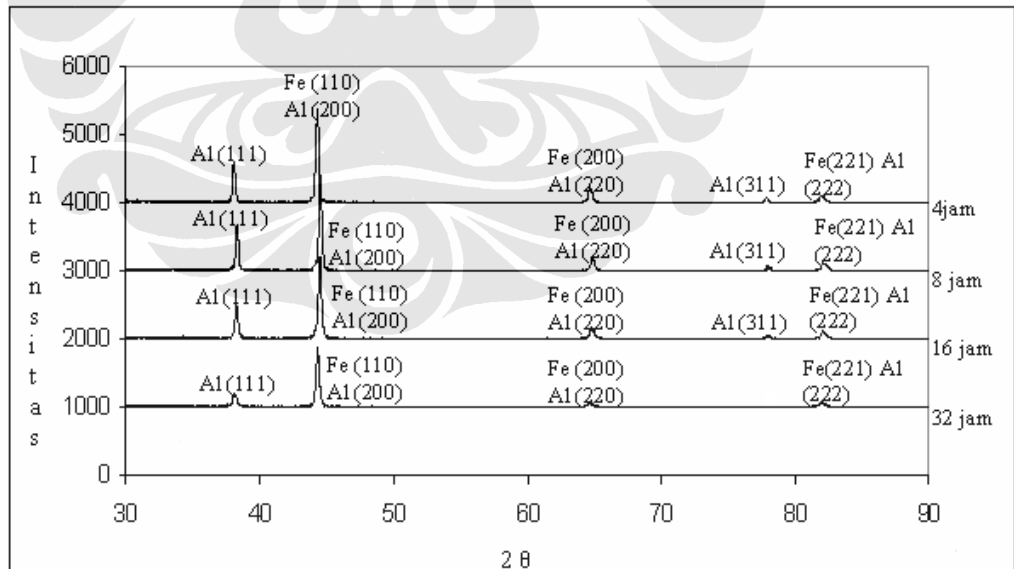
Serbuk Fe-40%atAl



Serbuk Fe-50%atAl



Serbuk Fe-60%atAl

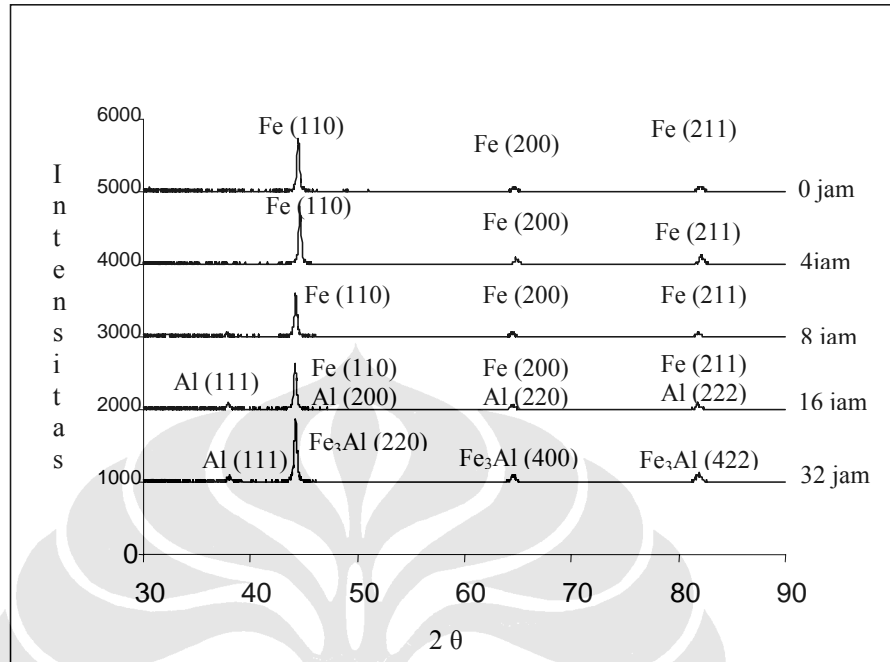


LAMPIRAN F

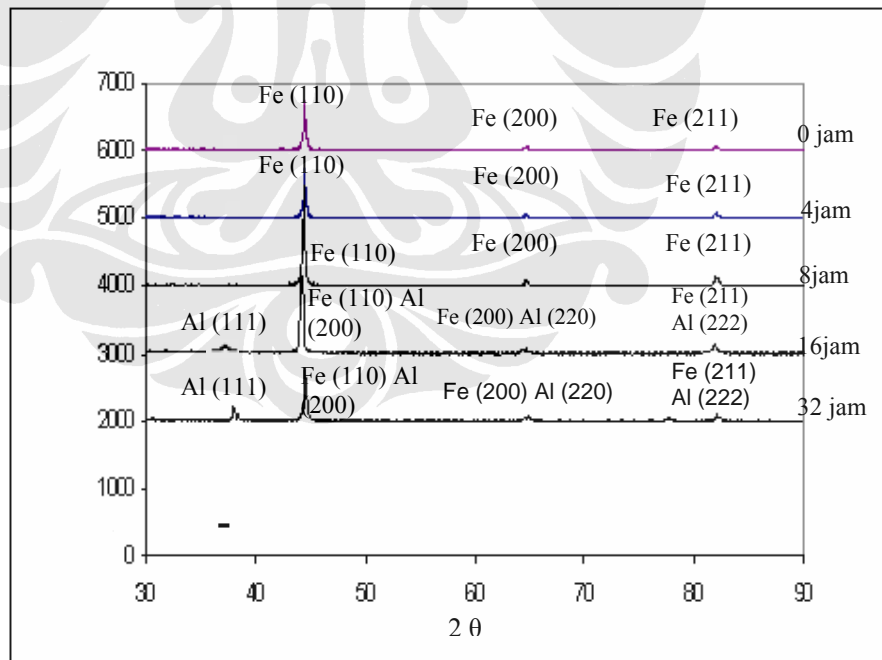
Data Hasil XRD Substrat



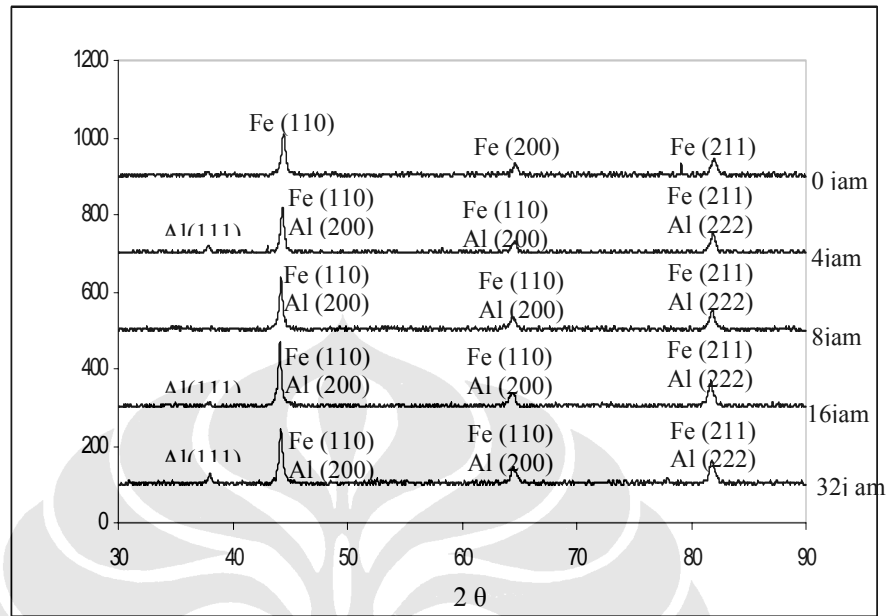
Substrat Fe-30%atAl



Substrat Fe-40%atAl



Substrat Fe-50%at.Al



Substrat Fe-60%at.Al

