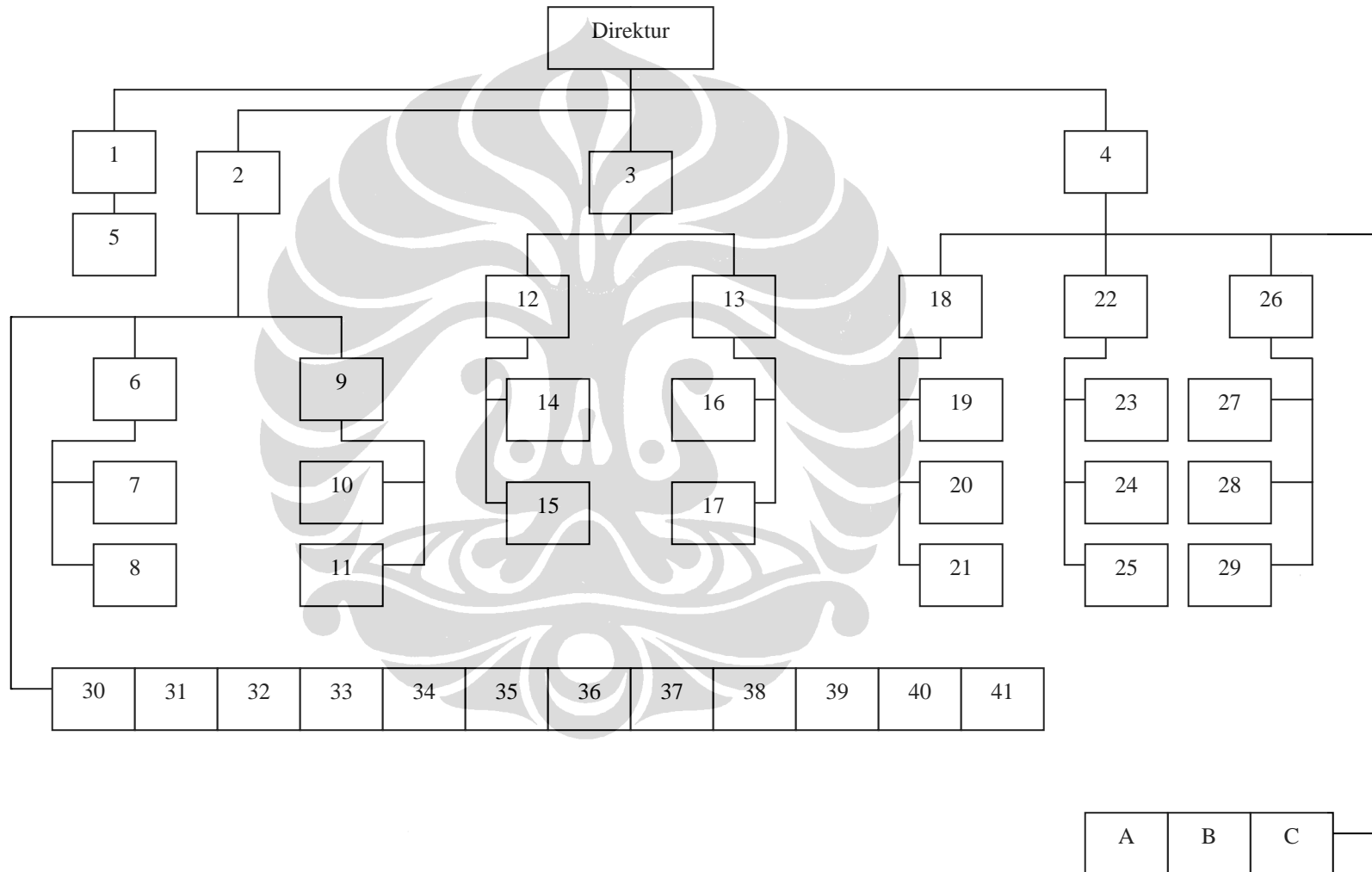


**PERDA PROPINSI LAMPUNG  
NO. 10 TAHUN 2007  
TANGGAL 12 DESEMBER 2007**

**STRUKTUR ORGANISASI  
RUMAH SAKIT UMUM DAERAH  
DR. H. ABDUL MOELOEK  
PROPINSI LAMPUNG**



**Keterangan:**

<b>No</b>	<b>Keterangan</b>	<b>No</b>	<b>Keterangan</b>
1.	Ka. Komite Medik	30.	Instalasi Rawat Jalan
2.	Wadir Pelayanan	31.	Instalasi Rawat Inap
3.	Wadir Diklat dan SDM	32.	Instalasi Darurat Medik
4.	Wadir Umum dan Keuangan	33.	Instalasi Bedah Sentral
5.	SMF	34.	Instalasi Anestesi
6.	Kabid Pelayanan	35.	Instalasi Radiologi
7.	Kasi YanMed	36.	Instalasi Farmasi
8.	Kasi Penunjang Medik	37.	Instalasi Gizi
9.	Kabid Keperawatan	38.	Instalasi Rekam Medis
10.	Kasi Mutu YanMed	39.	Instalasi Patologi Klinik
11.	Kasi Peralatan dan Tenaga Keperawatan	40.	Instalasi Patologi Anatomi
12.	Kabag Diklat	41.	Instalasi KM
13.	Kabag Perlindungan dan Pengembangan SDM	A.	Instalasi Pemeliharaan Sarana
14.	Kasubag Diklat Medis dan Non Medis	B.	Instalasi Sanitasi
15.	Kasubag Diklat Kepegawaian	C.	Instalasi Laundry
16.	Kasubag Hukum dan Perlindungan SDM		
17.	Kasubag Pengembangan SDM		
18.	Sekretaris RSAM		
19.	Kasubag Umum		
20.	Kasubag Rumah Tangga dan Perlengkapan		
21.	Kasubag Kepegawaian		
22.	Kabag Perencanaan dan Rekam Medis		
23.	Kasubag PPL		
24.	Kasubag Rekam Medis		
25.	Kasubag Humas		
26.	Kabag Keuangan		
27.	Kasubag Penyusunan Anggaran		
28.	Kasubag Mobilitas Dana		
29.	Kasubag Akuntansi Verifikasi		

## Frequencies

[DataSet1] C:\Documents and Settings\User\My Documents\materi2 kuliah\bahan kuliah\bachelor\term 4, bachelor\skripsi\HNP\andat\andat.sav

### Statistics

sex		
N	Valid	60
	Missing	0

sex					
		Frequency	Percent	Valid Percent	Cumulative Percent
Valid	laki2	28	46,7	46,7	46,7
	perempuan	32	53,3	53,3	100,0
Total		60	100,0	100,0	

## Frequencies

[DataSet1] C:\Documents and Settings\User\My Documents\materi2 kuliah\bahan kuliah\bachelor\term 4, bachelor\skripsi\HNP\andat\andat.sav

### Statistics

rokok		
N	Valid	60
	Missing	0

rokok					
		Frequency	Percent	Valid Percent	Cumulative Percent
Valid	ya	13	21,7	21,7	21,7
	tdk	47	78,3	78,3	100,0
Total		60	100,0	100,0	

## Frequencies

[DataSet1] C:\Documents and Settings\User\My Documents\materi2 kuliah\bahan kuliah\bachelor\term 4, bachelor\skripsi\HNP\andat\andat.sav

### Statistics

lbp

N	Valid	60
	Missing	0

lbp

		Frequency	Percent	Valid Percent	Cumulative Percent
Valid	ya	30	50,0	50,0	50,0
	tdk	30	50,0	50,0	100,0
	Total	60	100,0	100,0	

### Frequencies

[DataSet1] C:\Documents and Settings\User\My Documents\materi2 kuliah\bahan kuliah\bachelor\term 4, bachelor\skripsi\HNP\andat\dll.sav

### Statistics

lingk\_kerja

N	Valid	60
	Missing	0

lingk\_kerja

		Frequency	Percent	Valid Percent	Cumulative Percent
Valid	1,00	34	56,7	56,7	56,7
	2,00	26	43,3	43,3	100,0
	Total	60	100,0	100,0	

### Frequencies

[DataSet1] C:\Documents and Settings\User\My Documents\materi2 kuliah\bahan kuliah\bachelor\term 4, bachelor\skripsi\HNP\andat\Cop of dll.sav

## Frequencies

[DataSet1] C:\Documents and Settings\User\My Documents\materi2 kuliah\bahan kuliah\bachelor\term 4, bachelor\skripsi\HNP\andat\dll.sav

### Statistics

suhu

N	Valid	60
	Missing	0

### suhu

		Frequency	Percent	Valid Percent	Cumulative Percent
Valid	tdk nyaman	10	16,7	16,7	16,7
	nyaman	50	83,3	83,3	100,0
	Total	60	100,0	100,0	

## Frequencies

[DataSet1] C:\Documents and Settings\User\My Documents\materi2 kuliah\bahan kuliah\bachelor\term 4, bachelor\skripsi\HNP\andat\dll.sav

### Statistics

cahaya

N	Valid	60
	Missing	0

**cahaya**

	Frequency	Percent	Valid Percent	Cumulative Percent
Valid tdk baik	4	6,7	6,7	6,7
baik	56	93,3	93,3	100,0
Total	60	100,0	100,0	

**Frequencies**

[DataSet1] C:\Documents and Settings\User\My Documents\materi2 kuliah\bahan kuliah\bachelor\term 4, bachelor\skripsi\HNP\andat\dll.sav

**Statistics**

getaran

N	Valid	60
	Missing	0

**getaran**

	Frequency	Percent	Valid Percent	Cumulative Percent
Valid ya	3	5,0	5,0	5,0
tdk	57	95,0	95,0	100,0
Total	60	100,0	100,0	

**Crosstabs**

[DataSet1] C:\Documents and Settings\User\My Documents\materi2 kuliah\bahan kuliah\bachelor\term 4, bachelor\skripsi\HNP\andat\dll.sav

**Case Processing Summary**

	Cases					
	Valid		Missing		Total	
	N	Percent	N	Percent	N	Percent
suhu * risk_HNP	60	100,0%	0	,0%	60	100,0%

**suhu \* risk\_HNP Crosstabulation**

			risk_HNP		Total
			>1	2,00	
suhu	tdk nyaman	Count	4	6	10
		% within suhu	40,0%	60,0%	100,0%
	nyaman	Count	31	19	50
		% within suhu	62,0%	38,0%	100,0%
Total		Count	35	25	60
		% within suhu	58,3%	41,7%	100,0%

**Chi-Square Tests**

	Value	df	Asymp. Sig. (2-sided)	Exact Sig. (2-sided)	Exact Sig. (1-sided)
Pearson Chi-Square	1,659 <sup>b</sup>	1	,198	,294	,174
Continuity Correction <sup>a</sup>	,878	1	,349		
Likelihood Ratio	1,637	1	,201		
Fisher's Exact Test					
Linear-by-Linear Association	1,632	1	,201		
N of Valid Cases	60				

a. Computed only for a 2x2 table

b. 1 cells (25,0%) have expected count less than 5. The minimum expected count is 4,17.

**Risk Estimate**

	Value	95% Confidence Interval	
		Lower	Upper
Odds Ratio for suhu (tdk nyaman / nyaman)	,409	,102	1,637
For cohort risk_HNP = >1	,645	,293	1,421
For cohort risk_HNP = 2,00	1,579	,851	2,928
N of Valid Cases	60		

## Crosstabs

[DataSet1] C:\Documents and Settings\User\My Documents\materi2 kuliah\bahan kuliah\bachelor\term 4, bachelor\skripsi\HNP\andat\dll.sav

### Case Processing Summary

	Cases					
	Valid		Missing		Total	
	N	Percent	N	Percent	N	Percent
cahaya * risk_HNP	60	100,0%	0	,0%	60	100,0%

### cahaya \* risk\_HNP Crosstabulation

			risk_HNP		Total
			>1	2,00	
cahaya	tdk baik	Count	4	0	4
		% within cahaya	100,0%	,0%	100,0%
	baik	Count	31	25	56
		% within cahaya	55,4%	44,6%	100,0%
Total		Count	35	25	60
		% within cahaya	58,3%	41,7%	100,0%

### Chi-Square Tests

	Value	df	Asymp. Sig. (2-sided)	Exact Sig. (2-sided)	Exact Sig. (1-sided)
Pearson Chi-Square	3,061 <sup>b</sup>	1	,080		
Continuity Correction <sup>a</sup>	1,500	1	,221		
Likelihood Ratio	4,515	1	,034		
Fisher's Exact Test				,133	,107
Linear-by-Linear Association	3,010	1	,083		
N of Valid Cases	60				

a. Computed only for a 2x2 table

b. 2 cells (50,0%) have expected count less than 5. The minimum expected count is 1,67.



### Risk Estimate

	Value	95% Confidence Interval	
		Lower	Upper
For cohort risk_HNP = >1	1,806	1,428	2,285
N of Valid Cases	60		

### Crosstabs

[DataSet1] C:\Documents and Settings\User\My Documents\materi2 kuliah\bahan kuliah\bachelor\term 4, bachelor\skripsi\HNP\andata\dll.sav

### Case Processing Summary

	Cases					
	Valid		Missing		Total	
	N	Percent	N	Percent	N	Percent
bising * risk_HNP	60	100,0%	0	,0%	60	100,0%

### bising \* risk\_HNP Crosstabulation

			risk_HNP		Total
			>1	2,00	
bising	ya	Count	14	8	22
		% within bising	63,6%	36,4%	100,0%
tdk		Count	21	17	38
		% within bising	55,3%	44,7%	100,0%
Total		Count	35	25	60
		% within bising	58,3%	41,7%	100,0%

### Chi-Square Tests

	Value	df	Asymp. Sig. (2-sided)	Exact Sig. (2-sided)	Exact Sig. (1-sided)
Pearson Chi-Square	,402 <sup>b</sup>	1	,526		
Continuity Correction <sup>a</sup>	,131	1	,717		
Likelihood Ratio	,405	1	,525		
Fisher's Exact Test				,594	,360
Linear-by-Linear Association	,395	1	,530		
N of Valid Cases	60				

a. Computed only for a 2x2 table

b. 0 cells (,0%) have expected count less than 5. The minimum expected count is 9,17.

### Risk Estimate

	Value	95% Confidence Interval	
		Lower	Upper
Odds Ratio for bising (ya / tdk)	1,417	,482	4,166
For cohort risk_HNP = >1	1,152	,752	1,763
For cohort risk_HNP = 2,00	,813	,422	1,567
N of Valid Cases	60		

### Crosstabs

[DataSet1] C:\Documents and Settings\User\My Documents\materi2 kuliah\bahan kuliah\bachelor\term 4, bachelor\skripsi\HNP\andata\dll.sav

### Case Processing Summary

	Cases					
	Valid		Missing		Total	
	N	Percent	N	Percent	N	Percent
kimia * risk_HNP	60	100,0%	0	,0%	60	100,0%

**kimia \* risk\_HNP Crosstabulation**

			risk_HNP		Total
			>1	2,00	
kimia	ya	Count	10	11	21
		% within kimia	47,6%	52,4%	100,0%
	tdk	Count	25	14	39
		% within kimia	64,1%	35,9%	100,0%
Total		Count	35	25	60
		% within kimia	58,3%	41,7%	100,0%

**Chi-Square Tests**

	Value	df	Asymp. Sig. (2-sided)	Exact Sig. (2-sided)	Exact Sig. (1-sided)
Pearson Chi-Square	1,526 <sup>b</sup>	1	,217	,276	,168
Continuity Correction <sup>a</sup>	,923	1	,337		
Likelihood Ratio	1,518	1	,218		
Fisher's Exact Test					
Linear-by-Linear Association	1,500	1	,221		
N of Valid Cases	60				

a. Computed only for a 2x2 table

b. 0 cells (,0%) have expected count less than 5. The minimum expected count is 8,75.

**Risk Estimate**

	Value	95% Confidence Interval	
		Lower	Upper
Odds Ratio for kimia (ya / tdk)	,509	,173	1,496
For cohort risk_HNP = >1	,743	,448	1,233
For cohort risk_HNP = 2,00	1,459	,813	2,619
N of Valid Cases	60		

### Statistics

umur1		
N	Valid	60
	Missing	0
Mean		1,4833
Median		1,4833 <sup>a</sup>
Mode		1,00
Std. Deviation		,50394
Skewness		,068
Std. Error of Skewness		,309
Minimum		1,00
Maximum		2,00

a. Calculated from grouped data.

umur1					
		Frequency	Percent	Valid Percent	Cumulative Percent
Valid	1,00	31	51,7	51,7	51,7
	2,00	29	48,3	48,3	100,0
Total		60	100,0	100,0	

### Crosstabs

[DataSet1] C:\Documents and Settings\User\My Documents\materi2 kuliah\bahan kuliah\ bachelor\term 4, bachelor\skripsi\HNP\andat\COPY of dll.sav

### Case Processing Summary

	Cases					
	Valid		Missing		Total	
	N	Percent	N	Percent	N	Percent
umur1 * risk_HNP	60	100,0%	0	,0%	60	100,0%

**umur1 \* risk\_HNP Crosstabulation**

			risk_HNP		Total
			>1	2,00	
umur1	1,00	Count	17	14	31
		% within umur1	54,8%	45,2%	100,0%
	2,00	Count	18	11	29
		% within umur1	62,1%	37,9%	100,0%
Total		Count	35	25	60
		% within umur1	58,3%	41,7%	100,0%

**Chi-Square Tests**

	Value	df	Asymp. Sig. (2-sided)	Exact Sig. (2-sided)	Exact Sig. (1-sided)
Pearson Chi-Square	,322 <sup>b</sup>	1	,570	,609	,380
Continuity Correction <sup>a</sup>	,093	1	,760		
Likelihood Ratio	,323	1	,570		
Fisher's Exact Test					
Linear-by-Linear Association	,317	1	,573		
N of Valid Cases	60				

a. Computed only for a 2x2 table

b. 0 cells (,0%) have expected count less than 5. The minimum expected count is 12,08.

**Risk Estimate**

	Value	95% Confidence Interval	
		Lower	Upper
Odds Ratio for umur1 (1,00 / 2,00)	,742	,265	2,081
For cohort risk_HNP = >1	,884	,576	1,355
For cohort risk_HNP = 2,00	1,191	,650	2,182
N of Valid Cases	60		

## Crosstabs

[DataSet1] C:\Documents and Settings\User\My Documents\materi2 kuliah\bahan kuliah\bachelor\term 4, bachelor\skripsi\HNP\andata\dll.sav

### Case Processing Summary

	Cases					
	Valid		Missing		Total	
	N	Percent	N	Percent	N	Percent
sex * risk_HNP	60	100,0%	0	,0%	60	100,0%

### sex \* risk\_HNP Crosstabulation

			risk_HNP		Total
			>1	2,00	
sex	laki2	Count	17	11	28
		% within sex	60,7%	39,3%	100,0%
	perempuan	Count	18	14	32
		% within sex	56,3%	43,8%	100,0%
Total		Count	35	25	60
		% within sex	58,3%	41,7%	100,0%

### Chi-Square Tests

	Value	df	Asymp. Sig. (2-sided)	Exact Sig. (2-sided)	Exact Sig. (1-sided)
Pearson Chi-Square	,122 <sup>b</sup>	1	,726		
Continuity Correction <sup>a</sup>	,008	1	,930		
Likelihood Ratio	,123	1	,726		
Fisher's Exact Test				,796	,466
Linear-by-Linear Association	,120	1	,729		
N of Valid Cases	60				

a. Computed only for a 2x2 table

b. 0 cells (,0%) have expected count less than 5. The minimum expected count is 11,67.

### Risk Estimate

	Value	95% Confidence Interval	
		Lower	Upper
Odds Ratio for sex (laki2 / perempuan)	1,202	,429	3,370
For cohort risk_HNP = >1	1,079	,704	1,654
For cohort risk_HNP = 2,00	,898	,490	1,645
N of Valid Cases	60		

### Crosstabs

[DataSet1] C:\Documents and Settings\User\My Documents\materi2 kuliah\bahan kuliah\ bachelor\term 4, bachelor\skripsi\HNP\andat\dl1.sav

### Case Processing Summary

	Cases					
	Valid		Missing		Total	
	N	Percent	N	Percent	N	Percent
rokok * risk_HNP	60	100,0%	0	,0%	60	100,0%

### rokok \* risk\_HNP Crosstabulation

			risk_HNP		Total
			>1	2,00	
rokok	ya	Count	7	6	13
		% within rokok	53,8%	46,2%	100,0%
tdk	Count	28	19	47	
	% within rokok	59,6%	40,4%	100,0%	
Total	Count	35	25	60	
	% within rokok	58,3%	41,7%	100,0%	

### Chi-Square Tests

	Value	df	Asymp. Sig. (2-sided)	Exact Sig. (2-sided)	Exact Sig. (1-sided)
Pearson Chi-Square	,137 <sup>b</sup>	1	,711		
Continuity Correction <sup>a</sup>	,003	1	,958		
Likelihood Ratio	,137	1	,712		
Fisher's Exact Test				,758	,475
Linear-by-Linear Association	,135	1	,713		
N of Valid Cases	60				

a. Computed only for a 2x2 table

b. 0 cells (,0%) have expected count less than 5. The minimum expected count is 5,42.

### Risk Estimate

	Value	95% Confidence Interval	
		Lower	Upper
Odds Ratio for rokok (ya / tdk)	,792	,230	2,726
For cohort risk_HNP = >1	,904	,519	1,575
For cohort risk_HNP = 2,00	1,142	,577	2,258
N of Valid Cases	60		

### Crosstabs

[DataSet1] C:\Documents and Settings\User\My Documents\materi2 kuliah\bahan kuliah\ bachelor\term 4, bachelor\skripsi\HNP\andat\dll.sav

### Case Processing Summary

	Cases					
	Valid		Missing		Total	
	N	Percent	N	Percent	N	Percent
riwayat_sblmnya * risk_HNP	60	100,0%	0	,0%	60	100,0%



**riwayat\_sblmnya \* risk\_HNP Crosstabulation**

			risk_HNP		Total
			>1	2,00	
riwayat_sblmnya	1-3	Count	10	2	12
		% within riwayat_sblmnya	83,3%	16,7%	100,0%
	4	Count	25	23	48
		% within riwayat_sblmnya	52,1%	47,9%	100,0%
Total		Count	35	25	60
		% within riwayat_sblmnya	58,3%	41,7%	100,0%

**Chi-Square Tests**

	Value	df	Asymp. Sig. (2-sided)	Exact Sig. (2-sided)	Exact Sig. (1-sided)
Pearson Chi-Square	3,857 <sup>b</sup>	1	,050	,058	,047
Continuity Correction <sup>a</sup>	2,679	1	,102		
Likelihood Ratio	4,231	1	,040		
Fisher's Exact Test					
Linear-by-Linear Association	3,793	1	,051		
N of Valid Cases	60				

a. Computed only for a 2x2 table

b. 0 cells (,0%) have expected count less than 5. The minimum expected count is 5,00.

**Risk Estimate**

	Value	95% Confidence Interval	
		Lower	Upper
Odds Ratio for riwayat_sblmnya (1-3 / 4)	4,600	,910	23,252
For cohort risk_HNP = >1	1,600	1,104	2,319
For cohort risk_HNP = 2,00	,348	,095	1,275
N of Valid Cases	60		

## Crosstabs

[DataSet1] C:\Documents and Settings\User\My Documents\materi2 kuliah\bahan kuliah\bachelor\term 4, bachelor\skripsi\HNP\andat\dll.sav

### Case Processing Summary

	Cases					
	Valid		Missing		Total	
	N	Percent	N	Percent	N	Percent
postur_kerja * risk_HN	60	100,0%	0	,0%	60	100,0%

### postur\_kerja \* risk\_HNP Crosstabulation

			risk_HNP		Total
			>1	2,00	
postur_kerja	1,00	Count	28	19	47
		% within postur_kerja	59,6%	40,4%	100,0%
	2,00	Count	7	6	13
		% within postur_kerja	53,8%	46,2%	100,0%
Total		Count	35	25	60
		% within postur_kerja	58,3%	41,7%	100,0%

### Chi-Square Tests

	Value	df	Asymp. Sig. (2-sided)	Exact Sig. (2-sided)	Exact Sig. (1-sided)
Pearson Chi-Square	,137 <sup>b</sup>	1	,711		
Continuity Correction <sup>a</sup>	,003	1	,958		
Likelihood Ratio	,137	1	,712		
Fisher's Exact Test				,758	,475
Linear-by-Linear Association	,135	1	,713		
N of Valid Cases	60				

a. Computed only for a 2x2 table

b. 0 cells (.0%) have expected count less than 5. The minimum expected count is 5,42.

### Risk Estimate

	Value	95% Confidence Interval	
		Lower	Upper
Odds Ratio for postur_kerja (1,00 / 2,00)	1,263	,367	4,349
For cohort risk_HNP = >1	1,106	,635	1,929
For cohort risk_HNP = 2,00	,876	,443	1,732
N of Valid Cases	60		

### Crosstabs

[DataSet1] C:\Documents and Settings\User\My Documents\materi2 kuliah\bahan kuliah\bachelor\term 4, bachelor\skripsi\HNP\andata\dl1.sav

### Case Processing Summary

	Cases					
	Valid		Missing		Total	
	N	Percent	N	Percent	N	Percent
shift * risk_HNP	60	100,0%	0	,0%	60	100,0%

### shift \* risk\_HNP Crosstabulation

			risk_HNP		Total
			>1	2,00	
shift	shift	Count	27	18	45
		% within shift	60,0%	40,0%	100,0%
tdk	tdk	Count	8	7	15
		% within shift	53,3%	46,7%	100,0%
Total		Count	35	25	60
		% within shift	58,3%	41,7%	100,0%

### Chi-Square Tests

	Value	df	Asymp. Sig. (2-sided)	Exact Sig. (2-sided)	Exact Sig. (1-sided)
Pearson Chi-Square	,206 <sup>b</sup>	1	,650		
Continuity Correction <sup>a</sup>	,023	1	,880		
Likelihood Ratio	,204	1	,651		
Fisher's Exact Test				,765	,437
Linear-by-Linear Association	,202	1	,653		
N of Valid Cases	60				

a. Computed only for a 2x2 table

b. 0 cells (,0%) have expected count less than 5. The minimum expected count is 6,25.

### Risk Estimate

	Value	95% Confidence Interval	
		Lower	Upper
Odds Ratio for shift (shift / tdk)	1,313	,405	4,257
For cohort risk_HNP = >1	1,125	,662	1,911
For cohort risk_HNP = 2,00	,857	,448	1,640
N of Valid Cases	60		

### Crosstabs

[DataSet1] C:\Documents and Settings\User\My Documents\materi2 kuliah\bahan kuliah\bachelor\term 4, bachelor\skripsi\HNP\andat\ddl.sav

### Case Processing Summary

	Cases					
	Valid		Missing		Total	
	N	Percent	N	Percent	N	Percent
jamkerja * risk_HNP	60	100,0%	0	,0%	60	100,0%

**jamkerja \* risk\_HNP Crosstabulation**

			risk_HNP		Total
			>1	2,00	
jamkerja	> 8 jam	Count	11	12	23
		% within jamkerja	47,8%	52,2%	100,0%
	8 jam	Count	24	13	37
		% within jamkerja	64,9%	35,1%	100,0%
Total		Count	35	25	60
		% within jamkerja	58,3%	41,7%	100,0%

**Chi-Square Tests**

	Value	df	Asymp. Sig. (2-sided)	Exact Sig. (2-sided)	Exact Sig. (1-sided)
Pearson Chi-Square	1,694 <sup>b</sup>	1	,193	,282	,151
Continuity Correction <sup>a</sup>	1,066	1	,302		
Likelihood Ratio	1,689	1	,194		
Fisher's Exact Test					
Linear-by-Linear Association	1,666	1	,197		
N of Valid Cases	60				

a. Computed only for a 2x2 table

b. 0 cells (,0%) have expected count less than 5. The minimum expected count is 9,58.

**Risk Estimate**

	Value	95% Confidence Interval	
		Lower	Upper
Odds Ratio for jamkerja (> 8 jam / 8 jam)	,497	,172	1,434
For cohort risk_HNP = >1	,737	,452	1,201
For cohort risk_HNP = 2,00	1,485	,825	2,671
N of Valid Cases	60		

## Crosstabs

[DataSet1] C:\Documents and Settings\User\My Documents\materi2 kuliah\bahan kuliah\bachelor\term 4, bachelor\skripsi\HNP\andats\andats.dll.sav

### Case Processing Summary

	Cases					
	Valid		Missing		Total	
	N	Percent	N	Percent	N	Percent
lama_kerja2 * risk_HNP	60	100,0%	0	,0%	60	100,0%

### lama\_kerja2 \* risk\_HNP Crosstabulation

		risk_HNP		Total	
		>1	2,00		
lama_kerja2	1	Count	11	7	18
		% within lama_kerja2	61,1%	38,9%	100,0%
2	Count	24	18	42	
	% within lama_kerja2	57,1%	42,9%	100,0%	
Total	Count	35	25	60	
	% within lama_kerja2	58,3%	41,7%	100,0%	

### Chi-Square Tests

	Value	df	Asymp. Sig. (2-sided)	Exact Sig. (2-sided)	Exact Sig. (1-sided)
Pearson Chi-Square	,082 <sup>b</sup>	1	,775		
Continuity Correction <sup>a</sup>	,000	1	1,000		
Likelihood Ratio	,082	1	,775		
Fisher's Exact Test				1,000	,503
Linear-by-Linear Association	,080	1	,777		
N of Valid Cases	60				

a. Computed only for a 2x2 table

b. 0 cells (,0%) have expected count less than 5. The minimum expected count is 7,50.

### Risk Estimate

	Value	95% Confidence Interval	
		Lower	Upper
Odds Ratio for lama_kerja2 (1 / 2)	1,179	,382	3,640
For cohort risk_HNP = >1	1,069	,680	1,681
For cohort risk_HNP = 2,00	,907	,461	1,784
N of Valid Cases	60		

### Crosstabs

[DataSet1] C:\Documents and Settings\User\My Documents\materi2 kuliah\bahan kuliah\bachelor\term 4, bachelor\skripsi\HNP\andat\dll.sav

### Case Processing Summary

	Cases					
	Valid		Missing		Total	
	N	Percent	N	Percent	N	Percent
bebanberat * risk_HNP	60	100,0%	0	,0%	60	100,0%

### bebanberat \* risk\_HNP Crosstabulation

		risk_HNP		Total	
		>1	2,00		
bebanberat	ya	Count	20	5	25
		% within bebanberat	80,0%	20,0%	100,0%
tdk		Count	15	20	35
		% within bebanberat	42,9%	57,1%	100,0%
Total		Count	35	25	60
		% within bebanberat	58,3%	41,7%	100,0%

### Chi-Square Tests

	Value	df	Asymp. Sig. (2-sided)	Exact Sig. (2-sided)	Exact Sig. (1-sided)
Pearson Chi-Square	8,278 <sup>b</sup>	1	,004		
Continuity Correction <sup>a</sup>	6,820	1	,009		
Likelihood Ratio	8,680	1	,003		
Fisher's Exact Test				,007	,004
Linear-by-Linear Association	8,140	1	,004		
N of Valid Cases	60				

a. Computed only for a 2x2 table

b. 0 cells (,0%) have expected count less than 5. The minimum expected count is 10,42.

### Risk Estimate

	Value	95% Confidence Interval	
		Lower	Upper
Odds Ratio for bebanberat (ya / tdk)	5,333	1,628	17,475
For cohort risk_HNP = >1	1,867	1,214	2,869
For cohort risk_HNP = 2,00	,350	,152	,807
N of Valid Cases	60		

### Crosstabs

[DataSet1] C:\Documents and Settings\User\My Documents\materi2 kuliah\bahan kuliah\ bachelor\term 4, bachelor\skripsi\HNP\andat\ dll.sav

### Case Processing Summary

	Cases					
	Valid		Missing		Total	
	N	Percent	N	Percent	N	Percent
jamkerja * risk_HNP	60	100,0%	0	,0%	60	100,0%



**jamkerja \* risk\_HNP Crosstabulation**

			risk_HNP		Total
			>1	2,00	
jamkerja	> 8 jam	Count	11	12	23
		% within jamkerja	47,8%	52,2%	100,0%
	8 jam	Count	24	13	37
		% within jamkerja	64,9%	35,1%	100,0%
Total		Count	35	25	60
		% within jamkerja	58,3%	41,7%	100,0%

**Chi-Square Tests**

	Value	df	Asymp. Sig. (2-sided)	Exact Sig. (2-sided)	Exact Sig. (1-sided)
Pearson Chi-Square	1,694 <sup>b</sup>	1	,193	,282	,151
Continuity Correction <sup>a</sup>	1,066	1	,302		
Likelihood Ratio	1,689	1	,194		
Fisher's Exact Test					
Linear-by-Linear Association	1,666	1	,197		
N of Valid Cases	60				

a. Computed only for a 2x2 table

b. 0 cells (,0%) have expected count less than 5. The minimum expected count is 9,58.

**Risk Estimate**

	Value	95% Confidence Interval	
		Lower	Upper
Odds Ratio for jamkerja (> 8 jam / 8 jam)	,497	,172	1,434
For cohort risk_HNP = >1	,737	,452	1,201
For cohort risk_HNP = 2,00	1,485	,825	2,671
N of Valid Cases	60		