

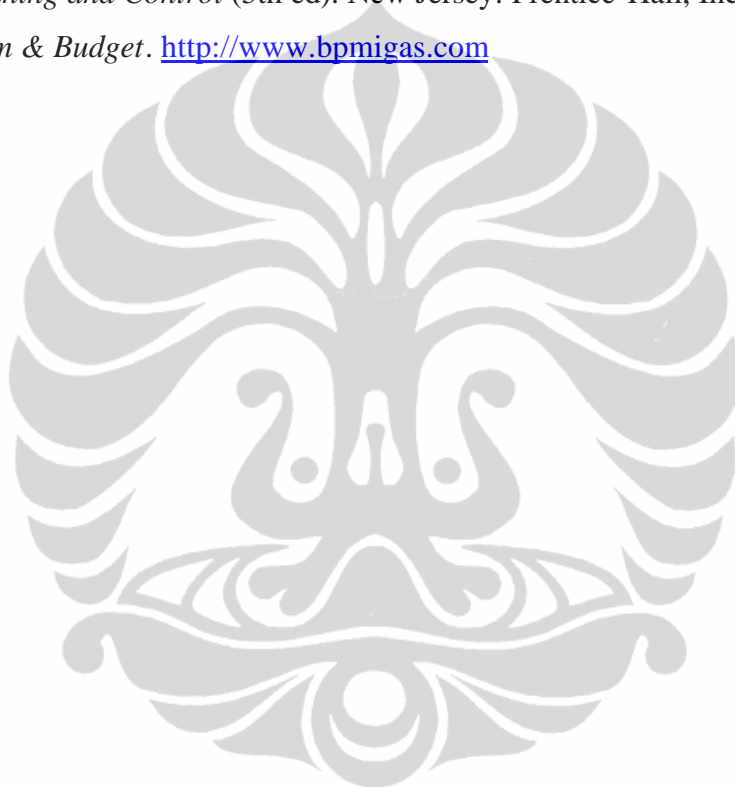
Struktur Organisasi. <http://www.bpmigas.com>

Universitas Indonesia (2008). *Pedoman Teknis Penulisan Tugas Akhir Mahasiswa Universitas Indonesia.*

Fakultas Ekonomi Universitas Indonesia (2002). *Pedoman Pembuatan Karya Akhir.*

Welsch, Glenn A., Hilton, Ronald W., & Gordon, Paul N. (1998). *Budgeting: Profit Planning and Control* (5th ed). New Jersey: Prentice-Hall, Inc.

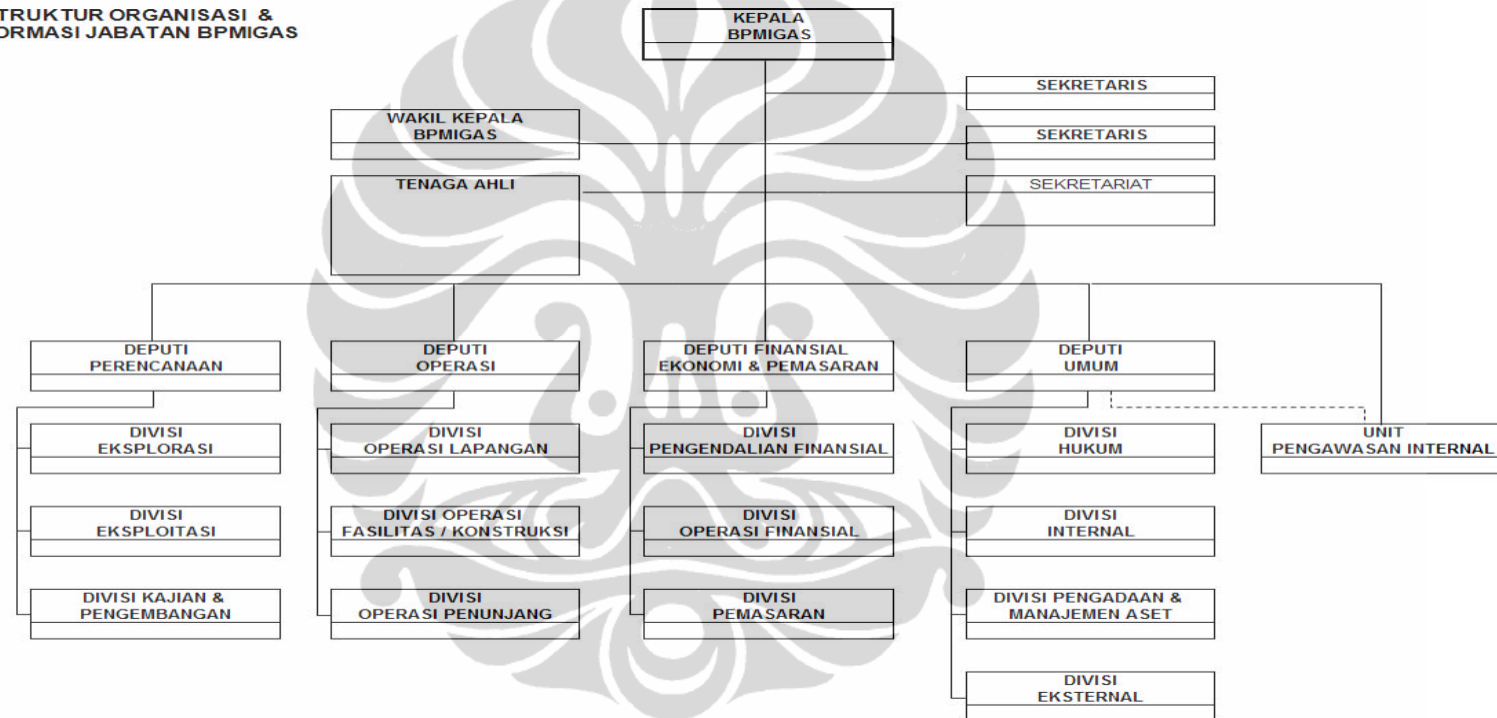
Work Program & Budget. <http://www.bpmigas.com>



Lampiran 7: Bagan Organisasi Perwakilan BPMIGAS

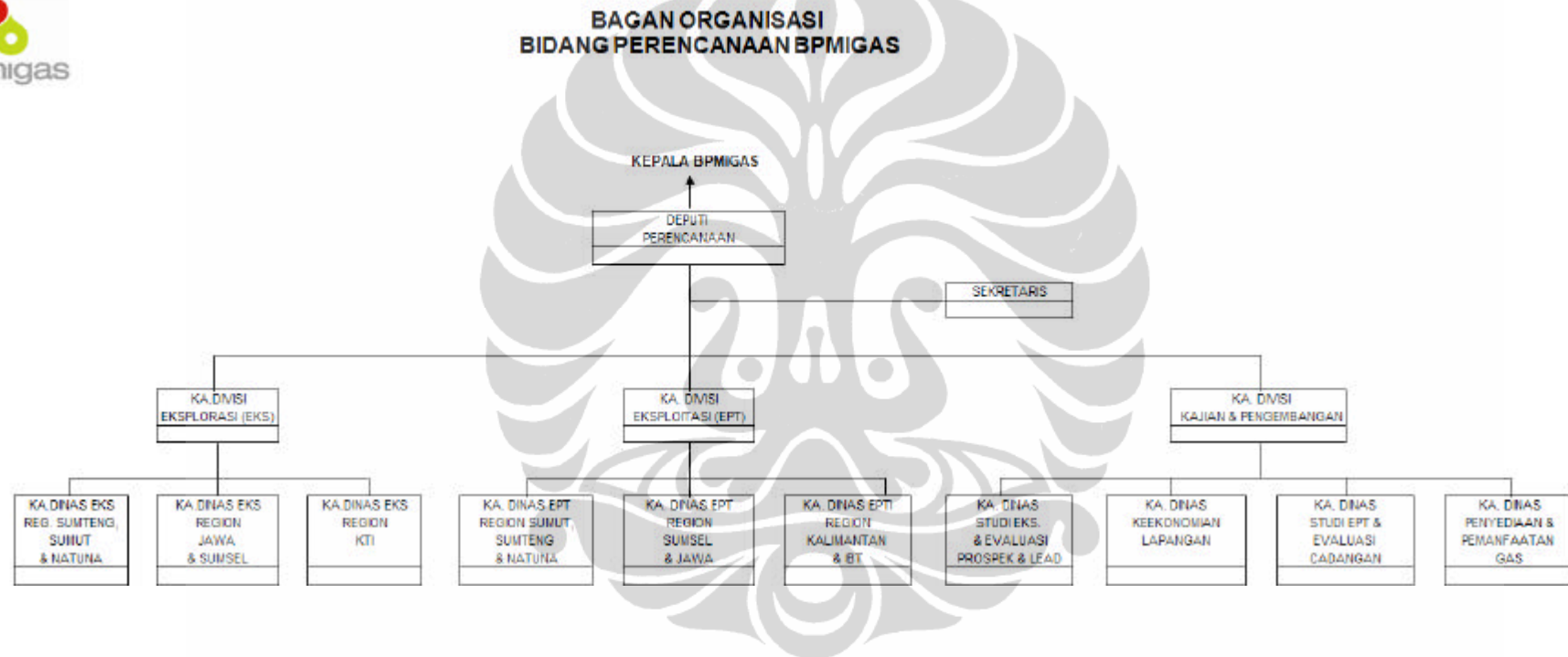


STRUKTUR ORGANISASI &
FORMASI JABATAN BPMIGAS

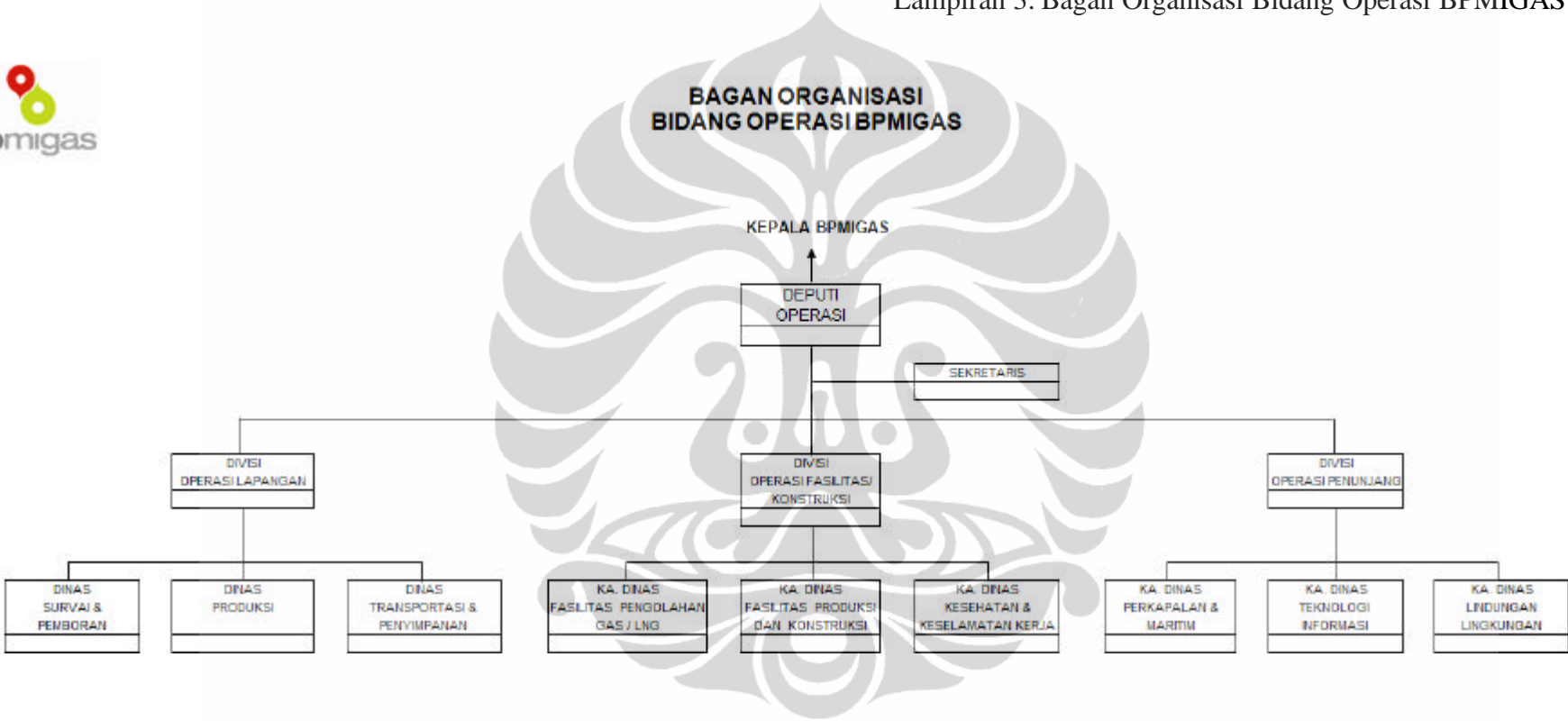




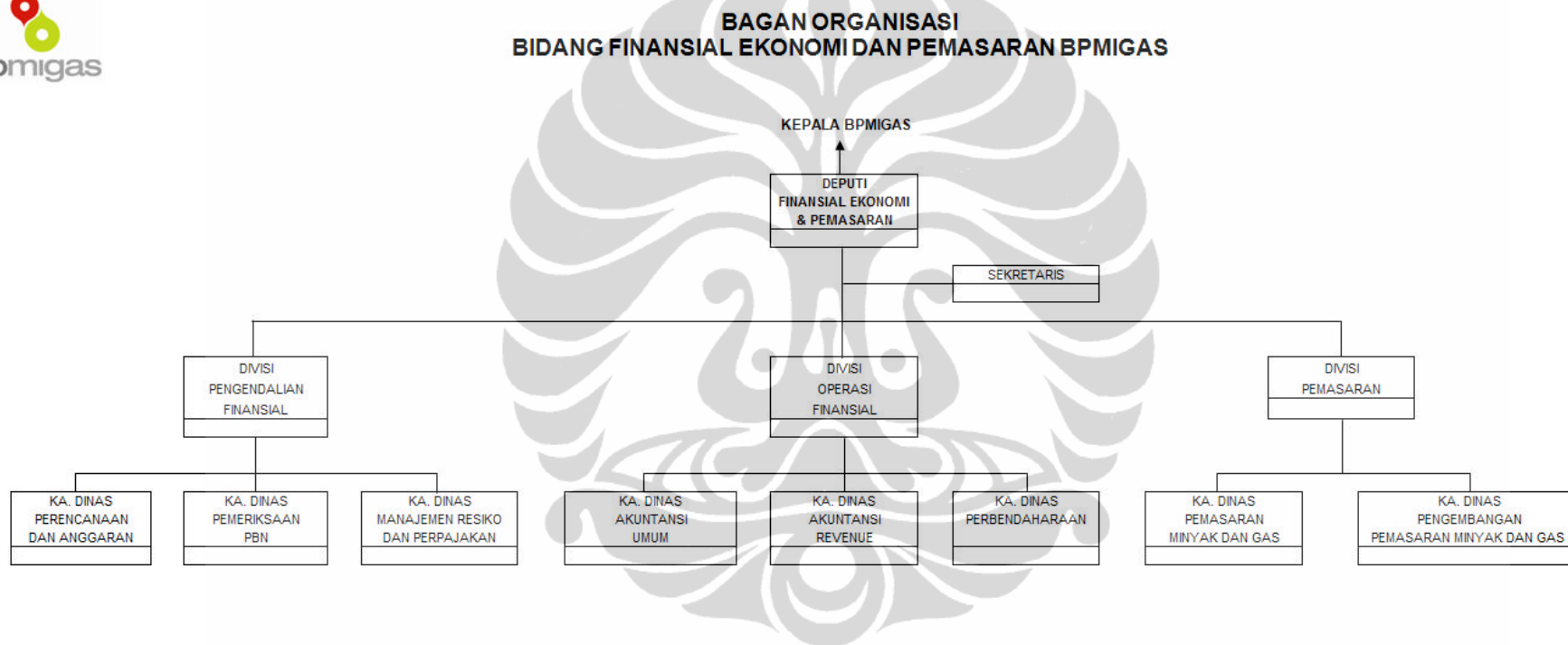
Lampiran 2: Bagan Organisasi Bidang Perencanaan



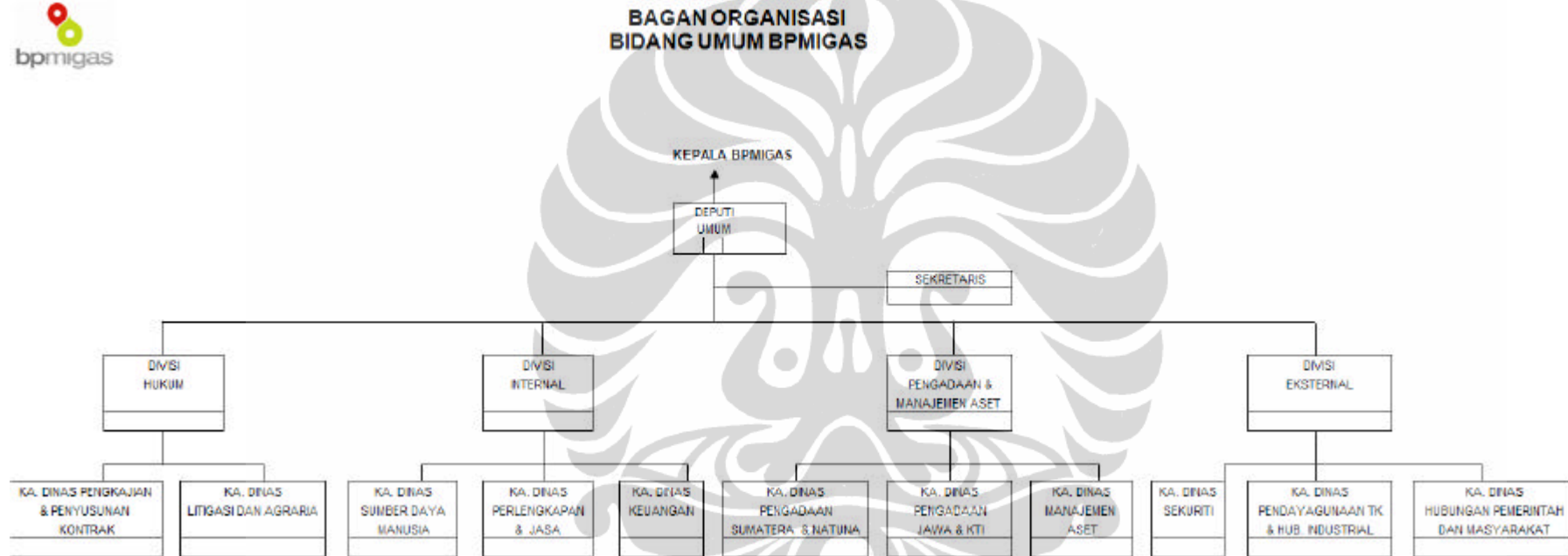
Lampiran 3: Bagan Organisasi Bidang Operasi BPMIGAS



Lampiran 4: Bagan Organisasi Bidang Finansial Ekonomi dan Pemasaran BPMIGAS



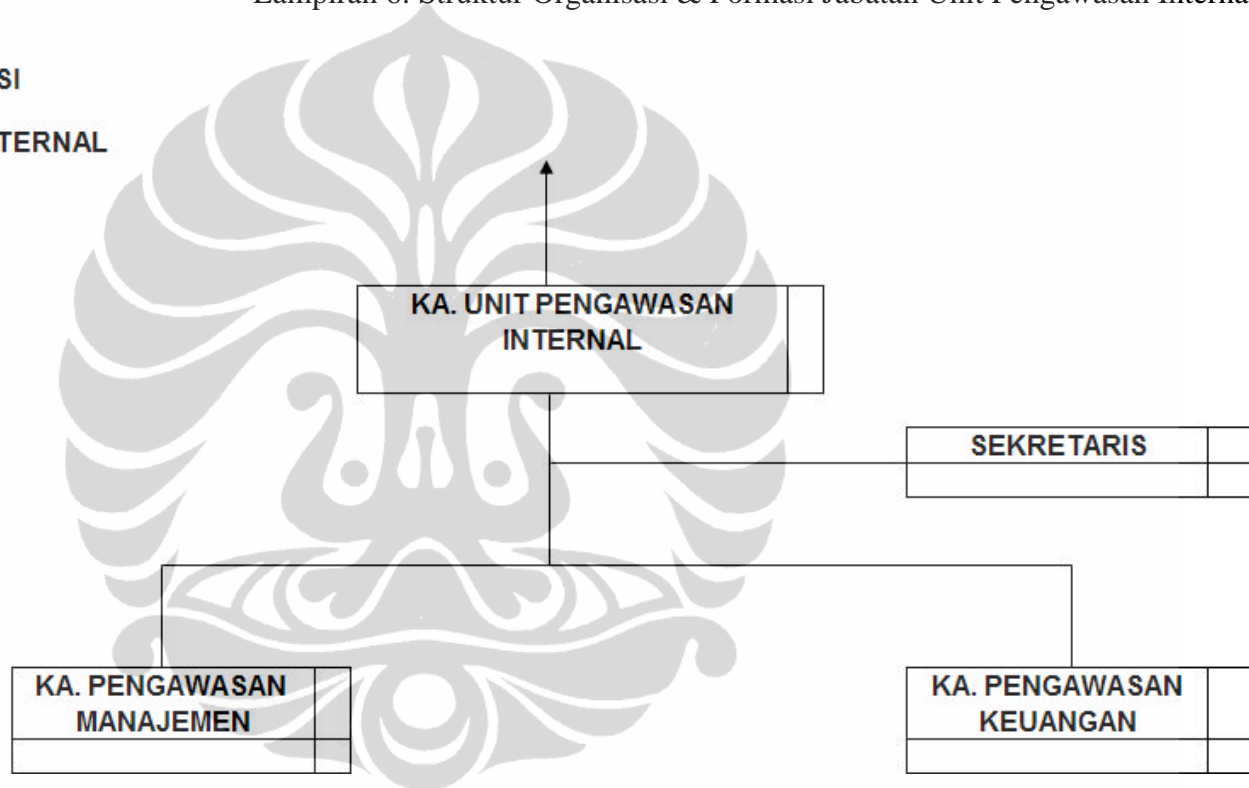
Lampiran 5: Bagan Organisasi Bidang Umum BPMIGAS



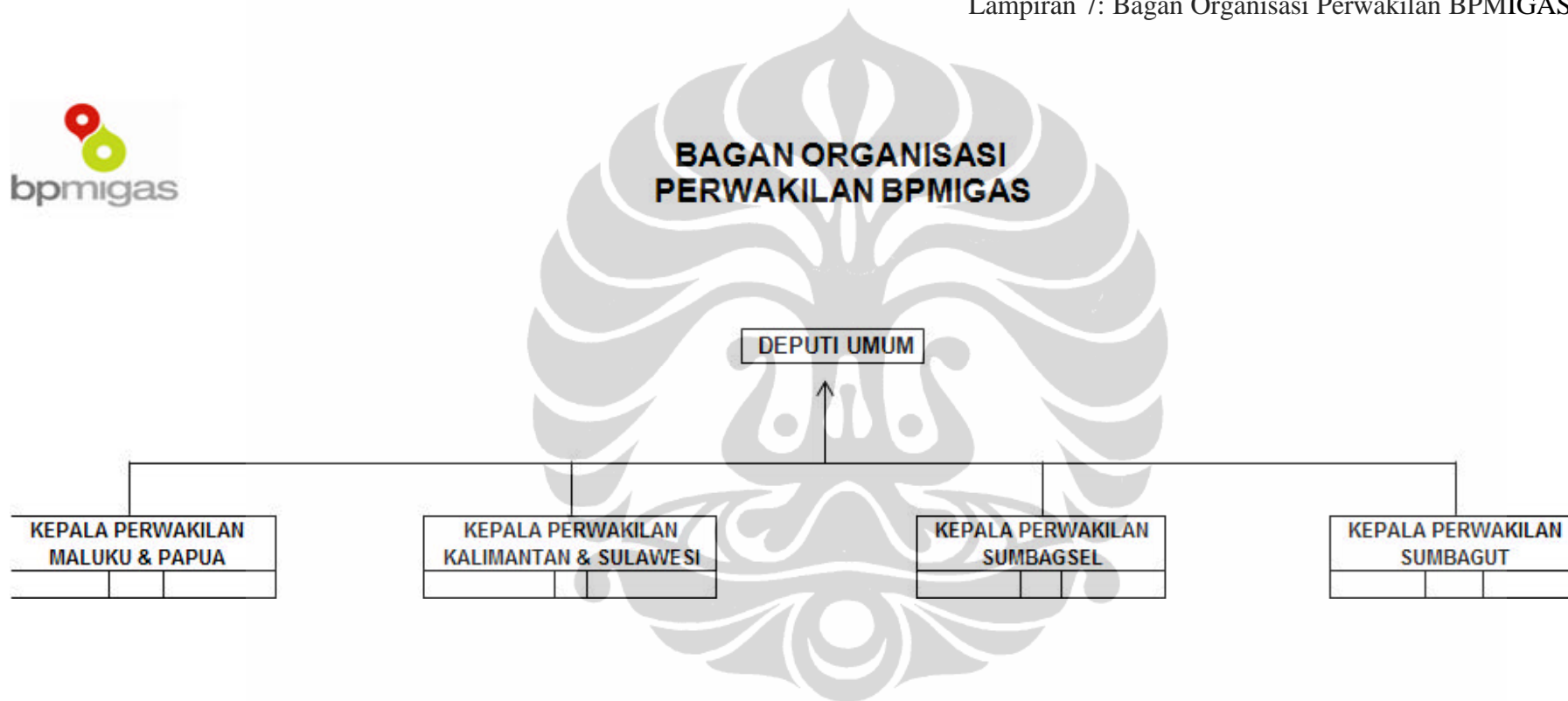
Lampiran 6: Struktur Organisasi & Formasi Jabatan Unit Pengawasan Internal



**STRUKTUR ORGANISASI
& FORMASI JABATAN
UNIT PENGAWASAN INTERNAL**



Lampiran 7: Bagan Organisasi Perwakilan BPMIGAS



Lampiran 8: Daftar Kontraktor PSC Blok Eksplorasi

DAFTAR KONTRAKTOR PSC BLOK EKSPLORASI

NO	N A M A KKKS	REGION	WILAYAH KERJA
1	Zaratex NV	1	Lhokseumawe NAD
2	Transworld Exploration	1	Seruway - NAD
3	Indoreach Exploration Ltd	1	Pari - Natuna Sea
4	Sanyen Oil & Gas Pte, Ltd	1	Anambas - Natuna Sea
5	CNOOC Batanghari	1	Batanghari - Jambi
6	Sumatera Persada Energy	1	West Kampar - C. Sumatra
7	Ranhill Energy SDN BHD	1	South CPP
8	PT. Tiga Musim Mas Jaya	1	West Tungkal
9	Lundin Oil & Gas BV	1	Baronang
10	PT. Karya Inti Petroleum	1	Lirik II
11	Pasific Oil & Gas	1	Kisaran - Central Sumatera
12	Ranhil Jambi Batugajah Pte Ltd	1	Batugajah - Jambi
13	Mosesa Petroleum Ltd	1	Tonga - Sumatera Utara
14	West Natuna Exp	1	Duyung - Natuna Sea
15	Genting Oil Natuna Pte, Ltd	1	NW Natuna - Natuna Sea
16	Eni Krueng Mane Ltd	1	OffshKrueng Mane
17	Samantaka Mineral Prima	1	GMB Indragiri Hulu - Riau
18	Serica East Seruway BV	1	East Seruway
19	PT Radiant Nusa Investama- PC(SKR) International Ltd.	1	South West Bukit Barisan
20	Pearl Oil (Tachylite) ltd	1	Kerapu
21	Gujarat State Petroleum Corp Ltd-Essar E&P Ltd	1	South East Tungkal
22	Orna International	2	Rembang
23	PT. Sinochem Petroelum E&P	2	Madura
24	Tately NV	2	Palmerah - Sumsel
25	Anandarko Ind. Company	2	NE Madura III - Jawa Timur
26	BPREC	2	Citarum
27	Tropik Pandan Energi	2	Pandan - Sumsel
28	Star Energy (Sekayu) Ltd	2	Sekayu - Sumsel
29	Tiara Bumi Petroleum	2	West Air Komering
30	South Madura Exploration	2	South Madura - E Java
31	M3nergy gamma SDN BHD	2	Ujung Kulon
32	KNOC Nemtwo	2	N.E. Madura II - East Java
33	Insani Bian Perkasa	2	Alas Jati - Jatim
34	CJSC Sintezmomeftegaz	2	East Bawean I
35	Husky Oil Bawean Ltd	2	East Bawean II - East Java
36	Mitra Energi (Sibaru) Ltd	2	Sibaru - East Java
37	PT. Seleraya Merangin II	2	Merangin II - Jambi
38	Endeavour Bengkulu	2	Bengkulu
39	Aditya Nugraha Pratama Lampung	2	Lampung 1 - Java Sea
40	PT. Sele Raya Belida	2	Belida
41	Green Star Assets	2	East Kangean
42	PT. Medco E&P Indonesia	2	CBM Sekayu
43	Cahaya Baturaja	2	Air Komering - Sumsel
44	KNOC Nemone	2	N.E Madura 1 East Java
45	Pearl Energy Ltd-Australian worldwide Expl. Ltd.	2	East Muria
46	Esso Expl. International Ltd.	2	Gunting
47	Petrojava North Kangean	2	North Kangean - jatim
48	Husky Energy Int. Corporation	2	North Sumbawa II
49	Lundin Oil & Gas BV	3	Cakalang
50	Eni Muara Bakau Ltd	3	Muara Bakau - Selat Makasar
51	Ridlatama Mining Utama	3	GMB Bentian Besar - Kaltim
52	Kaizan Oil LLC - Nikko Resources (Overseas II) Ltd.	3	South East Ganai I
53	Kaizan Oil & Gas LLC - Marathon Indonesia New Ventures Ltd	3	Bone Bay
54	PT. Pertamina Hulu Energi Metana Kalimantan A - Sangata West CBM Inc.	3	GMB Sangata I

Lampiran 8: Daftar Kontraktor PSC Blok Eksplorasi (lanjutan)

DAFTAR KONTRAKTOR PSC BLOK EKSPLOKASI

NO	N A M A KKKS	REGION	WILAYAH KERJA
55	Eni West Timor	3	West Timor
56	Eni Ambalat Ltd	3	Ambalat - Kaltim
57	Altar Sociedade de Investimento	3	Barito - C.Kalimantan
58	Eni Bukat	3	Bukat - Kaltim
59	Chevron Indonesia Venture Ltd.	3	West Papua I
60	Hess (Indonesia - Semai)	3	Semai V
61	PT. Suma Sarana	3	Semai III
62	ConocoPhillips	3	Arafura Sea
63	Eni Bulungan BV	3	Bulungan - Kaltim
64	Kutai Etam Petroleum Seinangka	3	Seinangka, Senipah - Kaltim
65	Murphy Overseas Ventures Inc.-PTTEP Public Company Ltd. Inpex Corp	3	Semai II
66	PT. Kutai Timur Resources - Salamander Energy (SE Sangatta) Ltd	3	South East Sangatta
67	PT. Barito Basin Gas	3	GMB Barito Banjar II
68	Kaizan Oil LLC - Nikko Resources (Overseas II) Ltd.	3	West Sageri
69	Anandarko Papalang	3	Papalang - Selat Makasar
70	PT. Putindo Bintech	3	Buton I
71	Sigma Energi Petronas	3	Enrekang - Sulawesi
72	Stat Oil	3	Karama
73	Exxon Mobil Expl.	3	Surumana - Makassar Strait
74	Nations	3	Rombebai
75	Tately Budong Budong NV	3	Budong Budong - Sulawesi
76	Halmahera petroleum	3	Halmahera
77	Serica Kutai	3	Kutai - Klaimantan Timur
78	Inparol (Indonesia Papua Petr.) Pte, Ltd	3	Asmat - Papua
79	ConocoPhillips (Warim) Ltd	3	Warim - Papua
80	ConocoPhillips (Amborip VI)	3	Amborip VI - Arafura
81	ConocoPhillips (Kuma) Ltd	3	Kuma - Makassar Strait
82	Pearl Energy (Salawati) Pte Ltd	3	Salawati - Papua
83	Kaizan Oil & Gas LLC - Nikko Resources (Overseas IV) Ltd.	3	South Matindok
84	Adelphi Energy II	3	South Benggara II
85	Kutai west CBM Inc - Newton Energy Capital Ltd.	3	GMB Kutai
86	Biak Petroleum LLC-Niko Resources (Overseas VI) Ltd	3	Seram
87	Japex Buton Ltd	3	Buton - SE Sulawesi
88	Pandawa Prima Lestari	3	Wain Kaltim
89	CNOOC Palung Aru Ltd	3	SE Palung Aru - Maluku
90	Talisman (South Makasar) Ltd	3	Sageri - Makasar
91	Exxon Mobil Expl	3	Mandar - Sulawesi Barat
92	Nations	3	Yapen
93	Kalimantan Kutai Energi	3	West Sangata Kaltim
94	Inpex Masela Ltd.	3	Masela
95	Chevron Indonesia Venture Ltd.	3	West Papua III
96	PT. Indobarambai Gas Methan	3	GMB Barito Banjar I
97	Genting Oil Kasuri	3	Kasuri
98	Salamander (Bontang)	3	Bontang - Kaltim
99	Murphy Overseas	3	South Barito
100	Provident (Tarakan) Ltd	3	Tarakan - Kalimantan
101	Chevron East Ambalat	3	East Ambalat
102	Anandarko Popodi	3	Popodi - Selat Makasar
103	APD Biliton	3	Biliton
104	Anandarko Ind. Nunukan	3	Nunukan Kaltim
105	Total E & P Mahakam	3	SE Mahakam - Kaltim
106	SPC & E&P Upstream Pte. Ltd.	3	Mahakam hilir
107	Ephindo Sangatta West CBM Inc.	3	West Sangatta
108	Continental Geopatra	3	Benggara II

Lampiran 9: Daftar Kontraktor PSC Blok Produksi

DAFTAR KONTRAKTOR PSC BLOK PRODUKSI

NO	N A M A KKKS	REGION	WILAYAH KERJA
1	Petroselat Ltd	1	- Selat Panjang
2	Kondur Petroleum SA	1	- Malacca Strait
3	Kalila Ltd	1	- Bentu
4	Kalila Ltd	1	- Korinci Baru
5	BOB PT. Bumi Siak Pusako - Pertamina EP	1	- CPP
6	PetroChina International Ltd.	1	- Jabung
7	PT Chevron Pacific Indonesia	1	- MFK
8	PT Chevron Pacific Indonesia	1	- Siak
9	PT Chevron Pacific Indonesia	1	- Rokan
1	Medco Energy E&P Indonesia	1	- Blok A
2	Pearl Oil (Tungkal) Ltd	1	- Tungkal
3	JOB-Pertamina Costa Int.Group,Ltd	1	- Gebang
4	Star Energy (Kakap) Ltd	1	- Kakap
5	Premier Oil Natuna Sea B.V.	1	- Natuna Sea "A"
6	Exxon Mobil Indonesia Inc	1	- BEE
7	Exxon Mobil Indonesia Inc	1	- NSO
8	Exxon Mobil Indonesia Inc	1	- PASE
9	ConocoPhillips Indonesia Inc	1	- Natuna "B"
10	ConocoPhillips Indonesia Inc	1	- South Jambi
11	PT Pertamina EP Region I	1	
12	PetroChina International Ltd.	2	- Bangko
13	Husky Oil (Madura) Ltd	2	- Madura
14	Lapindo Brantas Inc.	2	- Brantas
15	Camar Resources Canada Inc	2	- Bawean
16	JOB-Pertamina Golden Spike Ind. Ltd	2	- Raja
17	BP Indonesia	2	- ONWJ
18	JOB-Pertamina Amerada Hess Jambi M.	2	- Jambi Merang
19	JOB-Pertamina Talisman (OK)	2	- Ogan Komering
20	Mobil Cepu Ltd.	2	- Cepu
21	ConocoPhillips Indonesia Inc	2	- Corridor PSC
22	Petronas Carigali	2	- Muriah
23	Santos Ltd	2	- Madura & Sampang
24	CNOOC SES Ltd	2	- S.E. Sumatera
25	JOB Pertamina - PetroChina East Java	2	- Tuban
26	Kodeco Energy Co.Ltd	2	- Madura
27	Amerada Hess (Indonesia Pangkah) Ltd	2	- Pangkah
28	Kangean Energy Indonesia	2	- Kangean
29	Medco Energy E&P Indonesia	2	- Rimau
30	Medco Energy E&P Indonesia	2	- S & C Sumatera
31	Medco Energy E&P Indonesia	2	- Lematang
32	Perusda Benuo Taka	3	- Wailawi
33	Energy Equity (Sengkang) Pty. Ltd.	3	- Sengkang
34	Kalrez Petroleum (Seram) Ltd.	3	- Seram
35	PetroChina (Bermuda) Ltd.	3	- Kepala Burung
36	Total E&P Indonesia	3	- Mahakam
37	Total E&P Indonesia	3	- Tengah
38	BP Indonesia	3	- Muturi
39	BP Indonesia	3	- Wiriagar
40	BP Indonesia	3	- Berau
41	Elnusa Bangkanai Energy	3	- Bangkanai
42	JOB-P Medco E&P Ind.Tomori & Simenggaris	3	- Senoro Toili
43	JOB-P Medco E&P Ind.Tomori & Simenggaris	3	- Simenggaris
44	Medco Energy E&P Indonesia	3	- Tarakan
45	Citic Seram Energy Ltd.	3	- Seram Non Bula
46	PearOil Sebuku	3	- Sebuku
47	Chevron Rapak Ltd.	3	- Rapak
48	Chevron Ganal Ltd.	3	- Ganal
49	JOB-Pertamina PetroChina Salawati	3	- Salawati
50	Chevron Indonesia Co.	3	- Makassar Strait
51	Chevron Indonesia Co.	3	- East Kalimantan
52	Vico Indonesia	3	- East Kalimantan

Lampiran 10: Form Financial Status WP&B Original

FORM FINANCIAL STATUS WP&B ORIGINAL			
DESCRIPTION	2003 (ORI/REV) (MUSS)	2004 (ORI) (MUSS)	REMARK
1. LIFTING Oil (MBBL) Gas (MMCF) LPG / LNG (MBBL)			Kenapa Under / over
2. HARGA Oil (US\$/BBL) Gas (US\$/MCF) LPG / LNG (US\$/BBL)			
3. GROSS REVENUE (total) Oil Gas LPG / LNG TOTAL			
4. FTP			
5. COST RECOVERY (total) Oil Gas LPG / LNG			
6. INVESTMENT CREDIT			
7. COST RECOVERABLE (total) Oil Gas LPG / LNG			
FORM FINANCIAL STATUS WP&B ORIGINAL			
DESCRIPTION	2003 (ORI/REV) (MUSS)	2004 (ORI) (MUSS)	REMARK
8. EQUITY TO BE SPLIT			
9. GOVERNMENT INCOME			
10. NET CONTRACTOR SHARE			
11. COST UNIT			
- RECOVERABLE COST Oil (US\$/BBL) Gas (US\$/MCF) LPG / LNG (US\$/BBL)			Cost Recoverable/Lifting
- PRODUCTION COST Oil (US\$/BBL) Gas (US\$/MCF) LPG / LNG (US\$/BBL)			Total Production Cost/Lifting
- DIRECT PRODUCTION COST Oil (US\$/BBL) Gas (US\$/MCF) LPG / LNG (US\$/BBL)			Total Production Cost/Production
12. UNRECOVERED OTHER COSTS			1s, Qtr - 4th Qtr

Lampiran 11 : Form Financial Status WP&B Revisi

FORM FINANCIAL STATUS WP&B REVISI			
DESCRIPTION	2003 (ORIGINAL) (MUS\$)	2004 (REVISI) (MUS\$)	REMARK
1. LIFTING			Kenapa Under / over
Oil (MBBL)			
Gas (MMCF)			
LPG / LNG (MBBL)			
2. HARGA			
Oil (US\$/BBL)			
Gas (US\$/MCF)			
LPG / LNG (US\$/BBL)			
3. GROSS REVENUE (total)			
Oil			
Gas			
LPG / LNG			
TOTAL			
4. FTP			
5. COST RECOVERY (total)			
Oil			
Gas			
LPG / LNG			
6. INVESMENT CREDIT			
7. COST RECOVERABLE (total)			
Oil			
Gas			
LPG / LNG			
FORM FINANCIAL STATUS WP&B REVISI			
DESCRIPTION	2003 (ORIGINAL) (MUS\$)	2004 (REVISI) (MUS\$)	REMARK
8. EQUITY TO BE SPLIT			
9. GOVERNMENT INCOME			
10. NET CONTRACTOR SHARE			
11. COST UNIT			
- RECOVERABLE COST			Cost Recoverable/Lifting
Oil (US\$/BBL)			
Gas (US\$/MCF)			
LPG / LNG (US\$/BBL)			
- PRODUCTION COST			Total Production Cost/Lifting
Oil (US\$/BBL)			
Gas (US\$/MCF)			
LPG / LNG (US\$/BBL)			
- DIRECT PRODUCTION COST			Total Production Cost/Production
Oil (US\$/BBL)			
Gas (US\$/MCF)			
LPG / LNG (US\$/BBL)			
12. UNRECOVERED OTHER COSTS			1s, Qtr - 4th Qtr

Lampiran 12: Form Financial Status WP&B Monitoring Kw II

FORM FINANSIAL STATUS WP&B MONITORING KW. II							
DESCRIPTION	2003 ACTUAL (MUSS)	2004		Year To Date KW II			REMARK
		ORIGINAL	REVISED	BUDGET	ACTUAL	VARIAN %	
1. LIFTING Oil (MBBL) Gas (MMCF) LPG / LNG (MBBL)							Kenapa Under/over
2. HARGA Oil (US\$/BBL) Gas (US\$/MCF) LPG / LNG (US\$/BBL)							
3. GROSS REVENUE (total) Oil Gas LPG / LNG TOTAL							
4. FTP							
5. COST RECOVERY (total) Oil Gas LPG / LNG							
6. INVESTMENT CREDIT							
7. COST RECOVERABLE (total) Oil Gas LPG / LNG							
FORM FINANSIAL STATUS WP&B MONITORING KW. II							
DESCRIPTION	2003 ACTUAL (MUSS)	2004		Year To Date KW II			REMARK
		ORIGINAL	REVISED	BUDGET	ACTUAL	VARIAN %	
8. EQUITY TO BE SPLIT							Cost Recoverable/Lifting Total Production Cost/Lifting Total Production Cost/Production
9. GOVERNMENT INCOME							
10. NET CONTRACTOR SHARE							
11. COST UNIT - RECOVERABLE COST Oil (US\$/BBL) Gas (US\$/MCF) LPG / LNG (US\$/BBL)							
- PRODUCTION COST Oil (US\$/BBL) Gas (US\$/MCF) LPG / LNG (US\$/BBL)							
- DIRECT PRODUCTION COST Oil (US\$/BBL) Gas (US\$/MCF) LPG / LNG (US\$/BBL)							
FORM FINANSIAL STATUS WP&B MONITORING KW. II							
DESCRIPTION	2003 ACTUAL (MUSS)	2004		Year To Date KW II			REMARK
		ORIGINAL	REVISED	BUDGET	ACTUAL	VARIAN %	
12. UNRECOVERED OTHER COSTS							1s, Qtr - 4th Qtr
13. PROGRAM Seismic (Current Year) Onshore 2D (km) 3D (km ²) Offshore 2D 3D Expl Drilling (Current Year) Oil Well Gas Well Success Ratio (%) Dev. Drilling (Current Year) Total Well Oil + Condensate Gas Workover							
14. TOTAL EXPENDITURES CAPITAL EXPENCE							

Lampiran 13: Form Financial Status Budget vs Current Outlook

FORM FINANSIAL STATUS BUDGET VS CURRENT OUTLOOK					
DESCRIPTION	BUDGET		CURRENT OUTLOOK (MUSS)	UNDER/OVER	REMARK
	AWAL (MUSS)	REVISI (MUSS)			
1. LIFTING					Kenapa Under/over
Oil (MBBL)					
Gas (MMCF) LPG / LNG (MBBL)					
2. HARGA					
Oil (US\$/BBL)					
Gas (US\$/MCF) LPG / LNG (US\$/BBL)					
3. GROSS REVENUE (total)					
Oil					
Gas					
LPG / LNG					
TOTAL					
4. FTP					
5. COST RECOVERY (total)					
Oil					
Gas					
LPG / LNG					
6. INVESMENT CREDIT					
7. COST RECOVERABLE (total)					
Oil					
Gas					
LPG / LNG					
FORM FINANSIAL STATUS BUDGET VS CURRENT OUTLOOK					
DESCRIPTION	BUDGET		CURRENT OUTLOOK (MUSS)	UNDER/OVER	REMARK
	AWAL (MUSS)	REVISI (MUSS)			
8. EQUITY TO BE SPLIT					
9. GOVERNMENT INCOME					
10. NET CONTRACTOR SHARE					
11. COST UNIT					
- RECOVERABLE COST					Cost Recoverable/Lifting
Oil (US\$/BBL)					
Gas (US\$/MCF)					
LPG / LNG (US\$/BBL)					
- PRODUCTION COST					Total Production Cost/Lifting
Oil (US\$/BBL)					
Gas (US\$/MCF)					
LPG / LNG (US\$/BBL)					
- DIRECT PRODUCTION COST					Total Production Cost/Production
Oil (US\$/BBL)					
Gas (US\$/MCF)					
LPG / LNG (US\$/BBL)					
12. UNRECOVERED OTHER COSTS					1st Qtr - 4th Qtr