

**Lampiran 4. Realisasi Anggaran Pendapatan dan Belanja Daerah Kabupaten Pekalongan  
Tahun Anggaran 2009 ( per bulan)**

| NO.URUT  | URAIAN  | TAHUN 2009            |                       |                       |                       |                       |                       |                       |                       |                       |                        |                       |                       |
|----------|---|-----------------------|-----------------------|-----------------------|-----------------------|-----------------------|-----------------------|-----------------------|-----------------------|-----------------------|------------------------|-----------------------|-----------------------|
|          |   | 1                     | 2                     | 3                     | 4                     | 5                     | 6                     | 7                     | 8                     | 9                     | 10                     | 11                    | 12                    |
|          |   | Januari               | Februari              | Maret                 | April                 | Mei                   | Juni                  | Juli                  | Agustus               | September             | Oktober                | Nopember              | Desember              |
| <b>4</b> | <b>PENDAPATAN DAERAH</b>                          |                       |                       |                       |                       |                       |                       |                       |                       |                       |                        |                       |                       |
| 4.1      | Pendapatan Asli Daerah                            | 3.475.013.317         | 2.450.070.607         | 4.619.898.653         | 2.447.897.409         | 4.778.796.352         | 5.493.362.289         | 3.622.672.475         | 7.013.598.132         | 3.245.732.642         | 8.547.830.608          | 3.141.277.688         | 9.632.169.470         |
| 4.1.1    | Hasil Pajak Daerah                                | 809.463.729           | 755.856.902           | 712.092.665           | 34.126.000            | 735.926.999           | 1.630.917.998         | 143.412.150           | 1.703.227.059         | 902.472.198           | 918.377.865            | 921.159.903           | 926.276.315           |
| 4.1.2    | Hasil Retribusi Daerah                            | 1.993.994.885         | 1.222.747.472         | 3.435.301.636         | 1.609.687.253         | 2.117.898.072         | 3.275.922.884         | 3.012.159.018         | 4.983.925.828         | 1.992.034.322         | 7.331.328.397          | 1.913.689.365         | 8.081.094.678         |
| 4.1.3    | Hasil Pengelolaan Kekayaan Daerah yang Dipisahkan | 79.400.000            |                       |                       | 308.787.980           | 1.470.365.566         | 25.113.217            | 100.248.892           | 7.063.000             | 102.500.000           |                        |                       | 179.963.500           |
| 4.1.4    | Lain-lain Pendapatan Asli Daerah yang Sah         | 592.154.703           | 471.466.233           | 472.504.352           | 495.296.176           | 454.605.715           | 561.408.190           | 366.852.415           | 319.382.245           | 248.726.122           | 298.124.346            | 306.428.420           | 444.834.977           |
| 4.2      | <b>DANA PERIMBANGAN</b>                           | <b>79.523.822.881</b> | <b>39.703.098.097</b> | <b>58.626.843.445</b> | <b>41.508.974.655</b> | <b>39.853.639.276</b> | <b>40.760.587.178</b> | <b>42.952.599.236</b> | <b>45.796.050.673</b> | <b>41.014.583.848</b> | <b>87.884.537.587</b>  | <b>40.448.699.485</b> | <b>9.580.643.923</b>  |
| 4.2.1    | Bagi Hasil Pajak/Bagi Hasil Bukan Pajak           | 315.748.881           | 99.061.097            | 823.306.445           | 1.904.937.655         | 249.602.276           | 1.156.550.178         | 3.348.562.236         | 6.192.013.673         | 1.410.546.848         | 5.815.000.587          | 844.664.485           | 9.580.643.923         |
| 4.2.2    | Dana Alokasi Umum                                 | 79.208.074.000        | 39.604.037.000        | 39.604.037.000        | 39.604.037.000        | 39.604.037.000        | 39.604.037.000        | 39.604.037.000        | 39.604.037.000        | 39.604.037.000        | 39.604.037.000         | 39.604.037.000        |                       |
| 4.2.3    | Dana Alokasi Khusus                               |                       |                       | 18.199.500.000        |                       |                       |                       |                       |                       |                       | 42.465.500.000         |                       |                       |
| 4.3      | <b>LAIN-LAIN PENDAPATAN DAERAH YANG SAH</b>       | <b>1.559.006</b>      | <b>2.113.694</b>      | <b>379.683.587</b>    | <b>6.211.686</b>      | <b>4.966.598.060</b>  | <b>1.280.055.077</b>  | <b>431.246.148</b>    | <b>4.883.319.156</b>  | <b>2.736.771.200</b>  | <b>5.177.000.000</b>   | <b>9.855.769.336</b>  | <b>17.901.104.014</b> |
| 4.3.1    | Pendapatan Hibah                                  |                       |                       |                       |                       |                       |                       |                       |                       |                       |                        |                       |                       |
| 4.3.3    | Dana Bagi Hasil Pajak Dari Provinsi               | 1.559.006             | 2.113.694             | 4.683.587             | 6.211.686             | 4.678.598.060         | 1.280.055.077         | 6.246.148             | 4.724.519.156         | 765.321.200           |                        | 7.573.569.336         | 4.546.429.014         |
| 4.3.4    | Dana Penyesuaian dan Otonomi Khusus               |                       |                       |                       |                       |                       |                       |                       |                       |                       |                        |                       | 11.466.675.000        |
| 4.3.5    | Bantuan Keuangan dari Pemerintah Daerah Lainnya   |                       |                       | 375.000.000           |                       | 288.000.000           |                       | 425.000.000           | 158.800.000           | 1.971.450.000         | 5.177.000.000          | 2.282.200.000         | 1.888.000.000         |
|          | <b>JUMLAH PENDAPATAN</b>                          | <b>83.000.395.204</b> | <b>42.155.282.398</b> | <b>63.626.425.685</b> | <b>43.963.083.750</b> | <b>49.599.033.688</b> | <b>47.534.004.544</b> | <b>47.006.517.859</b> | <b>57.692.967.961</b> | <b>46.997.087.690</b> | <b>101.609.368.195</b> | <b>53.445.746.509</b> | <b>37.113.917.407</b> |
| <b>5</b> | <b>BELANJA DAERAH</b>                             |                       |                       |                       |                       |                       |                       |                       |                       |                       |                        |                       |                       |
| 5.1      | <b>BELANJA TIDAK LANGSUNG</b>                     | <b>24.437.773.031</b> | <b>28.787.827.497</b> | <b>32.319.558.374</b> | <b>45.231.980.504</b> | <b>34.003.254.005</b> | <b>59.681.597.590</b> | <b>42.329.543.871</b> | <b>42.063.964.163</b> | <b>43.051.911.219</b> | <b>42.929.768.745</b>  | <b>34.687.365.724</b> | <b>41.806.087.195</b> |
| 5.1.1    | Belanja Pegawai                                   | 24.350.024.467        | 25.992.701.497        | 29.805.428.874        | 36.340.621.839        | 29.899.197.505        | 57.875.147.090        | 31.321.580.646        | 31.715.901.123        | 35.071.661.069        | 31.512.271.569         | 31.947.684.455        | 33.110.060.950        |
| 5.1.2    | Belanja Bunga                                     | 87.748.564            |                       |                       |                       |                       |                       | 80.563.355            |                       |                       |                        |                       |                       |
| 5.1.5    | Belanja Bantuan Sosial                            |                       | 1.488.276.000         | 1.077.757.000         | 1.509.953.665         | 1.635.195.000         | 1.585.075.000         | 3.249.057.500         | 8.716.915.000         | 6.708.667.650         | 7.004.300.000          | 1.484.651.269         | 5.414.447.120         |
| 5.1.6    | Belanja Bagi Hasil Kepada Pemerintahan Desa       |                       |                       |                       |                       |                       | 60.225.000            |                       | 25.518.000            |                       |                        |                       | 18.572.625            |
| 5.1.7    | Belanja Bantuan Keuangan Kepada Pemerintahan Desa |                       | 1.225.050.000         | 1.244.035.000         | 7.381.405.000         | 2.446.725.000         | 65.250.000            | 7.607.509.870         | 1.472.355.000         | 1.271.582.500         | 4.286.679.676          | 1.248.530.000         | 2.590.887.500         |
| 5.1.8    | Belanja Tidak Terduga                             |                       | 81.800.000            | 192.337.500           |                       | 22.136.500            | 95.900.500            | 70.832.500            | 133.275.040           |                       | 126.517.500            | 6.500.000             | 672.119.000           |

(lanjutan lampiran 4)

| NO.URUT | URAIAN   | TAHUN 2009      |                |                |                  |                |                  |                  |                 |                  |                |                |                  |
|---------|--|-----------------|----------------|----------------|------------------|----------------|------------------|------------------|-----------------|------------------|----------------|----------------|------------------|
|         |  | 1               | 2              | 3              | 4                | 5              | 6                | 7                | 8               | 9                | 10             | 11             | 12               |
| 5.2     | <b>BELANJA LANGSUNG</b>  | 741.899.106     | 5.072.200.976  | 6.037.431.899  | 12.496.762.340   | 9.122.339.799  | 18.780.791.878   | 22.182.278.757   | 20.659.836.187  | 34.085.940.986   | 26.912.271.569 | 17.128.144.972 | 33.369.406.407   |
|         | Jumlah Belanja   | 25.179.672.137  | 33.860.028.473 | 38.356.990.273 | 57.728.742.844   | 43.125.593.804 | 78.462.389.468   | 64.511.822.628   | 62.723.800.350  | 77.137.852.205   | 69.842.040.314 | 51.815.510.696 | 75.175.493.602   |
|         | Surplus/(Defisit)  | 57.820.723.067  | 8.295.253.925  | 25.269.435.412 | (13.765.659.094) | 6.473.439.884  | (30.928.384.924) | (17.505.304.769) | (5.030.832.389) | (30.140.764.515) | 31.767.327.881 | 1.630.235.813  | (38.061.576.195) |
| 6       | <b>PEMBIAYAAN DAERAH</b>   |                 |                |                |                  |                |                  |                  |                 |                  |                |                |                  |
| 6.1     | <b>PENERIMAAN PEMBIAYAAN DAERAH</b>                                | 63.729.426.209  | -              | 2.500.000.000  | -                | -              | -                | -                | -               | -                | -              | -              | -                |
| 6.1.1   | Sisa Lebih Perhitungan Anggaran Daerah Tahun Sebelumnya            | 63.729.426.209  |                |                |                  |                |                  |                  |                 |                  |                |                |                  |
| 6.1.3   | Hasil Penjualan Kekayaan Daerah yang Dipisahkan                    |                 |                |                |                  |                |                  |                  |                 |                  |                |                |                  |
| 6.1.4   | Penerimaan Pinjaman Daerah   |                 |                |                |                  |                |                  |                  |                 |                  |                |                |                  |
| 6.1.7   | Dana Talangan  |                 |                | 2.500.000.000  |                  |                |                  |                  |                 |                  |                |                |                  |
|         | Jumlah Penerimaan Pembiayaan                                       | 63.729.426.209  | -              | 2.500.000.000  | -                | -              | -                | -                | -               | -                | -              | -              | -                |
| 6.2     | <b>PENGELUARAN PEMBIAYAAN DAERAH</b>                               | 97.408.212      | -              | -              | 2.500.000.000    | -              | -                | 97.408.212       | -               | 101.000.000      | -              | -              | 200.000.000      |
| 6.2.2   | Penyertaan Modal Pemerintah Daerah                                 |                 |                |                |                  |                |                  |                  |                 | 101.000.000      |                |                | 200.000.000      |
| 6.2.3   | Pembayaran Pokok Hutang  | 97.408.212      |                |                |                  |                |                  | 97.408.212       |                 |                  |                |                |                  |
| 6.2.4   | Pemberian Pinjaman Daerah  |                 |                |                |                  |                |                  |                  |                 |                  |                |                |                  |
| 6.2.5   | Dana Talangan  |                 |                |                | 2.500.000.000    |                |                  |                  |                 |                  |                |                |                  |
|         | Jumlah Pengeluaran Pembiayaan                                      | 97.408.212      | -              | -              | 2.500.000.000    | -              | -                | 97.408.212       | -               | 101.000.000      | -              | -              | 200.000.000      |
|         | Pembiayaan Netto   | 63.632.017.997  | -              | 2.500.000.000  | (2.500.000.000)  | -              | -                | (97.408.212)     | -               | (101.000.000)    | -              | -              | (200.000.000)    |
| 6.3     | <b>Sisa Lebih Pembiayaan Anggaran Tahun Berkenaan ( Sisa Kas )</b> | 121.452.741.064 | 8.295.253.925  | 27.769.435.412 | (16.265.659.094) | 6.473.439.884  | (30.928.384.924) | (17.602.712.981) | (5.030.832.389) | (30.241.764.515) | 31.767.327.881 | 1.630.235.813  | (38.261.576.195) |

Lampiran 5. Hasil Pengolahan Pendapatan Asli Daerah dengan Program Software SPSS

**Pendapatan Asli Daerah Kab.Pekalongan (dlm Juta)**

**Autocorrelations**

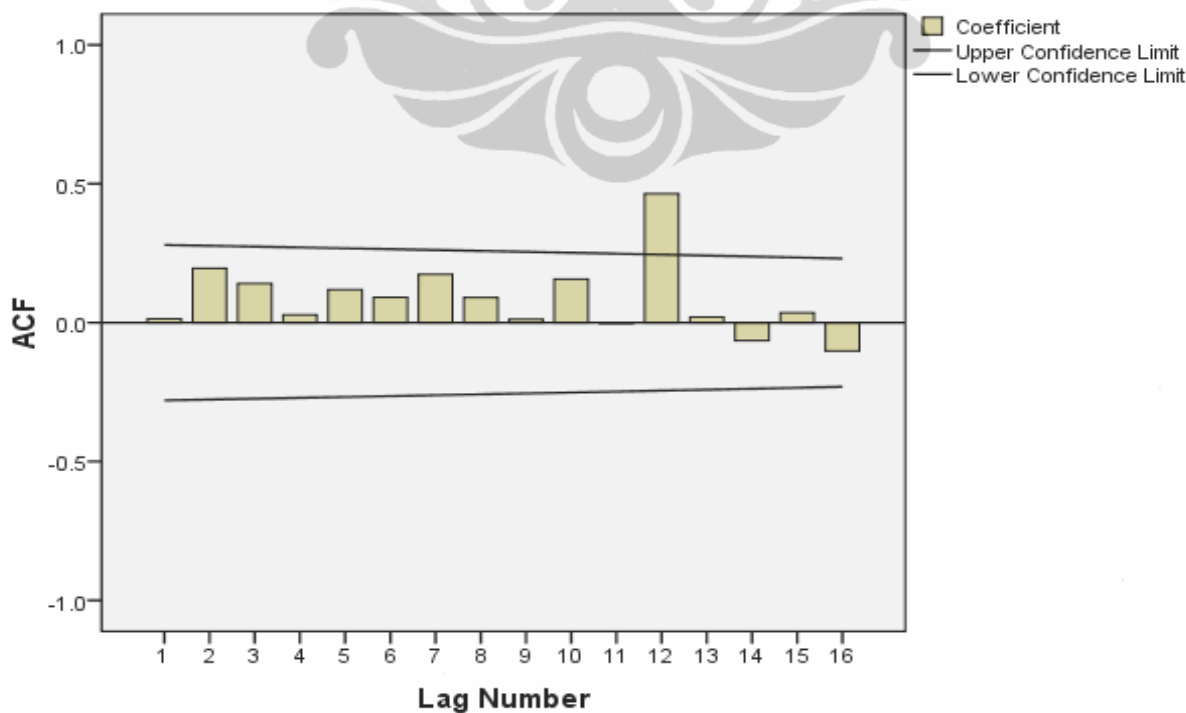
Series: Pendapatan Asli Daerah Kab.Pekalongan (dlm Juta)

| Lag | Autocorrelation | Std. Error <sup>a</sup> | Box-Ljung Statistic |    |                   |
|-----|-----------------|-------------------------|---------------------|----|-------------------|
|     |                 |                         | Value               | df | Sig. <sup>b</sup> |
| 1   | ,014            | ,140                    | ,009                | 1  | ,923              |
| 2   | ,195            | ,138                    | 2,002               | 2  | ,368              |
| 3   | ,140            | ,137                    | 3,054               | 3  | ,383              |
| 4   | ,028            | ,135                    | 3,098               | 4  | ,542              |
| 5   | ,119            | ,134                    | 3,884               | 5  | ,566              |
| 6   | ,092            | ,132                    | 4,364               | 6  | ,628              |
| 7   | ,174            | ,131                    | 6,136               | 7  | ,524              |
| 8   | ,090            | ,129                    | 6,623               | 8  | ,578              |
| 9   | ,012            | ,127                    | 6,632               | 9  | ,675              |
| 10  | ,157            | ,126                    | 8,190               | 10 | ,610              |
| 11  | -,002           | ,124                    | 8,190               | 11 | ,696              |
| 12  | ,464            | ,122                    | 22,563              | 12 | ,032              |
| 13  | ,020            | ,121                    | 22,592              | 13 | ,047              |
| 14  | -,065           | ,119                    | 22,886              | 14 | ,062              |
| 15  | ,036            | ,117                    | 22,980              | 15 | ,085              |
| 16  | -,102           | ,115                    | 23,765              | 16 | ,095              |

a. The underlying process assumed is independence (white noise).

b. Based on the asymptotic chi-square approximation.

**Pendapatan Asli Daerah Kab.Pekalongan (dlm Juta)**



## Seasonal Decomposition

Series Name: Pendapatan Asli Daerah Kab. Pekalongan (dlm Juta)

| DATE_    | Original Series | Moving Average Series | Ratio of Original Series to Moving Average Series (%) | Seasonal Factor (%) | Seasonally Adjusted Series | Smoothed Trend-Cycle Series | Irregular (Error) Component |
|----------|-----------------|-----------------------|---|---------------------|----------------------------|-----------------------------|-----------------------------|
| JAN 2006 | 1851,000        | .                     | .   | 75,5                | 2452,608                   | 2798,871                    | ,876                        |
| FEB 2006 | 2238,000        | .                     | .   | 74,7                | 2995,772                   | 2840,868                    | 1,055                       |
| MAR 2006 | 2712,000        | .                     | .   | 88,2                | 3074,224                   | 2924,861                    | 1,051                       |
| APR 2006 | 2485,000        | .                     | .   | 77,1                | 3222,880                   | 2859,708                    | 1,127                       |
| MAY 2006 | 3125,000        | .                     | .   | 141,3               | 2211,165                   | 2683,268                    | ,824                        |
| JUN 2006 | 2593,000        | .                     | .   | 103,6               | 2502,182                   | 2651,043                    | ,944                        |
| JUL 2006 | 2400,000        | 2566,6667             | 93,5  | 80,2                | 2991,569                   | 2695,598                    | 1,110                       |
| AUG 2006 | 2226,000        | 2596,4167             | 85,7  | 81,7                | 2724,495                   | 2747,541                    | ,992                        |
| SEP 2006 | 2575,000        | 2619,1667             | 98,3  | 98,2                | 2621,158                   | 2754,524                    | ,952                        |
| OCT 2006 | 2559,000        | 2670,0000             | 95,8  | 90,5                | 2826,750                   | 2652,476                    | 1,066                       |
| NOV 2006 | 2520,000        | 2662,4167             | 94,7  | 88,9                | 2833,181                   | 2579,729                    | 1,098                       |
| DEC 2006 | 3516,000        | 2860,1667             | 122,9   | 199,9               | 1758,860                   | 2553,575                    | ,689                        |
| JAN 2007 | 2208,000        | 2923,4167             | 75,5  | 75,5                | 2925,640                   | 2846,215                    | 1,028                       |
| FEB 2007 | 2511,000        | 2976,9167             | 84,3  | 74,7                | 3361,208                   | 3147,780                    | 1,068                       |
| MAR 2007 | 3322,000        | 3040,5000             | 109,3   | 88,2                | 3765,697                   | 3449,456                    | 1,092                       |
| APR 2007 | 2394,000        | 3102,5000             | 77,2  | 77,1                | 3104,859                   | 3469,139                    | ,895                        |
| MAY 2007 | 5498,000        | 3162,1667             | 173,9   | 141,3               | 3890,234                   | 3545,236                    | 1,097                       |
| JUN 2007 | 3352,000        | 3206,8333             | 104,5   | 103,6               | 3234,598                   | 3536,790                    | ,915                        |
| JUL 2007 | 3042,000        | 3528,4167             | 86,2  | 80,2                | 3791,814                   | 3603,344                    | 1,052                       |
| AUG 2007 | 2989,000        | 3655,5833             | 81,8  | 81,7                | 3658,363                   | 3574,219                    | 1,024                       |
| SEP 2007 | 3319,000        | 3673,8333             | 90,3  | 98,2                | 3378,495                   | 3546,128                    | ,953                        |
| OCT 2007 | 3275,000        | 3614,9167             | 90,6  | 90,5                | 3617,665                   | 3536,582                    | 1,023                       |
| NOV 2007 | 3056,000        | 3684,6667             | 82,9  | 88,9                | 3435,795                   | 3694,159                    | ,930                        |
| DEC 2007 | 7375,000        | 3686,5000             | 200,1   | 199,9               | 3689,303                   | 3900,751                    | ,946                        |
| JAN 2008 | 3734,000        | 3661,4167             | 102,0   | 75,5                | 4947,617                   | 3992,249                    | 1,239                       |
| FEB 2008 | 2730,000        | 3651,5833             | 74,8  | 74,7                | 3654,360                   | 3851,838                    | ,949                        |
| MAR 2008 | 2615,000        | 3617,1667             | 72,3  | 88,2                | 2964,268                   | 3715,081                    | ,798                        |
| APR 2008 | 3231,000        | 3824,5000             | 84,5  | 77,1                | 4190,393                   | 3656,646                    | 1,146                       |
| MAY 2008 | 5520,000        | 3902,8333             | 141,4   | 141,3               | 3905,801                   | 3621,718                    | 1,078                       |
| JUN 2008 | 3051,000        | 3994,0833             | 76,4  | 103,6               | 2944,140                   | 3475,194                    | ,847                        |
| JUL 2008 | 2924,000        | 4606,4167             | 63,5  | 80,2                | 3644,728                   | 3660,568                    | ,996                        |
| AUG 2008 | 2576,000        | 4584,8333             | 56,2  | 81,7                | 3152,875                   | 4018,936                    | ,785                        |
| SEP 2008 | 5807,000        | 4561,5000             | 127,3   | 98,2                | 5911,094                   | 4629,186                    | 1,277                       |
| OCT 2008 | 4215,000        | 4728,5833             | 89,1  | 90,5                | 4656,018                   | 5071,331                    | ,918                        |
| NOV 2008 | 4151,000        | 4663,3333             | 89,0  | 88,9                | 4666,879                   | 5395,378                    | ,865                        |
| DEC 2008 | 14723,000       | 4601,5833             | 320,0   | 199,9               | 7365,100                   | 5397,056                    | 1,365                       |
| JAN 2009 | 3475,000        | 4805,0833             | 72,3  | 75,5                | 4604,437                   | 5000,729                    | ,921                        |
| FEB 2009 | 2450,000        | 4863,3333             | 50,4  | 74,7                | 3279,554                   | 4451,295                    | ,737                        |
| MAR 2009 | 4620,000        | 5233,0833             | 88,3  | 88,2                | 5237,062                   | 4067,334                    | 1,288                       |
| APR 2009 | 2448,000        | 5019,6667             | 48,8  | 77,1                | 3174,893                   | 3926,883                    | ,809                        |
| MAY 2009 | 4779,000        | 5380,7500             | 88,8  | 141,3               | 3381,490                   | 4094,285                    | ,826                        |
| JUN 2009 | 5493,000        | 5296,5833             | 103,7   | 103,6               | 5300,611                   | 4828,362                    | 1,098                       |
| JUL 2009 | 3623,000        | 4872,3333             | 74,4  | 80,2                | 4516,023                   | 5333,553                    | ,847                        |
| AUG 2009 | 7013,000        | .                     | .   | 81,7                | 8583,506                   | 6237,103                    | 1,376                       |
| SEP 2009 | 3246,000        | .                     | .   | 98,2                | 3304,186                   | 6001,302                    | ,551                        |
| OCT 2009 | 8548,000        | .                     | .   | 90,5                | 9442,383                   | 6155,566                    | 1,534                       |
| NOV 2009 | 3141,000        | .                     | .   | 88,9                | 3531,358                   | 5930,699                    | ,595                        |
| DEC 2009 | 9632,000        | .                     | .   | 199,9               | 4818,355                   | 5818,265                    | ,828                        |

### Model Summary

| Model | R                 | R Square | Adjusted R Square | Std. Error of the Estimate |
|-------|-------------------|----------|-------------------|----------------------------|
| 1     | .612 <sup>a</sup> | .375     | .361              | 1184,00694085              |

a. Predictors: (Constant), urut\_bulan

### ANOVA<sup>b</sup>

| Model |            | Sum of Squares | df | Mean Square | F      | Sig.              |
|-------|------------|----------------|----|-------------|--------|-------------------|
| 1     | Regression | 3,868E+07      | 1  | 3,868E+07   | 27,594 | .000 <sup>a</sup> |
|       | Residual   | 6,449E+07      | 46 | 1,402E+06   |        |                   |
|       | Total      | 1,032E+08      | 47 |             |        |                   |

a. Predictors: (Constant), urut\_bulan

b. Dependent Variable: Seasonal adjusted series for PAD from SEASON, MOD\_7, MUL EQU 12

### Coefficients<sup>a</sup>

| Model |            | Unstandardized Coefficients |            | Standardized Coefficients | t     | Sig. | Correlations |         |      |
|-------|------------|-----------------------------|------------|---------------------------|-------|------|--------------|---------|------|
|       |            | B                           | Std. Error | Beta                      |       |      | Zero-order   | Partial | Part |
| 1     | (Constant) | 2271,657                    | 347,205    |                           | 6,543 | ,000 |              |         |      |
|       | urut_bulan | 64,801                      | 12,336     | ,612                      | 5,253 | ,000 | ,612         | ,612    | ,612 |

a. Dependent Variable: Seasonal adjusted series for PAD from SEASON, MOD\_7, MUL EQU 12

### Model Description

| Model ID   | Model Type              |
|--|-------------------------|
| Pendapatan Asli Daerah Kab.Pekalongan (dlm Juta) Model_1 | Winters' Multiplicative |

## Model Summary

### Model Fit

| Fit Statistic        | Mean     | SE | Min      | Max      |
|----------------------|----------|----|----------|----------|
| Stationary R-squared | ,641     | .  | ,641     | ,641     |
| R-squared            | ,513     | .  | ,513     | ,513     |
| RMSE                 | 1653,012 | .  | 1653,012 | 1653,012 |
| MAPE                 | 24,671   | .  | 24,671   | 24,671   |
| MaxAPE               | 77,005   | .  | 77,005   | 77,005   |
| MAE                  | 1036,626 | .  | 1036,626 | 1036,626 |

**Model Statistics**

| Model  | Number of Predictors | Model Fit statistics |          |        |          |        |          | Ljung-Box Q(18) |    |      |
|--|----------------------|----------------------|----------|--------|----------|--------|----------|-----------------|----|------|
|  |                      | Stationary R-squared | RMSE     | MAPE   | MAE      | MaxAPE | MaxAE    | Statistics      | DF | Sig. |
| Pendapatan Asli Daerah Kab.Pekalongan (dlm Juta)-Model_1 | 0                    | ,641                 | 1653,012 | 24,671 | 1036,626 | 77,005 | 6900,907 | 15,807          | 15 | ,395 |

**Lampiran 6.Hasil Pengolahan Data Dana Perimbangan dengan SPSS**

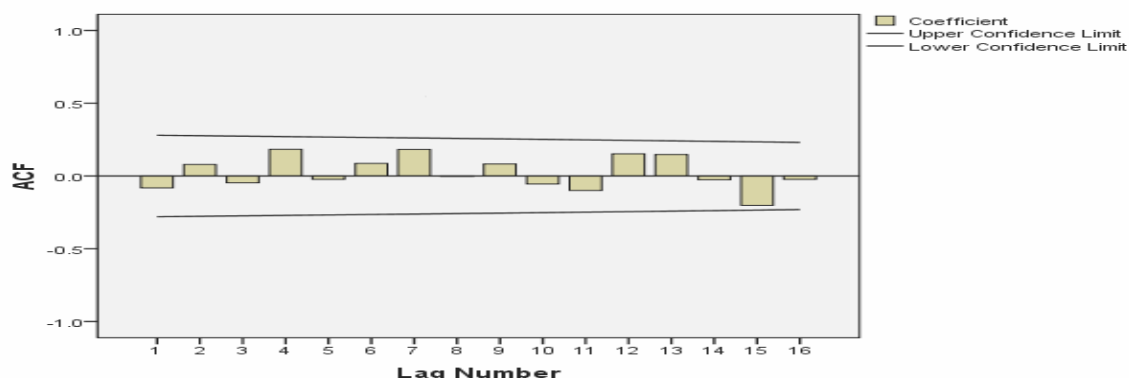
**Autocorrelations**

Series:Dana Perimbangan Kab.Pekalongan (dlm Juta)

| Lag | Autocorrelation | Std. Error <sup>a</sup> | Box-Ljung Statistic |    |                   |
|-----|-----------------|-------------------------|---------------------|----|-------------------|
|     |                 |                         | Value               | df | Sig. <sup>b</sup> |
| 1   | -,082           | ,140                    | ,341                | 1  | ,559              |
| 2   | ,079            | ,138                    | ,671                | 2  | ,715              |
| 3   | -,046           | ,137                    | ,786                | 3  | ,853              |
| 4   | ,183            | ,135                    | 2,612               | 4  | ,625              |
| 5   | -,023           | ,134                    | 2,641               | 5  | ,755              |
| 6   | ,087            | ,132                    | 3,072               | 6  | ,800              |
| 7   | ,183            | ,131                    | 5,024               | 7  | ,657              |
| 8   | -,003           | ,129                    | 5,025               | 8  | ,755              |
| 9   | ,082            | ,127                    | 5,443               | 9  | ,794              |
| 10  | -,055           | ,126                    | 5,634               | 10 | ,845              |
| 11  | -,099           | ,124                    | 6,272               | 11 | ,855              |
| 12  | ,152            | ,122                    | 7,813               | 12 | ,800              |
| 13  | ,147            | ,121                    | 9,304               | 13 | ,750              |
| 14  | -,026           | ,119                    | 9,351               | 14 | ,808              |
| 15  | -,202           | ,117                    | 12,322              | 15 | ,655              |
| 16  | -,023           | ,115                    | 12,361              | 16 | ,719              |

- a. The underlying process assumed is independence (white noise).
- b. Based on the asymptotic chi-square approximation.

**Dana Perimbangan Kab.Pekalongan (dlm Juta)**



## Seasonal Decomposition

Series Name: Dana Perimbangan Kab. Pekalongan (dlm Juta)

| Case Number | Original Series | Moving Average Series | Ratio of Original Series to Moving Average Series (%) | Seasonal Factor (%) | Seasonally Adjusted Series | Smoothed Trend-Cycle Series | Irregular (Error) Component |
|-------------|-----------------|-----------------------|---|---------------------|----------------------------|-----------------------------|-----------------------------|
| 1           | 63108,000       | .                     | .   | 162,9               | 38751,270                  | 35277,285                   | 1,098                       |
| 2           | 31531,000       | .                     | .   | 92,5                | 34088,999                  | 35027,472                   | ,973                        |
| 3           | 31501,000       | .                     | .   | 97,7                | 32242,148                  | 34527,847                   | ,934                        |
| 4           | 31582,000       | .                     | .   | 89,9                | 35145,652                  | 34966,442                   | 1,005                       |
| 5           | 34156,000       | .                     | .   | 92,8                | 36803,607                  | 35759,795                   | 1,029                       |
| 6           | 32711,000       | .                     | .   | 88,2                | 37080,509                  | 36072,168                   | 1,028                       |
| 7           | 32303,000       | 35583,0000            | 90,8  | 93,0                | 34732,860                  | 35662,013                   | ,974                        |
| 8           | 34065,000       | 36047,3333            | 94,5  | 96,8                | 35189,398                  | 35399,774                   | ,994                        |
| 9           | 42816,000       | 36279,5833            | 118,0   | 120,9               | 35416,120                  | 35393,469                   | 1,001                       |
| 10          | 35244,000       | 36520,5000            | 96,5  | 98,9                | 35651,303                  | 35306,628                   | 1,010                       |
| 11          | 37586,000       | 36753,3333            | 102,3   | 104,8               | 35878,595                  | 35842,343                   | 1,001                       |
| 12          | 20393,000       | 36917,7500            | 55,2  | 61,7                | 33026,919                  | 36437,425                   | ,906                        |
| 13          | 68680,000       | 37071,4167            | 185,3   | 162,9               | 42172,740                  | 37539,557                   | 1,123                       |
| 14          | 34318,000       | 38006,6667            | 90,3  | 92,5                | 37102,099                  | 37481,772                   | ,990                        |
| 15          | 34392,000       | 39367,5833            | 87,4  | 97,7                | 35201,166                  | 37491,092                   | ,939                        |
| 16          | 34376,000       | 39517,7500            | 87,0  | 89,9                | 38254,922                  | 37699,902                   | 1,015                       |
| 17          | 36129,000       | 39878,6667            | 90,6  | 92,8                | 38929,544                  | 39293,485                   | ,991                        |
| 18          | 34555,000       | 40125,8333            | 86,1  | 88,2                | 39170,829                  | 42142,896                   | ,929                        |
| 19          | 43526,000       | 40513,5000            | 107,4   | 93,0                | 46800,064                  | 44299,662                   | 1,056                       |
| 20          | 50396,000       | 38257,8333            | 131,7   | 96,8                | 52059,442                  | 44755,000                   | 1,163                       |
| 21          | 44618,000       | 40115,2500            | 111,2   | 120,9               | 36906,681                  | 42268,173                   | ,873                        |
| 22          | 39575,000       | 40527,2500            | 97,7  | 98,9                | 40032,355                  | 40438,947                   | ,990                        |
| 23          | 40552,000       | 41018,2500            | 98,9  | 104,8               | 38709,860                  | 37752,729                   | 1,025                       |
| 24          | 25045,000       | 41549,8333            | 60,3  | 61,7                | 40560,937                  | 39048,628                   | 1,039                       |
| 25          | 41612,000       | 42207,8333            | 98,6  | 162,9               | 25551,719                  | 39905,226                   | ,640                        |
| 26          | 56607,000       | 41914,4167            | 135,1   | 92,5                | 61199,327                  | 44510,788                   | 1,375                       |
| 27          | 39336,000       | 41243,0833            | 95,4  | 97,7                | 40261,488                  | 44906,820                   | ,897                        |
| 28          | 40268,000       | 44179,3333            | 91,1  | 89,9                | 44811,764                  | 46209,466                   | ,970                        |
| 29          | 42508,000       | 44470,6667            | 95,6  | 92,8                | 45803,014                  | 45172,379                   | 1,014                       |
| 30          | 42451,000       | 46284,5833            | 91,7  | 88,2                | 48121,570                  | 45616,495                   | 1,055                       |
| 31          | 40005,000       | 46922,4167            | 85,3  | 93,0                | 43014,212                  | 47179,542                   | ,912                        |
| 32          | 42340,000       | 50081,7500            | 84,5  | 96,8                | 43737,534                  | 49003,933                   | ,893                        |
| 33          | 79853,000       | 48673,0833            | 164,1   | 120,9               | 66052,024                  | 52807,880                   | 1,251                       |
| 34          | 43071,000       | 50280,6667            | 85,7  | 98,9                | 43568,757                  | 53164,526                   | ,820                        |
| 35          | 62319,000       | 50384,0833            | 123,7   | 104,8               | 59488,058                  | 54044,300                   | 1,101                       |
| 36          | 32699,000       | 50162,9167            | 65,2  | 61,7                | 52956,761                  | 51333,561                   | 1,032                       |
| 37          | 79524,000       | 50022,0000            | 159,0   | 162,9               | 48831,464                  | 50861,140                   | ,960                        |
| 38          | 39703,000       | 50267,5833            | 79,0  | 92,5                | 42923,965                  | 49510,789                   | ,867                        |
| 39          | 58627,000       | 50555,5833            | 116,0   | 97,7                | 60006,362                  | 50003,040                   | 1,200                       |
| 40          | 41509,000       | 47319,0000            | 87,7  | 89,9                | 46192,796                  | 48178,482                   | ,959                        |
| 41          | 39854,000       | 51053,4167            | 78,1  | 92,8                | 42943,288                  | 46646,009                   | ,921                        |
| 42          | 40760,000       | 49230,9167            | 82,8  | 88,2                | 46204,687                  | 45596,313                   | 1,013                       |
| 43          | 42952,000       | 47304,4167            | 90,8  | 93,0                | 46182,888                  | 44715,789                   | 1,033                       |
| 44          | 45796,000       | .                     | .   | 96,8                | 47307,608                  | 48582,672                   | ,974                        |
| 45          | 41014,000       | .                     | .   | 120,9               | 33925,560                  | 50998,401                   | ,665                        |
| 46          | 87884,000       | .                     | .   | 98,9                | 88899,646                  | 52733,043                   | 1,686                       |
| 47          | 40449,000       | .                     | .   | 104,8               | 38611,538                  | 47675,943                   | ,810                        |
| 48          | 9581,000        | .                     | .   | 61,7                | 15516,644                  | 45147,393                   | ,344                        |

**Model Summary<sup>b</sup>**

| Model | R                 | R Square | Adjusted R Square | Std. Error of the Estimate |
|-------|-------------------|----------|-------------------|----------------------------|
| 1     | ,409 <sup>a</sup> | ,167     | ,149              | 10391,62                   |

a. Predictors: (Constant), urut\_bulan

b. Dependent Variable: Seasonal adjusted series for Dana\_Perimbangan from SEASON, MOD\_3, MUL EQU 12

**ANOVA<sup>b</sup>**

| Model |            | Sum of Squares | df | Mean Square | F     | Sig.              |
|-------|------------|----------------|----|-------------|-------|-------------------|
| 1     | Regression | 9,987E+08      | 1  | 9,987E+08   | 9,248 | ,004 <sup>a</sup> |
|       | Residual   | 4,967E+09      | 46 | 1,080E+08   |       |                   |
|       | Total      | 5,966E+09      | 47 |             |       |                   |

a. Predictors: (Constant), urut\_bulan

b. Dependent Variable: Seasonal adjusted series for Dana\_Perimbangan from SEASON, MOD\_3, MUL EQU 12

**Coefficients<sup>a</sup>**

| Model |            | Unstandardized Coefficients |            | Standardized Coefficients |        | Correlations |            |         |      |
|-------|------------|-----------------------------|------------|---------------------------|--------|--------------|------------|---------|------|
|       |            | B                           | Std. Error | Beta                      | t      | Sig.         | Zero-order | Partial | Part |
| 1     | (Constant) | 34475,330                   | 3047,298   |                           | 11,313 | ,000         |            |         |      |
|       | urut_bulan | 329,256                     | 108,270    | ,409                      | 3,041  | ,004         | ,409       | ,409    | ,409 |

**Model Description**

| Model ID                                   | Model Type                      |
|--|---------------------------------|
| Dana Perimbangan Kab.Pekalongan (dlm Juta) | Model_1 Winters' Multiplicative |

**Model Summary****Model Fit**

| Fit Statistic        | Mean      | SE | Min       | Max       |
|----------------------|-----------|----|-----------|-----------|
| Stationary R-squared | ,787      | .  | ,787      | ,787      |
| R-squared            | ,402      | .  | ,402      | ,402      |
| RMSE                 | 11519,523 | .  | 11519,523 | 11519,523 |
| MAPE                 | 18,251    | .  | 18,251    | 18,251    |
| MaxAPE               | 226,770   | .  | 226,770   | 226,770   |
| MAE                  | 7180,919  | .  | 7180,919  | 7180,919  |
| MaxAE                | 39746,079 | .  | 39746,079 | 39746,079 |
| Normalized BIC       | 18,946    | .  | 18,946    | 18,946    |



**Model Statistics**

| Model   | Number of Predictors | Model Fit statistics |           |           |        |          |         | Ljung-Box Q(18) |    |      |
|---|----------------------|----------------------|-----------|-----------|--------|----------|---------|-----------------|----|------|
|   |                      | Stationary R-squared | R-squared | RMSE      | MAPE   | MAE      | MaxAPE  | Statistics      | DF | Sig. |
| Dana Perimbangan Kab.Pekalongan (dlm Juta(- Model_1 | 0                    | ,787                 | ,402      | 11519,523 | 18,251 | 7180,919 | 226,770 | 33,836          | 15 | ,004 |

**Lampiran 7. Hasil Pengolahan Data Lain-lain Pendapatan Yang Sah dengan Program Software SPSS**

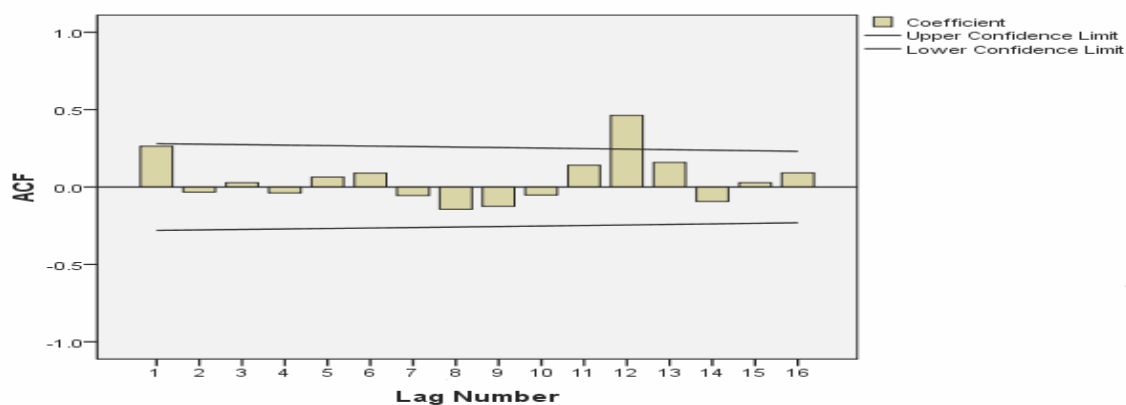
**Autocorrelations**

Series: Lain-lain Pendapatan Daerah yang Sah Kab.Pekalongan (dlm Juta)

| Lag | Autocorrelation | Std. Error <sup>a</sup> | Box-Ljung Statistic |    |                   |
|-----|-----------------|-------------------------|---------------------|----|-------------------|
|     |                 |                         | Value               | df | Sig. <sup>b</sup> |
| 1   | ,264            | ,140                    | 3,548               | 1  | ,060              |
| 2   | -,033           | ,138                    | 3,604               | 2  | ,165              |
| 3   | ,028            | ,137                    | 3,645               | 3  | ,302              |
| 4   | -,038           | ,135                    | 3,723               | 4  | ,445              |
| 5   | ,065            | ,134                    | 3,957               | 5  | ,556              |
| 6   | ,089            | ,132                    | 4,414               | 6  | ,621              |
| 7   | -,055           | ,131                    | 4,591               | 7  | ,710              |
| 8   | -,143           | ,129                    | 5,823               | 8  | ,667              |
| 9   | -,125           | ,127                    | 6,782               | 9  | ,660              |
| 10  | -,052           | ,126                    | 6,950               | 10 | ,730              |
| 11  | ,141            | ,124                    | 8,236               | 11 | ,692              |
| 12  | ,462            | ,122                    | 22,494              | 12 | ,032              |
| 13  | ,159            | ,121                    | 24,232              | 13 | ,029              |
| 14  | -,093           | ,119                    | 24,842              | 14 | ,036              |
| 15  | ,028            | ,117                    | 24,898              | 15 | ,051              |
| 16  | ,092            | ,115                    | 25,530              | 16 | ,061              |

- a. The underlying process assumed is independence (white noise).
- b. Based on the asymptotic chi-square approximation.

**Lain-lain Pendapatan Daerah yang Sah Kab.Pekalongan (dlm Juta)**



**Seasonal Decomposition**

Series Name:Lain-lain Pendapatan Daerah yang Sah Kab.Pekalongan (dlm Juta)

| Case Number | Original Series | Moving Average Series | Ratio of Original Series to Moving Average Series (%) | Seasonal Factor (%) | Seasonally Adjusted Series | Smoothed Trend-Cycle Series | Irregular (Error) Component |
|-------------|-----------------|-----------------------|---|---------------------|----------------------------|-----------------------------|-----------------------------|
| 1           | ,000            | .                     | .   | ,0                  | ,000                       | 693,707                     | ,000                        |
| 2           | ,000            | .                     | .   | ,1                  | ,000                       | 799,012                     | ,000                        |
| 3           | 258,000         | .                     | .   | 10,8                | 2397,036                   | 1009,621                    | 2,374                       |
| 4           | ,000            | .                     | .   | 8,9                 | ,000                       | 953,893                     | ,000                        |
| 5           | 3003,000        | .                     | .   | 158,4               | 1895,484                   | 1006,282                    | 1,884                       |
| 6           | ,000            | .                     | .   | 44,9                | ,000                       | 777,210                     | ,000                        |
| 7           | 100,000         | 1459,6667             | 6,9   | 10,3                | 973,048                    | 814,476                     | 1,195                       |
| 8           | 3446,000        | 1459,6667             | 236,1   | 274,0               | 1257,830                   | 962,681                     | 1,307                       |
| 9           | ,000            | 1459,6667             | ,0  | ,0                  | ,000                       | 1218,283                    | ,000                        |
| 10          | 2000,000        | 1438,1667             | 139,1   | 67,9                | 2944,540                   | 1616,532                    | 1,822                       |
| 11          | 3605,000        | 1452,3333             | 248,2   | 227,2               | 1586,758                   | 1468,556                    | 1,080                       |
| 12          | 5104,000        | 1489,8333             | 342,6   | 397,6               | 1283,826                   | 1107,726                    | 1,159                       |
| 13          | ,000            | 1562,0833             | ,0  | ,0                  | ,000                       | 461,601                     | ,000                        |
| 14          | ,000            | 1553,7500             | ,0  | ,1                  | ,000                       | 354,017                     | ,000                        |
| 15          | ,000            | 2207,5833             | ,0  | 10,8                | ,000                       | 664,909                     | ,000                        |
| 16          | 170,000         | 2207,5833             | 7,7   | 8,9                 | 1902,329                   | 1333,225                    | 1,427                       |
| 17          | 3453,000        | 2103,4167             | 164,2   | 158,4               | 2179,522                   | 1578,801                    | 1,380                       |
| 18          | 867,000         | 2243,1667             | 38,7  | 44,9                | 1932,992                   | 1798,007                    | 1,075                       |
| 19          | ,000            | 2364,8333             | ,0  | 10,3                | ,000                       | 1587,659                    | ,000                        |
| 20          | 11292,000       | 2690,8333             | 419,6   | 274,0               | 4121,713                   | 1711,370                    | 2,408                       |
| 21          | ,000            | 2714,7500             | ,0  | ,0                  | ,000                       | 1419,636                    | ,000                        |
| 22          | 750,000         | 2739,0833             | 27,4  | 67,9                | 1104,203                   | 1526,131                    | ,724                        |
| 23          | 5282,000        | 2749,0833             | 192,1   | 227,2               | 2324,897                   | 1,395E+06                   | ,002                        |
| 24          | 6564,000        | 2867,7500             | 228,9   | 397,6               | 1651,064                   | 2,835E+06                   | ,001                        |
| 25          | 3912,000        | 3451,3333             | 113,3   | ,0                  | 1,254E+07                  | 4,274E+06                   | 2,935                       |
| 26          | 287,000         | 3867,1667             | 7,4   | ,1                  | 413180,787                 | 2,927E+06                   | ,141                        |
| 27          | 292,000         | 3148,2500             | 9,3   | 10,8                | 2712,924                   | 1,488E+06                   | ,002                        |
| 28          | 290,000         | 3487,3333             | 8,3   | 8,9                 | 3245,149                   | 50227,231                   | ,065                        |
| 29          | 4877,000        | 3633,9167             | 134,2   | 158,4               | 3078,346                   | 11342,883                   | ,271                        |
| 30          | 7870,000        | 3889,2500             | 202,4   | 44,9                | 17546,302                  | 17791,520                   | ,986                        |
| 31          | 4990,000        | 4629,0000             | 107,8   | 10,3                | 48555,087                  | 20642,414                   | 2,352                       |
| 32          | 2665,000        | 4303,0833             | 61,9  | 274,0               | 972,756                    | 13474,297                   | ,072                        |
| 33          | 4069,000        | 4279,3333             | 95,1  | ,0                  | ,000                       | 6840,220                    | ,000                        |
| 34          | 2509,000        | 4286,6667             | 58,5  | 67,9                | 3693,925                   | 2587,280                    | 1,428                       |
| 35          | 8346,000        | 4263,0000             | 195,8   | 227,2               | 3673,531                   | 3264,776                    | 1,125                       |
| 36          | 15441,000       | 4270,4167             | 361,6   | 397,6               | 3883,925                   | 3553,940                    | 1,093                       |
| 37          | 1,000           | 3721,2500             | ,0  | ,0                  | 3206,692                   | 3372,288                    | ,951                        |
| 38          | 2,000           | 3341,3333             | ,1  | ,1                  | 2879,309                   | 2895,935                    | ,994                        |
| 39          | 380,000         | 3526,1667             | 10,8  | 10,8                | 3530,518                   | 2536,185                    | 1,392                       |
| 40          | 6,000           | 3415,1667             | ,2  | 8,9                 | 67,141                     | 2140,510                    | ,031                        |
| 41          | 4966,000        | 3637,5000             | 136,5   | 158,4               | 3134,523                   | 2552,196                    | 1,228                       |
| 42          | 1280,000        | 3763,3333             | 34,0  | 44,9                | 2853,782                   | 2785,284                    | 1,025                       |
| 43          | 431,000         | 3968,3333             | 10,9  | 10,3                | 4193,836                   | 2776,478                    | 1,510                       |
| 44          | 4883,000        | .                     | .   | 274,0               | 1782,352                   | 2690,050                    | ,663                        |
| 45          | 2737,000        | .                     | .   | ,0                  | ,000                       | 3037,843                    | ,000                        |
| 46          | 5177,000        | .                     | .   | 67,9                | 7621,942                   | 4203,023                    | 1,813                       |
| 47          | 9856,000        | .                     | .   | 227,2               | 4338,165                   | 5487,601                    | ,791                        |
| 48          | 17901,000       | .                     | .   | 397,6               | 4502,697                   | 6129,891                    | ,735                        |

**Model Description**

|          |   |         | Model Type |
|----------|---|---------|------------|
| Model ID | Lain-lain<br>Pendapatan<br>Daerah<br>yang Sah | Model_1 | Holt       |

**Model Summary****Model Fit**

| Fit Statistic        | Mean       | SE | Minimum    | Maximum    |
|----------------------|------------|----|------------|------------|
| Stationary R-squared | ,843       | .  | ,843       | ,843       |
| R-squared            | -,086      | .  | -,086      | -,086      |
| RMSE                 | 104484,170 | .  | 104484,170 | 104484,170 |
| MAPE                 | 296,038    | .  | 296,038    | 296,038    |
| MaxAPE               | 1824,052   | .  | 1824,052   | 1824,052   |
| MAE                  | 49617,010  | .  | 49617,010  | 49617,010  |
| MaxAE                | 265118,667 | .  | 265118,667 | 265118,667 |
| Normalized BIC       | 23,602     | .  | 23,602     | 23,602     |

**Forecast**

| Model   |          | 2010       | 2011       |
|---|----------|------------|------------|
| Lain-lain<br>Pendapatan<br>Daerah<br>yang Sah-<br>Model_1 | Forecast | 77429,36   | 82808,08   |
|   | UCL      | 324495,16  | 331099,38  |
|   | LCL      | -169636,45 | -165483,21 |

**Model Description**

|          |   |         | Model Type |
|----------|---|---------|------------|
| Model ID | Lain-lain<br>Pendapatan<br>Daerah<br>yang Sah | Model_1 | Brown      |

**Model Fit**

| Fit Statistic        | Mean       | SE | Minimum    | Maximum    |
|----------------------|------------|----|------------|------------|
| Stationary R-squared | ,844       | .  | ,844       | ,844       |
| R-squared            | -,207      | .  | -,207      | -,207      |
| RMSE                 | 103043,744 | .  | 103043,744 | 103043,744 |
| MAPE                 | 827,152    | .  | 827,152    | 827,152    |
| MaxAPE               | 5337,057   | .  | 5337,057   | 5337,057   |
| MAE                  | 71205,046  | .  | 71205,046  | 71205,046  |
| MaxAE                | 249837,102 | .  | 249837,102 | 249837,102 |
| Normalized BIC       | 23,330     | .  | 23,330     | 23,330     |

### Lampiran 8. Hasil Pengolahan Data Belanja Tidak Langsung dengan Program Software SPSS

#### Autocorrelations

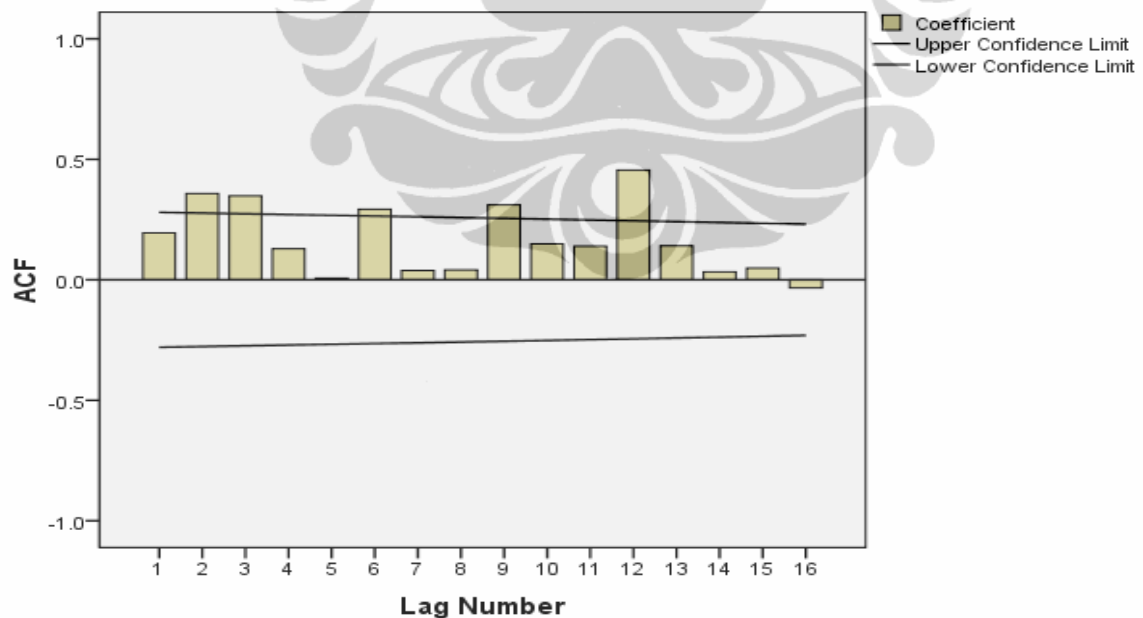
Series: Belanja Tidak Langsung Kab. Pekalongan (dlm juta)

| Lag | Autocorrelation | Std. Error <sup>a</sup> | Box-Ljung Statistic |    |                   |
|-----|-----------------|-------------------------|---------------------|----|-------------------|
|     |                 |                         | Value               | df | Sig. <sup>b</sup> |
| 1   | ,195            | ,140                    | 1,938               | 1  | ,164              |
| 2   | ,358            | ,138                    | 8,634               | 2  | ,013              |
| 3   | ,348            | ,137                    | 15,099              | 3  | ,002              |
| 4   | ,129            | ,135                    | 16,008              | 4  | ,003              |
| 5   | ,007            | ,134                    | 16,011              | 5  | ,007              |
| 6   | ,293            | ,132                    | 20,925              | 6  | ,002              |
| 7   | ,039            | ,131                    | 21,013              | 7  | ,004              |
| 8   | ,041            | ,129                    | 21,114              | 8  | ,007              |
| 9   | ,311            | ,127                    | 27,057              | 9  | ,001              |
| 10  | ,149            | ,126                    | 28,459              | 10 | ,002              |
| 11  | ,139            | ,124                    | 29,716              | 11 | ,002              |
| 12  | ,455            | ,122                    | 43,528              | 12 | ,000              |
| 13  | ,141            | ,121                    | 44,889              | 13 | ,000              |
| 14  | ,033            | ,119                    | 44,964              | 14 | ,000              |
| 15  | ,049            | ,117                    | 45,135              | 15 | ,000              |
| 16  | -,034           | ,115                    | 45,222              | 16 | ,000              |

a. The underlying process assumed is independence (white noise).

b. Based on the asymptotic chi-square approximation.

#### Belanja Tidak Langsung Kab. Pekalongan (dlm juta)



### Seasonal Decomposition

Series Name: Belanja Tidak Langsung Kab. Pekalongan (dlm juta)

| DATE_    | Original Series | Moving Average Series | Ratio of Original Series to Moving Average Series (%) | Seasonal Factor (%) | Seasonally Adjusted Series | Smoothed Trend-Cycle Series | Irregular (Error) Component |
|----------|-----------------|-----------------------|---|---------------------|----------------------------|-----------------------------|-----------------------------|
| JAN 2006 | 14061,000       | .                     | .   | 58,3                | 24113,730                  | 26366,697                   | ,915                        |
| FEB 2006 | 15792,000       | .                     | .   | 65,0                | 24302,484                  | 25623,391                   | ,948                        |
| MAR 2006 | 22171,000       | .                     | .   | 77,9                | 28453,959                  | 24136,780                   | 1,179                       |
| APR 2006 | 18281,000       | .                     | .   | 102,4               | 17854,198                  | 22936,052                   | ,778                        |
| MAY 2006 | 19276,000       | .                     | .   | 82,2                | 23442,049                  | 22908,566                   | 1,023                       |
| JUN 2006 | 34499,000       | .                     | .   | 139,3               | 24767,369                  | 23246,971                   | 1,065                       |
| JUL 2006 | 20455,000       | 25092,8333            | 81,5  | 92,3                | 22153,856                  | 23992,315                   | ,923                        |
| AUG 2006 | 31030,000       | 25242,5833            | 122,9   | 119,9               | 25874,625                  | 24726,052                   | 1,046                       |
| SEP 2006 | 25346,000       | 25415,4167            | 99,7  | 102,4               | 24743,234                  | 25357,430                   | ,976                        |
| OCT 2006 | 32685,000       | 25705,4167            | 127,2   | 124,0               | 26349,047                  | 26502,110                   | ,994                        |
| NOV 2006 | 24718,000       | 25906,7500            | 95,4  | 90,3                | 27385,968                  | 27274,705                   | 1,004                       |
| DEC 2006 | 42800,000       | 26202,5000            | 163,3   | 145,9               | 29338,822                  | 27891,398                   | 1,052                       |
| JAN 2007 | 15858,000       | 26531,1667            | 59,8  | 58,3                | 27195,472                  | 28395,394                   | ,958                        |
| FEB 2007 | 17866,000       | 26822,5833            | 66,6  | 65,0                | 27494,186                  | 28029,600                   | ,981                        |
| MAR 2007 | 25651,000       | 27458,0000            | 93,4  | 77,9                | 32920,143                  | 27681,104                   | 1,189                       |
| APR 2007 | 20697,000       | 27994,4167            | 73,9  | 102,4               | 20213,793                  | 26343,427                   | ,767                        |
| MAY 2007 | 22825,000       | 28672,8333            | 79,6  | 82,2                | 27758,081                  | 26417,880                   | 1,051                       |
| JUN 2007 | 38443,000       | 29085,1667            | 132,2   | 139,3               | 27598,828                  | 26960,202                   | 1,024                       |
| JUL 2007 | 23952,000       | 29650,9167            | 80,8  | 92,3                | 25941,293                  | 28474,707                   | ,911                        |
| AUG 2007 | 38655,000       | 30001,3333            | 128,8   | 119,9               | 32232,794                  | 30127,336                   | 1,070                       |
| SEP 2007 | 31783,000       | 30269,2500            | 105,0   | 102,4               | 31027,152                  | 31353,358                   | ,990                        |
| OCT 2007 | 40826,000       | 30411,6667            | 134,2   | 124,0               | 32911,922                  | 32527,948                   | 1,012                       |
| NOV 2007 | 29666,000       | 32065,1667            | 92,5  | 90,3                | 32868,036                  | 33094,119                   | ,993                        |
| DEC 2007 | 49589,000       | 33162,2500            | 149,5   | 145,9               | 33992,589                  | 33542,346                   | 1,013                       |
| JAN 2008 | 20063,000       | 34411,1667            | 58,3  | 58,3                | 34406,783                  | 33785,620                   | 1,018                       |
| FEB 2008 | 21081,000       | 36332,8333            | 58,0  | 65,0                | 32441,785                  | 34438,995                   | ,942                        |
| MAR 2008 | 27360,000       | 35816,0833            | 76,4  | 77,9                | 35113,451                  | 36398,242                   | ,965                        |
| APR 2008 | 40539,000       | 38625,4167            | 105,0   | 102,4               | 39592,547                  | 38593,480                   | 1,026                       |
| MAY 2008 | 35990,000       | 37053,2500            | 97,1  | 82,2                | 43768,383                  | 41470,739                   | 1,055                       |
| JUN 2008 | 53430,000       | 37421,2500            | 142,8   | 139,3               | 38358,229                  | 41233,227                   | ,930                        |
| JUL 2008 | 47012,000       | 37887,5833            | 124,1   | 92,3                | 50916,503                  | 43477,318                   | 1,171                       |
| AUG 2008 | 32454,000       | 38252,1667            | 84,8  | 119,9               | 27062,039                  | 40772,810                   | ,664                        |
| SEP 2008 | 65495,000       | 38894,4167            | 168,4   | 102,4               | 63937,430                  | 41113,301                   | 1,555                       |
| OCT 2008 | 21960,000       | 39307,6667            | 55,9  | 124,0               | 17703,077                  | 35710,674                   | ,496                        |
| NOV 2008 | 34082,000       | 39698,7500            | 85,9  | 90,3                | 37760,683                  | 36688,045                   | 1,029                       |
| DEC 2008 | 55185,000       | 39533,1667            | 139,6   | 145,9               | 37828,572                  | 37203,511                   | 1,017                       |
| JAN 2009 | 24438,000       | 40054,0833            | 61,0  | 58,3                | 41909,633                  | 41025,426                   | 1,022                       |
| FEB 2009 | 28788,000       | 39663,8333            | 72,6  | 65,0                | 44302,173                  | 42409,540                   | 1,045                       |
| MAR 2009 | 32319,000       | 40464,5833            | 79,9  | 77,9                | 41477,764                  | 42739,019                   | ,970                        |
| APR 2009 | 45232,000       | 38594,3333            | 117,2   | 102,4               | 44175,980                  | 42815,049                   | 1,032                       |
| MAY 2009 | 34003,000       | 40341,8333            | 84,3  | 82,2                | 41351,940                  | 42824,661                   | ,966                        |
| JUN 2009 | 59681,000       | 40392,2500            | 147,8   | 139,3               | 42845,919                  | 42464,592                   | 1,009                       |
| JUL 2009 | 42329,000       | 39277,3333            | 107,8   | 92,3                | 45844,565                  | 41861,644                   | 1,095                       |
| AUG 2009 | 42063,000       | .                     | .   | 119,9               | 35074,584                  | 39824,798                   | ,881                        |
| SEP 2009 | 43052,000       | .                     | .   | 102,4               | 42028,159                  | 38858,369                   | 1,082                       |
| OCT 2009 | 42930,000       | .                     | .   | 124,0               | 34608,064                  | 36497,168                   | ,948                        |
| NOV 2009 | 34687,000       | .                     | .   | 90,3                | 38430,984                  | 33898,832                   | 1,134                       |
| DEC 2009 | 41806,000       | .                     | .   | 145,9               | 28657,448                  | 32599,664                   | ,879                        |

**Coefficients<sup>a</sup>**

| Model |            | Unstandardized Coefficients |            | Standardized Coefficients | t      | Sig. |
|-------|------------|-----------------------------|------------|---------------------------|--------|------|
|       |            | B                           | Std. Error | Beta                      |        |      |
| 1     | (Constant) | 22626,364                   | 2025,017   |                           | 11,173 | ,000 |
|       | bulan_t    | 428,967                     | 71,948     | ,660                      | 5,962  | ,000 |

a. Dependent Variable: Seasonal adjusted series for Belanja\_Taklangsung from SEASON, MOD\_8, MUL EQU 12

**Model Summary****Model Fit**

| Fit Statistic        | Mean      | SE | Minimum   | Maximum   |
|----------------------|-----------|----|-----------|-----------|
| Stationary R-squared | ,718      | .  | ,718      | ,718      |
| R-squared            | ,584      | .  | ,584      | ,584      |
| RMSE                 | 8037,796  | .  | 8037,796  | 8037,796  |
| MAPE                 | 12,290    | .  | 12,290    | 12,290    |
| MaxAPE               | 101,792   | .  | 101,792   | 101,792   |
| MAE                  | 4417,154  | .  | 4417,154  | 4417,154  |
| MaxAE                | 27595,399 | .  | 27595,399 | 27595,399 |
| Normalized BIC       | 18,226    | .  | 18,226    | 18,226    |

**Model Statistics**

| Model   | Number of Predictors | Model Fit statistics |          |        |          |         |           | Ljung-Box Q(18) |    |      |
|---|----------------------|----------------------|----------|--------|----------|---------|-----------|-----------------|----|------|
|   |                      | Stationary R-squared | RMSE     | MAPE   | MAE      | MaxAPE  | MaxAE     | Statistics      | DF | Sig. |
| Belanja Tidak Langsung Kab.Pekalongan (dln juta)- Model_1 | 0                    | ,718                 | 8037,796 | 12,290 | 4417,154 | 101,792 | 27595,399 | 26,011          | 15 | ,038 |

Lampiran 9. Hasil Pengolahan Data Belanja Langsung dengan Program Software SPSS

Autocorrelations

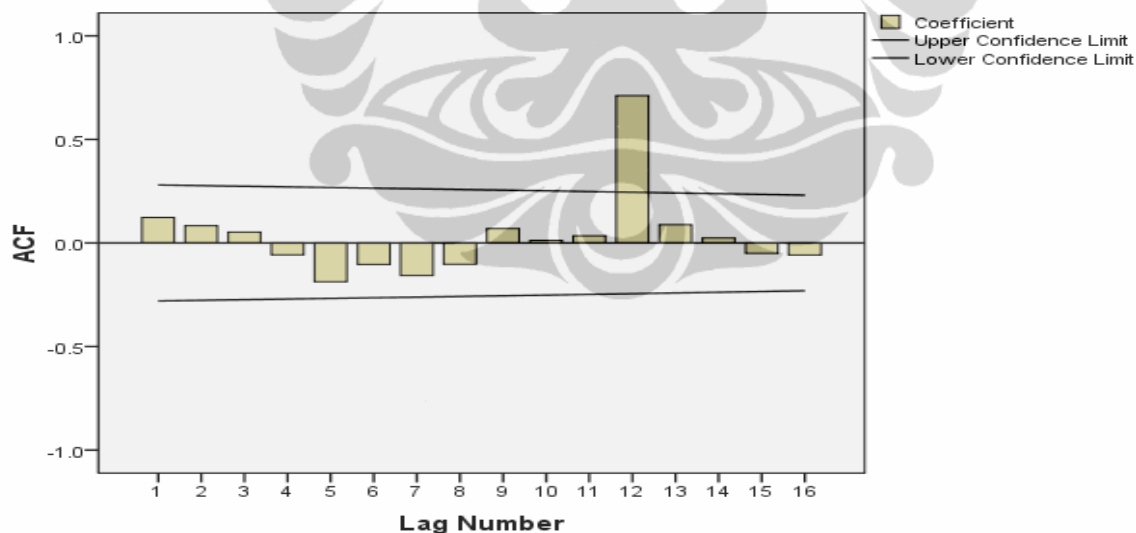
Series: Belanja Langsung Kab. Pekalongan (dlm Juta)

| Lag | Autocorrelation | Std. Error <sup>a</sup> | Box-Ljung Statistic |    |                   |
|-----|-----------------|-------------------------|---------------------|----|-------------------|
|     |                 |                         | Value               | df | Sig. <sup>b</sup> |
| 1   | ,123            | ,140                    | ,771                | 1  | ,380              |
| 2   | ,083            | ,138                    | 1,131               | 2  | ,568              |
| 3   | ,053            | ,137                    | 1,279               | 3  | ,734              |
| 4   | -,058           | ,135                    | 1,460               | 4  | ,834              |
| 5   | -,188           | ,134                    | 3,425               | 5  | ,635              |
| 6   | -,104           | ,132                    | 4,040               | 6  | ,671              |
| 7   | -,157           | ,131                    | 5,489               | 7  | ,601              |
| 8   | -,103           | ,129                    | 6,124               | 8  | ,633              |
| 9   | ,070            | ,127                    | 6,423               | 9  | ,697              |
| 10  | ,013            | ,126                    | 6,433               | 10 | ,778              |
| 11  | ,034            | ,124                    | 6,509               | 11 | ,837              |
| 12  | ,712            | ,122                    | 40,270              | 12 | ,000              |
| 13  | ,088            | ,121                    | 40,802              | 13 | ,000              |
| 14  | ,024            | ,119                    | 40,843              | 14 | ,000              |
| 15  | -,050           | ,117                    | 41,025              | 15 | ,000              |
| 16  | -,058           | ,115                    | 41,276              | 16 | ,001              |

a. The underlying process assumed is independence (white noise).

b. Based on the asymptotic chi-square approximation.

Belanja Langsung Kab. Pekalongan (dlm Juta)



## Seasonal Decomposition

Series Name: Belanja Langsung Kab. Pekalongan (dlm Juta)

| DATE_    | Original Series | Moving Average Series | Ratio of Original Series to Moving Average Series (%) | Seasonal Factor (%) | Seasonally Adjusted Series | Smoothed Trend-Cycle Series | Irregular (Error) Component |
|----------|-----------------|-----------------------|---|---------------------|----------------------------|-----------------------------|-----------------------------|
| JAN 2006 | 541,000         | .                     | .   | 4,6                 | 11764,416                  | 11521,915                   | 1,021                       |
| FEB 2006 | 1876,000        | .                     | .   | 20,0                | 9368,012                   | 11529,108                   | ,813                        |
| MAR 2006 | 4208,000        | .                     | .   | 31,3                | 13454,895                  | 11543,492                   | 1,166                       |
| APR 2006 | 4600,000        | .                     | .   | 42,4                | 10858,242                  | 11117,720                   | ,977                        |
| MAY 2006 | 5834,000        | .                     | .   | 51,6                | 11309,821                  | 10581,174                   | 1,069                       |
| JUN 2006 | 8066,000        | .                     | .   | 93,9                | 8587,305                   | 9986,277                    | ,860                        |
| JUL 2006 | 7804,000        | 12156,0000            | 64,2  | 87,1                | 8955,115                   | 10398,170                   | ,861                        |
| AUG 2006 | 15555,000       | 12171,0833            | 127,8   | 122,2               | 12726,460                  | 11460,156                   | 1,110                       |
| SEP 2006 | 12197,000       | 12223,0833            | 99,8  | 95,4                | 12780,833                  | 12381,277                   | 1,032                       |
| OCT 2006 | 18092,000       | 12339,7500            | 146,6   | 140,2               | 12902,823                  | 12883,611                   | 1,001                       |
| NOV 2006 | 15873,000       | 12467,2500            | 127,3   | 123,3               | 12875,316                  | 13258,151                   | ,971                        |
| DEC 2006 | 51226,000       | 12629,0000            | 405,6   | 387,9               | 13205,272                  | 13572,674                   | ,973                        |
| JAN 2007 | 722,000         | 12852,5833            | 5,6   | 4,6                 | 15700,385                  | 14365,155                   | 1,093                       |
| FEB 2007 | 2500,000        | 13068,9167            | 19,1  | 20,0                | 12484,024                  | 14710,063                   | ,849                        |
| MAR 2007 | 5608,000        | 13500,1667            | 41,5  | 31,3                | 17931,334                  | 15386,074                   | 1,165                       |
| APR 2007 | 6130,000        | 13838,3333            | 44,3  | 42,4                | 14469,788                  | 14816,119                   | ,977                        |
| MAY 2007 | 7775,000        | 14339,9167            | 54,2  | 51,6                | 15072,653                  | 14101,146                   | 1,069                       |
| JUN 2007 | 10749,000       | 14780,0000            | 72,7  | 93,9                | 11443,707                  | 13308,302                   | ,860                        |
| JUL 2007 | 10400,000       | 16200,2500            | 64,2  | 87,1                | 11934,034                  | 13857,345                   | ,861                        |
| AUG 2007 | 20730,000       | 16210,2500            | 127,9   | 122,2               | 16960,432                  | 15272,741                   | 1,111                       |
| SEP 2007 | 16255,000       | 16323,5833            | 99,6  | 95,4                | 17033,077                  | 16500,444                   | 1,032                       |
| OCT 2007 | 24111,000       | 16291,5000            | 148,0   | 140,2               | 17195,444                  | 17169,952                   | 1,001                       |
| NOV 2007 | 21154,000       | 16410,1667            | 128,9   | 123,3               | 17158,976                  | 17378,683                   | ,987                        |
| DEC 2007 | 68269,000       | 16610,8333            | 411,0   | 387,9               | 17598,694                  | 17800,505                   | ,989                        |
| JAN 2008 | 842,000         | 17510,8333            | 4,8   | 4,6                 | 18309,867                  | 18059,661                   | 1,014                       |
| FEB 2008 | 3860,000        | 18434,1667            | 20,9  | 20,0                | 19275,333                  | 18141,798                   | 1,062                       |
| MAR 2008 | 5223,000        | 18475,8333            | 28,3  | 31,3                | 16700,313                  | 18040,504                   | ,926                        |
| APR 2008 | 7554,000        | 19931,3333            | 37,9  | 42,4                | 17831,122                  | 18732,518                   | ,952                        |
| MAY 2008 | 10183,000       | 18879,3333            | 53,9  | 51,6                | 19740,813                  | 20235,199                   | ,976                        |
| JUN 2008 | 21549,000       | 19198,0833            | 112,2   | 93,9                | 22941,710                  | 21422,681                   | 1,071                       |
| JUL 2008 | 21480,000       | 18196,3333            | 118,0   | 87,1                | 24648,370                  | 23293,721                   | 1,058                       |
| AUG 2008 | 21230,000       | 18188,0000            | 116,7   | 122,2               | 17369,511                  | 22578,834                   | ,769                        |
| SEP 2008 | 33721,000       | 18289,0000            | 184,4   | 95,4                | 35335,121                  | 22448,769                   | 1,574                       |
| OCT 2008 | 11487,000       | 18356,8333            | 62,6  | 140,2               | 8192,280                   | 18626,631                   | ,440                        |
| NOV 2008 | 24979,000       | 18768,7500            | 133,1   | 123,3               | 20261,609                  | 17515,504                   | 1,157                       |
| DEC 2008 | 56248,000       | 18680,3333            | 301,1   | 387,9               | 14499,866                  | 16645,920                   | ,871                        |
| JAN 2009 | 742,000         | 18449,6667            | 4,0   | 4,6                 | 16135,299                  | 18625,051                   | ,866                        |
| FEB 2009 | 5072,000        | 18508,1667            | 27,4  | 20,0                | 25327,588                  | 21206,481                   | 1,194                       |
| MAR 2009 | 6037,000        | 18460,6667            | 32,7  | 31,3                | 19303,043                  | 22375,731                   | ,863                        |
| APR 2009 | 12497,000       | 18491,0833            | 67,6  | 42,4                | 29499,012                  | 23088,159                   | 1,278                       |
| MAY 2009 | 9122,000        | 19776,5000            | 46,1  | 51,6                | 17683,954                  | 21866,275                   | ,809                        |
| JUN 2009 | 18781,000       | 19122,2500            | 98,2  | 93,9                | 19994,814                  | 21406,929                   | ,934                        |
| JUL 2009 | 22182,000       | 17215,6667            | 128,8   | 87,1                | 25453,917                  | 22617,694                   | 1,125                       |
| AUG 2009 | 20660,000       | .                     | .   | 122,2               | 16903,161                  | 23582,264                   | ,717                        |
| SEP 2009 | 34086,000       | .                     | .   | 95,4                | 35717,592                  | 24299,159                   | 1,470                       |
| OCT 2009 | 26912,000       | .                     | .   | 140,2               | 19193,057                  | 20256,237                   | ,948                        |
| NOV 2009 | 17128,000       | .                     | .   | 123,3               | 13893,304                  | 13896,124                   | 1,000                       |
| DEC 2009 | 33369,000       | .                     | .   | 387,9               | 8602,013                   | 10716,068                   | ,803                        |



Coefficients<sup>a</sup>

| Model |            | Unstandardized Coefficients |            | Standardized Coefficients | t     | Sig. |
|-------|------------|-----------------------------|------------|---------------------------|-------|------|
|       |            | B                           | Std. Error | Beta                      |       |      |
| 1     | (Constant) | 10827,390                   | 1507,558   |                           | 7,182 | ,000 |
|       | bulan_t    | 243,936                     | 53,563     | ,557                      | 4,554 | ,000 |

## Model Description

|          |  |         | Model Type                 |
|----------|--|---------|----------------------------|
| Model ID | Belanja Langsung<br>Kab.Pekalongan (dlm<br>Juta) | Model_1 | Winters'<br>Multiplicative |

## Model Fit

| Fit Statistic        | Mean      | SE | Minimum   | Maximum   |
|----------------------|-----------|----|-----------|-----------|
| Stationary R-squared | ,370      | .  | ,370      | ,370      |
| R-squared            | ,773      | .  | ,773      | ,773      |
| RMSE                 | 7050,616  | .  | 7050,616  | 7050,616  |
| MAPE                 | 21,166    | .  | 21,166    | 21,166    |
| MaxAPE               | 113,396   | .  | 113,396   | 113,396   |
| MAE                  | 3831,432  | .  | 3831,432  | 3831,432  |
| MaxAE                | 28694,772 | .  | 28694,772 | 28694,772 |
| Normalized BIC       | 17,964    | .  | 17,964    | 17,964    |

## Model Statistics

| Model  | Number of Predictors | Model Fit statistics |          |        |          |         |           | Ljung-Box Q(18) |    |      |
|--|----------------------|----------------------|----------|--------|----------|---------|-----------|-----------------|----|------|
|  |                      | Stationary R-squared | RMSE     | MAPE   | MAE      | MaxAPE  | MaxAE     | Statistics      | DF | Sig. |
| Belanja Langsung<br>Kab.Pekalongan<br>(dlm Juta)-<br>Model_1 | 0                    | ,370                 | 7050,616 | 21,166 | 3831,432 | 113,396 | 28694,772 | 11,961          | 15 | ,682 |

## Forecast

| Model                                    |          | Jan 2010  | Feb 2010  | Mar 2010  | Apr 2010 | May 2010 | Jun 2010 | Jul 2010 | Aug 2010 | Sep 2010 | Oct 2010 | Nov 2010 | Dec 2010 |
|--|----------|-----------|-----------|-----------|----------|----------|----------|----------|----------|----------|----------|----------|----------|
| Belanja                                  | Forecast | 808,69    | 5081,46   | 6275,39   | 12165,40 | 9850,99  | 20145,14 | 22982,04 | 22106,42 | 35434,35 | 25796,39 | 19789,63 | 41080,04 |
| Langsung                                 | UCL      | 15009,36  | 19282,13  | 20476,06  | 26366,07 | 24051,67 | 34345,81 | 37182,71 | 36307,09 | 49635,03 | 39997,07 | 33990,30 | 55280,72 |
| Kab.Pekalongan<br>(dlm Juta)-<br>Model_1 | LCL      | -13391,98 | -9119,21  | -7925,28  | -2035,27 | -4349,68 | 5944,47  | 8781,36  | 7905,74  | 21233,67 | 11595,72 | 5588,95  | 26879,36 |
| Model                                    |          | Jan 2011  | Feb 2011  | Mar 2011  | Apr 2011 | May 2011 | Jun 2011 | Jul 2011 | Aug 2011 | Sep 2011 | Oct 2011 | Nov 2011 | Dec 2011 |
| Belanja                                  | Forecast | 850,31    | 5341,89   | 6595,64   | 12783,61 | 10349,49 | 21160,27 | 24135,28 | 23211,10 | 37197,70 | 27074,82 | 20766,33 | 43099,22 |
| Langsung                                 | UCL      | 19050,62  | 23542,20  | 24795,95  | 30983,92 | 28549,79 | 39360,58 | 42335,58 | 41411,41 | 55398,01 | 45275,13 | 38966,64 | 61299,54 |
| Kab.Pekalongan<br>(dlm Juta)-<br>Model_1 | LCL      | -17349,99 | -12858,41 | -11604,66 | -5416,69 | -7850,82 | 2959,96  | 5934,97  | 5010,79  | 18997,38 | 8874,51  | 2566,03  | 24898,90 |

Lampiran 10. Hasil Pengolahan Data Penerimaan Pembiayaan dengan Program Software SPSS

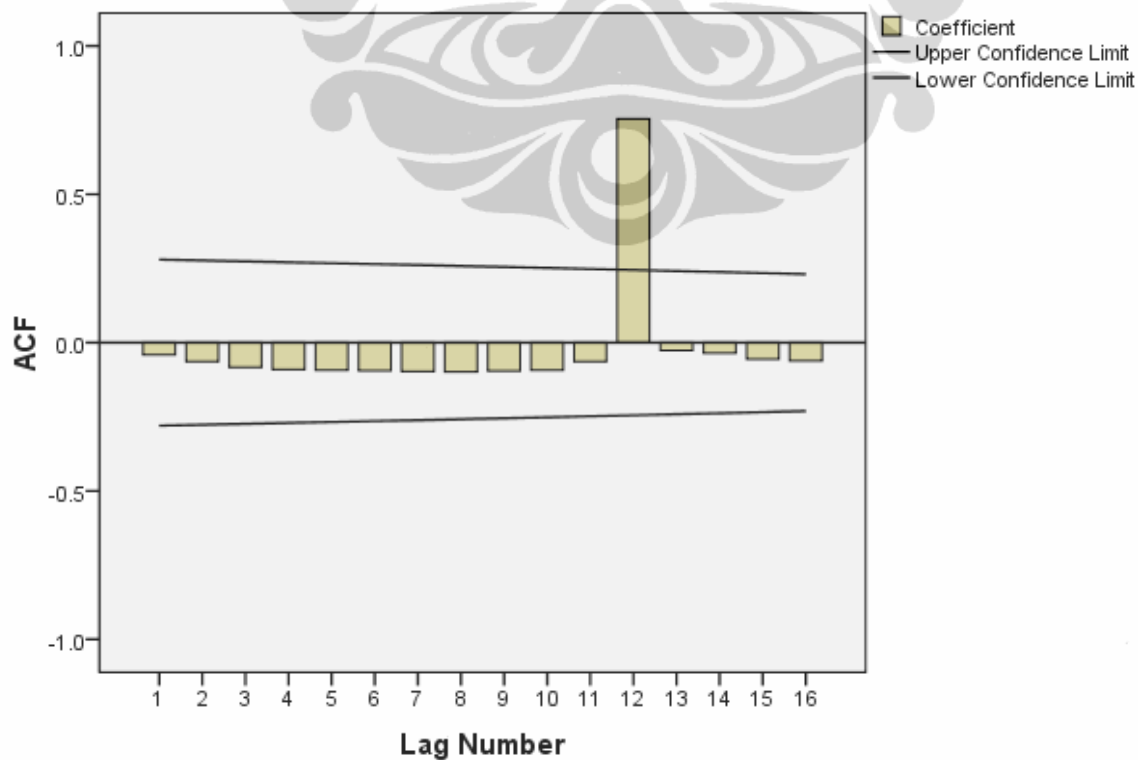
**Autocorrelations**

Series: Penerimaan Pembiayaan Kab. Pekalongan (dlm Juta)

| Lag | Autocorrelation | Std. Error <sup>a</sup> | Box-Ljung Statistic |    |                   |
|-----|-----------------|-------------------------|---------------------|----|-------------------|
|     |                 |                         | Value               | df | Sig. <sup>b</sup> |
| 1   | -,041           | ,140                    | ,087                | 1  | ,767              |
| 2   | -,064           | ,138                    | ,299                | 2  | ,861              |
| 3   | -,083           | ,137                    | ,668                | 3  | ,881              |
| 4   | -,091           | ,135                    | 1,119               | 4  | ,891              |
| 5   | -,093           | ,134                    | 1,601               | 5  | ,901              |
| 6   | -,095           | ,132                    | 2,117               | 6  | ,909              |
| 7   | -,097           | ,131                    | 2,667               | 7  | ,914              |
| 8   | -,099           | ,129                    | 3,250               | 8  | ,918              |
| 9   | -,096           | ,127                    | 3,812               | 9  | ,923              |
| 10  | -,093           | ,126                    | 4,359               | 10 | ,930              |
| 11  | -,064           | ,124                    | 4,621               | 11 | ,948              |
| 12  | ,754            | ,122                    | 42,537              | 12 | ,000              |
| 13  | -,026           | ,121                    | 42,584              | 13 | ,000              |
| 14  | -,036           | ,119                    | 42,674              | 14 | ,000              |
| 15  | -,056           | ,117                    | 42,902              | 15 | ,000              |
| 16  | -,061           | ,115                    | 43,183              | 16 | ,000              |

- a. The underlying process assumed is independence (white noise).
- b. Based on the asymptotic chi-square approximation.

**Penerimaan Pembiayaan Kab. Pekalongan (dlm Juta)**



## Seasonal Decomposition

Series Name: Penerimaan Pembiayaan Kab. Pekalongan (dlm Juta)

| DATE_    | Original Series | Moving Average Series | Ratio of Original Series to Moving Average Series (%) | Seasonal Factor (%) | Seasonally Adjusted Series | Smoothed Trend-Cycle Series | Irregular (Error) Component |
|----------|-----------------|-----------------------|---|---------------------|----------------------------|-----------------------------|-----------------------------|
| JAN 2006 | 30324,000       | .                     | .   | 1127,5              | 2689,438                   | 1195,306                    | 2,250                       |
| FEB 2006 | ,000            | .                     | .   | ,0                  | ,000                       | 896,479                     | ,000                        |
| MAR 2006 | ,000            | .                     | .   | 26,9                | ,000                       | 298,826                     | ,000                        |
| APR 2006 | ,000            | .                     | .   | ,0                  | ,000                       | ,000                        | .                           |
| MAY 2006 | ,000            | .                     | .   | ,0                  | ,000                       | ,000                        | .                           |
| JUN 2006 | ,000            | .                     | .   | ,0                  | ,000                       | ,000                        | .                           |
| JUL 2006 | ,000            | 2527,0000             | ,0  | ,0                  | ,000                       | ,000                        | .                           |
| AUG 2006 | ,000            | 4608,0833             | ,0  | ,0                  | ,000                       | ,000                        | .                           |
| SEP 2006 | ,000            | 4608,0833             | ,0  | ,0                  | ,000                       | ,000                        | .                           |
| OCT 2006 | ,000            | 4608,0833             | ,0  | ,0                  | ,000                       | ,000                        | .                           |
| NOV 2006 | ,000            | 4683,0833             | ,0  | ,0                  | ,000                       | 544,922                     | ,000                        |
| DEC 2006 | ,000            | 4683,0833             | ,0  | 45,6                | ,000                       | 1089,844                    | ,000                        |
| JAN 2007 | 55297,000       | 4683,0833             | 1180,8  | 1127,5              | 4904,296                   | 1634,765                    | 3,000                       |
| FEB 2007 | ,000            | 4683,0833             | ,0  | ,0                  | ,000                       | 1089,844                    | ,000                        |
| MAR 2007 | ,000            | 4683,0833             | ,0  | 26,9                | ,000                       | 544,922                     | ,000                        |
| APR 2007 | 900,000         | 4683,0833             | 19,2  | ,0                  | ,000                       | ,000                        | .                           |
| MAY 2007 | ,000            | 4683,0833             | ,0  | ,0                  | ,000                       | ,000                        | .                           |
| JUN 2007 | ,000            | 4683,0833             | ,0  | ,0                  | ,000                       | ,000                        | .                           |
| JUL 2007 | ,000            | 5099,7500             | ,0  | ,0                  | ,000                       | ,000                        | .                           |
| AUG 2007 | ,000            | 5610,0000             | ,0  | ,0                  | ,000                       | ,000                        | .                           |
| SEP 2007 | ,000            | 5610,0000             | ,0  | ,0                  | ,000                       | ,000                        | .                           |
| OCT 2007 | ,000            | 5735,0000             | ,0  | ,0                  | ,000                       | 1218,499                    | ,000                        |
| NOV 2007 | ,000            | 5660,0000             | ,0  | ,0                  | ,000                       | 3042,259                    | ,000                        |
| DEC 2007 | 5000,000        | 5660,0000             | 88,3  | 45,6                | 10966,493                  | 4866,019                    | 2,254                       |
| JAN 2008 | 61420,000       | 5660,0000             | 1085,2  | 1127,5              | 5447,345                   | 4872,708                    | 1,118                       |
| FEB 2008 | ,000            | 5660,0000             | ,0  | ,0                  | ,000                       | 3668,876                    | ,000                        |
| MAR 2008 | 1500,000        | 5660,0000             | 26,5  | 26,9                | 5579,349                   | 2465,044                    | 2,263                       |
| APR 2008 | ,000            | 5660,0000             | ,0  | ,0                  | ,000                       | 1239,855                    | ,000                        |
| MAY 2008 | ,000            | 5660,0000             | ,0  | ,0                  | ,000                       | 619,928                     | ,000                        |
| JUN 2008 | ,000            | 5660,0000             | ,0  | ,0                  | ,000                       | ,000                        | .                           |
| JUL 2008 | ,000            | 5458,0833             | ,0  | ,0                  | ,000                       | ,000                        | .                           |
| AUG 2008 | ,000            | 5650,5000             | ,0  | ,0                  | ,000                       | ,000                        | .                           |
| SEP 2008 | ,000            | 5650,5000             | ,0  | ,0                  | ,000                       | ,000                        | .                           |
| OCT 2008 | ,000            | 5733,8333             | ,0  | ,0                  | ,000                       | 628,015                     | ,000                        |
| NOV 2008 | ,000            | 5733,8333             | ,0  | ,0                  | ,000                       | 1884,044                    | ,000                        |
| DEC 2008 | 2577,000        | 5733,8333             | 44,9  | 45,6                | 5652,131                   | 3140,073                    | 1,800                       |
| JAN 2009 | 63729,000       | 5733,8333             | 1111,5  | 1127,5              | 5652,131                   | 4173,285                    | 1,354                       |
| FEB 2009 | ,000            | 5733,8333             | ,0  | ,0                  | ,000                       | 3950,469                    | ,000                        |
| MAR 2009 | 2500,000        | 5733,8333             | 43,6  | 26,9                | 9298,916                   | 3727,653                    | 2,495                       |
| APR 2009 | ,000            | 5733,8333             | ,0  | ,0                  | ,000                       | 2066,426                    | ,000                        |
| MAY 2009 | ,000            | 5733,8333             | ,0  | ,0                  | ,000                       | 1033,213                    | ,000                        |
| JUN 2009 | ,000            | 5733,8333             | ,0  | ,0                  | ,000                       | ,000                        | .                           |
| JUL 2009 | ,000            | 5519,0833             | ,0  | ,0                  | ,000                       | ,000                        | .                           |
| AUG 2009 | ,000            | .                     | .   | ,0                  | ,000                       | ,000                        | .                           |
| SEP 2009 | ,000            | .                     | .   | ,0                  | ,000                       | ,000                        | .                           |
| OCT 2009 | ,000            | .                     | .   | ,0                  | ,000                       | ,000                        | .                           |
| NOV 2009 | ,000            | .                     | .   | ,0                  | ,000                       | ,000                        | .                           |
| DEC 2009 | ,000            | .                     | .   | 45,6                | ,000                       | ,000                        | .                           |

**Model Description**

|               |  |         |            |
|---------------|--|---------|------------|
|               |  |         | Model Type |
| Model ID      | Penerimaan<br>Pembiayaan<br>Kab.Pekalongan<br>(dalam juta) | Model_1 | Holt       |
| Model Summary |  |         |            |

**Model Fit**

| Fit Statistic        | Mean      | SE | Minimum   | Maximum   |
|----------------------|-----------|----|-----------|-----------|
| Stationary R-squared | ,702      | .  | ,702      | ,702      |
| R-squared            | ,713      | .  | ,713      | ,713      |
| RMSE                 | 11278,769 | .  | 11278,769 | 11278,769 |
| MAPE                 | 23,264    | .  | 23,264    | 23,264    |
| MaxAPE               | 39,833    | .  | 39,833    | 39,833    |
| MAE                  | 8502,881  | .  | 8502,881  | 8502,881  |
| MaxAE                | 13488,546 | .  | 13488,546 | 13488,546 |
| Normalized BIC       | 19,217    | .  | 19,217    | 19,217    |

**Model Statistics**

| Model  | Number of Predictors | Model Fit statistics |           |           |        |          |        |           | Ljung-Box Q(18) |     |       |
|--|----------------------|----------------------|-----------|-----------|--------|----------|--------|-----------|-----------------|-----|-------|
|  |                      | Stationary R-squared | R-squared | RMSE      | MAPE   | MAE      | MaxAPE | MaxAE     | Statistics      | D F | Si g. |
| Penerimaan<br>Pembiayaan<br>Kab.Pekalongan<br>(dalam juta)-<br>Model_1 | 0                    | ,702                 | ,713      | 11278,769 | 23,264 | 8502,881 | 39,833 | 13488,546 | .               | 0   | .     |

**Forecast**

| Model  |          | 2010      | 2011      |
|--|----------|-----------|-----------|
| Penerimaan<br>Pembiayaan<br>Kab.Pekalongan<br>(dalam juta)-<br>Model_1 | Forecast | 74958,12  | 82740,38  |
|  | UCL      | 103951,12 | 112300,81 |
|  | LCL      | 45965,13  | 53179,95  |

**Model Description**

|          |  |         |            |
|----------|--|---------|------------|
|          |  |         | Model Type |
| Model ID | Penerimaan<br>Pembiayaan<br>Kab.Pekalongan<br>(dalam juta) | Model_1 | Brown      |

## Model Summary

### Model Fit

| Fit Statistic        | Mean      | SE | Minimum   | Maximum   |
|----------------------|-----------|----|-----------|-----------|
| Stationary R-squared | ,329      | .  | ,329      | ,329      |
| R-squared            | ,492      | .  | ,492      | ,492      |
| RMSE                 | 13703,184 | .  | 13703,184 | 13703,184 |
| MAPE                 | 16,867    | .  | 16,867    | 16,867    |
| MaxAPE               | 50,207    | .  | 50,207    | 50,207    |
| MAE                  | 7854,202  | .  | 7854,202  | 7854,202  |
| MaxAE                | 30725,165 | .  | 30725,165 | 30725,165 |
| Normalized BIC       | 19,329    | .  | 19,329    | 19,329    |

### Model Statistics

| Model   | Number of Predictors | Model Fit statistics |           |           |        |          |        |           | Ljung-Box Q(18) |    |      |
|---|----------------------|----------------------|-----------|-----------|--------|----------|--------|-----------|-----------------|----|------|
|   |                      | Stationary R-squared | R-squared | RMSE      | MAPE   | MAE      | MaxAPE | MaxAE     | Statistics      | DF | Sig. |
| Penerimaan Pembiayaan Kab.Pekalongan (dalam juta)-Model_1 | 0                    | ,329                 | ,492      | 13703,184 | 16,867 | 7854,202 | 50,207 | 30725,165 | .               | 0  | .    |

### Forecast

| Model   |          | 2010      | 2011      |
|---|----------|-----------|-----------|
| Penerimaan Pembiayaan Kab.Pekalongan (dalam juta)-Model_1 | Forecast | 75542,28  | 82938,59  |
|   | UCL      | 109072,76 | 132590,43 |
|   | LCL      | 42011,80  | 33286,75  |

For each model, forecasts start after the last non-missing in the range of the requested estimation period, and end at the last period for which non-missing values of all the predictors are available or at the end date of the requested forecast period, whichever is earlier.

Lampiran 11. Hasil Pengolahan Data Pengeluaran Pembiayaan dengan Program Software SPSS

### Pengeluaran Pembiayaan Kab.Pekalongan

#### Autocorrelations

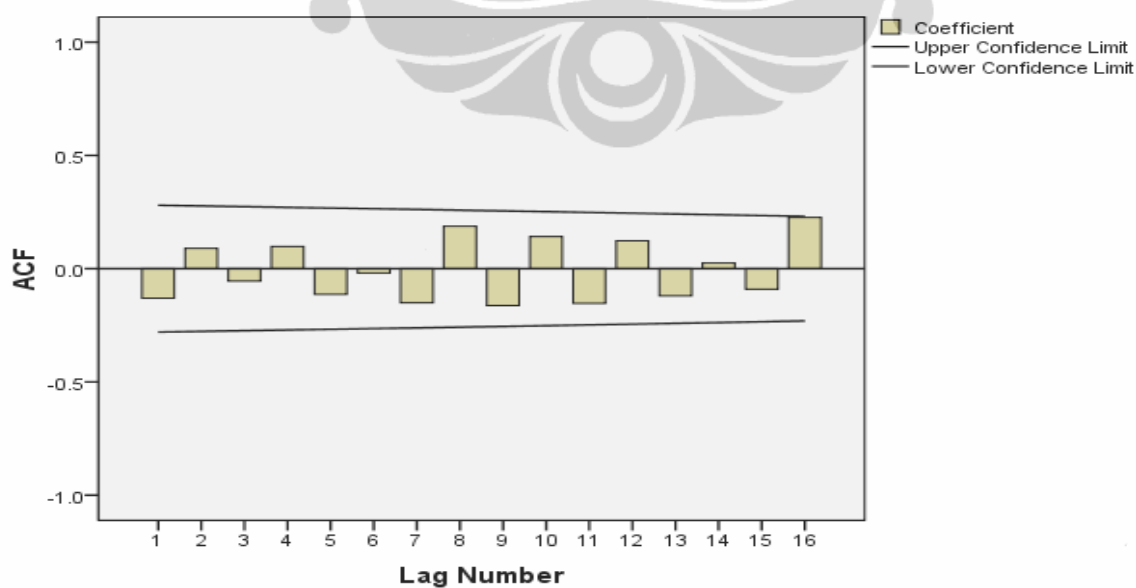
Series: Pengeluaran Pembiayaan Kab.Pekalongan

| Lag | Autocorrelation | Std. Error <sup>a</sup> | Box-Ljung Statistic |    |                   |
|-----|-----------------|-------------------------|---------------------|----|-------------------|
|     |                 |                         | Value               | df | Sig. <sup>b</sup> |
| 1   | -,130           | ,140                    | ,866                | 1  | ,352              |
| 2   | ,090            | ,138                    | 1,284               | 2  | ,526              |
| 3   | -,055           | ,137                    | 1,445               | 3  | ,695              |
| 4   | ,098            | ,135                    | 1,965               | 4  | ,742              |
| 5   | -,113           | ,134                    | 2,678               | 5  | ,750              |
| 6   | -,019           | ,132                    | 2,698               | 6  | ,846              |
| 7   | -,150           | ,131                    | 4,022               | 7  | ,777              |
| 8   | ,187            | ,129                    | 6,129               | 8  | ,633              |
| 9   | -,163           | ,127                    | 7,763               | 9  | ,558              |
| 10  | ,142            | ,126                    | 9,030               | 10 | ,529              |
| 11  | -,153           | ,124                    | 10,552              | 11 | ,482              |
| 12  | ,123            | ,122                    | 11,557              | 12 | ,482              |
| 13  | -,120           | ,121                    | 12,539              | 13 | ,484              |
| 14  | ,025            | ,119                    | 12,582              | 14 | ,560              |
| 15  | -,090           | ,117                    | 13,176              | 15 | ,589              |
| 16  | ,226            | ,115                    | 17,012              | 16 | ,385              |

a. The underlying process assumed is independence (white noise).

b. Based on the asymptotic chi-square approximation.

#### Pengeluaran Pembiayaan Kab.Pekalongan



## Seasonal Decomposition

Series Name: Pengeluaran Pembiayaan Kab. Pekalongan

| DATE_    | Original Series | Moving Average Series | Ratio of Original Series to Moving Average Series (%) | Seasonal Factor (%) | Seasonally Adjusted Series | Smoothed Trend-Cycle Series | Irregular (Error) Component |
|----------|-----------------|-----------------------|---|---------------------|----------------------------|-----------------------------|-----------------------------|
| JAN 2006 | ,000            | .                     | .   | 52,3                | ,000                       | -17,037                     | ,000                        |
| FEB 2006 | 1695,000        | .                     | .   | ,0                  | ,000                       | ,000                        | .                           |
| MAR 2006 | ,000            | .                     | .   | ,0                  | ,000                       | 34,074                      | ,000                        |
| APR 2006 | 618,000         | .                     | .   | 403,0               | 153,335                    | 51,112                      | 3,000                       |
| MAY 2006 | ,000            | .                     | .   | ,0                  | ,000                       | 34,074                      | ,000                        |
| JUN 2006 | ,000            | .                     | .   | 252,0               | ,000                       | 17,037                      | ,000                        |
| JUL 2006 | ,000            | 279,4167              | ,0  | 56,7                | ,000                       | ,000                        | .                           |
| AUG 2006 | ,000            | 287,5000              | ,0  | ,0                  | ,000                       | 30,144                      | ,000                        |
| SEP 2006 | ,000            | 636,2500              | ,0  | ,0                  | ,000                       | 93,913                      | ,000                        |
| OCT 2006 | 1000,000        | 636,2500              | 157,2   | 368,6               | 271,294                    | 157,683                     | 1,720                       |
| NOV 2006 | 40,000          | 709,7500              | 5,6   | 13,2                | 302,634                    | 181,774                     | 1,665                       |
| DEC 2006 | ,000            | 781,4167              | ,0  | 54,2                | ,000                       | 138,614                     | ,000                        |
| JAN 2007 | 97,000          | 864,7500              | 11,2  | 52,3                | 185,482                    | 95,453                      | 1,943                       |
| FEB 2007 | 5880,000        | 872,8333              | 673,7   | ,0                  | ,000                       | 82,571                      | ,000                        |
| MAR 2007 | ,000            | 872,8333              | ,0  | ,0                  | ,000                       | 103,314                     | ,000                        |
| APR 2007 | 1500,000        | 872,8333              | 171,9   | 403,0               | 372,171                    | 168,157                     | 2,213                       |
| MAY 2007 | 860,000         | 934,1667              | 92,1  | ,0                  | ,000                       | 189,911                     | ,000                        |
| JUN 2007 | 1000,000        | 930,8333              | 107,4   | 252,0               | 396,902                    | 211,665                     | 1,875                       |
| JUL 2007 | 97,000          | 1021,6667             | 9,5   | 56,7                | 171,055                    | 145,219                     | 1,178                       |
| AUG 2007 | ,000            | 1021,6667             | ,0  | ,0                  | ,000                       | 134,442                     | ,000                        |
| SEP 2007 | ,000            | 531,6667              | ,0  | ,0                  | ,000                       | 123,665                     | ,000                        |
| OCT 2007 | 1736,000        | 531,6667              | 326,5   | 368,6               | 470,966                    | 380,508                     | 1,238                       |
| NOV 2007 | ,000            | 406,6667              | ,0  | 13,2                | ,000                       | 572,308                     | ,000                        |
| DEC 2007 | 1090,000        | 335,0000              | 325,4   | 54,2                | 2011,680                   | 764,107                     | 2,633                       |
| JAN 2008 | 97,000          | 435,0000              | 22,3  | 52,3                | 185,482                    | 508,867                     | ,364                        |
| FEB 2008 | ,000            | 435,0000              | ,0  | ,0                  | ,000                       | 264,738                     | ,000                        |
| MAR 2008 | ,000            | 435,0000              | ,0  | ,0                  | ,000                       | 20,609                      | ,000                        |
| APR 2008 | ,000            | 435,0000              | ,0  | 403,0               | ,000                       | 97,021                      | ,000                        |
| MAY 2008 | ,000            | 290,3333              | ,0  | ,0                  | ,000                       | 213,047                     | ,000                        |
| JUN 2008 | 2200,000        | 307,0000              | 716,6   | 252,0               | 873,185                    | 329,074                     | 2,653                       |
| JUL 2008 | 97,000          | 224,5000              | 43,2  | 56,7                | 171,055                    | 251,059                     | ,681                        |
| AUG 2008 | ,000            | 224,5000              | ,0  | ,0                  | ,000                       | 135,033                     | ,000                        |
| SEP 2008 | ,000            | 224,5000              | ,0  | ,0                  | ,000                       | 187,136                     | ,000                        |
| OCT 2008 | ,000            | 224,5000              | ,0  | 368,6               | ,000                       | 356,766                     | ,000                        |
| NOV 2008 | 200,000         | 432,8333              | 46,2  | 13,2                | 1513,168                   | 566,011                     | 2,673                       |
| DEC 2008 | 100,000         | 432,8333              | 23,1  | 54,2                | 184,558                    | 438,997                     | ,420                        |
| JAN 2009 | 97,000          | 249,5000              | 38,9  | 52,3                | 185,482                    | 270,970                     | ,685                        |
| FEB 2009 | ,000            | 249,5000              | ,0  | ,0                  | ,000                       | 130,645                     | ,000                        |
| MAR 2009 | ,000            | 249,5000              | ,0  | ,0                  | ,000                       | 158,450                     | ,000                        |
| APR 2009 | 2500,000        | 257,9167              | 969,3   | 403,0               | 620,286                    | 206,762                     | 3,000                       |
| MAY 2009 | ,000            | 257,9167              | ,0  | ,0                  | ,000                       | 156,847                     | ,000                        |
| JUN 2009 | ,000            | 241,2500              | ,0  | 252,0               | ,000                       | 106,933                     | ,000                        |
| JUL 2009 | 97,000          | 249,5833              | 38,9  | 56,7                | 171,055                    | 57,018                      | 3,000                       |
| AUG 2009 | ,000            | .                     | .   | ,0                  | ,000                       | 38,012                      | ,000                        |
| SEP 2009 | 101,000         | .                     | .   | ,0                  | ,000                       | 19,006                      | ,000                        |
| OCT 2009 | ,000            | .                     | .   | 368,6               | ,000                       | 41,013                      | ,000                        |
| NOV 2009 | ,000            | .                     | .   | 13,2                | ,000                       | 123,039                     | ,000                        |
| DEC 2009 | 200,000         | .                     | .   | 54,2                | 369,116                    | 164,051                     | 2,250                       |



**Model Description**

|          |   |         |            |
|----------|---|---------|------------|
|          |   |         | Model Type |
| Model ID | Pengeluaran<br>Pembiayaan<br>Kab.Pekalongan<br>(dalam juta) | Model_1 | Holt       |

**Model Fit**

| Fit Statistic        | Mean     | SE | Minimum  | Maximum  |
|----------------------|----------|----|----------|----------|
| Stationary R-squared | ,844     | .  | ,844     | ,844     |
| R-squared            | -,077    | .  | -,077    | -,077    |
| RMSE                 | 1947,411 | .  | 1947,411 | 1947,411 |
| MAPE                 | 37,286   | .  | 37,286   | 37,286   |
| MaxAPE               | 94,005   | .  | 94,005   | 94,005   |
| MAE                  | 1247,799 | .  | 1247,799 | 1247,799 |
| MaxAE                | 3317,036 | .  | 3317,036 | 3317,036 |
| Normalized BIC       | 15,704   | .  | 15,704   | 15,704   |

**Model Statistics**

| Model  | Number of Predictors | Model Fit statistics |           |          |        |          |        |          | Ljung-Box Q(18) |     |       |
|--|----------------------|----------------------|-----------|----------|--------|----------|--------|----------|-----------------|-----|-------|
|  |                      | Stationary R-squared | R-squared | RMSE     | MAPE   | MAE      | MaxAPE | MaxAE    | Statistics      | D F | Sign. |
| Pengeluaran Pembiayaan Kab.Pekalongan (dalam juta)-Model_1 | 0                    | ,844                 | -,077     | 1947,411 | 37,286 | 1247,799 | 94,005 | 3317,036 | .               | 0   | .     |

**Forecast**

| Model  |          | 2010     | 2011     |
|--|----------|----------|----------|
| Pengeluaran Pembiayaan Kab.Pekalongan (dalam juta)-Model_1 | Forecast | 3096,02  | 3090,70  |
|  | UCL      | 8102,00  | 8097,45  |
|  | LCL      | -1909,96 | -1916,05 |

For each model, forecasts start after the last non-missing in the range of the requested estimation period, and end at the last period for which non-missing values of all the predictors are available or at the end date of the requested forecast period, whichever is earlier.

## Model Description

|          |   |         |            |
|----------|---|---------|------------|
|          |   |         | Model Type |
| Model ID | Pengeluaran<br>Pembiayaan<br>Kab.Pekalongan<br>(dalam juta) | Model_1 | Brown      |

## Model Summary

## Model Fit

| Fit Statistic        | Mean     | SE | Minimum  | Maximum  |
|----------------------|----------|----|----------|----------|
| Stationary R-squared | ,832     | .  | ,832     | ,832     |
| R-squared            | -,168    | .  | -,168    | -,168    |
| RMSE                 | 1851,883 | .  | 1851,883 | 1851,883 |
| MAPE                 | 38,117   | .  | 38,117   | 38,117   |
| MaxAPE               | 91,578   | .  | 91,578   | 91,578   |
| MAE                  | 1308,527 | .  | 1308,527 | 1308,527 |
| MaxAE                | 3464,265 | .  | 3464,265 | 3464,265 |
| Normalized BIC       | 15,326   | .  | 15,326   | 15,326   |

## Model Statistics

| Model   | Number of Predictors | Model Fit statistics |           |          |        |          |        |          | Ljung-Box Q(18) |     |      |
|---|----------------------|----------------------|-----------|----------|--------|----------|--------|----------|-----------------|-----|------|
|   |                      | Stationary R-squared | R-squared | RMSE     | MAPE   | MAE      | MaxAPE | MaxAE    | Statistics      | D F | Sig. |
| Pengeluaran Pembiayaan Kab.Pekalongan (dalam juta)- Model_1 | 0                    | ,832                 | -,168     | 1851,883 | 38,117 | 1308,527 | 91,578 | 3464,265 | .               | 0   | .    |

## Forecast

| Model   |          | 2010     | 2011     |
|---|----------|----------|----------|
| Pengeluaran Pembiayaan Kab.Pekalongan (dalam juta)- Model_1 | Forecast | 3122,03  | 3118,87  |
|   | UCL      | 7653,43  | 7663,68  |
|   | LCL      | -1409,36 | -1425,94 |

For each model, forecasts start after the last non-missing in the range of the requested estimation period, and end at the last period for which non-missing values of all the predictors are available or at the end date of the requested forecast period, whichever is earlier.

Lampiran 12. Proyeksi Posisi Kas Akhir Kabupaten Pekalongan tahun 2010

| Bulan        | Penerimaan        |                       |                   | Pengeluaran       |                        |                   | Posisi Kas bulanan | posisi kas akhir |
|--------------|-------------------|-----------------------|-------------------|-------------------|------------------------|-------------------|--------------------|------------------|
|              | Pendapatan Daerah | Penerimaan Pembiayaan | Total             | Belanja Daerah    | Pengeluaran Pembiayaan | Total             |                    |                  |
| 1            | 2                 | 3                     | 4=2+3             | 5                 | 6                      | 7=5+6             | 8=7+4              | 9                |
| Januari      | 86.524,94         | 70.429,40             | 156.954,34        | 26.254,16         | 134,93                 | 26.389,09         | 130.565,25         | 130.565,25       |
| Februari     | 51.262,24         |                       | 51.262,24         | 33.730,02         |                        | 33.730,02         | 17.532,22          | 148.097,47       |
| Maret        | 55.462,98         | 1.680,31              | 57.143,29         | 40.943,76         |                        | 40.943,76         | 16.199,53          | 164.297,00       |
| April        | 51.109,13         |                       | 51.109,13         | 58.176,43         | 1.039,74               | 59.216,17         | (8.107,04)         | 156.189,96       |
| Mei          | 63.183,00         |                       | 63.183,00         | 47.138,24         |                        | 47.138,24         | 16.044,76          | 172.234,72       |
| Juni         | 54.021,80         |                       | 54.021,80         | 83.931,42         | 650,16                 | 84.581,58         | (30.559,78)        | 141.674,94       |
| Juli         | 54.018,91         |                       | 54.018,91         | 65.642,68         | 146,29                 | 65.788,97         | (11.770,06)        | 129.904,88       |
| <b>Total</b> | <b>415.583,00</b> | <b>72.109,71</b>      | <b>487.692,71</b> | <b>355.816,71</b> | <b>1.971,12</b>        | <b>357.787,83</b> | <b>129.904,88</b>  |                  |

Lampiran 13. Simulasi Penghitungan Kas Menganggur Untuk Investasi Jangka Pendek  
Proyeksi Tahun Anggaran 2010 (dalam juta rupiah)

| Bulan    | Saldo Awal | Penerimaan | Total      | Pengeluaran | Saldo Akhir | Investasi | Saldo Giro | Pencairan Investasi | Kas Akhir |
|----------|------------|------------|------------|-------------|-------------|-----------|------------|---------------------|-----------|
| 1        | 2          | 3          | 4=2+3      | 5           | 6=4-5       | 7         | 8=6-7      | 9                   | 10=8+9    |
| Januari  | 70.429,40  | 0          | 70.429,40  | 26.389,09   | 44.040,31   | 19.000    | 25.040,31  | 0                   | 25.040,31 |
| Februari | 25.040,31  | 86.524,94  | 111.565,25 | 33.730,02   | 77.835,23   | 50.000    | 27.835,23  | 0                   | 27.835,23 |
| Maret    | 27.835,23  | 51.262,24  | 79.097,47  | 40.943,76   | 38.153,71   | 8.000     | 30.153,71  | 0                   | 30.153,71 |
| April    | 30.153,71  | 57.143,29  | 87.297,00  | 59.216,17   | 28.080,83   | -         | 28.080,83  | -                   | 28.080,83 |
| Mei      | 28.080,83  | 51.109,13  | 79.189,96  | 47.138,24   | 32.051,72   | -         | 32.051,72  | 17.000              | 49.051,72 |
| Juni     | 49.051,72  | 63.183,00  | 112.234,72 | 84.581,58   | 27.653,14   | -         | 27.653,14  | 12.000              | 39.653,14 |
| Juli     | 39.653,14  | 54.021,80  | 93.674,94  | 65.788,97   | 27.885,97   |           | 27.885,97  |                     | 27.885,97 |

**Lampiran 14. Penempatan Dana Kas Menganggur dalam Investasi Jangka Pendek (Deposito)  
Proyeksi Tahun Anggaran 2010 (dalam juta rupiah)**

| No                            | Penempatan Deposito | Jangka Waktu (bulan) | Bunga (6%/tahun) | Pendapatan Bunga | Pajak Bunga (20%) | pendapatan bunga bersih |
|-------------------------------|---------------------|----------------------|------------------|------------------|-------------------|-------------------------|
| 1                             | 19.000              | 3                    | 0,005            | 285              | 57                | 228                     |
| 2                             | 50.000              | 3                    | 0,005            | 750              | 159               | 591                     |
| 3                             | 8.000               | 3                    | 0,005            | 120              | 24                | 96                      |
| <b>Total Pendapatan Bunga</b> |                     |                      |                  | <b>1.155</b>     |                   | <b>915</b>              |