

INTEGRATING PASSENGER AND MODULO AS LEARNING TOOLS FOR COLLABORATIVE ENGINEERING EDUCATION

Kalamullah Ramli¹, Frank Schwarz², Stefan Werner², A Halim Shamsuddin³, and Axel Hunger²

1. Universitas Indonesia, Department of Electrical Engineering, Faculty of Engineering, Jakarta, Indonesia

2. Gerhard Mercator University, Institute of Multimedia and Software Engineering, Duisburg, Germany

3. Universiti Kebangsaan Malaysia, Faculty of Engineering, Bangi, Malaysia

E-mail: k.ramli@uni-duisburg.de

Abstrak

Universitas Indonesia (UI), Gerhard Mercator University (GMU) dan University Kebangsaan Malaysia (UKM) bekerjasama untuk mengembangkan program bersama tingkat sarjana (3+1) dan magister (1+1) serta berkolaborasi di bidang riset pengajaran ilmu teknik berbasis multimedia dan internet dan riset di bidang application level active networks. Paper ini menjelaskan pelaksanaan Offshore Project dan pengembangan aplikasi teknologi informasi untuk meningkatkan inovasi di bidang pengajaran ilmu teknik yang akan menyediakan lingkungan belajar berbasis multimedia dan internet yang lebih fleksibel kepada mahasiswa.

Abstract

The University of Indonesia (UI), Gerhard Mercator University (GMU), the Universiti Kebangsaan Malaysia (UKM) have agreed to cooperate as partners to develop a joint bachelor (3+1) and masters (1+1) degree, and collaborate in the research fields of multimedia- and internet-based learning and application level active networks. This paper describes the introduction of the Offshore Project and the extending of information technology applications to the partner institutions in this international cooperation which would very much enhance the operations of the new initiative in engineering education, which could provide students in far distance with more flexible learning environment.

Keywords: Groupware in education, multimedia-and Internet-based education concept

Introduction

Engineering Education throughout the world is undergoing significant changes in light of the changing world. The general recommendation is that "institutions must educate their students to work as part of teams, communicate well, and understand the economic, social, environmental and international context of their professional activities". Strategies and approaches have been developed by institutions to adapt to the current demand, while at the same time maintaining quality for the professional accreditation of the programmes.

The international context of Engineering Education has gained tremendous momentum, especially, over the last decade of the 20th century. With the globalisation of world-wide economy, the enhancing internationalisation

of universities, and the spread of inter-university credit exchange systems, many universities are now tying student exchange agreements with universities abroad and operating short-term study programmes. Beside producing graduates 'spiced' with 'international ingredient', such international co-operation between institutions from different countries in Engineering Education also provide one of the very many means of attaining international recognition and credibility.

In Europe, student mobility programme has been in operation since the introduction of Socrates-Erasmus Programme in 1987 [1]. During the period 1987 – 2000, over 750,000 students have benefited from the programme, involving 1,800 institutions in 30 countries. The European Community promotes study abroad as a means of improving the quality of academic co-operation

bringing benefits to students and higher education institutions. Studying abroad can be a particularly valuable experience. It is not only the best way to learn about other countries, ideas, languages and cultures; increasingly, it is an important part of professional and academic career development [2].

Methodology and Experiment

The Faculty of Engineering at the Gerhard-Mercator-University, Duisburg (GMU) in cooperation with the Faculty of Engineering at the University of Indonesia has acquired approval and funding from the German Academic Exchange Services (DAAD) for implementation of an Offshore Project named "Establishing Common Degree Courses in the field of Computer Engineering with Partners in the Southeast Asia". The Offshore Project proposes for the establishment of research collaboration and the development of joint degree programmes between the three Partner Universities, namely; Gerhard-Mercator-University, Universitas Indonesia and Universiti Kebangsaan Malaysia. The partner universities agree and have been initiating research collaboration in the field of distance multimedia- and internet-based learning, and application level active networks.

The main motivation of this international academic cooperation programme is centred on the initiatives for internationalisation of each individual partner institution. Passenger and Modulo have been created and developed to fulfil the need of Multimedia- and Internet-based learning at the three universities.

Learning Tools for Engineering Education

Applications of *Passenger* and *Modulo*, developed at GMU, have provided more effective and efficient learning environment in engineering education. *Passenger* is a synchronous groupware developed at GMU to support virtual student teams during a software engineering laboratory exercise. The newly developed education concept, *Modulo*, aims at creating new possibilities for differentiation and decentralized learning by a multimedia teaching and learning system. The didactical new conception of the learning environment is supposed to take the students different learning prerequisites into account. Thus, procurement methods are striven for that enable individual preparation, consultation and practice dependent on the students' educational background.

Extending the applications of *Passenger* and *Modulo* to the partner institutions in this international cooperation would very much enhance the operations of the new initiative in engineering education, which could provide students in far

distance with more flexible learning environment.

The Passenger Concept

Only in exceptional cases will an individual developer control the entire life cycle of a software system. Modern software engineering in any case signifies team work. The world-wide extension of the data networks and the continuing globalization add another component to software engineering: the development in worldwide distributed teams. Our experiences with software engineering projects showed, that the teams cooperate in different ways in the separate development phases. Different requirements on the computer support result from this. Earlier stages of the development require numerous group meetings with a high proportion of cooperative work. Videoconference systems and group editors can serve these computer supported face-to-face meetings.

In addition to that, special software engineering CASE-tools are necessary to support the design phase. Coding during the implementation phase mainly employs individual work and does not require special support because of its strong individual work character. An exception from this can be found in big software companies with development departments all over the world and in different time zones. In this case, the use of special tools can enable a 24-hour software production [4].

At the GMU Software Engineering is an one semester course that consists of two hours lecture and six hours of lab per week [5]. During the lab, the students work in teams on a close-to-reality task that is chosen in such a way that it can not be solved by an individual. Therefore, the students are forced to divide it into subtasks.

Tools to support the early design phases are required for asynchronous and synchronous sessions. Several investigations [6] deal with public available tools like Microsoft Netmeeting or SeeUSeeme but these tools drop out because of the different requirements for use in the educational field. The tools for synchronous work need to have more functions than publicly available tools like:

- a better support for discussions,
- the setup of partners images and relationship aspects,
- mechanisms for preventing communication breakdowns
and
- support for the students in their cooperative actions.

Looking at commercial systems shows that they drop out according to their high costs (license fees, connection costs in case of ISDN-based systems, asset costs). These results are gained from investigations published in [7]. Beyond that, the application of Software Engineering CASE-tools requires additional time of the students that depends on the tool complexity [8]. In case of Software Engineering CASE-tools it has to be taken into account that modern tools such as e.g. Prosa or Rational Rose perform consistency checks at model transitions from one level to another. But especially this work is supposed to be carried out by the students. From the design process view, this reduces the needed tool to a simple drawing tool with a special object library. Altogether, these arguments suggest the development of a individual Groupware that should contain:

- a synchronous communication tool,
- a floor control to support discussions and also to handle access to the commonly used resources and
- a Software Engineering CASE-tool for common modeling and document processing.

From a technical point of view a session management to control the network communication and a protocol stack to support the required network services are also needed.

System Architecture of Passenger

The above described tools require also mechanisms for multimedia data exchange in order to make efficient working over a computer network possible. Our tool concept sees windows-based systems as its target platform and the global internet as its transport medium. This concept is realised as a client/server architecture and several methods of data transfer have been implemented: unicast connections for client/server communications and multicast connections for interclient communications. Client/Server connections require reliable services for the transmission of document data, login data and control data. On the other hand, interclient connections only require unreliable services, but a guaranteed bandwidth and delay for the transmission of video- and audio-data. For the realisation of the above described architecture, a suitable protocol stack has to be developed. In a first step only implementations of standardised protocols which are currently available, or which will become available in the near future are used (IPv6, RSVP, RTP, ICMP).

The floor control is implemented on the server side and handles the access to the public window and the shared resources. Furthermore it coordinates the course of communication through an administration of different kinds of permissions, e.g. permissions to speak, permissions to alter the documents. Floor control approaches are usually mainly technically or social oriented. Our approach differs from those methods in that way, that it combines the advantages of technical and social floor passing methods. An essential part of our floor-control implementation is the permission list. This list can have three possible entries. The actual spokesperson is followed by the next two clients who requested to speak. Each demand of the permissions and each passing of the permissions results in updating this list. Important is that the list never shows two equal entries. Thus two members cannot exclude the third person from the discussion. Further more a tutor can be called by any user at any time. Therefore the model serves all of the above formulated requirements.

Working in a team, dividing up the given task into subtasks, discussing provisional results and integrating first results afterwards, already require discipline of the students without using groupware. The usage of videoconference techniques also requires that students work in a completely new scenario. Thus interface design obtains an outstanding meaning. Our client user interface contains video screens of each member and a CASE-tool in a public window for the common process on the outline documents. Figure 1 shows the user interface of the client software. Each member has the same view of the window according to the WYSIWIS-principle, but only one of them can alter the document at a certain time. A telepointer serves to elucidate and to present facts. Each member is also equipped with a private working window for trying out ideas. A chat window was implemented so the conference can be ended simultaneously in case of bad transfer circumstances.

Other features of the user interface result from the above mentioned demands,

- (a) of setting up and promoting partner images and relationship aspects and
- (b) of supporting group awareness.

These requirements are taken into account by the following design and implementation steps:

- each member is represented in an individual video screen
 - (a),
- the members are always shown in the same video screen

- (a),
- the video screens can not be changed in either size or position (a),
- none of the video screens can be covered up by another window (a),
- the video screen of the person who has access to the shared resources is always highlighted (b),
- the entries of the permission list can be fetched and visualized (b) and
- the CASE-tool contains a global and local history of changes (b).

The Modulo Concept

The project Modulo aims at forming new possibilities for differentiation and for a decentralized learning by using a multimedia teaching and learning concept. The didactical new conception of the course should take the different learning suppositions of the students into account. Thus, imparting methods should be aspired, which enable a varying dimension of preparation, consultation and practice effort for the students dependent on their educational background.

The hitherto course forms need to be supplemented on a computer basis by means of suitable concepts and realizing these by means of multimedia techniques in order to procure the contents and to translate the quoted objective targets into action. The interactive, multimedia teaching and learning software is set up so that the different learning methods of the students are taken into account. Thus, different possibilities of accessing the study material exist. One possibility of access is the subject structure. Here, students can choose his or her way of learning according to the content structure of the lecture. The previous course form used exercises as trial and application of the taught theories. These are also implemented into the interactive learning concept in a suitable way.

By means of the second entry possibility, the interaction between the theories, that needs to be learned, and the later practical experience will be clarified on the basis of a concrete task of the technical development environment. Thus, a learning-goal oriented or res. problem oriented learning is enabled. The students act upon a given action structure. This so called Scenario is echangeable, so that the individual educational background of the student can be brought into line.

The emphasis of the technical implementation of Modulo lies on the platform-independent and support of standard Browsers for the user interface. Furthermore the software is accessible via the internet. This enables the learner to determine his or her workplace as well as his or her working time flexibly: be it home workplace, or public computer laboratories at the university which are frequently used particularly during intensive group-work phases. The software itself is design in a modular way to easily exchange and update the moduls.

Purpose and Evaluation

The Modulo software should be employed and evaluated within the scope of the lecture „Fundamentals of Computer Science”, which are to be attended 5 hours per week. The students need to spent the same amount of time preparing and revising the topics learned during the lectures. Hereto, the Modulo software can be used. The content of the lecture is particularly based on the fundamentals of Boolean algebra and switching algebra which lead to technical implementation of logical circuits and the construction of digital circuits and systems as well as the construction of simple digital computers.

Aim of the project Modulo is the permanent introduction of new media as a supporting step to the hitherto presence-

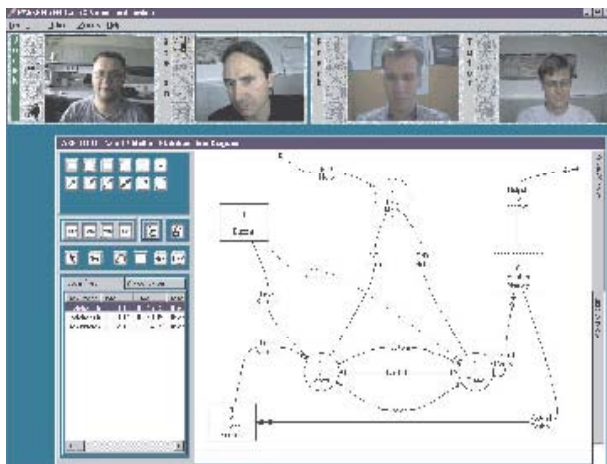


Figure 1. Passenger client user interface

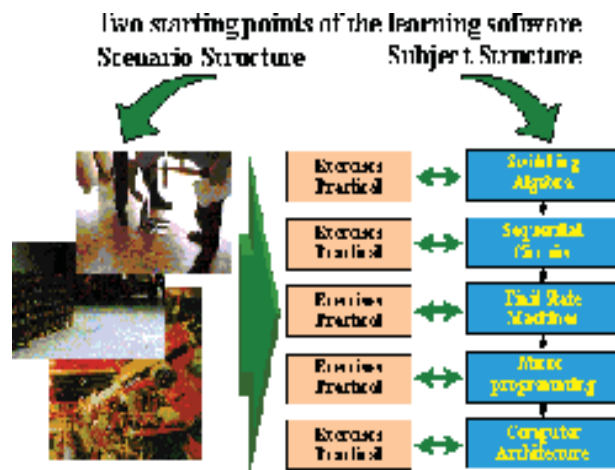


Figure 2. System architecture of modulo

teaching-concepts. Students should be enabled:

- to acquire the necessary professional information more efficiently for studying; as well as
- to experience teaching and learning corresponding to the current pedagogical concepts.

First observations of student groups during their work, which took place during the development accompanying testing of Modulo, showed that the comparative studying of textbooks and especially the regular attendance of lectures tends to lose importance through the introduction of web-based instruction, while the co-operative working in the student group as well as the personal contact with the teacher was rather of increasing importance to the students. The same effect was found in a survey of J. G. Schutte [9].

With the background of this perception the teacher have the aspiration of being able to control the specific modifications of the learning culture, so that solutions for a number of already long-term perceived problems of the engineering studies can be found:

- in comparison to the requirements for the professional life, too little training of the capacity of teamwork,
- strong orientation of the studies on a subject structure and
- lacking integration of superior and professional relations.

The evaluation of Modulo is divided into three core areas:

- *Group Interview*

According to our surveillance, the essential part of the collegiate learning and working takes place in small groups

outside of the lecture time. Collegiate employees should survey the functioning of these groups in respect of the use of media or res. the distribution of the group.

- *Record of the Utilization Statistic of the Web-Based Instructions*

Person-based user profiles could be diagrammed by an automated evaluation of the protocols of the web-server. These profiles should adjusted to the results of the questionnaires and group interviews.

- *Questionnaires to Register the Entirety of the Learners*

The questionnaire records the personal data of the participants, their learning strategy (among others the distribution of attention on diverse sources of information in various learning situations), their social behavior and their study satisfaction. Each of these questions

situational scrutinizes the role of the newly introduced media.

Conclusion

We have developed Passenger and Modulo as tools for a more flexible multimedia- and internet-based learning environment. These tools can be used for distance learning, teleconference and groupware for education.

The implementation of these tools into the three partner universities makes the exchange of lectures material can be realised on-line and immediate despite the long distance and time difference. These tools are the basis of our further cooperation such as presenting joint lectures, creating joint lecture materials and conducting research in the field of multimedia- and internet-based learning.

Acknowledgment

DAAD for funding of the Offshore Project. GMU, UI, and UKM for supporting the programme and for providing necessary facilities for these cooperation.

References

1. EU, The European Commission – Socrates Programme – Higher Education (ERASMUS). <http://europa.eu.int/comm/education/erasmus.html>, 2001
2. DAAD, Success Stories IV – Das European Credit Transfer System (ECTS) in Deutschland, 2001.
3. I. Gorton, S. Motwani, Issues in co-operative software engineering using globally distributed teams, in Information And Software Technology, Vol. 38, Elsevier, 1996, p. 647.
4. A. Hunger. The Concepts of the Internationally Orientated Degree Course, Computer Science and Communications Engineering, in Proceedings of the International Conference on Engineering Education, 1998, p.324.
5. Brereton, Lees, Gumbley, Boldyreff. Distributed group working in software engineering education, in Information and Software Technology, Vol. 40, Elsevier, 1998, p.221.
6. H. S. Sarjoughian, B. P. Zeigler, M. Ham, J. Parris. Distributed Group Software Engineering Projects: Challenges to State-of-the-Art Collaboration