

# LAMPIRAN



**Lampiran - 1**  
**Daftar nama produk akhir yang diproduksi PT. MIPCI**  
**selama tahun 2007**



BARANG :

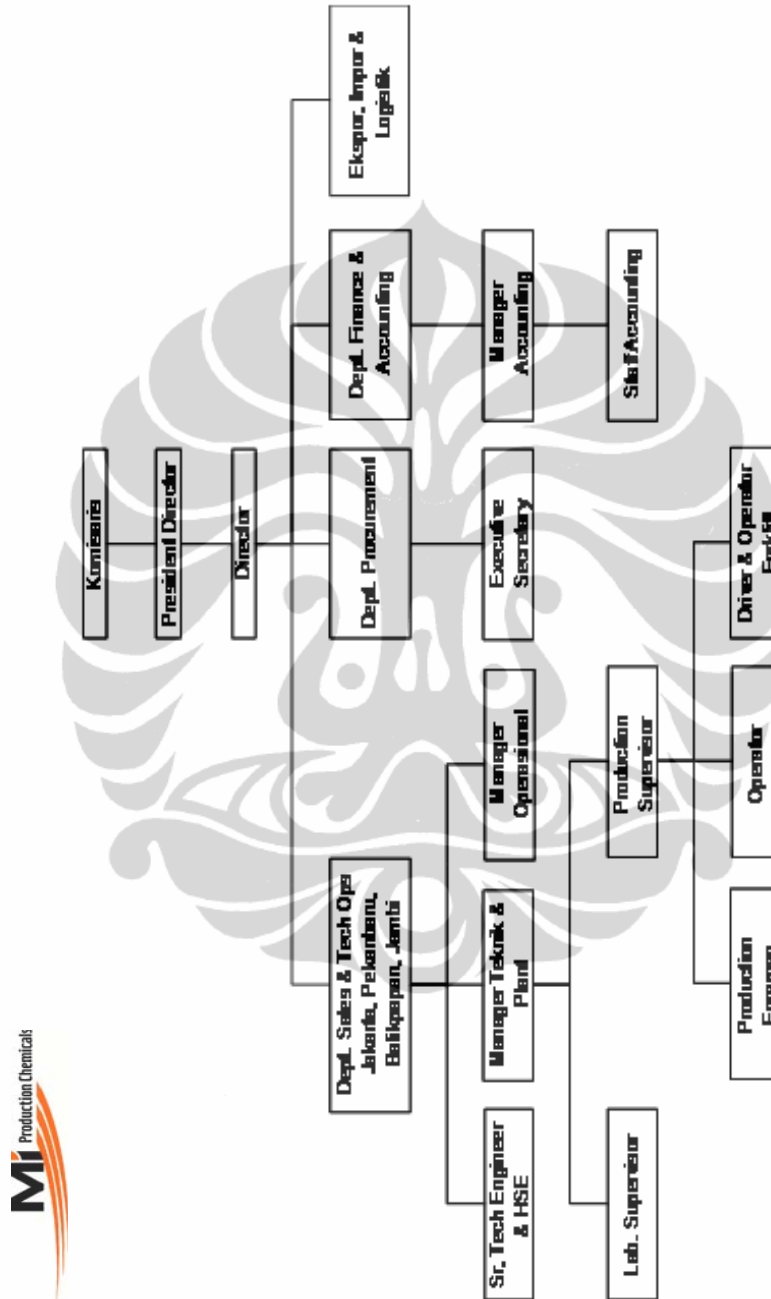
Kimap	Hasil Produksi	Jenis Produk	Standar	Kapasitas	Merk Dagang
J	Chemical	# Demulsifier # Reverse Demulsifier # Flocculant Aid # Corrosion Inhibitor # Scale Inhibitor # Biocide # O2 Scavenger # H2S Scavenger # Pour Point Deppressant # Cleaners	Specialty Chemical Specialty Chemical Specialty Chemical Specialty Chemical Specialty Chemical Specialty Chemical Specialty Chemical Specialty Chemical Specialty Chemical	6.240.000 liter / tahun	

Kimap	Hasil Produksi	Nama Produk	Type
		CC-0105/D/PE/200	WATER
		CC-5137/D/PE/200	WATER
		CC-5137/T/PE/1000	WATER
		DF-0510/D/CS/200	OIL
		DF-9006/D/CS/200	OIL
		DF-9052/D/CS/200	OIL
		DF-9057/D/CS/200	OIL
		DIST/T/PE/1000	WATER
		EB-5839/D/CS/200	OIL
		EB-8096/D/CS/200	OIL
		EB-8127/D/CS/200	OIL
		EB-8132/D/CS/200	OIL
		EB-8132/T/PE/1000	OIL
		EB-8140/D/CS/200	OIL
		EB-8141/D/CS/200	OIL
		EB-8171/D/CS/200	OIL
		EB-8176/D/CS/200	OIL
		EB-8414/T/PE/1000	OIL
		EB-8497/D/PE/200	OIL
		EB-8501/D/PE/200	OIL
		EB-8519/T/PE/1000	OIL
		EB-8548/D/PE/200	OIL
		EB-8549/D/PE/200	OIL
		EB-8567/D/PE/200	OIL
		HR-2510/D/CS/200	WATER
		JC-0711/D/PE/200	WATER
		KI-0324/D/CS/200	WATER
		KI-0384/D/PE/200	WATER
		KI-3003/D/PE/200	WATER
		KI-3015/D/CS/200	WATER
		KI-3015/T/PE/1000	WATER
		KI-3043/D/PE/200	WATER
		KI-3059/D/PE/200	WATER
		KI-3107/D/CS/200	WATER
		KI-4050/P/PE/20	WATER
		KI-5331/D/PE/200	WATER
		MB-0590/2	WATER
		MB-5007/D/PE/200	WATER
		MB-5529/D/PE/200	WATER
		MS-0025/P/PE/5	WATER
		OR-0527/D/PE/200	WATER
		PI-7010/D/CS/200	OIL

Kimap	Hasil Produksi	Nama Produk	Type
		PI-7018/D/CS/200	OIL
		PI-7026/D/CS/200	OIL
		PI-7039/D/CS/200	OIL
		PI-7142/D/CS/200	OIL
		PI-7142/T/PE/1000	OIL
		PI-7235/D/CS/200	OIL
		PI-7251/D/CS/200	OIL
		PI-7399/D/CS/200	OIL
		S-1101/D/PE/200	OIL
		S-1103/T/PE/1000	OIL
		SI-0475/D/PE/200	WATER
		SI-4055/D/PE/200	WATER
		SI-4564/D/PE/200	WATER
		SI-4564/T/SS/1000	WATER
		SI-4564/T/SS/1300	OIL
		SI-4566/D/PE/200	WATER
		SI-4608/T/SS/1300	WATER
		UC-1500/D/PE/200	WATER
		UC-1516/D/PE/200	WATER
		UC-1539/D/PE/200	WATER
		WT-0510/D/PE/200	WATER
		WT-0512/D/PE/200	WATER
		WT-1046/D/PE/200	WATER
		WT-1048/D/PE/200	WATER
		WT-1050/D/PE/200	WATER
		WT-1051/D/PE/200	WATER
		WT-1352/T/PE/1000	WATER
		WT-1353/D/PE/200	WATER
		WT-1357/D/PE/200	WATER
		WT-1368/D/PE/200	WATER
		WT-1395/D/PE/200	WATER
		WT-1400/D/PE/200	WATER
		WT-1419/D/PE/200	WATER
		WT-1420/D/PE/200	WATER

*Sumber: Production Dept. PT.MIPCI*

## Lampiran - 2 Struktur Organisasi PT. MIPCI



Sumber: Finance & Accounting Dept. PT.MIPCI

## Lampiran - 3

### Daftar peralatan yang digunakan dalam proses produksi PT. MIPCI

#### Peralatan Produksi

1. 3 unit tanki pencampur (blending vessel) dilengkapi dengan motor listrik 7 HP dan pompa tripod sirkulasi
2. 2 unit tanki bahan baku masing masing kapasitas 16.000 liter
3. 1 unit tanki air kapasitas 6000 liter
4. 1 unit timbangan elektronik kapasitas 1500 kg
5. 1 unit timbangan manual kapasitas 500 kg
6. 2 unit pompa sentrifugal (transfer limbah dan bahan baku)
6. 1 unit alat pembersih (cleaner sprayer)
7. 4 unit komputer desktop (program calliach produksi)

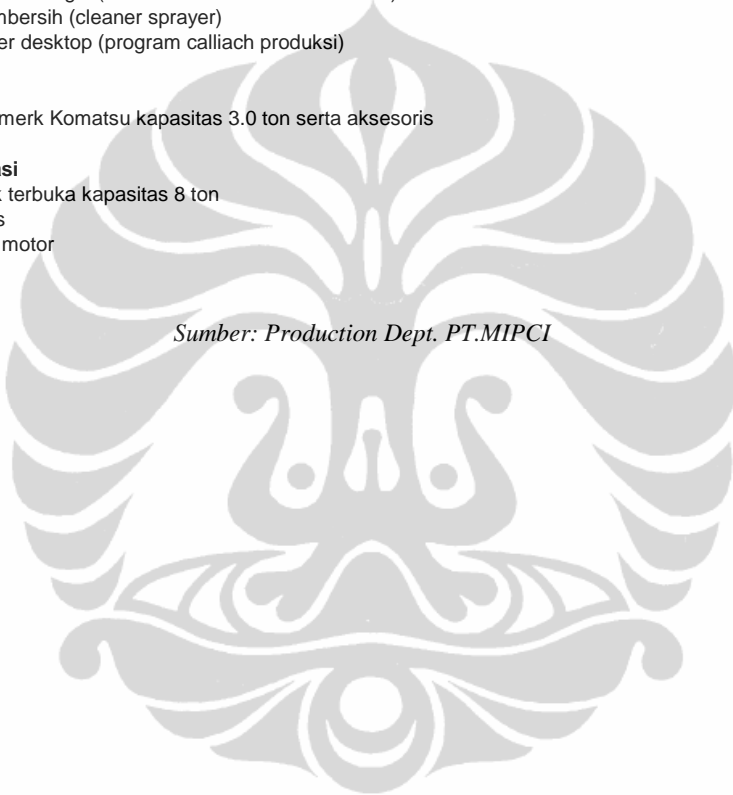
#### Alat angkat

1. 1 Unit forkliff merk Komatsu kapasitas 3.0 ton serta aksesoris

#### Alat Transportasi

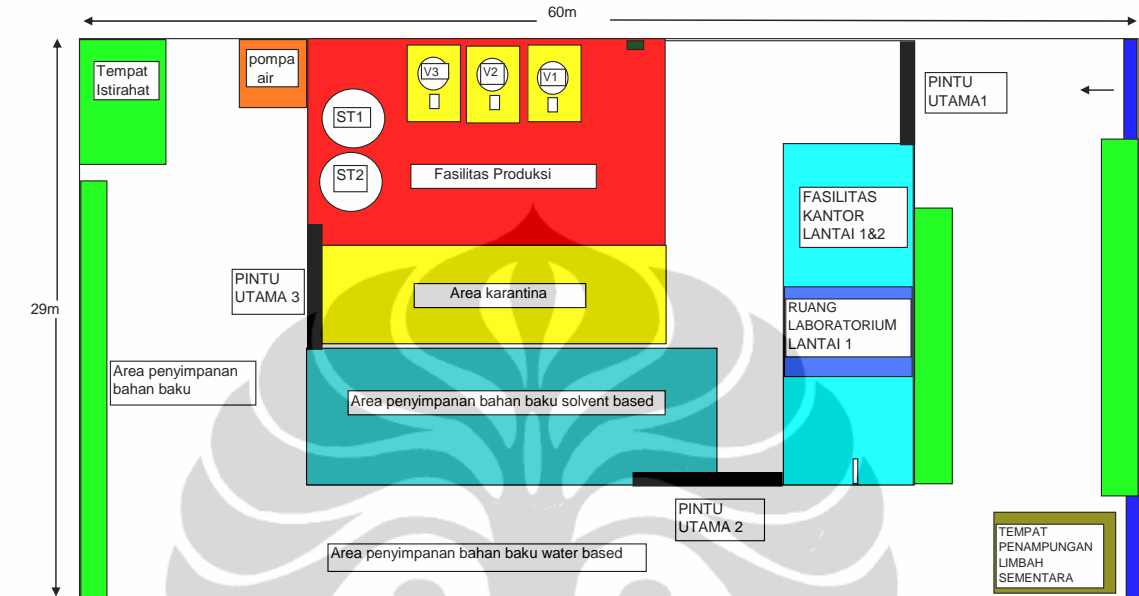
1. 1 unit truk bak terbuka kapasitas 8 ton
2. 3 unit mini bus
3. 1 unit sepeda motor

*Sumber: Production Dept. PT.MIPCI*



## Lampiran - 4

### Daftar peralatan yang digunakan dalam proses produksi PT. MIPCI



**Keterangan**

- |                                               |                                                               |
|-----------------------------------------------|---------------------------------------------------------------|
| 1. Luas Area Pabrik 1740 m <sup>3</sup>       | 4. Luas ruang laboratorium 16.1 m <sup>3</sup>                |
| 2. Luas Bangunan 828 m <sup>3</sup>           | 5. Luas fasilitas kantor 128 m <sup>3</sup>                   |
| 3. Luas Fasilitas Produksi 117 m <sup>3</sup> | 6. Luas tempat penampungan limbah sementara 30 m <sup>3</sup> |

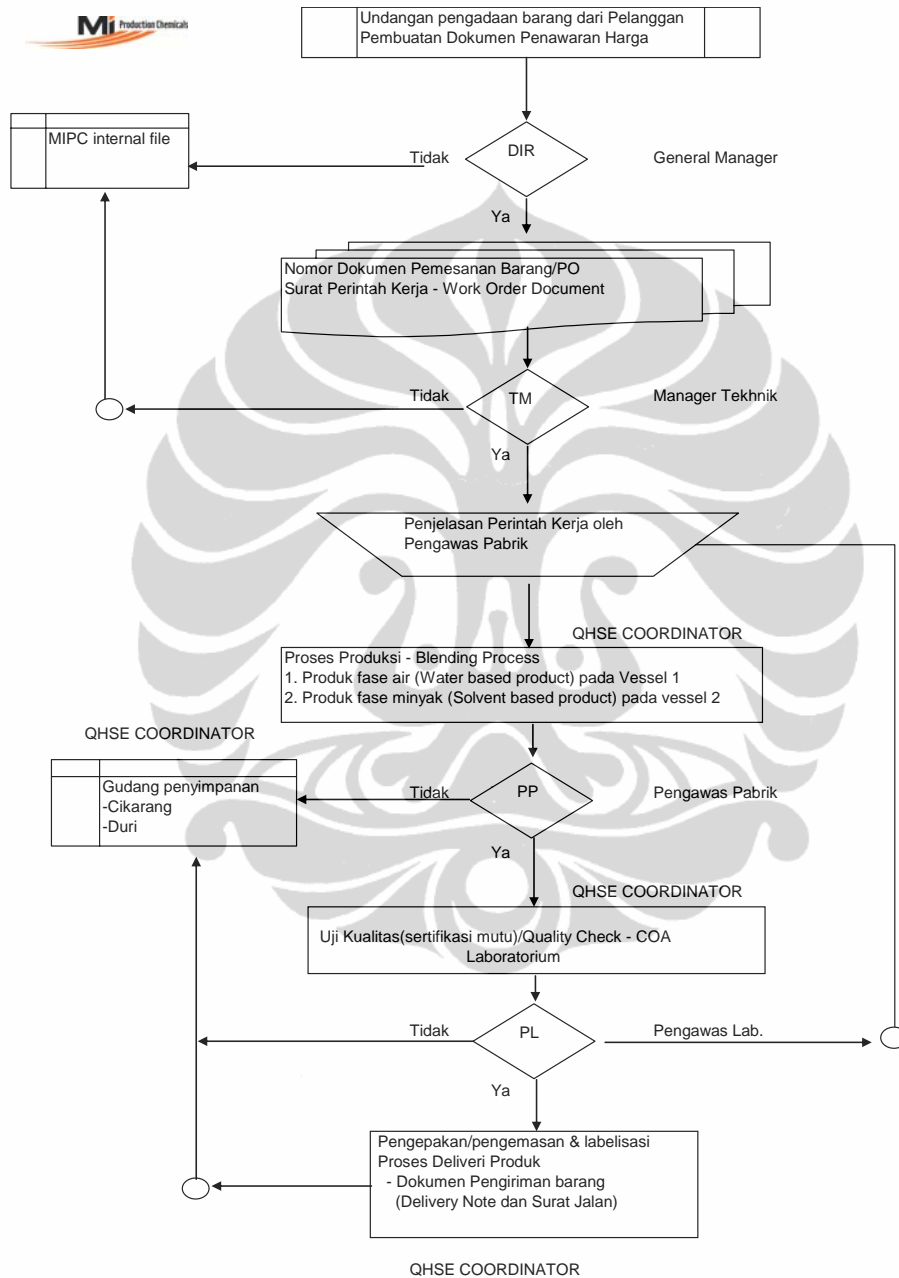
b



*Sumber: Production Dept. PT.MIPCI*

## Lampiran - 5

### Flow Chart aktivitas untuk Proses produksi PT. MIPCI



Sumber: Production Dept. PT.MIPCI

## Lampiran - 6

### Daftar Bahan Baku untuk Proses produksi PT. MIPCI



No.	Prod. Code RS-No	Unit Kg	Product Classification	Product Description	Status	Origin
1	RS 0007	179	Oil based	Solvent	Local	Sentra Kemika-Jakarta
2	RS 0028	200	Oil based	Methanol	Local	Ikasari Sentosa-Jakarta
3	RS 0035	220	Oil based	MEA	Local	Sentra Kemika-Jakarta
4	RS 0038	225	Oil based	EG	Local	Sentra Kemika-Jakarta
5	RS 0046	160	Oil based	Solvent	Import	Dyno Singapore
6	RS 0047	170	Oil based	IPA	Local	Indochemicals-Jakarta
7	RS 0047	180	Oil based	Solvent	Import	Dyno Singapore
8	RS 0066	300	Water based	Caustic soda	Local	CV. Kurnia Jaya/Ikasari
9	RS 0075	180	Oil based	Resin	Import	Dyno Singapore
10	RS 0100	200	Oil based	Solvent	Local	Ikasari Sentosa-Jakarta
11	RS 0147	200	Oil based	Solvent	Import	Dyno Singapore
12	RS 0232	200	Oil based	Solvent	Import	Dyno Singapore
13	RS 0400	258	Oil based	Resin	Import	Dyno Singapore
14	RS 0413	163.5	Oil based	Solvent	Local	Ikasari Sentosa-Jakarta
15	RS 0417	184	Oil based	Solvent	Local	Ikasari Sentosa-Jakarta
16	RS 0492	188	Oil based	Solvent	Local	Sentra Kemika-Jakarta
17	RS 0579	226.8	Water based	Biocide	Import	Dyno Singapore
18	RS 0587	175	Oil based	Solvent	Import	Dyno Singapore
19	RS 0656	200	Water based	Formalin	Import	Dyno Singapore
20	RS 0720	200	Oil based	Solvent	Import	Dyno Singapore
21	RS 0730	216	Water based	Liquid Polymer	Import	Dyno Singapore
22	RS-0776	30	Water based	Acetic Acid Glac	Local	Ikasari Sentosa-Jakarta
23	RS-0806	200	Oil based	Resin	Import	Dyno Singapore
24	RS-0813	220	Water based	Liquid Polymer	Import	Dyno Singapore
25	RS 0828	202	Oil based	Resin	Import	Dyno Singapore
26	RS 9000	200	Oil based	Resin	Import	Dyno Singapore
27	RS 9001	200	Oil based	Resin	Import	Dyno Singapore
28	RS 9002	206.8	Oil based	Resin	Import	Dyno Singapore
29	RS 9003	205	Oil based	Resin	Import	Dyno Singapore
30	RS 9005	225	Oil based	Liquid Polymer	Import	Dyno Singapore
31	RS 9007	200	Oil based	Resin	Import	Dyno Singapore
32	RS 9009	125	Water based	Biocide	Import	Dyno Singapore
33	RS 9010	260	Water based	Thioglicolic Acid	Local	Sentra Kemika-Jakarta
34	RS 9011	900	Water based	Resin	Import	Dyno Singapore
35	RS 9012	900	Water based	Resin	Import	Dyno Singapore
36	RS 9013	180	Oil based	Resin	Import	Dyno Singapore
37	RS 9014	200	Water based	Resin	Import	Dyno Singapore
38	RS 9015	200	Oil based	Resin	Import	Dyno Singapore
39	RS 9016	200	Water based	Surfactant	Import	Dyno Singapore
40	RS 9017	213.2	Water based	Surfactant	Import	Dyno Singapore
41	RS 9019	190	Water based	Biocide	Local	Sentra Kemika-Jakarta
42	RS 9023	200	Oil based	Resin	Import	Dyno Singapore
43	RS 9026	200	Oil based	Resin	Import	Dyno Singapore
44	RS-9034	204.2	Oil based	Resin	Import	Dyno Singapore
45	RS 9036	200	Water based	Distilled Water	Import	Dyno Singapore
46	RS 9039	200	Oil based	Resin	Import	Dyno Singapore
47	RS 9044	200	Oil based	Resin	Import	Dyno Singapore
48	RS 9047	225	Oil based	Liquid Polymer	Import	Dyno Singapore
49	RS 9048	226.8	Oil based	Resin	Import	Dyno Singapore
50	RS 9048	260	Oil based	Resin	Import	Dyno Singapore





No.	Prod. Code RS-No	Unit Kg	Product Classification	Product Description	Status	Origin
51	RS 9051	260	Water based	Surfactant	Import	Dyno Singapore
52	RS 9054	25	Water based	Powder Polymer	Import	Dyno Singapore
53	RS 9056	200	Oil based	Liquid Polymer	Import	Dyno Singapore
54	RS 9058	200	Oil based	Resin	Import	Dyno Singapore
55	RS 9061	200	Oil based	Resin	Import	Dyno Singapore
56	RS 9062	200	Oil based	Resin	Import	Dyno Singapore
57	RS 9063	200	Oil based	Resin	Import	Dyno Singapore
58	RS 9064	200	Oil based	Resin	Import	Dyno Singapore
59	RS 9065	200	Oil based	Resin	Import	Dyno Singapore
60	RS 9075	280	Water based	Resin	Import	Dyno Singapore
61	RS 9081	250	Water based	Resin	Import	Dyno Singapore
62	RS 9085	200	Oil based	Solvent	Import	Dyno Singapore
63	RS 9086	200	Water based	Biocide-Solid	Import	Dyno Singapore
64	RS 9088	170	Oil based	Solvent	Import	Dyno Singapore
65	RS 9093	200	Oil based	Liquid Polymer	Import	Dyno Singapore
66	RS 9094	200	Oil based	Liquid Polymer	Import	Dyno Singapore
67	RS 9099	201.12	Oil based	Resin	Import	Dyno Singapore
68	RS 9101	225	Oil based	TEG	Local	Sentra Kemika-Jakarta
69	RS 9107	212.73	Water based	Liquid Polymer	Import	Dyno Singapore
70	RS 9106	200	Oil based	Resin	Import	Dyno Singapore
71	RS 9108	180	Oil based	Resin	Import	Dyno Singapore
72	RS 9109	210	Oil based	Resin	Import	Dyno Singapore
73	RS 9112	200	Water based	Liquid Polymer	Import	Dyno Singapore
74	RS 9118	156	Oil based	Solvent	Import	Dyno Singapore
75	RS 9122	200	Water based	Fresh Water	Import	Dyno Singapore
76	RS 9123	216	Water based	Liquid Polymer	Import	Dyno Singapore
77	RS 9125	170	Oil based	Resin	Import	Dyno Singapore
78	RS 9127	25	Water based	Sodium thiosulfat	Local	Sentra Kemika-Jakarta
79	RS 9128	208.6	Oil based	Solvent	Import	Dyno Singapore
80	RS 9129	210	Water based	Biocide	Import	Dyno Singapore
81	RS 9137	180	Oil based	Resin	Import	Dyno Singapore
82	RS 9138	204.5	Oil based	Resin	Import	Dyno Singapore
83	RS 9148	200	Oil based	Resin	Local	Dyno Singapore
84	RS 9153	200	Oil based	Resin	Import	Dyno Singapore
85	RS 9162	200	Oil based	Solvent	Import	Dyno Singapore
86	RS 9181	172.5	Oil based	Solvent	Import	Dyno Singapore
87	RS 9185	160	Oil based	Resin	Import	Dyno Singapore
88	RS 9186	200	Oil based	Resin	Import	Dyno Singapore
89	RS 9193	215	Oil based	Liquid Polymer	Import	Dyno Singapore
90	RS 9107	212	Water based	Liquid Polymer	Import	Dyno Singapore
91	RS-9200	170	Oil based	Solvent	Import	Dyno Singapore
92	RS-9211	240	Water based	Hydrochloride Acid	Local	Raka Kimia Mulya-Jakarta
93	RS-9217	200	Oil based	Resin	Import	Dyno Singapore
94	RS-9218	200	Oil based	Resin	Local	Sentra Kemika-Jakarta
95	RS-9220	208	Water based	Surfactant	Import	Dyno Singapore
96	RS-9225	170	Water based	Surfactant	Local	Sentra Kemika-Jakarta

Sumber: Production Dept. PT.MIPCI