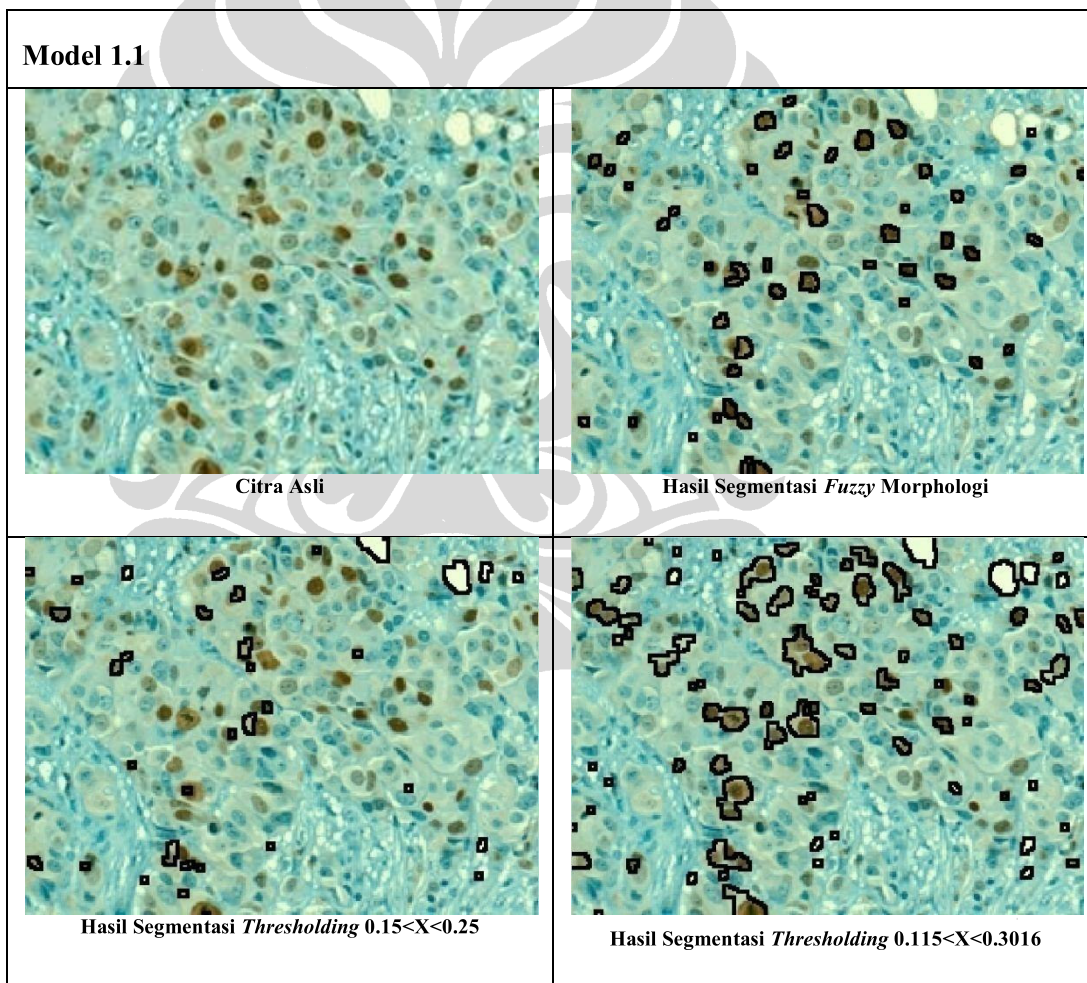
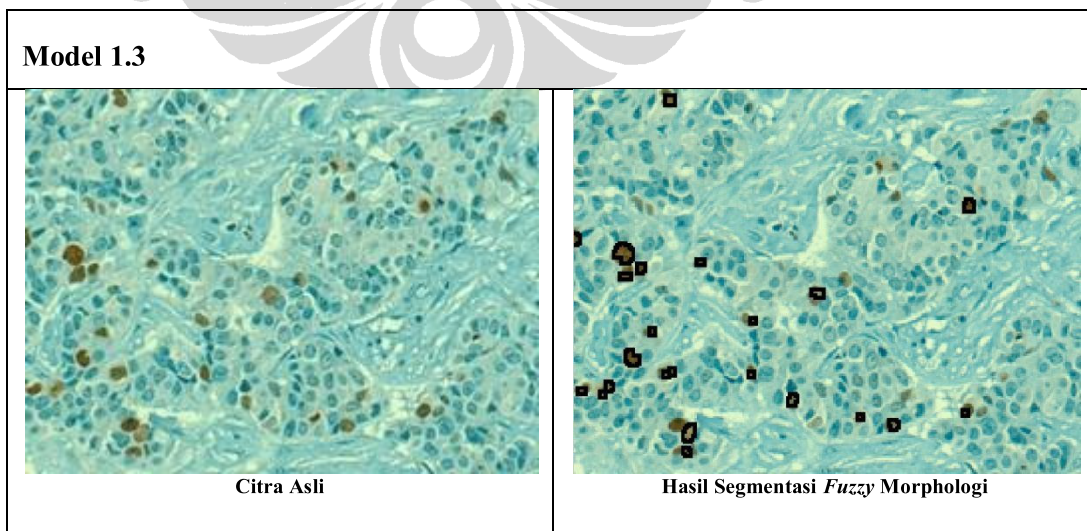
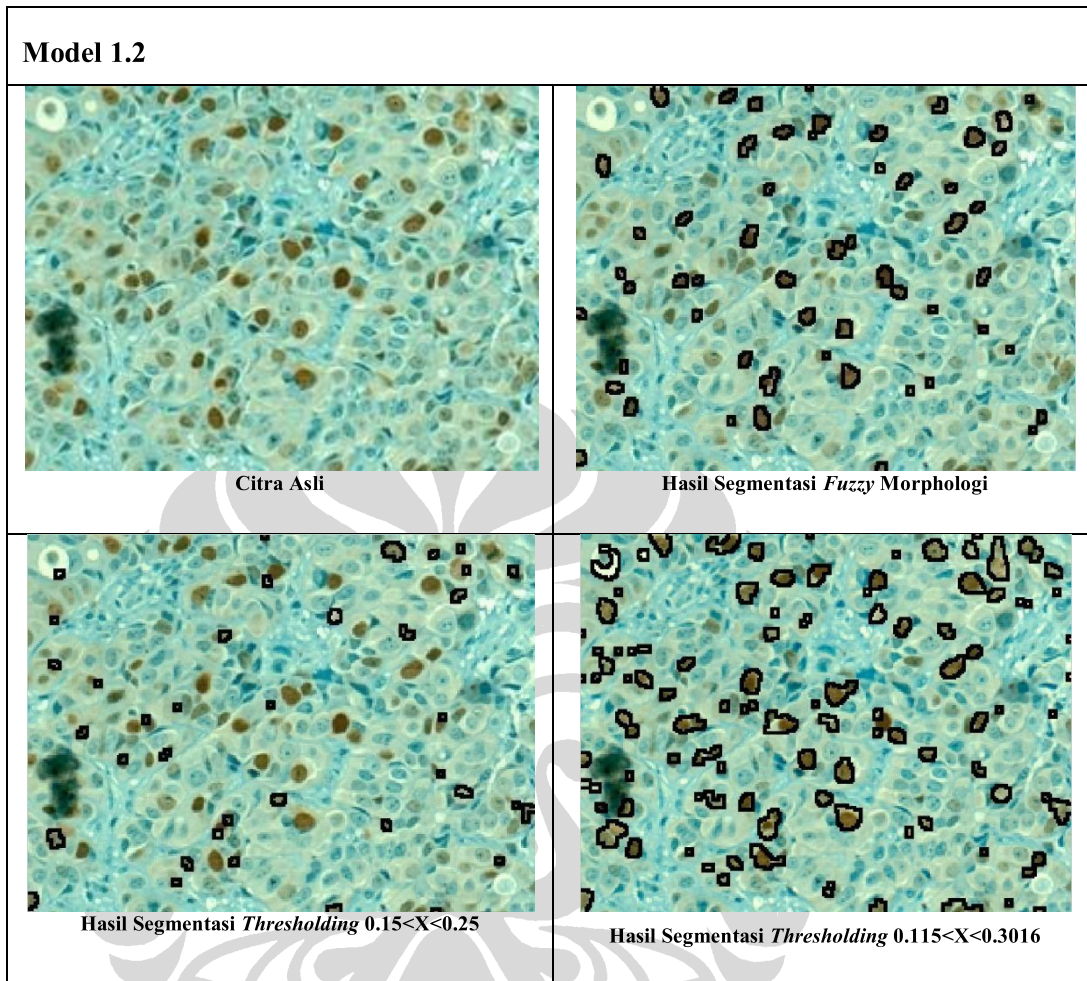
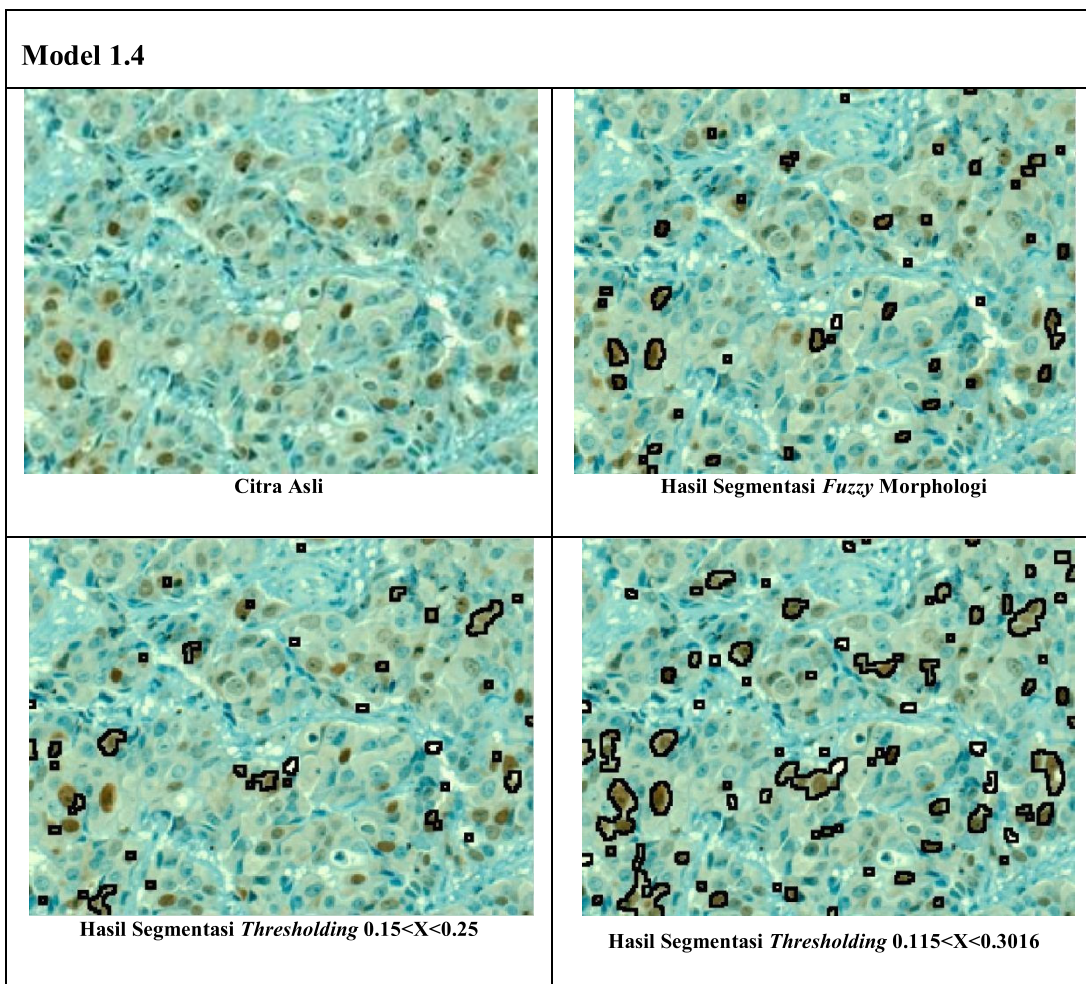
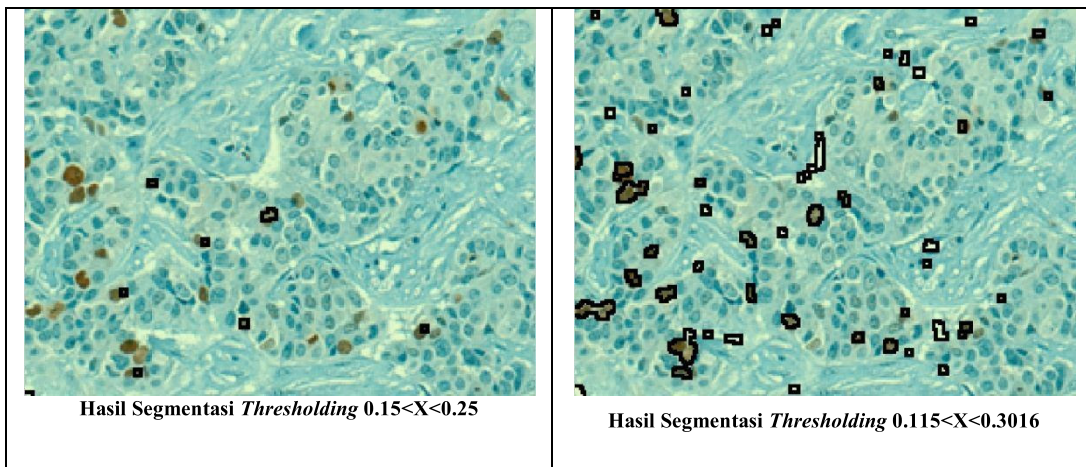


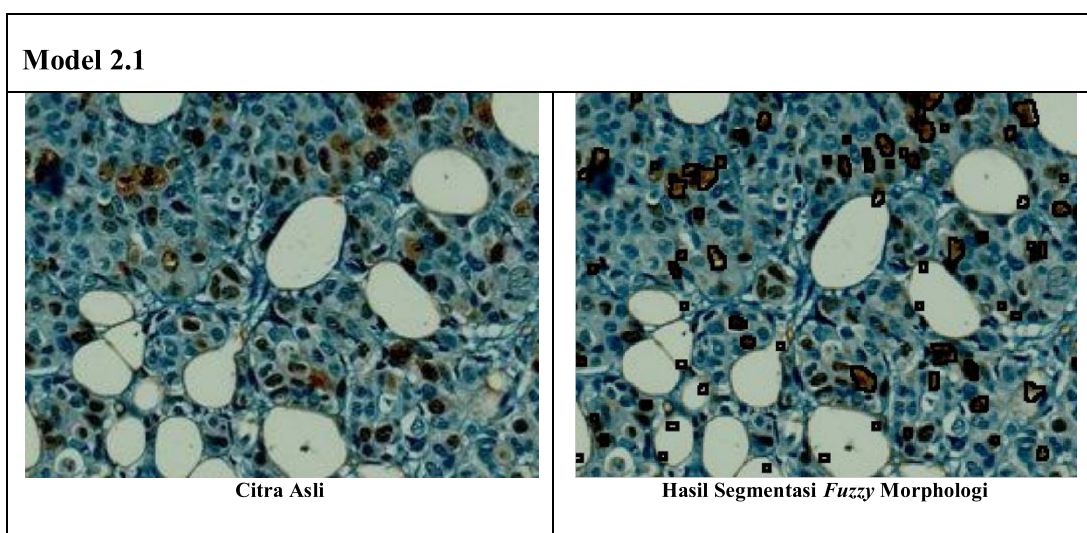
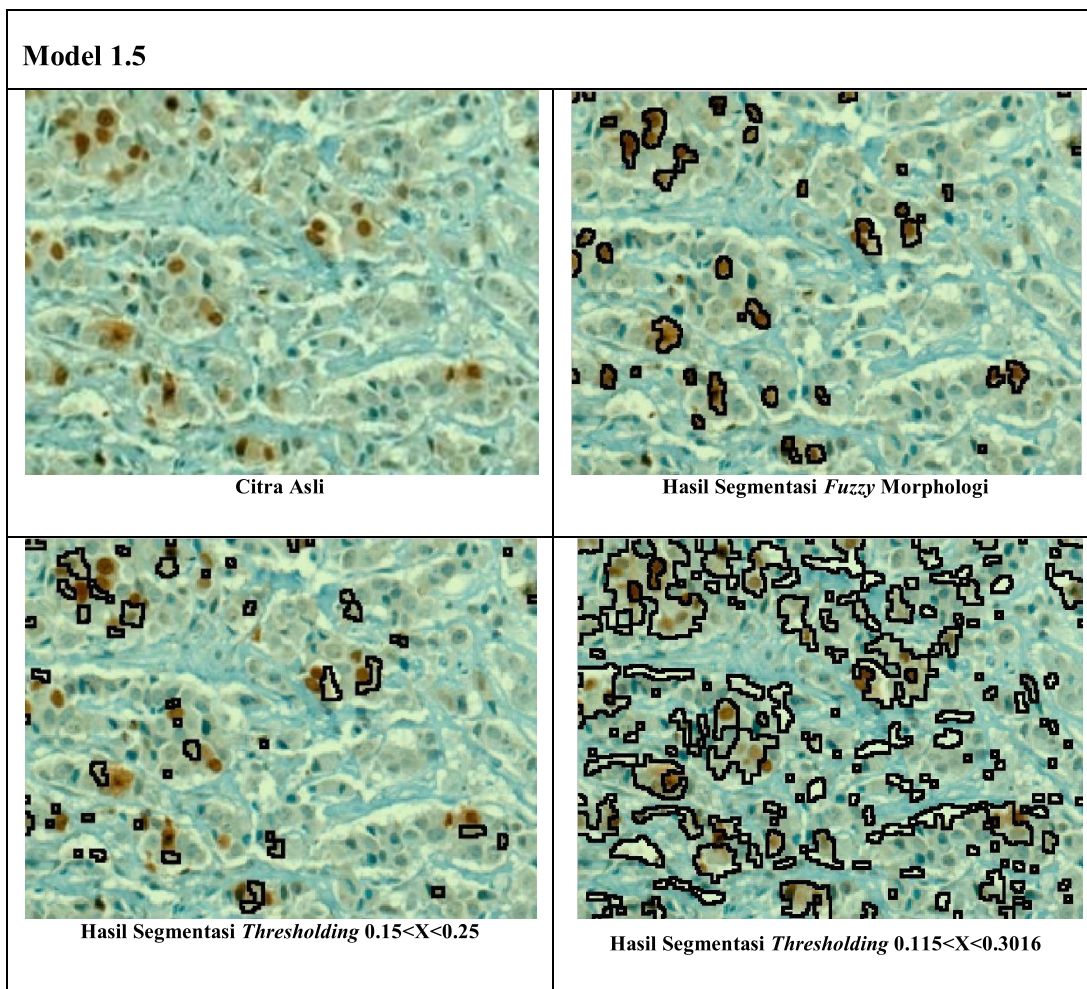
LAMPIRAN A Gambar Hasil Segmentasi

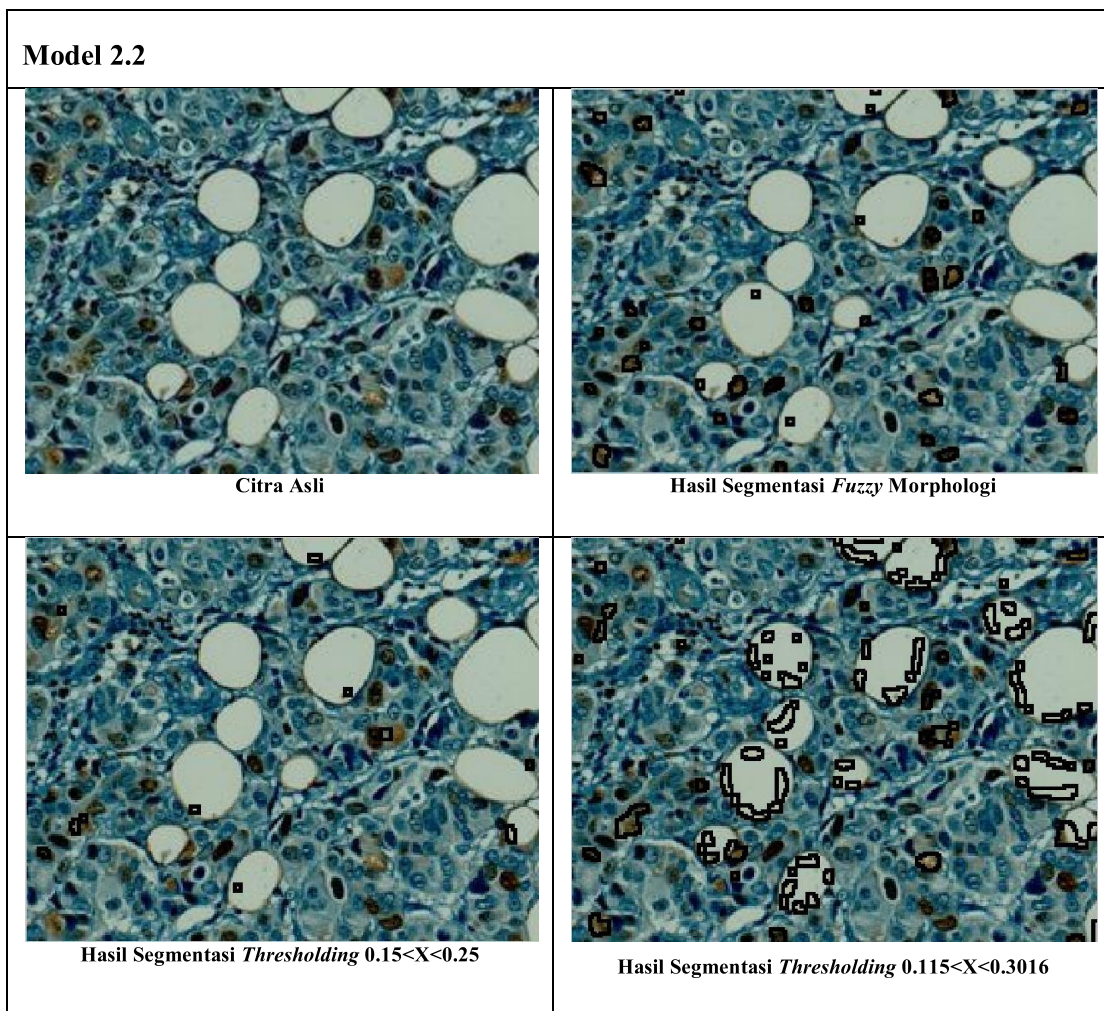
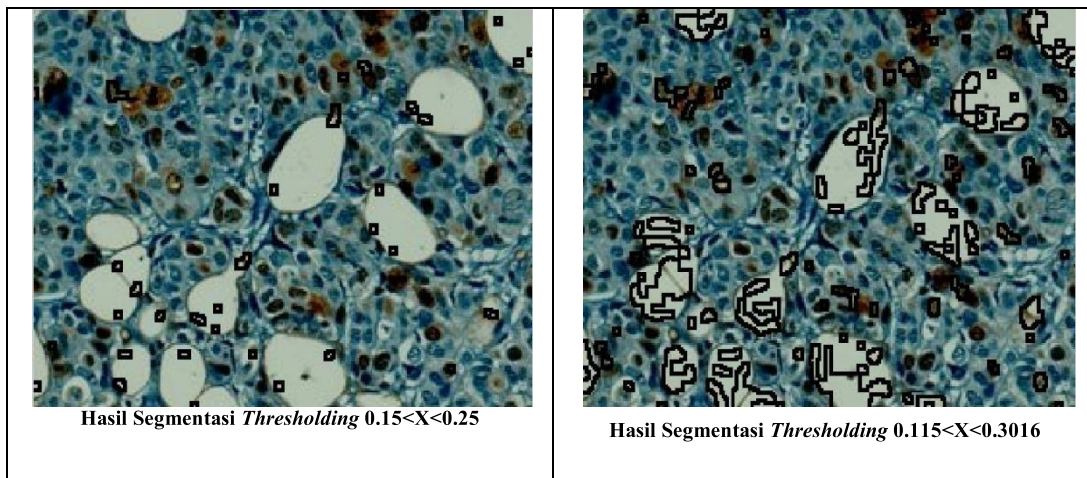
Dibawah ini adalah gambar-gambar hasil proses pendeteksian sel positif kanker payudara. Bagian kiri atas merupakan gambar input yang dimasukkan, bagian kanan atas merupakan gambar hasil segmentasi menggunakan *fuzzy* morfologi, bagian kiri bawah merupakan gambar hasil segmentasi menggunakan *double thresholding* dengan batas bawah 0.15 dan batas atas 0.25, bagian kanan bawah merupakan gambar hasil segmentasi menggunakan *double thresholding* dengan batas bawah 0.115 dan batas atas 0.3016

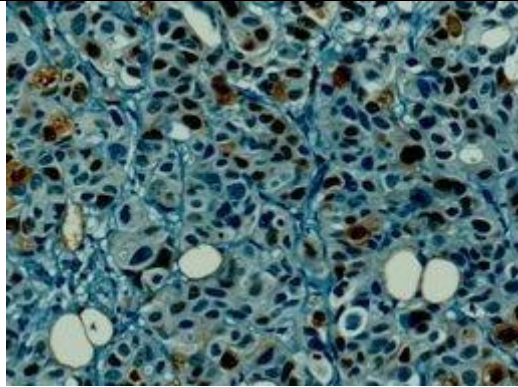




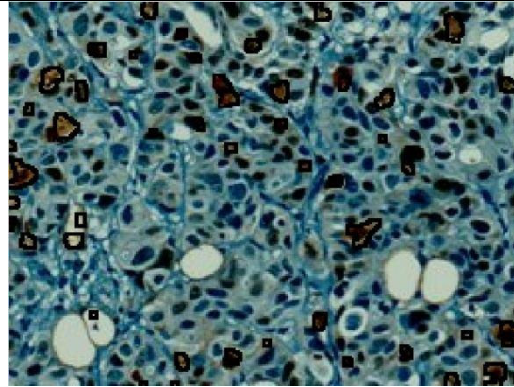
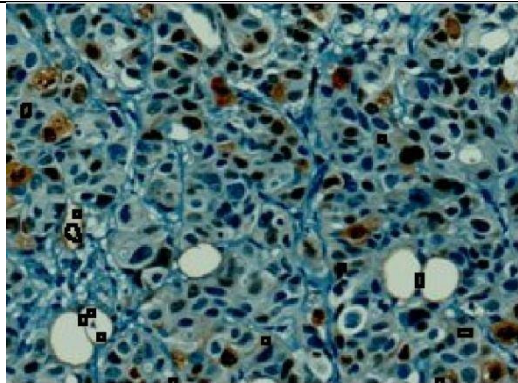
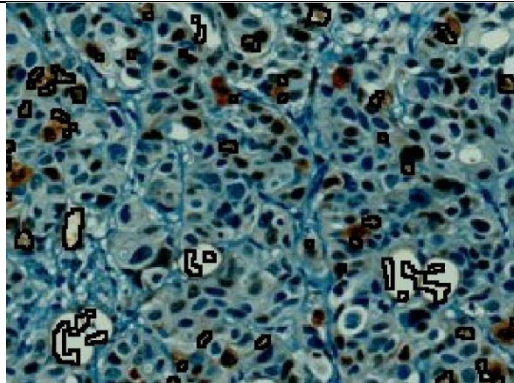
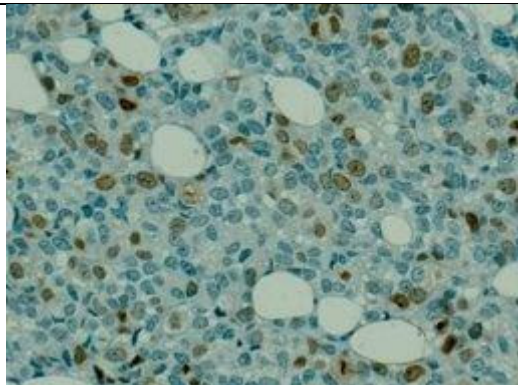




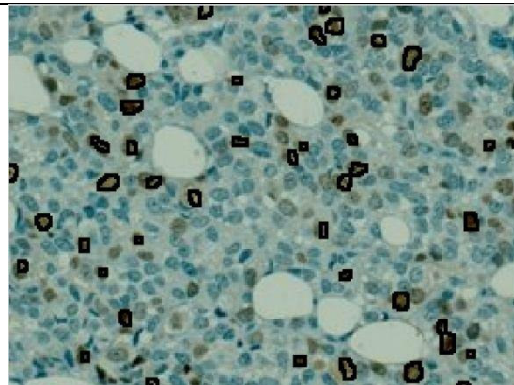


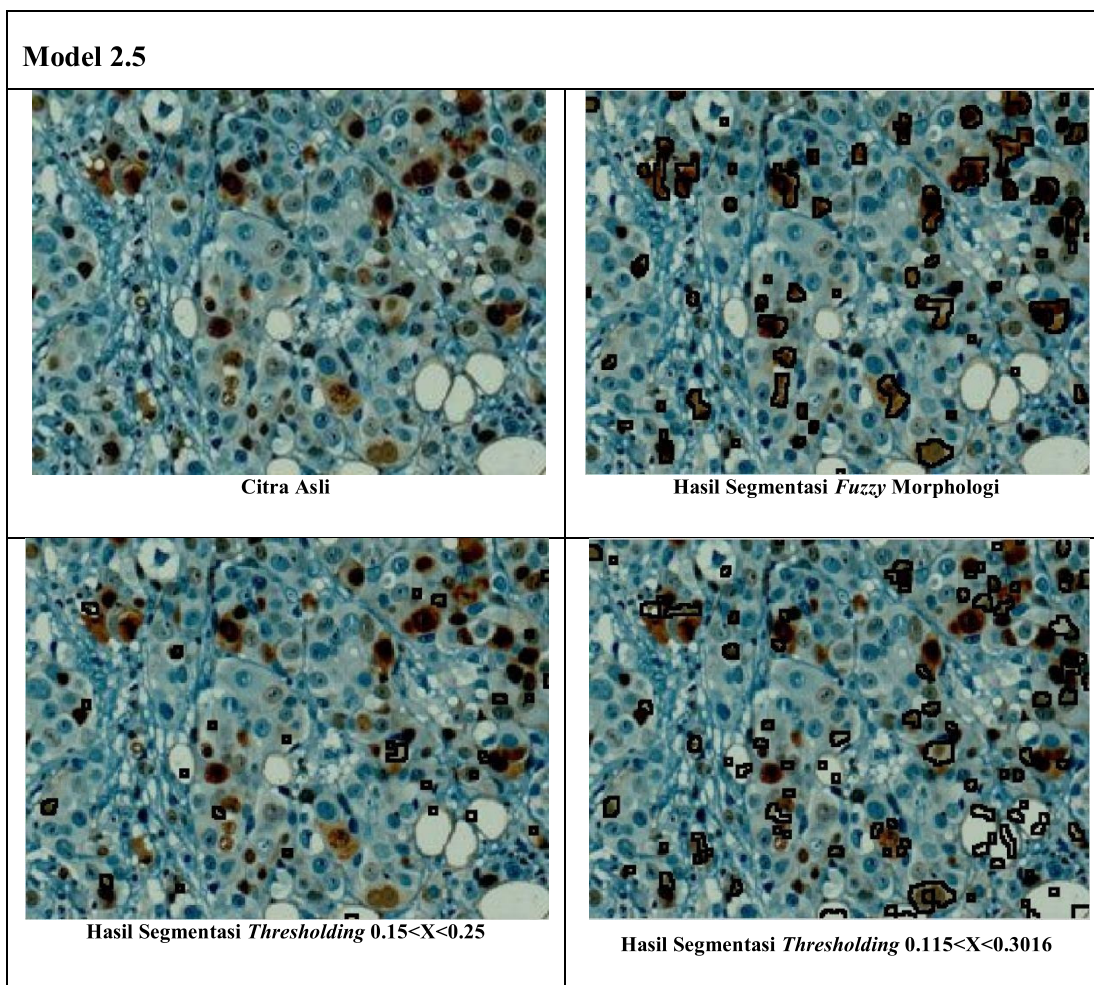
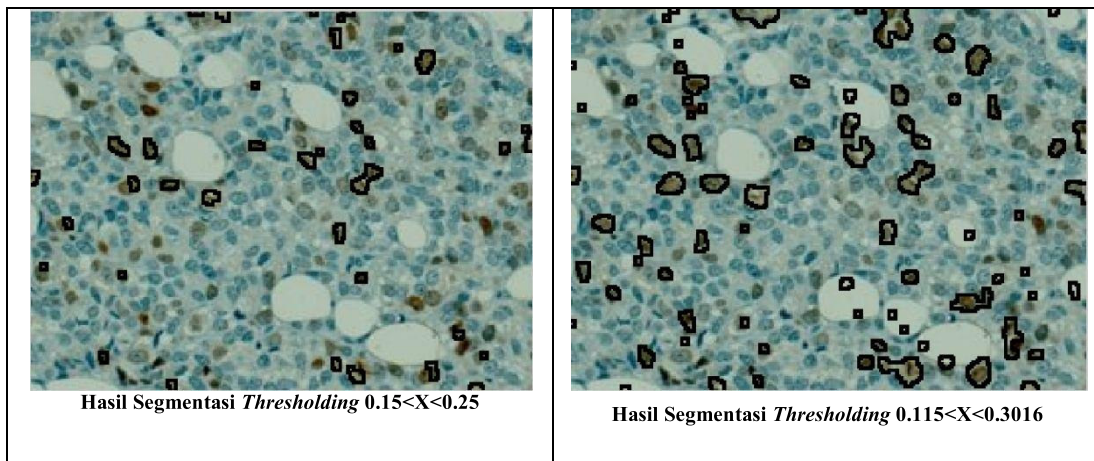
Model 2.3

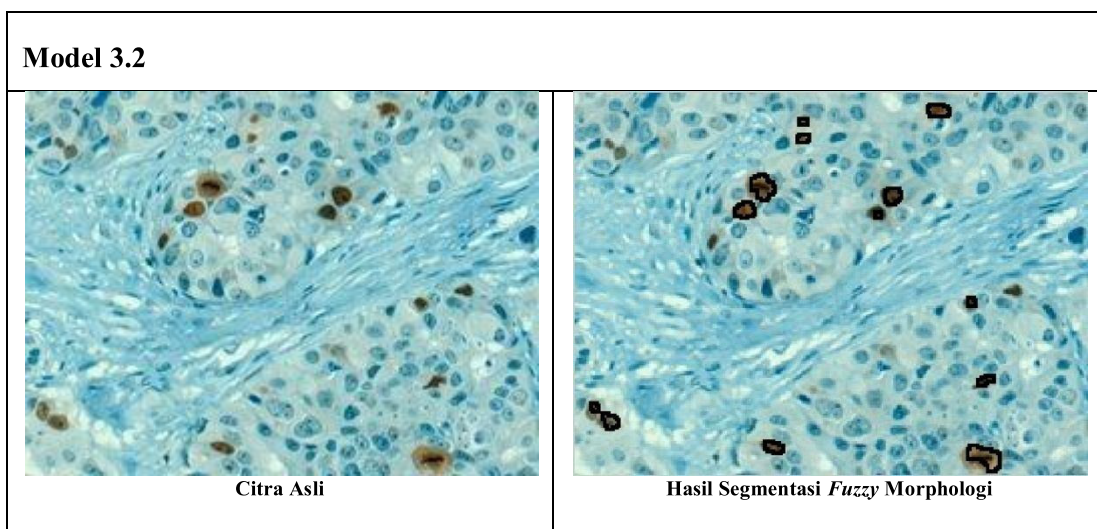
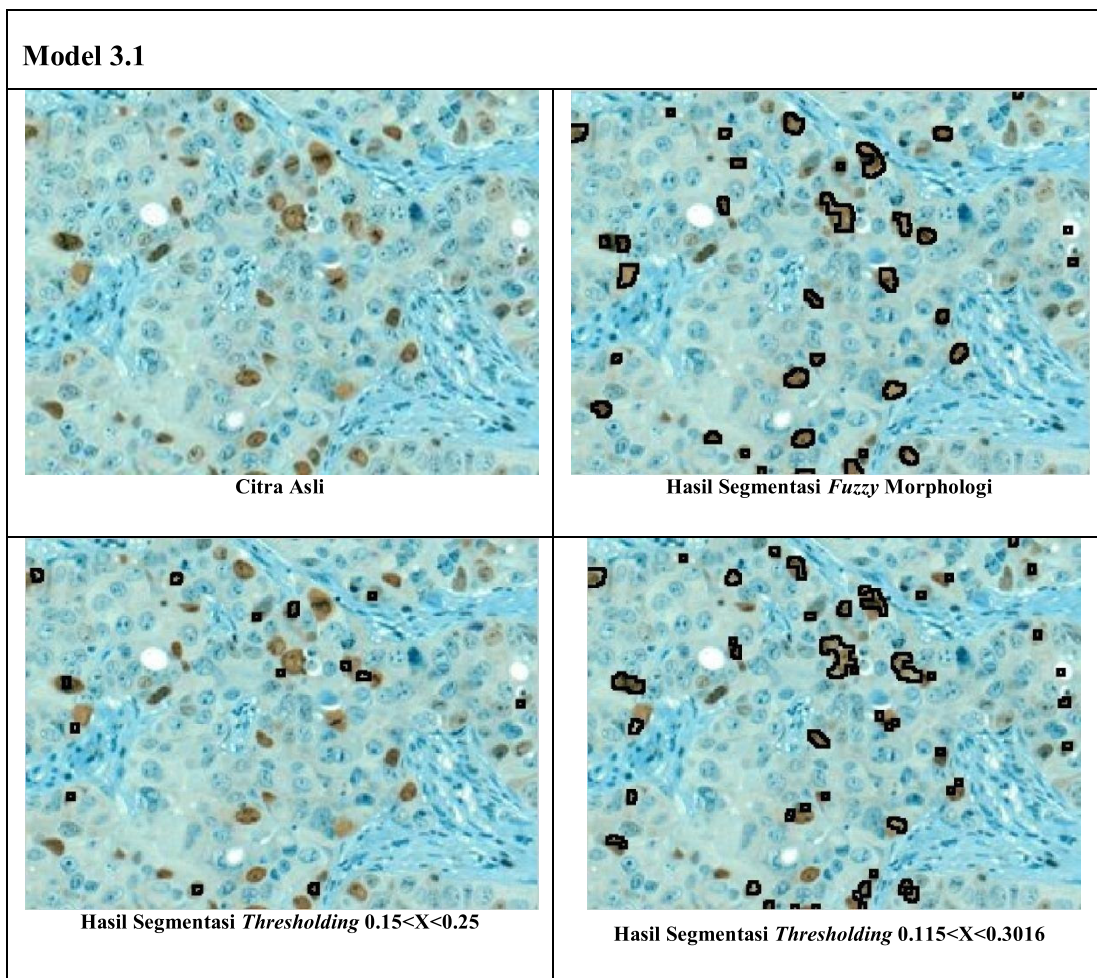
Citra Asli

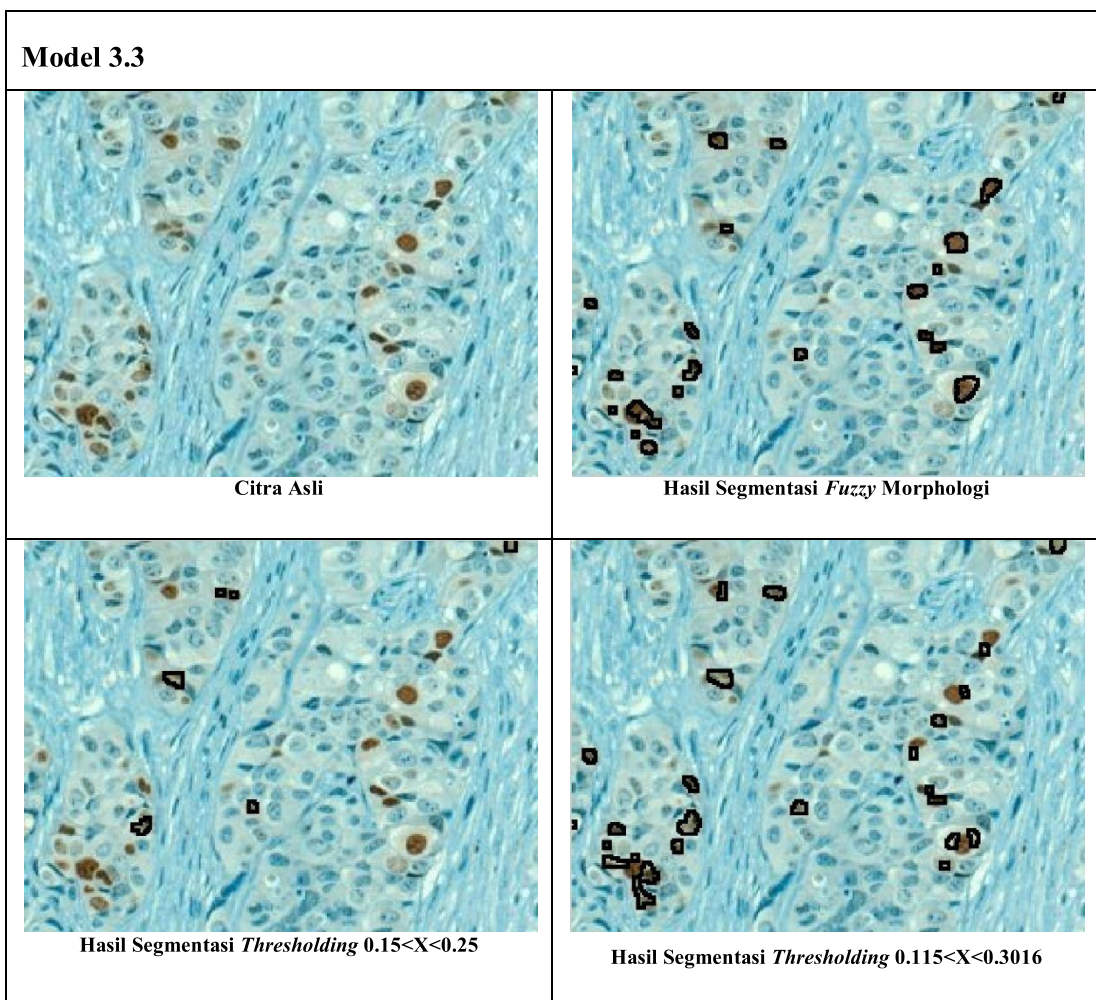
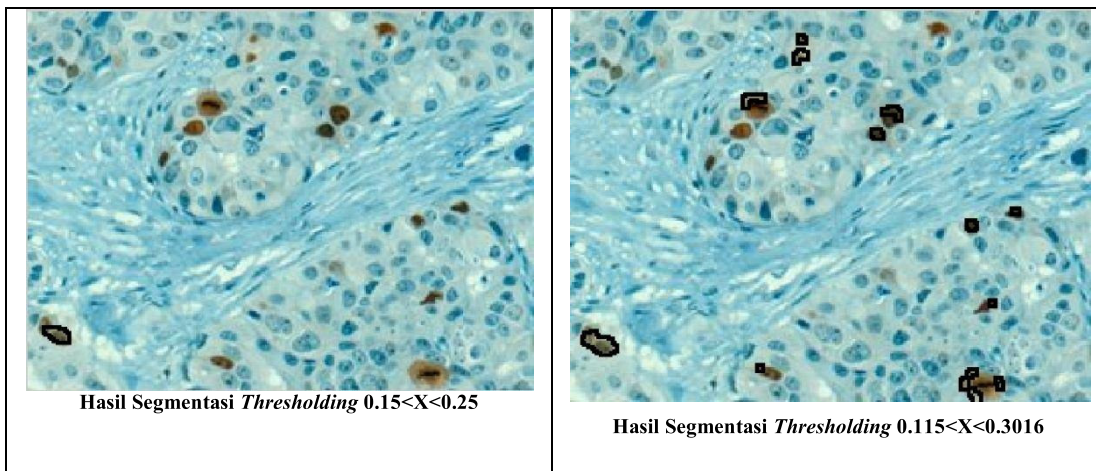
Hasil Segmentasi *Fuzzy Morphologi*Hasil Segmentasi *Thresholding* $0.15 < X < 0.25$ Hasil Segmentasi *Thresholding* $0.115 < X < 0.3016$ **Model 2.4**

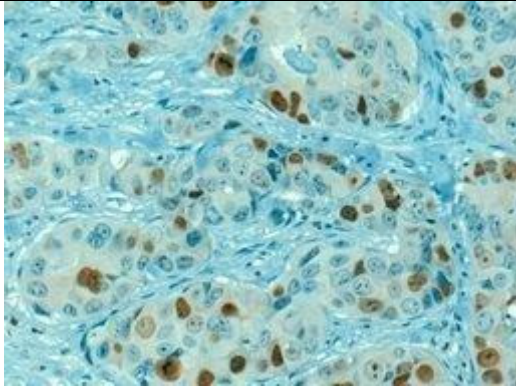
Citra Asli

Hasil Segmentasi *Fuzzy Morphologi*

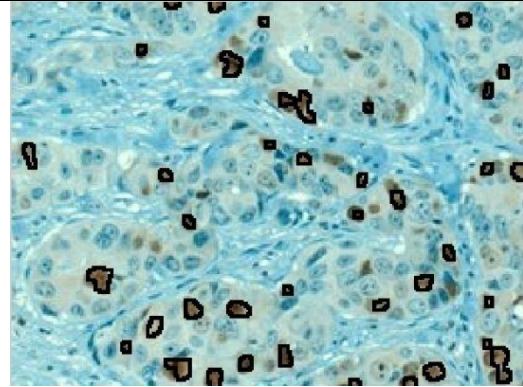
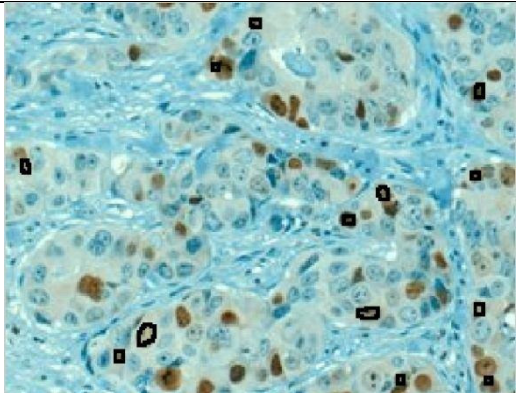
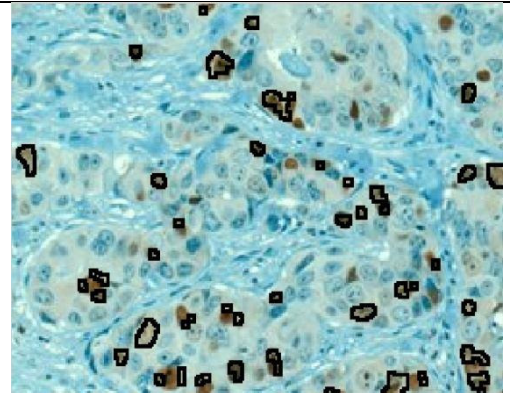
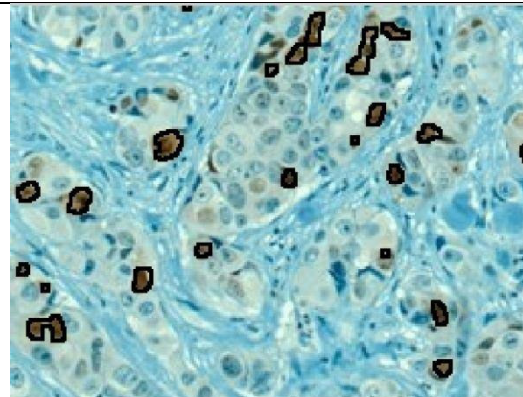
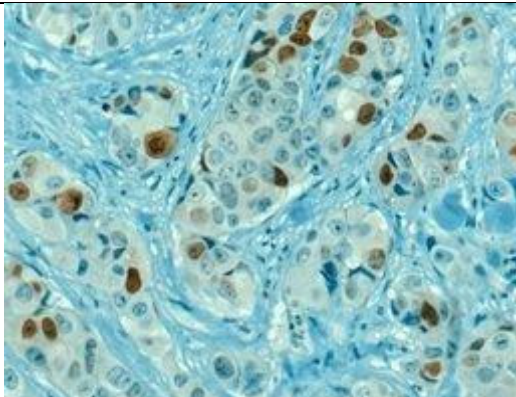


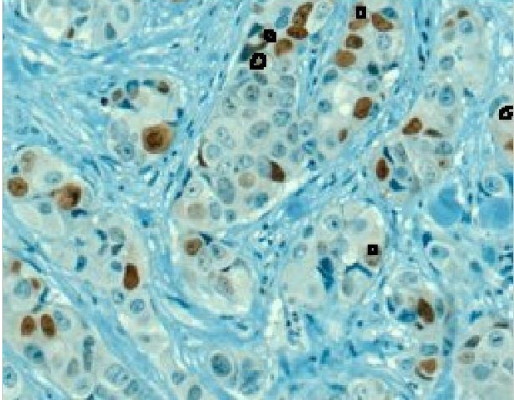
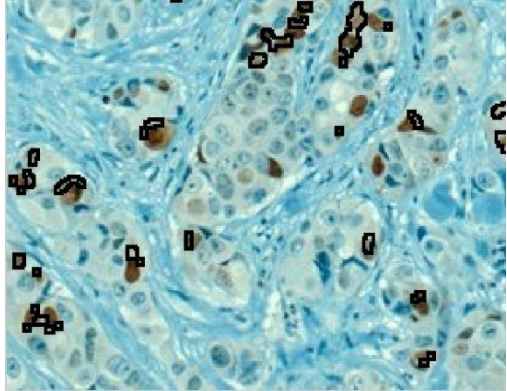


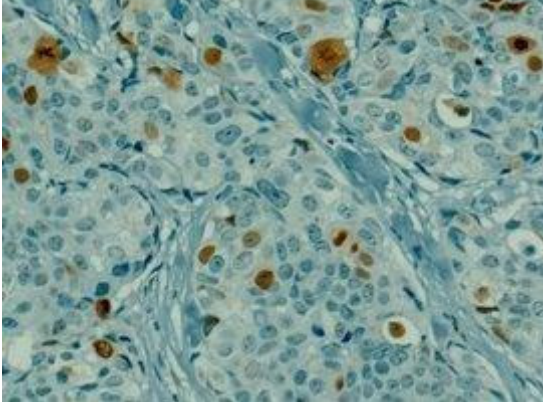
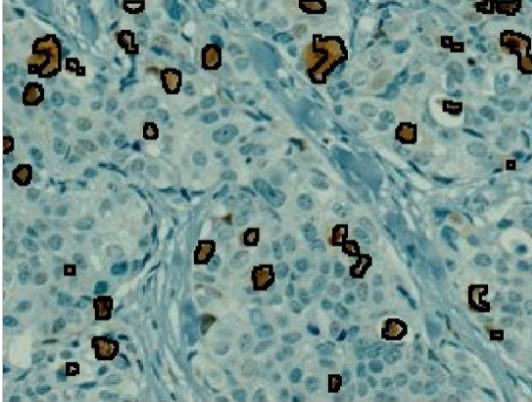
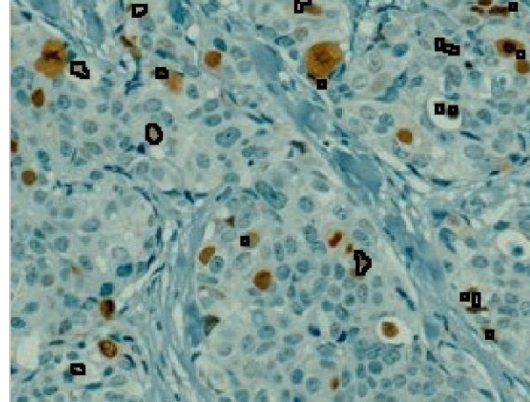
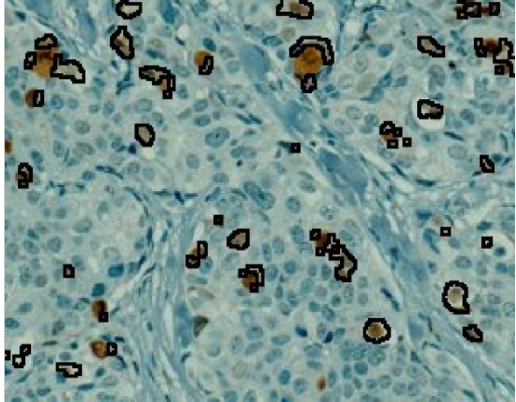


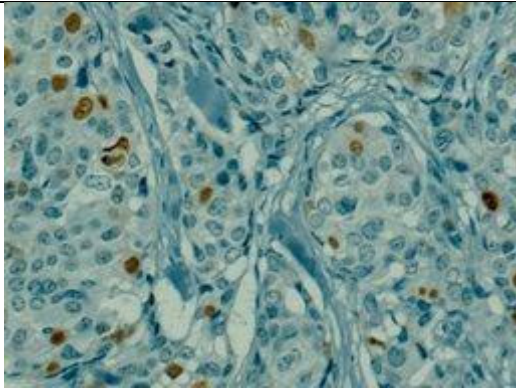
Model 3.4

Citra Asli

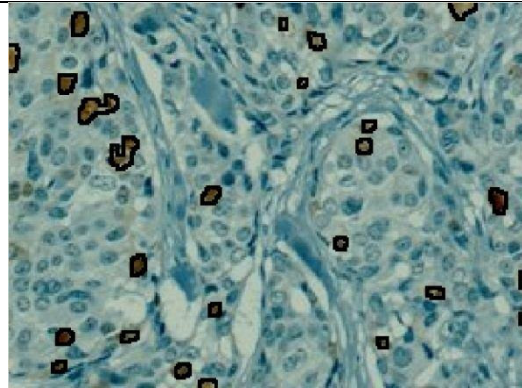
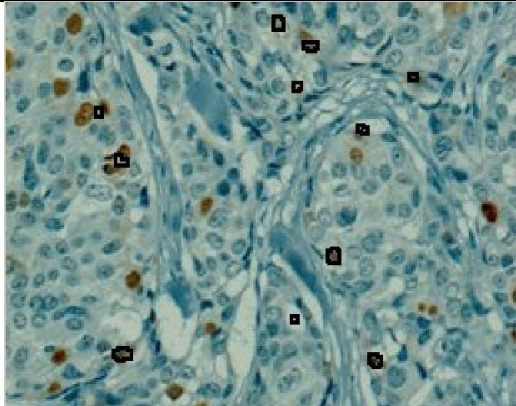
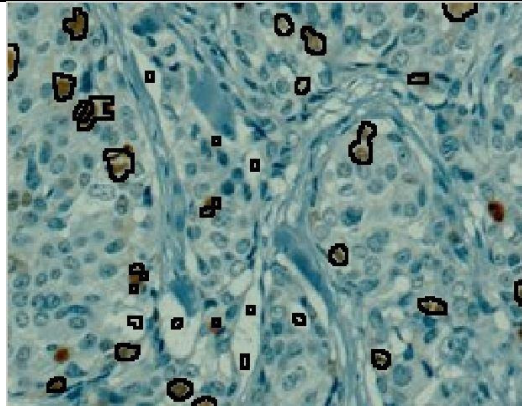
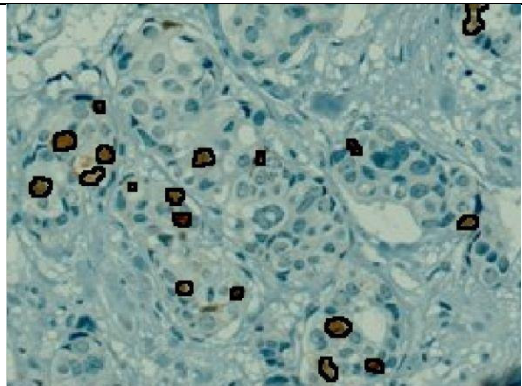
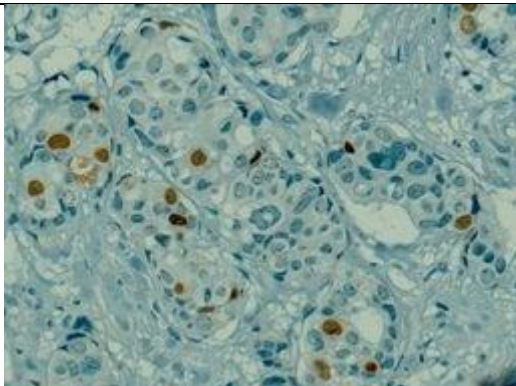
Hasil Segmentasi *Fuzzy Morphologi*Hasil Segmentasi *Thresholding* $0.15 < X < 0.25$ Hasil Segmentasi *Thresholding* $0.115 < X < 0.3016$ **Model 3.5**

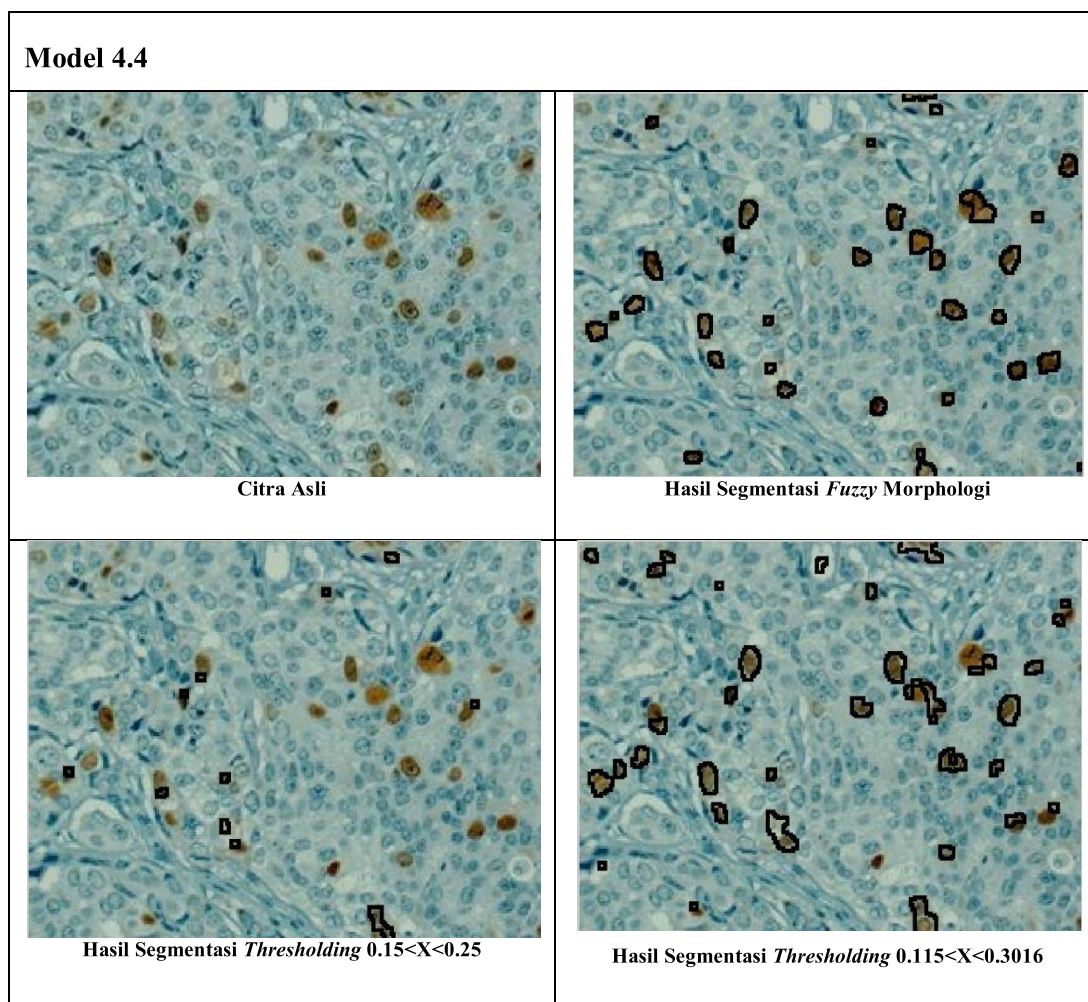
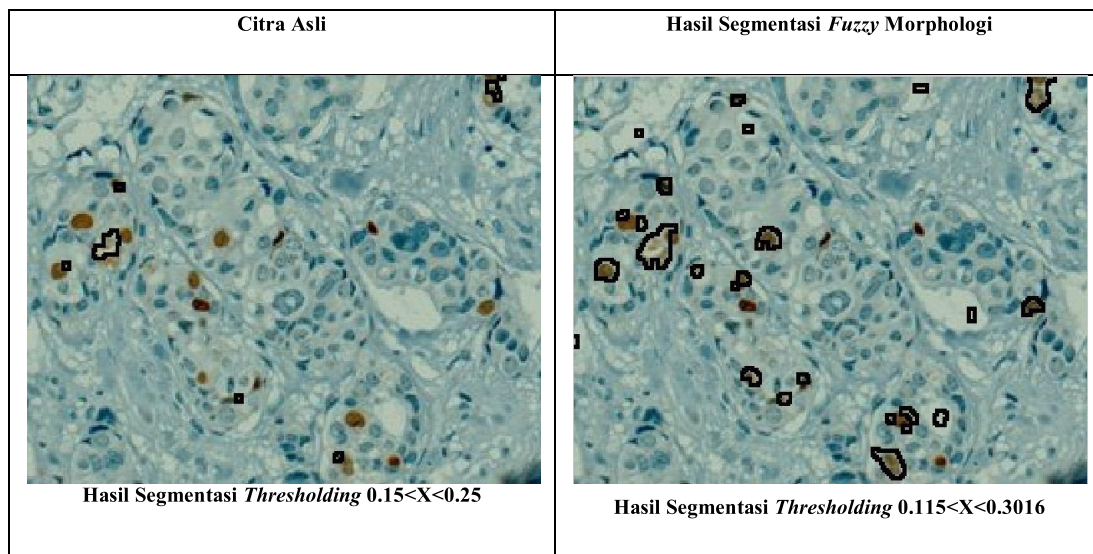
Citra Asli	Hasil Segmentasi <i>Fuzzy Morphologi</i>
 <p data-bbox="354 695 760 720">Hasil Segmentasi <i>Thresholding</i> $0.15 < X < 0.25$</p>	 <p data-bbox="883 695 1321 720">Hasil Segmentasi <i>Thresholding</i> $0.115 < X < 0.3016$</p>

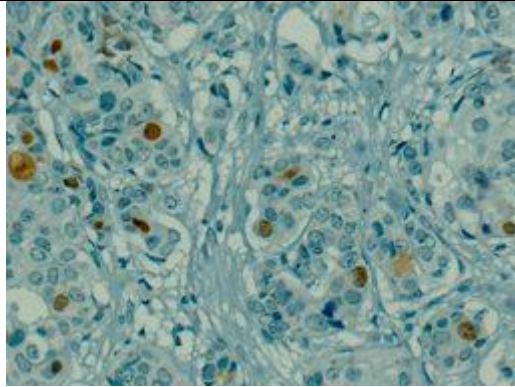
Model 4.1	
 <p data-bbox="521 1325 618 1350">Citra Asli</p>	 <p data-bbox="967 1325 1292 1350">Hasil Segmentasi <i>Fuzzy Morphologi</i></p>
 <p data-bbox="367 1793 773 1818">Hasil Segmentasi <i>Thresholding</i> $0.15 < X < 0.25$</p>	 <p data-bbox="915 1793 1354 1818">Hasil Segmentasi <i>Thresholding</i> $0.115 < X < 0.3016$</p>

Model 4.2

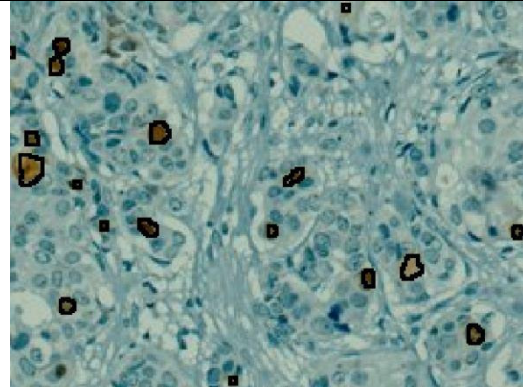
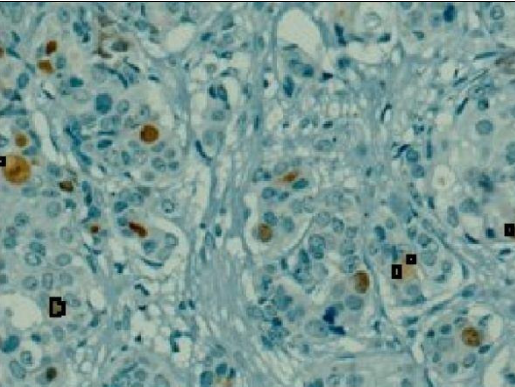
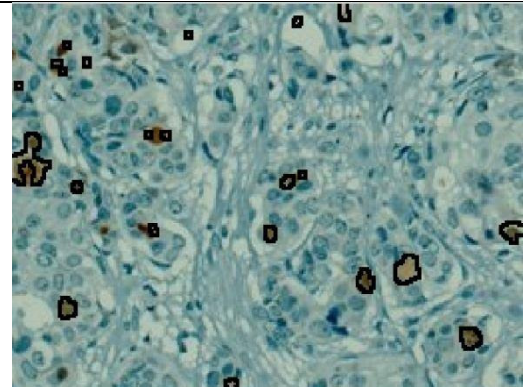
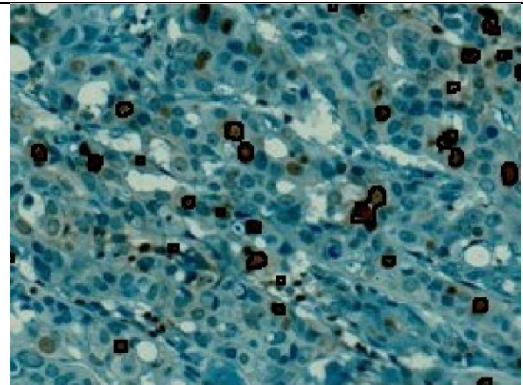
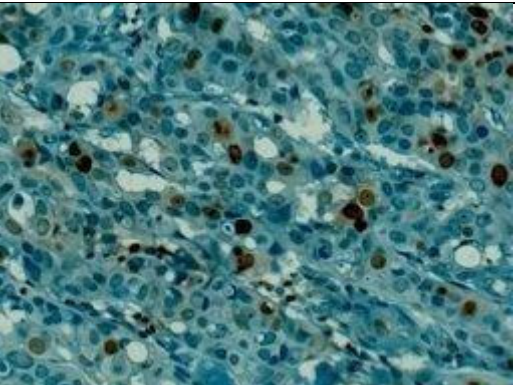
Citra Asli

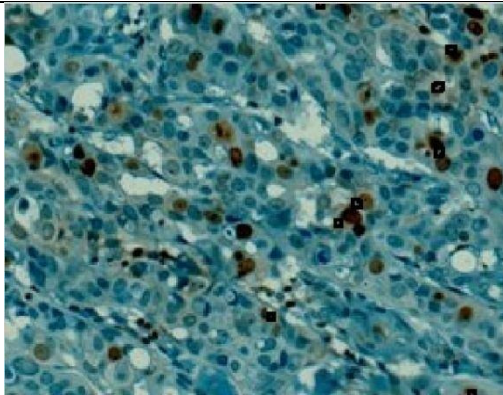
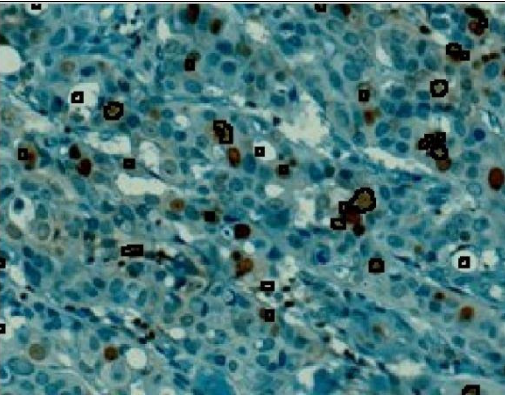
Hasil Segmentasi *Fuzzy Morphologi*Hasil Segmentasi *Thresholding* $0.15 < X < 0.25$ Hasil Segmentasi *Thresholding* $0.115 < X < 0.3016$ **Model 4.3**

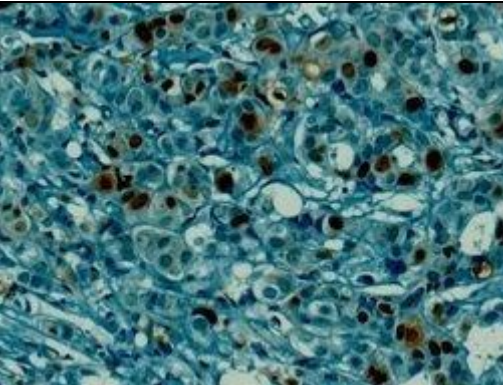
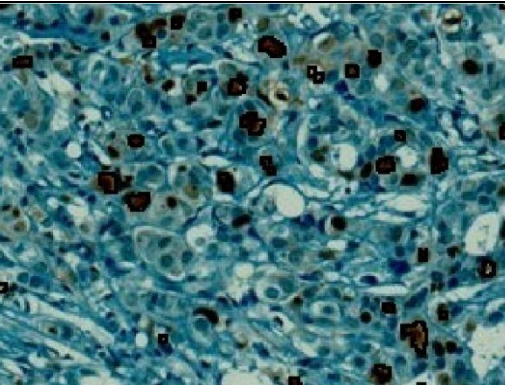
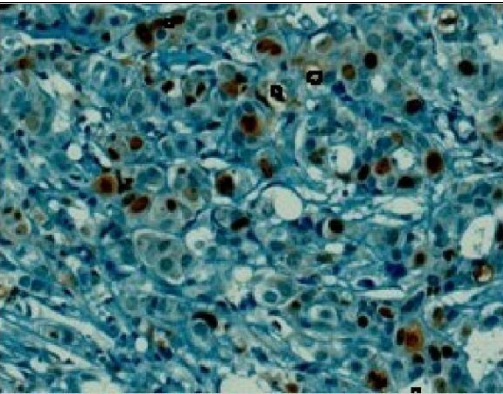
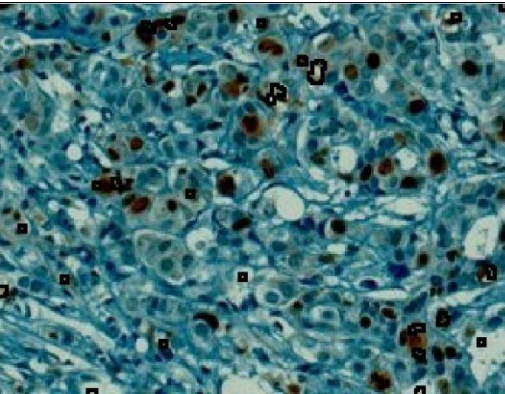


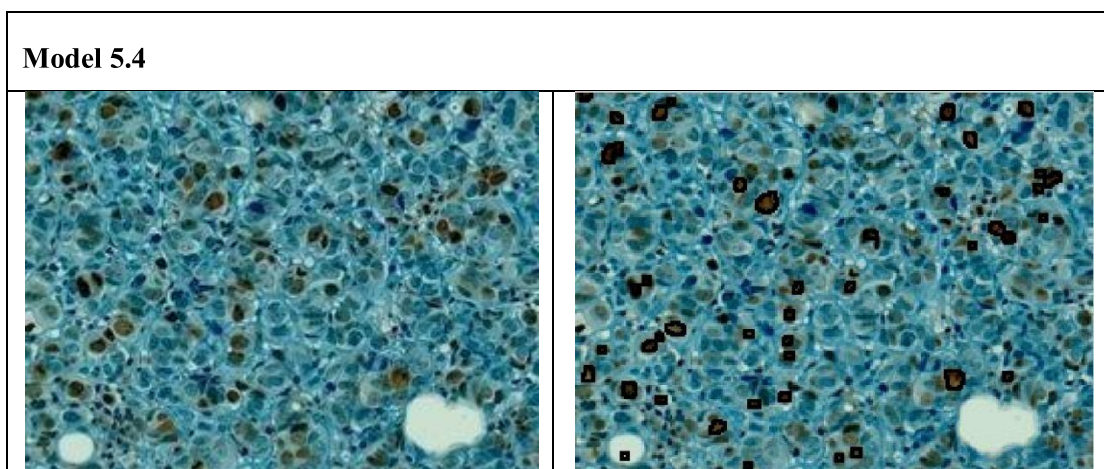
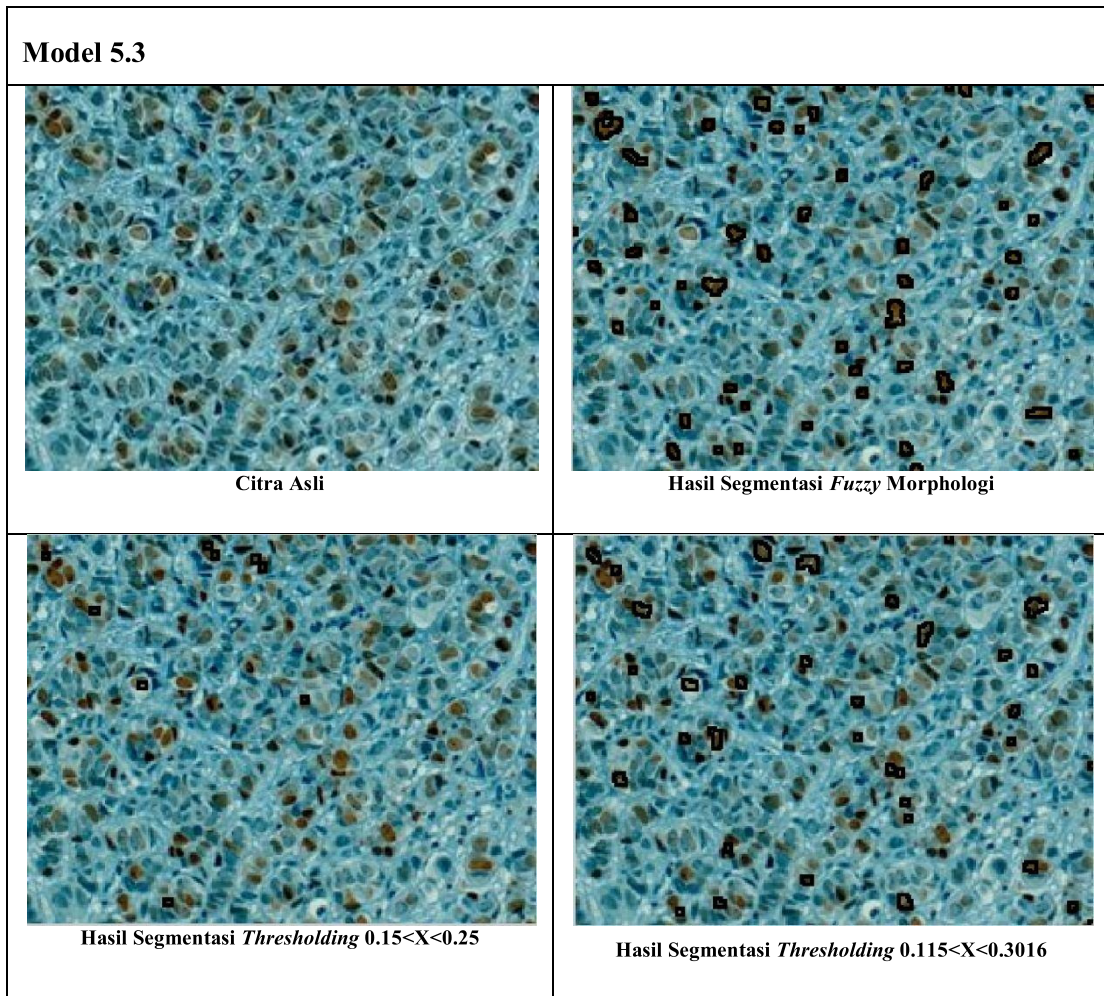
Model 4.5

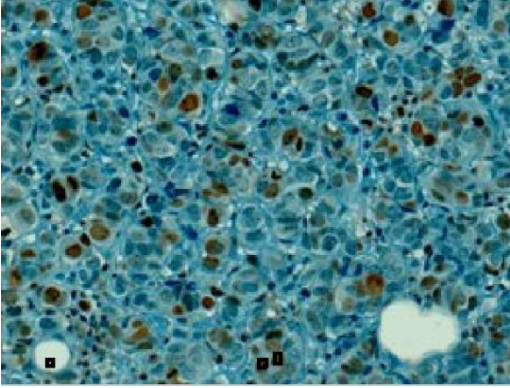
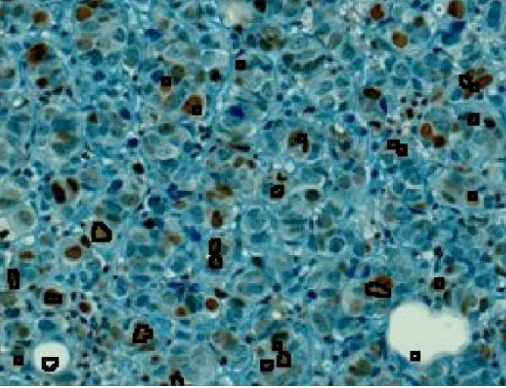
Citra Asli

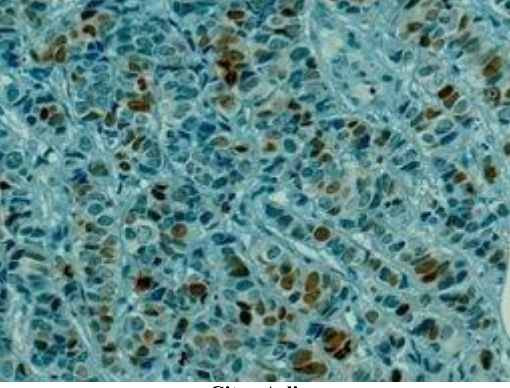
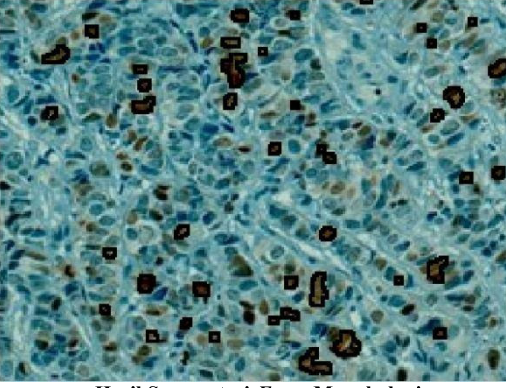
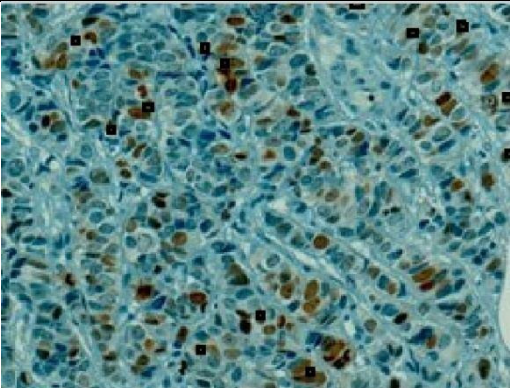
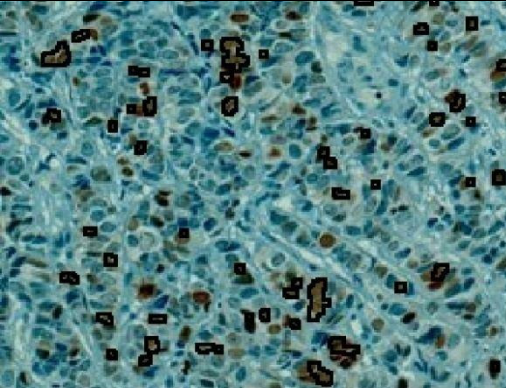
Hasil Segmentasi *Fuzzy Morphologi*Hasil Segmentasi *Thresholding* $0.15 < X < 0.25$ Hasil Segmentasi *Thresholding* $0.115 < X < 0.3016$ **Model 5.1**

Citra Asli	Hasil Segmentasi <i>Fuzzy Morphologi</i>
 <p data-bbox="354 680 756 705">Hasil Segmentasi <i>Thresholding</i> $0.15 < X < 0.25$</p>	 <p data-bbox="883 680 1318 705">Hasil Segmentasi <i>Thresholding</i> $0.115 < X < 0.3016$</p>

Model 5.2	
 <p data-bbox="509 1297 604 1323">Citra Asli</p>	 <p data-bbox="938 1297 1263 1323">Hasil Segmentasi <i>Fuzzy Morphologi</i></p>
 <p data-bbox="354 1751 756 1776">Hasil Segmentasi <i>Thresholding</i> $0.15 < X < 0.25$</p>	 <p data-bbox="883 1751 1318 1776">Hasil Segmentasi <i>Thresholding</i> $0.115 < X < 0.3016$</p>



Citra Asli	Hasil Segmentasi <i>Fuzzy Morphologi</i>
 <p data-bbox="354 682 763 709">Hasil Segmentasi <i>Thresholding</i> $0.15 < X < 0.25$</p>	 <p data-bbox="899 682 1308 709">Hasil Segmentasi <i>Thresholding</i> $0.115 < X < 0.3016$</p>

Model 5.5	
 <p data-bbox="516 1306 600 1333">Citra Asli</p>	 <p data-bbox="899 1306 1308 1333">Hasil Segmentasi <i>Fuzzy Morphologi</i></p>
 <p data-bbox="354 1747 763 1774">Hasil Segmentasi <i>Thresholding</i> $0.15 < X < 0.25$</p>	 <p data-bbox="899 1747 1308 1774">Hasil Segmentasi <i>Thresholding</i> $0.115 < X < 0.3016$</p>