

LAMPIRAN A : DATA HASIL SURVEI**Tabel A.1 Daftar Pertanyaan Survei ke Bagian Humas dan Protokol Pemerintah Kota Depok**

Infrastruktur
1. Apa saja jenis infrastruktur yang ada? Berapa jumlahnya masing-masing?
2. Apa ada ketentuan siapa yang pakai atau tidak? Kalau ada, siapa yang menggunakan masing-masing jenis infrastruktur?
3. Dipakai di kegiatan apa saja? Dan sub bagian apa saja?
4. Apa ada merk/tipe tertentu yang digunakan dan tahun pengadaannya kapan?
Kegiatan
1. Pimpinan kegiatan siapa? Anggotanya siapa saja?
2. Tipe kegiatan? Deskripsi? Tempat dan tanggal dilaksanakan?
Pegawai
1. Apakah jumlah pegawai yang sudah diberikan sudah mencakup keseluruhan pegawai bagian humas dan protokol?
2. Jika sudah, siapa saja yang bekerja di masing-masing sub bagian? Berapa jumlah pegawai di masing-masing sub bagian?

Tabel A.2 Data Kepegawaian Bagian Humas dan Protokol Pemerintah Kota Depok

NO	NAMA	NIP	PANGKAT		JABATAN		SIB. Bagian	MASA KERJA GOL.		MASA KERJA KESI. LAT.		JABATAN TERAKHIR		PENDIDIKAN		TEMPAT TANGGAL LAHIR		USIA (TH)	AGAMA	CATATAN KEPERCAYAAN	JENIS KELAMIN	KET
			GOL	TMT GOL	NAMA	TMT		THN	BLN	THN	BLN	NAMA	ELN/TH	JML. JAM	NAMA	LULUS TH	TK. LAMZAH					
1	Eko Herwanto, AP	010 249 559	III/d	01-10-2005	Kabag. Humas dan Protokol	31-12-2008						ADUM	1988	500	STIAM	2006	S2	Boydali, 11-08-1972	36	Islam	Sekam KERPACAYAN	L
2	Muhammad Fahmi, ST, M.Si	480 126 069	III/c	01-10-2008	Kasubag Humas	31-12-2008									STIAM	2005	S2	Ujung Pandang, 02-02-1974	34	Islam	Bag. Infokom	L
3	Dani Handani, S.STP	010 264 839	III/b	01-10-2008	Kasubag Protokol	31-12-2008						Diklat Pm IV 2003			STPDN	2003	S1	Gombong, 05-02-1980	28	Islam	Dinas Tali Kala	L
4	Rusmini	010 775 817	III/b	01-04-2007	Palaksana	-									SMA	1992	S1A	Gombong, 22-08-1961	47	Islam	D.D.N	P
5	Mhar Restiana	400 033 131	III/b	01-04-2006	Palaksana	-									SMA	1983	SLTA	Balige, 15-11-1962	46	Protestan	Kab. Semarang	P
6	Dra. Hartika	480 123 288	III/b	01-04-2007	Palaksana	-									UNPAD	1992	S1	Bojor, 15-04-1965	43	Islam	Bag. Keuangan	P
7	Ahmad, S.STP	010 267 122	III/a	01-12-2001	Palaksana	-									STPDN	2005	S1	Teluk Betung, 27-04-1981	27	Islam	Bag. Umum	L
8	Fahri Fajar Siddiq, S.STP	010 268 932	III/a	01-12-2002	Palaksana	-									STPDN	2006	S1	Bojor, 22-06-1984	24	Islam	Bag. Umum	L
9	R. Tranto Dwi Handono, SH	480 148 203	III/a	01-04-2006	Palaksana	-									UNITAG	1996	S1	Purwodadi, 31-05-1969	39	Islam	Bag. Umum	L
10	Nasrullah	480 133 066	III/c	01-01-2005	Palaksana	-									BSI	2001	D3	Jakarta, 03-07-1976	30	Islam	Kec. Sukmajaya	L
11	Shilwanati	480 145 936	III/c	01-04-2006	Palaksana	-									UI	2003	D3	Jakarta, 30-03-1982	26	Islam	-	P
12	Ewin Narto	480 119 637	III/b	01-12-2001	Palaksana	-									UI	2008	S1	Depok, 22-06-1979	29	Islam	Bag. Umum	L
13	Reno Susyaringih	480 123 296	III/b	01-12-2002	Palaksana	-									SMA	1992	SLTA	Jakarta, 01-02-1974	34	Islam	Bag. Umum	P
14	Doko Wahyudi	160 033 051	III/a	01-04-1998	Palaksana	-									SD	1972	SD	Jakarta, 10-03-1966	50	Islam	Depnaker	L
15	Riswati	010 632 253	III/a	01-04-1999	Palaksana	-									SD	1971	SD	Purwokerto, 09-05-1968	50	Islam	D.D.N	P
16	Ewan Mindaya	480 126 143	III/a	01-12-2003	Palaksana	-									SMA	1985	SLTA	Bojor, 04-08-1965	43	Islam	-	L
17	Ade Hukmanan	480 148 227	III/a	01-04-2006	Palaksana	-									STM	1997	SLTA	Sulang, 09-04-1981	27	Islam	Bag. Umum	L
18	Abdul Kodir	480 174 487	III/a	01-12-2007	Palaksana	-									SMA	1997	SLTA	Bojor, 25-07-1976	30	Islam	Kec. Sawangan	L

DAFTAR URUT KEPANGKATAN DIJKI PEGAWAI
BAGIAN HUMAS DAN PROTOKOL
SETDA KOTA DEPOK
PERIODE JANUARI 2009

Depok, Januari 2009
Kepala Bagian Humas dan Protokol
Setda Kota Depok

EKOHERWANTO, AP
PENATA TK. I
NIP. 010 249 559

Tabel A.3 Data Kegiatan Bagian Humas dan Protokol Pemerintah Kota Depok

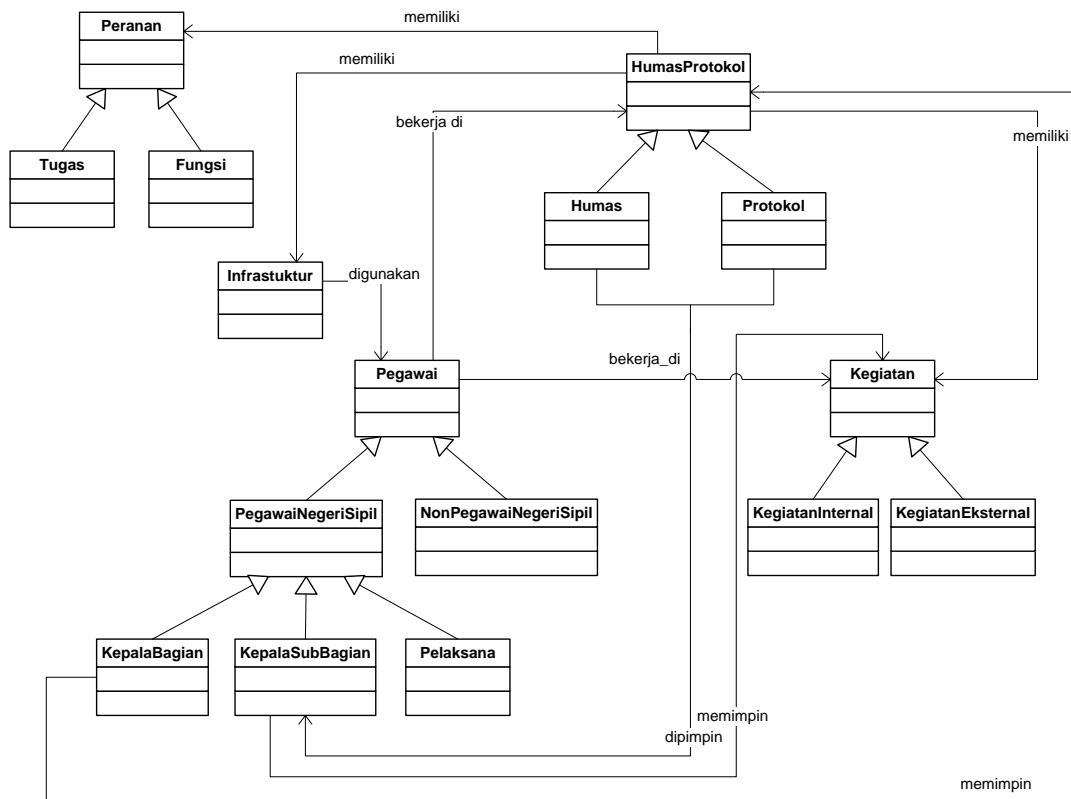
No.	Nama	Tipe	Subbagian	Pemimpin	Anggota	Jenis	Tempat
1	Peliputan Kegiatan	Eksternal	Humas	Muhammad Fahmi, ST. M. SI	Abdul Kodir, Andri Setiawan, Djoko Wahyudi, Nasrullah	Kegiatan Harian	Tentative
2	Talk Show Radio	Eksternal	Humas	Muhammad Fahmi, ST. M. SI	Shiliwati, Nasrullah, Rusdianto	Kegiatan Bulanan	Stasiun Radio
3	Penyediaan Bahan Bacaan	Internal	Humas	Muhammad Fahmi, ST. M. SI	Djoko Wahyudi, Riswati	Kegiatan Harian	Kantor Humas Protokol
4	Pembuatan Kliping Berita	Internal	Humas	Muhammad Fahmi, ST. M. SI	Rusmini, Erwan Mindaaya, Siti Hartika, Andri Setiawan	Kegiatan Harian	Kantor Humas Protokol
5	Pembuatan Advertorial Pembangunan Depok	Internal	Humas	Muhammad Fahmi, ST. M. SI	Nasrullah, Shiliwati, Rusdianto	Kegiatan Mingguan/Bulanan	Kantor Humas Protokol
6	Pelayanan Pengaduan	Internal	Humas	Muhammad Fahmi, ST. M. SI	Hartika, Fathir Fajar Sidik, Nasrullah, Rusmini, Minar Rosdiana	Kegiatan Harian	Kantor Humas Protokol
7	Keprotokolian Pemkot Depok	Eksternal	Protokol	Dani Hamdani, S. STP	Retno Sustianingsih, Alfia Budiwati, Fajar Adiputra, Fathir Fajar Sidik, Erwin Narto, Ade Hukmawan, Ahmad, Fajar Adi Putra	Kegiatan Mingguan/Bulanan	
8	Pembuatan Buku Sambutan Walikota dan Wakil	Internal	Protokol	Dani Hamdani, S. STP	Fathir Fajar Sidik, Nasrullah, Ade Hukmawan, Retno Sustianingsih	Kegiatan Harian	Kantor Humas Protokol
9	Pengelolaan Media Internet	Internal	Protokol	Dani Hamdani, S. STP	Rusdianto, Fathir Fajar Sidik, Wewen Sajali, Nasrullah, Rusmini		

Data Kegiatan Bagian Humas Protokol Pemerintah Kota Depok

Tabel A.4 Data Infrastruktur Bagian Humas dan Protokol Pemerintah Kota Depok

Data Infrastruktur Bagian Humas Protokol Pemerintah Kota Depok

No.	Nama	Jumlah	Pengguna
1	Handycam	4	Abdul Kodir
2	Komputer	14	
3	Kamera Foto	4	Abdul Kodir
4	Mobil	2	Kepala Bagian, Tim Liputan dan Protokol
5	Motor	5	Nasrullah, Abdul Kodir, Djoko Wahyudi, Rusdianto, Wewen Sajali



Gambar A.1 Ontologi yang Diajukan ke Bagian Humas Protokol Pemerintah Kota Depok

LAMPIRAN B : KODE ONTOLOGI

```

<?xml version="1.0"?>
<rdf:RDF
  xmlns:rdf="http://www.w3.org/1999/02/22-rdf-syntax-ns#"
  xmlns:owl="http://www.w3.org/2002/07/owl#"
  xmlns:xsd="http://www.w3.org/2001/XMLSchema#"
  xmlns="http://localhost:8080/portalHumasProtokol/ontology-01#"
  xmlns:hup="http://localhost:8080/portalHumasProtokol/ontology#"
  xmlns:rdfs="http://www.w3.org/2000/01/rdf-schema#"
  xml:base="http://localhost:8080/portalHumasProtokol/ontology-01">
  <owl:Ontology rdf:about="">
    <owl:versionInfo rdf:datatype="http://www.w3.org/2001/XMLSchema#string"
    ></owl:versionInfo>
  </owl:Ontology>
  <owl:Class rdf:about="http://localhost:8080/portalHumasProtokol/ontology#Pelaksana">
    <owl:disjointWith>
      <owl:Class
rdf:about="http://localhost:8080/portalHumasProtokol/ontology#KepalaSubBagian"/>
    </owl:disjointWith>
    <owl:disjointWith>
      <owl:Class
rdf:about="http://localhost:8080/portalHumasProtokol/ontology#KepalaBagian"/>
    </owl:disjointWith>
    <rdfs:subClassOf>
      <owl:Class
rdf:about="http://localhost:8080/portalHumasProtokol/ontology#PegawaiNegeriSipil"/>
    </rdfs:subClassOf>
    <rdfs:label rdf:datatype="http://www.w3.org/2001/XMLSchema#string"
    >Pelaksana</rdfs:label>
  </owl:Class>
  <owl:Class
rdf:about="http://localhost:8080/portalHumasProtokol/ontology#Infrastruktur">
    <rdfs:label rdf:datatype="http://www.w3.org/2001/XMLSchema#string"
    >Infrastruktur</rdfs:label>
    <rdfs:subClassOf>
      <owl:Restriction>
        <owl:onProperty>
          <owl:ObjectProperty
rdf:about="http://localhost:8080/portalHumasProtokol/ontology#digunakan_di"/>
        </owl:onProperty>

```

```

    <owl:someValuesFrom>
      <owl:Class
rdf:about="http://localhost:8080/portalHumasProtokol/ontology#Kegiatan"/>
    </owl:someValuesFrom>
  </owl:Restriction>
</rdfs:subClassOf>
<rdfs:subClassOf>
  <owl:Restriction>
    <owl:someValuesFrom>
      <owl:Class
rdf:about="http://localhost:8080/portalHumasProtokol/ontology#Pegawai"/>
    </owl:someValuesFrom>
    <owl:onProperty>
      <owl:ObjectProperty
rdf:about="http://localhost:8080/portalHumasProtokol/ontology#digunakan_oleh"/>
    </owl:onProperty>
  </owl:Restriction>
</rdfs:subClassOf>
<rdfs:subClassOf rdf:resource="http://www.w3.org/2002/07/owl#Thing"/>
<owl:disjointWith>
  <owl:Class
rdf:about="http://localhost:8080/portalHumasProtokol/ontology#Kegiatan"/>
</owl:disjointWith>
<owl:disjointWith>
  <owl:Class
rdf:about="http://localhost:8080/portalHumasProtokol/ontology#Peranan"/>
</owl:disjointWith>
<owl:disjointWith>
  <owl:Class
rdf:about="http://localhost:8080/portalHumasProtokol/ontology#HumasProtokol"/>
</owl:disjointWith>
<owl:disjointWith>
  <owl:Class
rdf:about="http://localhost:8080/portalHumasProtokol/ontology#Pegawai"/>
</owl:disjointWith>
</owl:Class>
<owl:Class rdf:about="http://localhost:8080/portalHumasProtokol/ontology#Tugas">
  <owl:disjointWith>
    <owl:Class
rdf:about="http://localhost:8080/portalHumasProtokol/ontology#Fungsi"/>
  </owl:disjointWith>
<rdfs:subClassOf>
  <owl:Class
rdf:about="http://localhost:8080/portalHumasProtokol/ontology#Peranan"/>

```

```

</rdfs:subClassOf>
<rdfs:label rdf:datatype="http://www.w3.org/2001/XMLSchema#string"
>Tugas</rdfs:label>
</owl:Class>
<owl:Class
rdf:about="http://localhost:8080/portalHumasProtokol/ontology#HumasProtokol">
  <rdfs:label rdf:datatype="http://www.w3.org/2001/XMLSchema#string"
>HumasProtokol</rdfs:label>
  <rdfs:subClassOf>
    <owl:Restriction>
      <owl:onProperty>
        <owl:ObjectProperty
rdf:about="http://localhost:8080/portalHumasProtokol/ontology#memiliki"/>
        </owl:onProperty>
        <owl:allValuesFrom>
          <owl:Class
rdf:about="http://localhost:8080/portalHumasProtokol/ontology#Kegiatan"/>
          </owl:allValuesFrom>
        </owl:Restriction>
      </rdfs:subClassOf>
      <owl:disjointWith>
        <owl:Class
rdf:about="http://localhost:8080/portalHumasProtokol/ontology#Peranan"/>
        </owl:disjointWith>
      <rdfs:subClassOf>
        <owl:Restriction>
          <owl:allValuesFrom>
            <owl:Class
rdf:about="http://localhost:8080/portalHumasProtokol/ontology#Peranan"/>
            </owl:allValuesFrom>
          <owl:onProperty>
            <owl:ObjectProperty
rdf:about="http://localhost:8080/portalHumasProtokol/ontology#memiliki_per"/>
            </owl:onProperty>
          </owl:Restriction>
        </rdfs:subClassOf>
        <rdfs:subClassOf>
          <owl:Restriction>
            <owl:allValuesFrom>
              <owl:Class
rdf:about="http://localhost:8080/portalHumasProtokol/ontology#KepalaBagian"/>
              </owl:allValuesFrom>
            <owl:onProperty>

```

```

    <owl:ObjectProperty
rdf:about="http://localhost:8080/portalHumasProtokol/ontology#dipimpin"/>
    </owl:onProperty>
    </owl:Restriction>
  </rdfs:subClassOf>
  <owl:disjointWith>
    <owl:Class
rdf:about="http://localhost:8080/portalHumasProtokol/ontology#Pegawai"/>
    </owl:disjointWith>
    <owl:disjointWith
rdf:resource="http://localhost:8080/portalHumasProtokol/ontology#Infrastruktur"/>
    <rdfs:subClassOf rdf:resource="http://www.w3.org/2002/07/owl#Thing"/>
    <owl:disjointWith>
    <owl:Class
rdf:about="http://localhost:8080/portalHumasProtokol/ontology#Kegiatan"/>
    </owl:disjointWith>
    <rdfs:subClassOf>
    <owl:Restriction>
    <owl:onProperty>
    <owl:ObjectProperty
rdf:about="http://localhost:8080/portalHumasProtokol/ontology#mempekerjakan"/>
    </owl:onProperty>
    <owl:allValuesFrom>
    <owl:Class
rdf:about="http://localhost:8080/portalHumasProtokol/ontology#Pegawai"/>
    </owl:allValuesFrom>
    </owl:Restriction>
  </rdfs:subClassOf>
</owl:Class>
  <owl:Class
rdf:about="http://localhost:8080/portalHumasProtokol/ontology#PegawaiNegeriSipil">
  <owl:disjointWith>
  <owl:Class
rdf:about="http://localhost:8080/portalHumasProtokol/ontology#NonPegawaiNegeriSipil"/>
  </owl:disjointWith>
  <rdfs:label rdf:datatype="http://www.w3.org/2001/XMLSchema#string"
>PegawaiNegeriSipil</rdfs:label>
  <rdfs:subClassOf>
  <owl:Class
rdf:about="http://localhost:8080/portalHumasProtokol/ontology#Pegawai"/>
  </rdfs:subClassOf>
</owl:Class>
  <owl:Class
rdf:about="http://localhost:8080/portalHumasProtokol/ontology#NonPegawaiNegeriSipil">

```



```

    <owl:disjointWith
rdf:resource="http://localhost:8080/portalHumasProtokol/ontology#PegawaiNegeriSipil"/>
    <rdfs:label rdf:datatype="http://www.w3.org/2001/XMLSchema#string"
>NonPegawaiNegeriSipil</rdfs:label>
    <rdfs:subClassOf>
        <owl:Class
rdf:about="http://localhost:8080/portalHumasProtokol/ontology#Pegawai"/>
        </rdfs:subClassOf>
    </owl:Class>
    <owl:Class
rdf:about="http://localhost:8080/portalHumasProtokol/ontology#KepalaSubBagian">
        <owl:disjointWith
rdf:resource="http://localhost:8080/portalHumasProtokol/ontology#Pelaksana"/>
        <owl:disjointWith>
            <owl:Class
rdf:about="http://localhost:8080/portalHumasProtokol/ontology#KepalaBagian"/>
            </owl:disjointWith>
            <rdfs:label rdf:datatype="http://www.w3.org/2001/XMLSchema#string"
>KepalaSubBagian</rdfs:label>
            <rdfs:subClassOf
rdf:resource="http://localhost:8080/portalHumasProtokol/ontology#PegawaiNegeriSipil"/>
            <rdfs:subClassOf>
                <owl:Restriction>
                    <owl:allValuesFrom>
                        <owl:Class
rdf:about="http://localhost:8080/portalHumasProtokol/ontology#Humas"/>
                        </owl:allValuesFrom>
                    <owl:onProperty>
                        <owl:ObjectProperty
rdf:about="http://localhost:8080/portalHumasProtokol/ontology#memimpin"/>
                        </owl:onProperty>
                    </owl:Restriction>
                </rdfs:subClassOf>
            <rdfs:subClassOf>
                <owl:Restriction>
                    <owl:onProperty>
                        <owl:ObjectProperty
rdf:about="http://localhost:8080/portalHumasProtokol/ontology#memimpin"/>
                        </owl:onProperty>
                    <owl:allValuesFrom>
                        <owl:Class
rdf:about="http://localhost:8080/portalHumasProtokol/ontology#Protokol"/>
                        </owl:allValuesFrom>
                    </owl:Restriction>
                </rdfs:subClassOf>
            </owl:Class>
        </owl:Class>
    </owl:Class>

```

```

</rdfs:subClassOf>
<rdfs:subClassOf>
  <owl:Restriction>
    <owl:onProperty>
      <owl:ObjectProperty
rdf:about="http://localhost:8080/portalHumasProtokol/ontology#memimpin_keg"/>
      </owl:onProperty>
      <owl:allValuesFrom>
        <owl:Class
rdf:about="http://localhost:8080/portalHumasProtokol/ontology#Kegiatan"/>
        </owl:allValuesFrom>
      </owl:Restriction>
    </rdfs:subClassOf>
  </owl:Class>
  <owl:Class rdf:about="http://localhost:8080/portalHumasProtokol/ontology#Kegiatan">
    <rdfs:subClassOf>
      <owl:Restriction>
        <owl:allValuesFrom
rdf:resource="http://localhost:8080/portalHumasProtokol/ontology#HumasProtokol"/>
        <owl:onProperty>
          <owl:ObjectProperty
rdf:about="http://localhost:8080/portalHumasProtokol/ontology#dimiliki_oleh"/>
          </owl:onProperty>
        </owl:Restriction>
      </rdfs:subClassOf>
      <rdfs:subClassOf>
        <owl:Restriction>
          <owl:allValuesFrom
rdf:resource="http://localhost:8080/portalHumasProtokol/ontology#KepalaSubBagian"/>
          <owl:onProperty>
            <owl:ObjectProperty
rdf:about="http://localhost:8080/portalHumasProtokol/ontology#dipimpin_keg"/>
            </owl:onProperty>
          </owl:Restriction>
        </rdfs:subClassOf>
        <rdfs:subClassOf rdf:resource="http://www.w3.org/2002/07/owl#Thing"/>
        <owl:disjointWith>
          <owl:Class
rdf:about="http://localhost:8080/portalHumasProtokol/ontology#Peranan"/>
          </owl:disjointWith>
        <rdfs:subClassOf>
          <owl:Restriction>
            <owl:someValuesFrom
rdf:resource="http://localhost:8080/portalHumasProtokol/ontology#Infrastruktur"/>

```

```

    <owl:onProperty>
      <owl:ObjectProperty
rdf:about="http://localhost:8080/portalHumasProtokol/ontology#menggunakan_keg"/>
    </owl:onProperty>
  </owl:Restriction>
</rdfs:subClassOf>
<rdfs:label rdf:datatype="http://www.w3.org/2001/XMLSchema#string"
>Kegiatan</rdfs:label>
  <owl:disjointWith
rdf:resource="http://localhost:8080/portalHumasProtokol/ontology#HumasProtokol"/>
  <rdfs:subClassOf>
    <owl:Restriction>
      <owl:onProperty>
        <owl:ObjectProperty
rdf:about="http://localhost:8080/portalHumasProtokol/ontology#beranggotakan"/>
        </owl:onProperty>
        <owl:allValuesFrom>
          <owl:Class
rdf:about="http://localhost:8080/portalHumasProtokol/ontology#Pegawai"/>
          </owl:allValuesFrom>
        </owl:Restriction>
      </rdfs:subClassOf>
      <owl:disjointWith
rdf:resource="http://localhost:8080/portalHumasProtokol/ontology#Infrastruktur"/>
      <owl:disjointWith>
        <owl:Class
rdf:about="http://localhost:8080/portalHumasProtokol/ontology#Pegawai"/>
        </owl:disjointWith>
      </owl:Class>
      <owl:Class
rdf:about="http://localhost:8080/portalHumasProtokol/ontology#KepalaBagian">
        <owl:disjointWith
rdf:resource="http://localhost:8080/portalHumasProtokol/ontology#Pelaksana"/>
        <owl:disjointWith
rdf:resource="http://localhost:8080/portalHumasProtokol/ontology#KepalaSubBagian"/>
        <rdfs:subClassOf
rdf:resource="http://localhost:8080/portalHumasProtokol/ontology#PegawaiNegeriSipil"/>
        <rdfs:subClassOf>
          <owl:Restriction>
            <owl:allValuesFrom
rdf:resource="http://localhost:8080/portalHumasProtokol/ontology#HumasProtokol"/>
            <owl:onProperty>
              <owl:ObjectProperty
rdf:about="http://localhost:8080/portalHumasProtokol/ontology#memimpin"/>
              </owl:onProperty>

```

```

    </owl:Restriction>
  </rdfs:subClassOf>
  <rdfs:label rdf:datatype="http://www.w3.org/2001/XMLSchema#string"
  >KepalaBagian</rdfs:label>
</owl:Class>
<owl:Class rdf:about="http://localhost:8080/portalHumasProtokol/ontology#Pegawai">
  <rdfs:label rdf:datatype="http://www.w3.org/2001/XMLSchema#string"
  >Pegawai</rdfs:label>
  <rdfs:subClassOf>
    <owl:Restriction>
      <owl:allValuesFrom
rdf:resource="http://localhost:8080/portalHumasProtokol/ontology#HumasProtokol"/>
      <owl:onProperty>
        <owl:ObjectProperty
rdf:about="http://localhost:8080/portalHumasProtokol/ontology#bekerja_di_bag"/>
        </owl:onProperty>
      </owl:Restriction>
    </rdfs:subClassOf>
    <rdfs:subClassOf rdf:resource="http://www.w3.org/2002/07/owl#Thing"/>
    <rdfs:subClassOf>
      <owl:Restriction>
        <owl:someValuesFrom
rdf:resource="http://localhost:8080/portalHumasProtokol/ontology#Infrastruktur"/>
        <owl:onProperty>
          <owl:ObjectProperty
rdf:about="http://localhost:8080/portalHumasProtokol/ontology#menggunakan"/>
          </owl:onProperty>
        </owl:Restriction>
      </rdfs:subClassOf>
      <owl:disjointWith>
        <owl:Class
rdf:about="http://localhost:8080/portalHumasProtokol/ontology#Peranan"/>
        </owl:disjointWith>
        <owl:disjointWith
rdf:resource="http://localhost:8080/portalHumasProtokol/ontology#HumasProtokol"/>
        <owl:disjointWith
rdf:resource="http://localhost:8080/portalHumasProtokol/ontology#Infrastruktur"/>
        <owl:disjointWith
rdf:resource="http://localhost:8080/portalHumasProtokol/ontology#Kegiatan"/>
      </owl:Class>
    <owl:Class rdf:about="http://localhost:8080/portalHumasProtokol/ontology#Fungsi">
      <rdfs:label rdf:datatype="http://www.w3.org/2001/XMLSchema#string"
      >Fungsi</rdfs:label>
    </rdfs:subClassOf>

```

```

    <owl:Class
rdf:about="http://localhost:8080/portalHumasProtokol/ontology#Peranan"/>
    </rdfs:subClassOf>
    <owl:disjointWith
rdf:resource="http://localhost:8080/portalHumasProtokol/ontology#Tugas"/>
    </owl:Class>
    <owl:Class
rdf:about="http://localhost:8080/portalHumasProtokol/ontology#KegiatanEksternal">
    <rdfs:label rdf:datatype="http://www.w3.org/2001/XMLSchema#string"
>KegiatanEksternal</rdfs:label>
    <owl:disjointWith>
    <owl:Class
rdf:about="http://localhost:8080/portalHumasProtokol/ontology#KegiatanInternal"/>
    </owl:disjointWith>
    <rdfs:subClassOf
rdf:resource="http://localhost:8080/portalHumasProtokol/ontology#Kegiatan"/>
    </owl:Class>
    <owl:Class rdf:about="http://localhost:8080/portalHumasProtokol/ontology#Humas">
    <rdfs:label rdf:datatype="http://www.w3.org/2001/XMLSchema#string"
>Humas</rdfs:label>
    <rdfs:subClassOf
rdf:resource="http://localhost:8080/portalHumasProtokol/ontology#HumasProtokol"/>
    <rdfs:subClassOf>
    <owl:Restriction>
    <owl:onProperty>
    <owl:ObjectProperty
rdf:about="http://localhost:8080/portalHumasProtokol/ontology#dipimpin"/>
    </owl:onProperty>
    <owl:allValuesFrom
rdf:resource="http://localhost:8080/portalHumasProtokol/ontology#KepalaSubBagian"/>
    </owl:Restriction>
    </rdfs:subClassOf>
    <owl:disjointWith>
    <owl:Class
rdf:about="http://localhost:8080/portalHumasProtokol/ontology#Protokol"/>
    </owl:disjointWith>
    </owl:Class>
    <owl:Class rdf:about="http://localhost:8080/portalHumasProtokol/ontology#Peranan">
    <owl:disjointWith
rdf:resource="http://localhost:8080/portalHumasProtokol/ontology#Pegawai"/>
    <owl:disjointWith
rdf:resource="http://localhost:8080/portalHumasProtokol/ontology#Infrastruktur"/>
    <owl:disjointWith
rdf:resource="http://localhost:8080/portalHumasProtokol/ontology#Kegiatan"/>
    <owl:disjointWith
rdf:resource="http://localhost:8080/portalHumasProtokol/ontology#HumasProtokol"/>

```

```

<rdfs:label rdf:datatype="http://www.w3.org/2001/XMLSchema#string"
>Peranan</rdfs:label>
<rdfs:subClassOf>
  <owl:Restriction>
    <owl:allValuesFrom
rdf:resource="http://localhost:8080/portalHumasProtokol/ontology#HumasProtokol"/>
    <owl:onProperty>
      <owl:ObjectProperty
rdf:about="http://localhost:8080/portalHumasProtokol/ontology#dimiliki_per"/>
    </owl:onProperty>
  </owl:Restriction>
</rdfs:subClassOf>
<rdfs:subClassOf rdf:resource="http://www.w3.org/2002/07/owl#Thing"/>
</owl:Class>
<owl:Class
rdf:about="http://localhost:8080/portalHumasProtokol/ontology#KegiatanInternal">
  <owl:disjointWith
rdf:resource="http://localhost:8080/portalHumasProtokol/ontology#KegiatanEksternal"/>
  <rdfs:label rdf:datatype="http://www.w3.org/2001/XMLSchema#string"
>KegiatanInternal</rdfs:label>
  <rdfs:subClassOf
rdf:resource="http://localhost:8080/portalHumasProtokol/ontology#Kegiatan"/>
</owl:Class>
<owl:Class rdf:about="http://localhost:8080/portalHumasProtokol/ontology#Protokol">
  <rdfs:label rdf:datatype="http://www.w3.org/2001/XMLSchema#string"
>Protokol</rdfs:label>
  <owl:disjointWith
rdf:resource="http://localhost:8080/portalHumasProtokol/ontology#Humas"/>
  <rdfs:subClassOf
rdf:resource="http://localhost:8080/portalHumasProtokol/ontology#HumasProtokol"/>
  <rdfs:subClassOf>
    <owl:Restriction>
      <owl:allValuesFrom
rdf:resource="http://localhost:8080/portalHumasProtokol/ontology#KepalaSubBagian"/>
      <owl:onProperty>
        <owl:ObjectProperty
rdf:about="http://localhost:8080/portalHumasProtokol/ontology#dipimpin"/>
      </owl:onProperty>
    </owl:Restriction>
  </rdfs:subClassOf>
</owl:Class>
<owl:ObjectProperty
rdf:about="http://localhost:8080/portalHumasProtokol/ontology#digunakan_di">
  <owl:inverseOf>

```

```

    <owl:ObjectProperty
rdf:about="http://localhost:8080/portalHumasProtokol/ontology#menggunakan_keg"/>
    </owl:inverseOf>
  </owl:ObjectProperty>
  <owl:ObjectProperty
rdf:about="http://localhost:8080/portalHumasProtokol/ontology#memiliki_per">
    <owl:inverseOf>
      <owl:ObjectProperty
rdf:about="http://localhost:8080/portalHumasProtokol/ontology#dimiliki_per"/>
        </owl:inverseOf>
      </owl:ObjectProperty>
      <owl:ObjectProperty
rdf:about="http://localhost:8080/portalHumasProtokol/ontology#dimiliki_per">
        <owl:inverseOf
rdf:resource="http://localhost:8080/portalHumasProtokol/ontology#memiliki_per"/>
          </owl:ObjectProperty>
          <owl:ObjectProperty
rdf:about="http://localhost:8080/portalHumasProtokol/ontology#dipimpin_keg">
            <owl:inverseOf>
              <owl:ObjectProperty
rdf:about="http://localhost:8080/portalHumasProtokol/ontology#memimpin_keg"/>
                </owl:inverseOf>
              </owl:ObjectProperty>
              <owl:ObjectProperty
rdf:about="http://localhost:8080/portalHumasProtokol/ontology#memimpin_keg">
                <owl:inverseOf
rdf:resource="http://localhost:8080/portalHumasProtokol/ontology#dipimpin_keg"/>
                  </owl:ObjectProperty>
                  <owl:ObjectProperty
rdf:about="http://localhost:8080/portalHumasProtokol/ontology#menggunakan_keg">
                    <owl:inverseOf
rdf:resource="http://localhost:8080/portalHumasProtokol/ontology#digunakan_di"/>
                      </owl:ObjectProperty>
                      <owl:ObjectProperty
rdf:about="http://localhost:8080/portalHumasProtokol/ontology#mempekerjakan">
                        <owl:inverseOf>
                          <owl:ObjectProperty
rdf:about="http://localhost:8080/portalHumasProtokol/ontology#bekerja_di_bag"/>
                            </owl:inverseOf>
                          </owl:ObjectProperty>
                          <owl:ObjectProperty
rdf:about="http://localhost:8080/portalHumasProtokol/ontology#memiliki">
                            <owl:inverseOf>
                              <owl:ObjectProperty
rdf:about="http://localhost:8080/portalHumasProtokol/ontology#dimiliki_oleh"/>
                                </owl:inverseOf>
                              </owl:ObjectProperty>
                              <owl:inverseOf>
                                </owl:inverseOf>
                              </owl:ObjectProperty>
                            </owl:inverseOf>
                          </owl:ObjectProperty>
                        </owl:inverseOf>
                      </owl:ObjectProperty>
                    </owl:inverseOf>
                  </owl:ObjectProperty>
                </owl:inverseOf>
              </owl:ObjectProperty>
            </owl:inverseOf>
          </owl:ObjectProperty>
        </owl:inverseOf>
      </owl:ObjectProperty>
    </owl:inverseOf>
  </owl:ObjectProperty>

```

```

</owl:ObjectProperty>
<owl:ObjectProperty
rdf:about="http://localhost:8080/portalHumasProtokol/ontology#beranggotakan">
  <owl:inverseOf>
    <owl:ObjectProperty
rdf:about="http://localhost:8080/portalHumasProtokol/ontology#anggota_keg"/>
    </owl:inverseOf>
  </owl:ObjectProperty>
  <owl:ObjectProperty
rdf:about="http://localhost:8080/portalHumasProtokol/ontology#dimiliki_oleh">
    <owl:inverseOf
rdf:resource="http://localhost:8080/portalHumasProtokol/ontology#memiliki"/>
    </owl:ObjectProperty>
  <owl:ObjectProperty
rdf:about="http://localhost:8080/portalHumasProtokol/ontology#anggota_keg">
    <owl:inverseOf
rdf:resource="http://localhost:8080/portalHumasProtokol/ontology#beranggotakan"/>
    </owl:ObjectProperty>
  <owl:ObjectProperty
rdf:about="http://localhost:8080/portalHumasProtokol/ontology#digunakan_oleh">
    <owl:inverseOf>
      <owl:ObjectProperty
rdf:about="http://localhost:8080/portalHumasProtokol/ontology#menggunakan"/>
      </owl:inverseOf>
    </owl:ObjectProperty>
  <owl:ObjectProperty
rdf:about="http://localhost:8080/portalHumasProtokol/ontology#dipimpin">
    <owl:inverseOf>
      <owl:ObjectProperty
rdf:about="http://localhost:8080/portalHumasProtokol/ontology#memimpin"/>
      </owl:inverseOf>
    </owl:ObjectProperty>
  <owl:ObjectProperty
rdf:about="http://localhost:8080/portalHumasProtokol/ontology#menggunakan">
    <owl:inverseOf
rdf:resource="http://localhost:8080/portalHumasProtokol/ontology#digunakan_oleh"/>
    </owl:ObjectProperty>
  <owl:ObjectProperty
rdf:about="http://localhost:8080/portalHumasProtokol/ontology#memimpin">
    <owl:inverseOf
rdf:resource="http://localhost:8080/portalHumasProtokol/ontology#dipimpin"/>
    </owl:ObjectProperty>
  <owl:ObjectProperty
rdf:about="http://localhost:8080/portalHumasProtokol/ontology#bekerja_di_bag">
    <owl:inverseOf
rdf:resource="http://localhost:8080/portalHumasProtokol/ontology#mempekerjakan"/>
    </owl:ObjectProperty>

```



```

<owl:DatatypeProperty
rdf:about="http://localhost:8080/portalHumasProtokol/ontology#jenis_kelamin">
  <rdfs:domain
rdf:resource="http://localhost:8080/portalHumasProtokol/ontology#Pegawai"/>
  <rdfs:range>
    <owl:DataRange>
      <owl:oneOf rdf:parseType="Resource">
        <rdf:first rdf:datatype="http://www.w3.org/2001/XMLSchema#string"
>L</rdf:first>
        <rdf:rest rdf:parseType="Resource">
          <rdf:first rdf:datatype="http://www.w3.org/2001/XMLSchema#string"
>P</rdf:first>
          <rdf:rest rdf:resource="http://www.w3.org/1999/02/22-rdf-syntax-ns#nil"/>
        </rdf:rest>
      </owl:oneOf>
    </owl:DataRange>
  </rdfs:range>
</owl:DatatypeProperty>

<owl:DatatypeProperty
rdf:about="http://localhost:8080/portalHumasProtokol/ontology#namaBagian">
  <rdfs:range rdf:resource="http://www.w3.org/2001/XMLSchema#string"/>
  <rdfs:domain
rdf:resource="http://localhost:8080/portalHumasProtokol/ontology#HumasProtokol"/>
</owl:DatatypeProperty>

<owl:DatatypeProperty
rdf:about="http://localhost:8080/portalHumasProtokol/ontology#jenis_kegiatan">
  <rdfs:domain
rdf:resource="http://localhost:8080/portalHumasProtokol/ontology#Kegiatan"/>
  <rdfs:range>
    <owl:DataRange>
      <owl:oneOf rdf:parseType="Resource">
        <rdf:first rdf:datatype="http://www.w3.org/2001/XMLSchema#string"
>harian</rdf:first>
        <rdf:rest rdf:parseType="Resource">
          <rdf:rest rdf:parseType="Resource">
            <rdf:rest rdf:resource="http://www.w3.org/1999/02/22-rdf-syntax-
ns#nil"/>
            <rdf:first rdf:datatype="http://www.w3.org/2001/XMLSchema#string"
>bulanan</rdf:first>
          </rdf:rest>
          <rdf:first rdf:datatype="http://www.w3.org/2001/XMLSchema#string"
>mingguan</rdf:first>
        </rdf:rest>
      </owl:oneOf>
    </owl:DataRange>
  </rdfs:range>
</owl:DatatypeProperty>

```

```

    </owl:oneOf>
    </owl:DataRange>
  </rdfs:range>
</owl:DatatypeProperty>
<owl:DatatypeProperty
rdf:about="http://localhost:8080/portalHumasProtokol/ontology#jumlah_staf">
  <rdfs:domain
rdf:resource="http://localhost:8080/portalHumasProtokol/ontology#HumasProtokol"/>
  <rdfs:range rdf:resource="http://www.w3.org/2001/XMLSchema#int"/>
</owl:DatatypeProperty>
<owl:DatatypeProperty
rdf:about="http://localhost:8080/portalHumasProtokol/ontology#tingkat_ijazah">
  <rdfs:range>
    <owl:DataRange>
      <owl:oneOf rdf:parseType="Resource">
        <rdf:first rdf:datatype="http://www.w3.org/2001/XMLSchema#string"
        >SD</rdf:first>
        <rdf:rest rdf:parseType="Resource">
          <rdf:rest rdf:parseType="Resource">
            <rdf:first rdf:datatype="http://www.w3.org/2001/XMLSchema#string"
            >SLTA</rdf:first>
            <rdf:rest rdf:parseType="Resource">
              <rdf:first rdf:datatype="http://www.w3.org/2001/XMLSchema#string"
              >S1</rdf:first>
              <rdf:rest rdf:parseType="Resource">
                <rdf:first rdf:datatype="http://www.w3.org/2001/XMLSchema#string"
                >S2</rdf:first>
                <rdf:rest rdf:parseType="Resource">
                  <rdf:first rdf:datatype="http://www.w3.org/2001/XMLSchema#string"
                  >D1</rdf:first>
                  <rdf:rest rdf:parseType="Resource">
                    <rdf:rest rdf:parseType="Resource">
                      <rdf:first
rdf:datatype="http://www.w3.org/2001/XMLSchema#string"
                      >D3</rdf:first>
                      <rdf:rest rdf:parseType="Resource">
                        <rdf:first
rdf:datatype="http://www.w3.org/2001/XMLSchema#string"
                        >S3</rdf:first>
                        <rdf:rest rdf:resource="http://www.w3.org/1999/02/22-rdf-
syntax-ns#nil"/>
                      </rdf:rest>
                    </rdf:rest>
                  </rdf:rest>
                </rdf:rest>
              </rdf:rest>
            </rdf:rest>
          </rdf:rest>
        </rdf:rest>
      </owl:oneOf>
    </owl:DataRange>
  </rdfs:range>
</owl:DatatypeProperty>

```

```

        <rdf:first
rdf:datatype="http://www.w3.org/2001/XMLSchema#string"
        >D2</rdf:first>
    </rdf:rest>
</rdf:rest>
</rdf:rest>
</rdf:rest>
</owl:oneOf>
</owl:DataRange>
</rdfs:range>
<rdfs:domain
rdf:resource="http://localhost:8080/portalHumasProtokol/ontology#Pegawai"/>
</owl:DatatypeProperty>
<owl:DatatypeProperty
rdf:about="http://localhost:8080/portalHumasProtokol/ontology#golongan">
    <rdfs:range rdf:resource="http://www.w3.org/2001/XMLSchema#string"/>
    <rdfs:domain
rdf:resource="http://localhost:8080/portalHumasProtokol/ontology#PegawaiNegeriSipil"/>
    </owl:DatatypeProperty>
<owl:DatatypeProperty
rdf:about="http://localhost:8080/portalHumasProtokol/ontology#deskripsi">
    <rdfs:domain
rdf:resource="http://localhost:8080/portalHumasProtokol/ontology#Kegiatan"/>
    <rdfs:range rdf:resource="http://www.w3.org/2001/XMLSchema#string"/>
    </owl:DatatypeProperty>
<owl:DatatypeProperty
rdf:about="http://localhost:8080/portalHumasProtokol/ontology#tipe"/>
<owl:DatatypeProperty
rdf:about="http://localhost:8080/portalHumasProtokol/ontology#tahun_lulus">
    <rdfs:range rdf:resource="http://www.w3.org/2001/XMLSchema#int"/>
    <rdfs:domain
rdf:resource="http://localhost:8080/portalHumasProtokol/ontology#Pegawai"/>
    </owl:DatatypeProperty>
<owl:DatatypeProperty
rdf:about="http://localhost:8080/portalHumasProtokol/ontology#tempat">
    <rdfs:domain
rdf:resource="http://localhost:8080/portalHumasProtokol/ontology#Kegiatan"/>
    <rdfs:range rdf:resource="http://www.w3.org/2001/XMLSchema#string"/>
    </owl:DatatypeProperty>
<owl:DatatypeProperty
rdf:about="http://localhost:8080/portalHumasProtokol/ontology#almamater">

```

```

    <rdfs:range rdf:resource="http://www.w3.org/2001/XMLSchema#string"/>
    <rdfs:domain
rdf:resource="http://localhost:8080/portalHumasProtokol/ontology#Pegawai"/>
  </owl:DatatypeProperty>
  <owl:DatatypeProperty
rdf:about="http://localhost:8080/portalHumasProtokol/ontology#nama_barang">
    <rdfs:range rdf:resource="http://www.w3.org/2001/XMLSchema#string"/>
    <rdfs:domain
rdf:resource="http://localhost:8080/portalHumasProtokol/ontology#Infrastruktur"/>
  </owl:DatatypeProperty>
  <owl:DatatypeProperty
rdf:about="http://localhost:8080/portalHumasProtokol/ontology#nama">
    <rdfs:domain
rdf:resource="http://localhost:8080/portalHumasProtokol/ontology#Pegawai"/>
    <rdfs:range rdf:resource="http://www.w3.org/2001/XMLSchema#string"/>
  </owl:DatatypeProperty>
  <owl:DatatypeProperty
rdf:about="http://localhost:8080/portalHumasProtokol/ontology#nip">
    <rdfs:domain
rdf:resource="http://localhost:8080/portalHumasProtokol/ontology#Pegawai"/>
    <rdfs:range rdf:resource="http://www.w3.org/2001/XMLSchema#string"/>
  </owl:DatatypeProperty>
  <owl:DatatypeProperty
rdf:about="http://localhost:8080/portalHumasProtokol/ontology#agama">
    <rdfs:domain
rdf:resource="http://localhost:8080/portalHumasProtokol/ontology#Pegawai"/>
  </owl:DatatypeProperty>
  <owl:DatatypeProperty
rdf:about="http://localhost:8080/portalHumasProtokol/ontology#catatan_mutasi">
    <rdfs:domain
rdf:resource="http://localhost:8080/portalHumasProtokol/ontology#Pegawai"/>
    <rdfs:range rdf:resource="http://www.w3.org/2001/XMLSchema#string"/>
  </owl:DatatypeProperty>
  <owl:DatatypeProperty
rdf:about="http://localhost:8080/portalHumasProtokol/ontology#deskripsi_per">
    <rdfs:domain
rdf:resource="http://localhost:8080/portalHumasProtokol/ontology#Peranan"/>
    <rdfs:range rdf:resource="http://www.w3.org/2001/XMLSchema#string"/>
  </owl:DatatypeProperty>
  <owl:DatatypeProperty
rdf:about="http://localhost:8080/portalHumasProtokol/ontology#tanggal_lahir">
    <rdfs:domain
rdf:resource="http://localhost:8080/portalHumasProtokol/ontology#Pegawai"/>
    <rdfs:range rdf:resource="http://www.w3.org/2001/XMLSchema#date"/>
  </owl:DatatypeProperty>
  <owl:DatatypeProperty
rdf:about="http://localhost:8080/portalHumasProtokol/ontology#jumlah">

```

```

    <rdfs:domain
rdf:resource="http://localhost:8080/portalHumasProtokol/ontology#Infrastruktur"/>
    <rdfs:range rdf:resource="http://www.w3.org/2001/XMLSchema#int"/>
  </owl:DatatypeProperty>
  <owl:DatatypeProperty
rdf:about="http://localhost:8080/portalHumasProtokol/ontology#tempat_lahir">
    <rdfs:range rdf:resource="http://www.w3.org/2001/XMLSchema#string"/>
    <rdfs:domain
rdf:resource="http://localhost:8080/portalHumasProtokol/ontology#Pegawai"/>
  </owl:DatatypeProperty>
  <owl:DatatypeProperty
rdf:about="http://localhost:8080/portalHumasProtokol/ontology#jabatan">
    <rdfs:range rdf:resource="http://www.w3.org/2001/XMLSchema#string"/>
    <rdfs:domain
rdf:resource="http://localhost:8080/portalHumasProtokol/ontology#PegawaiNegeriSipil"/>
  </owl:DatatypeProperty>

  <owl:ObjectProperty
rdf:about="http://localhost:8080/portalHumasProtokol/ontology#link">
    <rdfs:type rdf:resource="http://www.w3.org/1999/02/22-rdf-syntax-ns#Property"/>
    <rdfs:label rdf:datatype="http://www.w3.org/2001/XMLSchema#string"
    >abstract link</rdfs:label>
  </owl:ObjectProperty>

  <owl:ObjectProperty
rdf:about="http://localhost:8080/portalHumasProtokol/ontology#memiliki">
    <rdfs:subPropertyOf
rdf:resource="http://localhost:8080/portalHumasProtokol/ontology#link"/>
    <rdfs:type rdf:resource="http://www.w3.org/1999/02/22-rdf-syntax-ns#Property"/>
    <owl:inverseOf>
      <owl:ObjectProperty
rdf:about="http://localhost:8080/portalHumasProtokol/ontology#dimiliki_oleh"/>
    </owl:inverseOf>
    <rdfs:label rdf:datatype="http://www.w3.org/2001/XMLSchema#string"
    >bagian_memiliki_kegiatan</rdfs:label>
  </owl:ObjectProperty>

  <owl:ObjectProperty
rdf:about="http://localhost:8080/portalHumasProtokol/ontology#dimiliki_oleh">
    <rdfs:subPropertyOf
rdf:resource="http://localhost:8080/portalHumasProtokol/ontology#link"/>
    <rdfs:type rdf:resource="http://www.w3.org/1999/02/22-rdf-syntax-ns#Property"/>
    <owl:inverseOf>
      <owl:ObjectProperty
rdf:about="http://localhost:8080/portalHumasProtokol/ontology#memiliki"/>

```

```

</owl:inverseOf>
<rdfs:label rdf:datatype="http://www.w3.org/2001/XMLSchema#string"
  >kegiatan_dimiliki_bagian</rdfs:label>
</owl:ObjectProperty>

<owl:ObjectProperty
  rdf:about="http://localhost:8080/portalHumasProtokol/ontology#bekerja_di_bag">
<rdfs:subPropertyOf
  rdf:resource="http://localhost:8080/portalHumasProtokol/ontology#link"/>
<rdf:type rdf:resource="http://www.w3.org/1999/02/22-rdf-syntax-ns#Property"/>
<owl:inverseOf>
  <owl:ObjectProperty
    rdf:about="http://localhost:8080/portalHumasProtokol/ontology#mempekerjakan"/>
</owl:inverseOf>
<rdfs:label rdf:datatype="http://www.w3.org/2001/XMLSchema#string"
  >bekerja_di_bagian</rdfs:label>
</owl:ObjectProperty>

<owl:ObjectProperty
  rdf:about="http://localhost:8080/portalHumasProtokol/ontology#mempekerjakan">
<rdfs:subPropertyOf
  rdf:resource="http://localhost:8080/portalHumasProtokol/ontology#link"/>
<rdf:type rdf:resource="http://www.w3.org/1999/02/22-rdf-syntax-ns#Property"/>
<owl:inverseOf>
  <owl:ObjectProperty
    rdf:about="http://localhost:8080/portalHumasProtokol/ontology#bekerja_di_bag"/>
</owl:inverseOf>
<rdfs:label rdf:datatype="http://www.w3.org/2001/XMLSchema#string"
  >mempekerjakan_pegawai</rdfs:label>
</owl:ObjectProperty>

<owl:ObjectProperty
  rdf:about="http://localhost:8080/portalHumasProtokol/ontology#anggota_keg">
<rdfs:subPropertyOf
  rdf:resource="http://localhost:8080/portalHumasProtokol/ontology#link"/>
<rdf:type rdf:resource="http://www.w3.org/1999/02/22-rdf-syntax-ns#Property"/>
<owl:inverseOf>
  <owl:ObjectProperty
    rdf:about="http://localhost:8080/portalHumasProtokol/ontology#beranggotakan"/>
</owl:inverseOf>
<rdfs:label rdf:datatype="http://www.w3.org/2001/XMLSchema#string"
  >anggota_dari_kegiatan</rdfs:label>
</owl:ObjectProperty>

```

```

<owl:ObjectProperty
rdf:about="http://localhost:8080/portalHumasProtokol/ontology#beranggotakan">
<rdfs:subPropertyOf
rdf:resource="http://localhost:8080/portalHumasProtokol/ontology#link"/>
<rdf:type rdf:resource="http://www.w3.org/1999/02/22-rdf-syntax-ns#Property"/>
<owl:inverseOf>
  <owl:ObjectProperty
rdf:about="http://localhost:8080/portalHumasProtokol/ontology#anggota_keg"/>
</owl:inverseOf>
<rdfs:label rdf:datatype="http://www.w3.org/2001/XMLSchema#string"
  >kegiatan_beranggotakan</rdfs:label>
</owl:ObjectProperty>

<owl:ObjectProperty
rdf:about="http://localhost:8080/portalHumasProtokol/ontology#memimpin_keg">
<rdfs:subPropertyOf
rdf:resource="http://localhost:8080/portalHumasProtokol/ontology#link"/>
<rdf:type rdf:resource="http://www.w3.org/1999/02/22-rdf-syntax-ns#Property"/>
<owl:inverseOf>
  <owl:ObjectProperty
rdf:about="http://localhost:8080/portalHumasProtokol/ontology#dipimpin_keg"/>
</owl:inverseOf>
<rdfs:label rdf:datatype="http://www.w3.org/2001/XMLSchema#string"
  >memimpin_kegiatan</rdfs:label>
</owl:ObjectProperty>

<owl:ObjectProperty
rdf:about="http://localhost:8080/portalHumasProtokol/ontology#dipimpin_keg">
<rdfs:subPropertyOf
rdf:resource="http://localhost:8080/portalHumasProtokol/ontology#link"/>
<rdf:type rdf:resource="http://www.w3.org/1999/02/22-rdf-syntax-ns#Property"/>
<owl:inverseOf>
  <owl:ObjectProperty
rdf:about="http://localhost:8080/portalHumasProtokol/ontology#memimpin_keg"/>
</owl:inverseOf>
<rdfs:label rdf:datatype="http://www.w3.org/2001/XMLSchema#string"
  >kegiatan_dipimpin_oleh</rdfs:label>
</owl:ObjectProperty>

<owl:ObjectProperty
rdf:about="http://localhost:8080/portalHumasProtokol/ontology#digunakan_di">
<rdfs:subPropertyOf
rdf:resource="http://localhost:8080/portalHumasProtokol/ontology#link"/>
<rdf:type rdf:resource="http://www.w3.org/1999/02/22-rdf-syntax-ns#Property"/>
<owl:inverseOf>

```

```

    <owl:ObjectProperty
rdf:about="http://localhost:8080/portalHumasProtokol/ontology#menggunakan_keg"/>
</owl:inverseOf>
<rdfs:label rdf:datatype="http://www.w3.org/2001/XMLSchema#string"
    >infrastruktur_digunakan_kegiatan</rdfs:label>
</owl:ObjectProperty>

<owl:ObjectProperty
rdf:about="http://localhost:8080/portalHumasProtokol/ontology#menggunakan_keg">
<rdfs:subPropertyOf
rdf:resource="http://localhost:8080/portalHumasProtokol/ontology#link"/>
<rdf:type rdf:resource="http://www.w3.org/1999/02/22-rdf-syntax-ns#Property"/>
<owl:inverseOf>
    <owl:ObjectProperty
rdf:about="http://localhost:8080/portalHumasProtokol/ontology#digunakan_di"/>
</owl:inverseOf>
<rdfs:label rdf:datatype="http://www.w3.org/2001/XMLSchema#string"
    >kegiatan_menggunakan_infrastruktur</rdfs:label>
</owl:ObjectProperty>

<owl:ObjectProperty
rdf:about="http://localhost:8080/portalHumasProtokol/ontology#menggunakan">
<rdfs:subPropertyOf
rdf:resource="http://localhost:8080/portalHumasProtokol/ontology#link"/>
<rdf:type rdf:resource="http://www.w3.org/1999/02/22-rdf-syntax-ns#Property"/>
<owl:inverseOf>
    <owl:ObjectProperty
rdf:about="http://localhost:8080/portalHumasProtokol/ontology#digunakan_oleh"/>
</owl:inverseOf>
<rdfs:label rdf:datatype="http://www.w3.org/2001/XMLSchema#string"
    >penanggung_jawab_infrastruktur</rdfs:label>
</owl:ObjectProperty>

<owl:ObjectProperty
rdf:about="http://localhost:8080/portalHumasProtokol/ontology#digunakan_oleh">
<rdfs:subPropertyOf
rdf:resource="http://localhost:8080/portalHumasProtokol/ontology#link"/>
<rdf:type rdf:resource="http://www.w3.org/1999/02/22-rdf-syntax-ns#Property"/>
<owl:inverseOf>
    <owl:ObjectProperty
rdf:about="http://localhost:8080/portalHumasProtokol/ontology#menggunakan"/>
</owl:inverseOf>
<rdfs:label rdf:datatype="http://www.w3.org/2001/XMLSchema#string"
    >infrastruktur_digunakan_pegawai</rdfs:label>

```



```

</owl:ObjectProperty>

<owl:ObjectProperty
rdf:about="http://localhost:8080/portalHumasProtokol/ontology#memimpin">
<rdfs:subPropertyOf
rdf:resource="http://localhost:8080/portalHumasProtokol/ontology#link"/>
<rdf:type rdf:resource="http://www.w3.org/1999/02/22-rdf-syntax-ns#Property"/>
<owl:inverseOf>
  <owl:ObjectProperty
rdf:about="http://localhost:8080/portalHumasProtokol/ontology#dipimpin"/>
</owl:inverseOf>
<rdfs:label rdf:datatype="http://www.w3.org/2001/XMLSchema#string"
  >pimpinan_bagian</rdfs:label>
</owl:ObjectProperty>

<owl:ObjectProperty
rdf:about="http://localhost:8080/portalHumasProtokol/ontology#dipimpin">
<rdfs:subPropertyOf
rdf:resource="http://localhost:8080/portalHumasProtokol/ontology#link"/>
<rdf:type rdf:resource="http://www.w3.org/1999/02/22-rdf-syntax-ns#Property"/>
<owl:inverseOf>
  <owl:ObjectProperty
rdf:about="http://localhost:8080/portalHumasProtokol/ontology#memimpin"/>
</owl:inverseOf>
<rdfs:label rdf:datatype="http://www.w3.org/2001/XMLSchema#string"
  >bagian_dipimpin_oleh</rdfs:label>
</owl:ObjectProperty>
</rdf:RDF>

<!-- Created with Protege (with OWL Plugin 3.3.1, Build 430)
http://protege.stanford.edu -->

```

LAMPIRAN C : INSTANCES DATA**HumasProtokol.csv**

```
id,tipe,namaBagian,kepala
HUP,HumasProtokol,Humas Protokol,Eko_Herwiyanto_AP
HUM,Humas,Humas,fahmi
PRO,Protokol,Protokol,Dani_Hamdani_S_STP
```

Pegawai.csv

```
id,nip,tipe,nama,golongan,almamater,tahun_lulus,tingkat_ijazah,tempat_lahir,tanggal_la
hir,agama,catatan_mutasi,jenis_kelamin,afiliasi
Eko Herwiyanto AP,010 249 559,KepalaBagian,Eko Herwiyanto
AP, III/d, STIAMI, 2006, S2, Boyolali, 11/08/1972, Islam, Sekcam, L, HUP
fahmi, 480 126 069, KepalaSubBagian, Muhammad Fahmi ST. M.Si, III/c, STIAMI, 2005, S2, Ujung
Pandang, 02/02/1974, Islam, Bag. Infokom, L, HUM
Dani_Hamdani_S_STP, 010 264 839, KepalaSubBagian, Dani Hamdani
S.STP, III/b, STPDN, 2003, S1, Garut, 05/02/1980, Islam, Dinas Tata Kota, L, PRO
rusmini, 010 175 817, Pelaksana, Rusmini, III/b, SMA, 1982, SLTA, Gombong, 22/08/1961, Islam, D D
N, P, HUM
minar, 400 033 131, Pelaksana, Minar
Rosdiana, III/b, SMA, 1983, SLTA, Balige, 15/11/1962, Protestan, Kab. Simalungun, P, HUM
hartikah, 480 123 288, Pelaksana, Dra.
Hartikah, III/b, UNPAD, 1992, S1, Bogor, 15/04/1965, Islam, Bag. Keuangan, P, HUM
ahmad, 010 267 122, Pelaksana, Ahmad S.STP, III/a, STPDN, 2005, S1, Teluk
Betung, 27/04/1981, Islam, Bag. Umum, L, PRO
fathir, 010 268 932, Pelaksana, Fathir Fajar Sidiq
S.STP, III/a, STPDN, 2006, S1, Bogor, 22/06/1984, Islam, Bag. Umum, L, PRO
tranto, 480 148 203, Pelaksana, R. Tranto Dwi Hardjono
SH, III/a, UNTAG, 1996, S1, Purwodadi, 31/05/1969, Islam, Bag. Umum, L, PRO
nasrullah, 480 133
066, Pelaksana, Nasrullah, II/c, BSI, 2001, D3, Jakarta, 03/07/1978, Islam, Kec. Sukmajaya, L, HUM
shillawati, 480 145
936, Pelaksana, Shillawati, II/c, UI, 2003, D3, Jakarta, 30/03/1982, Islam, , P, HUM
erwin, 480 119 637, Pelaksana, Erwin Narto, II/b, UI, 2008, S1, Depok, 22/05/1979, Islam, Bag.
Umum, L, PRO
retno, 480 123 296, Pelaksana, Retno
Sustyaningsih, II/b, SMA, 1992, SLTA, Jakarta, 01/02/1974, Islam, Bag. Umum, P, PRO
djoko, 160 033 051, Pelaksana, Djoko
Wahyudi, II/a, SD, 1972, SD, Jatisari, 10/03/1958, Islam, Depnaker, L, HUM
riswati, 010 163 253, Pelaksana, Riswati, II/a, SD, 1971, SD, Purwokerto, 09/05/1958, Islam, D D
N, P, HUM
erwan, 480 126 143, Pelaksana, Erwan
Mindaya, II/a, SMA, 1985, SLTA, Bogor, 04/08/1965, Islam, , L, HUM
ade, 480 148 227, Pelaksana, Ade Hukmawan, II/a, STM, 1997, SLTA, Subang, 09/04/1981, Islam, Bag.
Umum, L, PRO
kodir, 480 174 487, Pelaksana, Abdul Kodir, II/a, SMA, 1997, SLTA, Bogor, 25/07/1978, Islam, Kec.
Sawangan, L, HUM
```

```

alfia,480 999 001,NonPegawaiNegeriSipil,Alfia
Budiwati,,SMA,2005,SLTA,Depok,29/02/1988,Islam,,P,PRO

rusdianto,480 999
002,NonPegawaiNegeriSipil,Rusdianto,,SMA,2005,SLTA,Jakarta,31/08/1986,Islam,,L,HUM

Andri_Setiawan,480 999 003,NonPegawaiNegeriSipil,Andri
Setiawan,,SMA,2005,SLTA,Surabaya,06/05/1987,Islam,,L,HUM

Fajar_Adi_Putra,480 999 004,NonPegawaiNegeriSipil,Fajar Adi
Putra,,SMA,2005,SLTA,Jakarta,04/03/1986,Islam,,L,PRO

wewen,480 999 005,NonPegawaiNegeriSipil,Wewen
Sajali,,SMA,2005,SLTA,Bandung,30/04/1986,Islam,,L,PRO

```

Infrastruktur.csv

```

id,nama_barang,jumlah,pegawai,kegiatan1,kegiatan2,kegiatan3,kegiatan4,kegiatan5,kegiatan6
handycam,Handycam,4,kodir,peliputan,keprotokolan,,,,
kamera,Kamera Foto,4,kodir,peliputan,keprotokolan,,,,
komputer,Komputer,14,,peliputan,pembuatan klipings,pembuatan advertorial,pelayanan pengaduan,pembuatan_buku,pengelolaan_internet
mobil_1,Mobil 1,1,Eko_Herwiyanto_AP,,,,,
mobil_2,Mobil 2,1,djoko,peliputan,talk_show,,,,
motor_1,Motor 1,1,nasrullah,,,,,
motor_2,Motor 2,1,kodir,,,,,
motor_3,Motor 3,1,wewen,,,,,
motor_4,Motor 4,1,rusdianto,,,,,
motor_5,Motor 5,1,djoko,,,,,

```

Peranan.csv

```

id,tipe,deskripsi,afiliasil,afiliasi2
TU1,Tugas,Melaksanakan sebagian tugas bagian Hubungan Masyarakat dan Protokol bidang kehumasan pemerintahan,HUM,
TU2,Tugas,Melaksanakan sebagian tugas bagian Hubungan Masyarakat dan Protokol bidang keprotokolan,PRO,
FH1,Fungsi,Penyusunan rencana kerja Sub Bagian Hubungan Masyarakat mengacu pada rencana kerja Bagian Hubungan Masyarakat dan Protokol,PRO,
FH2,Fungsi,Pengelolaan data kehumasan sebagai bahan penyusunan kebijakan kehumasan pemerintah kota,HUM,
FH3,Fungsi,Penyiapan bahan petunjuk teknis dalam pengumpulan sumber informasi,HUM,
FH4,Fungsi,Pengkoordinasian dalam pengendalian informasi,HUM,
FH5,Fungsi,Pengumpulan informasi kegiatan pemerintahan dan penyusunan rilis berita,HUM,
FH6,Fungsi,Pengkoordinasian dan hubungan kerja dengan media massa kegiatan pemerintah kota,HUM,

```

FH7,Fungsi,Pengkoordinasian dan pelaksanaan penyusunan laporan dan evaluasi kegiatan penyelenggaraan Sub Bagian Hubungan Masyarakat,HUM,

FH8,Fungsi,Pelaksanaan tugas kedinasan lainnya yang diberikan oleh Kepala Bagian sesuai dengan bidang tugasnya,HUM,PRO

FP1,Fungsi,Penyusunan rencana kerja Sub Bagian Protokol mengacu pada rencana strategi Setda,PRO,

FP2,Fungsi,Pengkoordinasian pelaksanaan penyiapan acara penyelenggaraan upacara rapat dinas penerimaan tamu dan kegiatan resmi lainnya,PRO,

FP3,Fungsi,Penyiapan bahan koordinasi penerimaan tamu-tamu Pemerintah Daerah dan cinderamata,PRO,

FP4,Fungsi,Penyiapan bahan koordinasi keprotokolan penerimaan pejabat negara,PRO,

FP5,Fungsi,Penyiapan sarana prasarana dan sumber daya korps musik Pemerintah Daerah,PRO,

FP6,Fungsi,Penyusunan agenda pemanduan kegiatan Walikota Wakil Walikota dan Sekretaris Daerah,PRO,

Kegiatan.csv

id,tipe,sub_bagian,deskripsi,pimpinan,anggota1,anggota2,anggota3,anggota4,anggota5,anggota6,anggota7,jenis_kegiatan,tempat,infrastruktur1,infrastruktur2,infrastruktur3,infrastruktur4

peliputan,KegiatanEksternal,HUM,Peliputan Kegiatan,fahmi,kodir,Andri Setiawan,djoko,nasrullah,,,,harian,tentative,handycam,kamera,komputer,mobil_2

talk_show,KegiatanEksternal,HUM,Talk Show Radio,fahmi,shillawati,nasrullah,rusdianto,,,,,bulanan,stasiun radio,mobil_2,,,

penyediaan_bacaan,KegiatanInternal,HUM,Penyediaan Bahan Bacaan,fahmi,djoko,riswati,,,,,harian,kantor humas,,,,

pembuatan_kliping,KegiatanInternal,HUM,Pembuatan Kliping Berita,fahmi,rusmini,erwan,hartikah,Andri Setiawan,,,,,harian,kantor humas,komputer,,,

pembuatan_advertorial,KegiatanInternal,HUM,Pembuatan Advertorial Pembangunan Depok,fahmi,nasrullah,shillawati,rusdianto,,,,,mingguan,kantor humas,komputer,,,

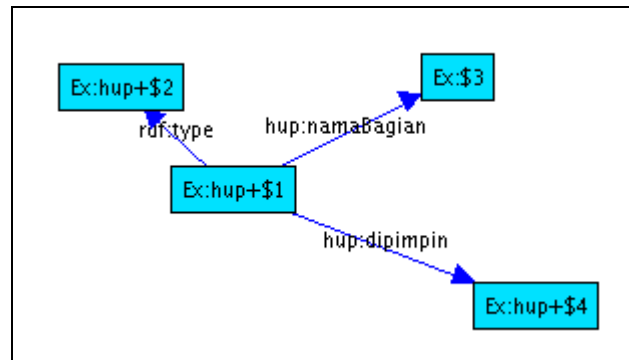
pelayanan_pengaduan,KegiatanInternal,HUM,Pelayanan Pengaduan,fahmi,hartikah,fathir,nasrullah,rusmini,minar,,,harian,kantor humas,komputer,,,

keprotokolan,KegiatanEksternal,PRO,Keprotokolan Pemkot Depok,Dani Hamdani S STP,retno,alfia,Fajar_Adi_Putra,fathir,erwin,ade,ahmad,mingguan,kantor walikota Depok,handycam,kamera,,

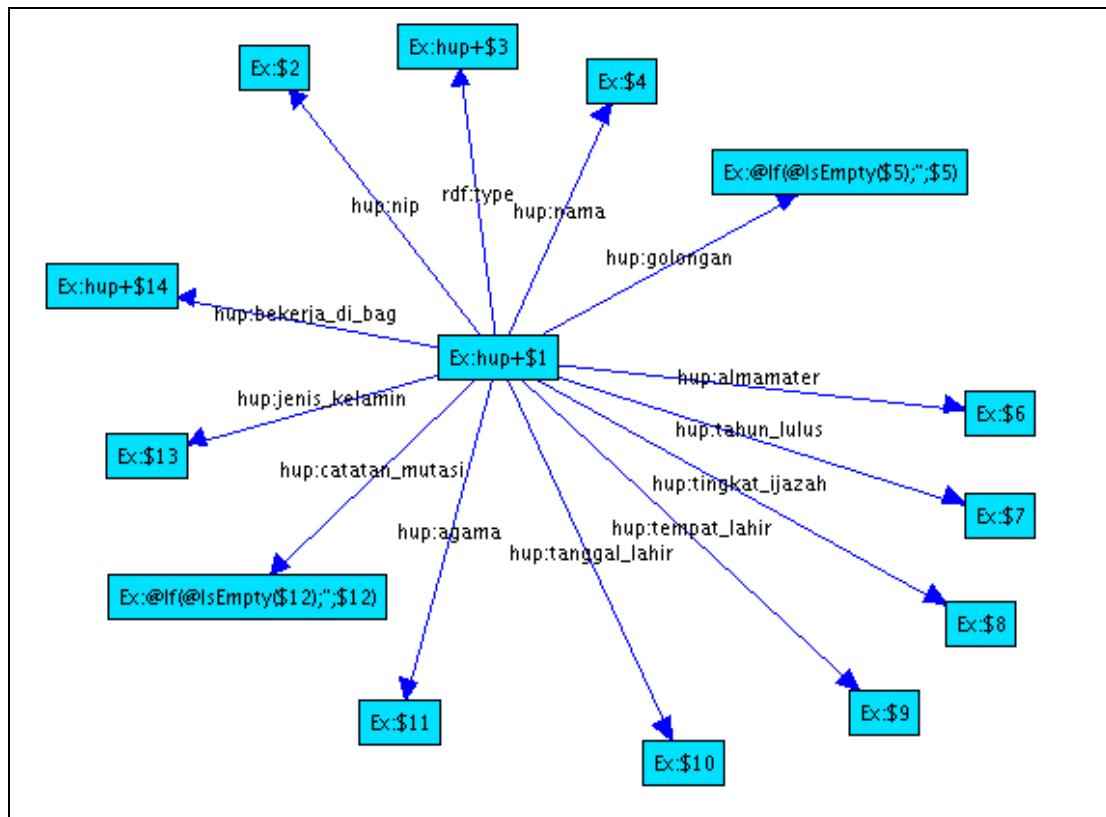
pembuatan_buku,KegiatanInternal,PRO,Pembuatan Buku Sambutan Walikota dan Wakil,Dani Hamdani S STP,fathir,nasrullah,ade,retno,,,,,harian,kantor protokol,komputer,,,

pengelolaan_internet,KegiatanInternal,PRO,Pengelolaan Media Internet,Dani Hamdani S STP,rusdianto,fathir,wewen,nasrullah,rusmini,,,harian,kantor protokol,komputer,,,

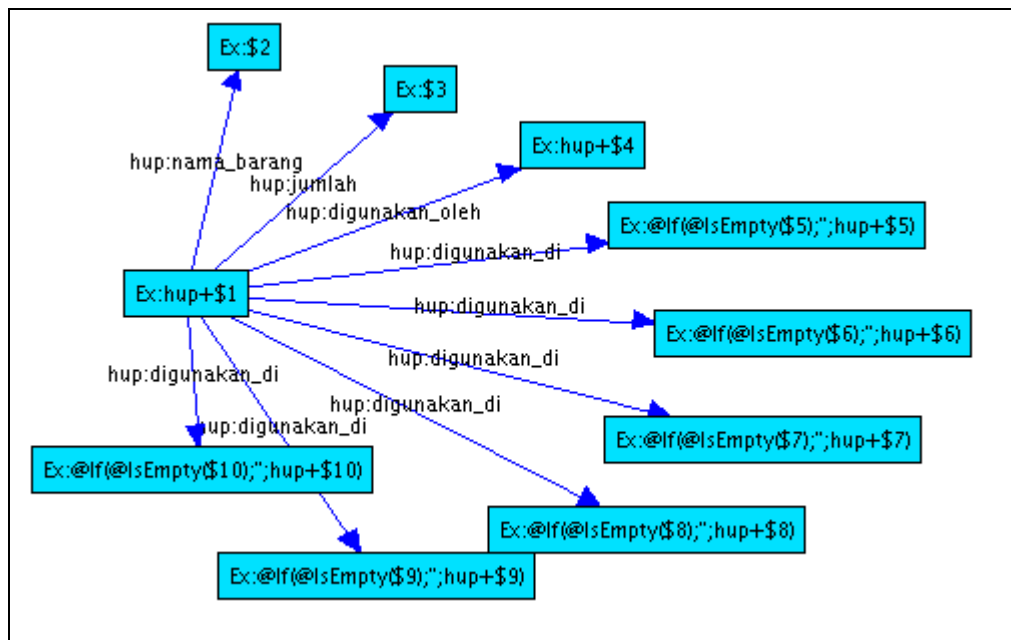
Map Graph



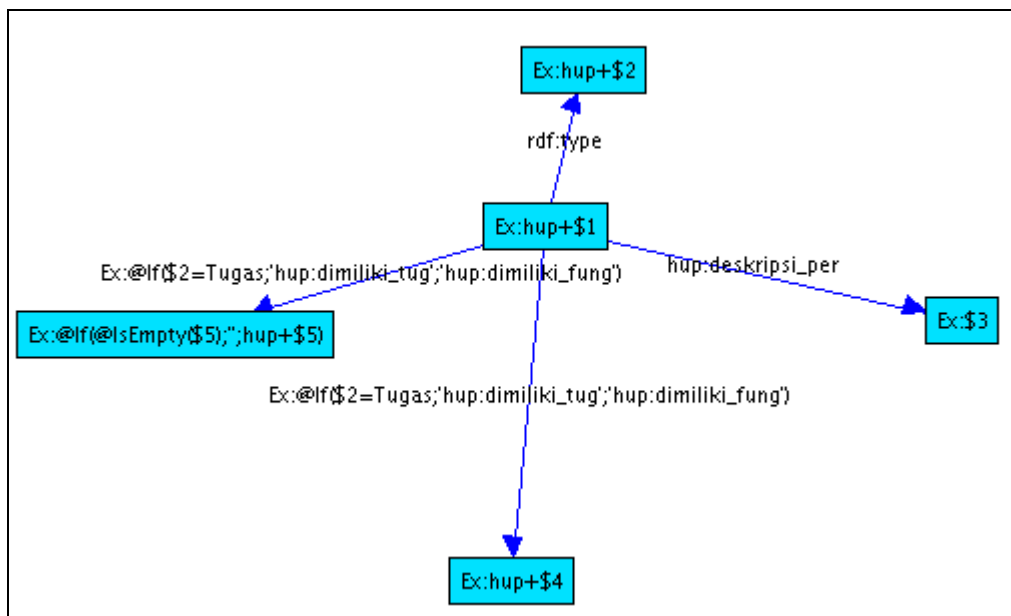
Gambar C.1 HumasProtokol.xgmml



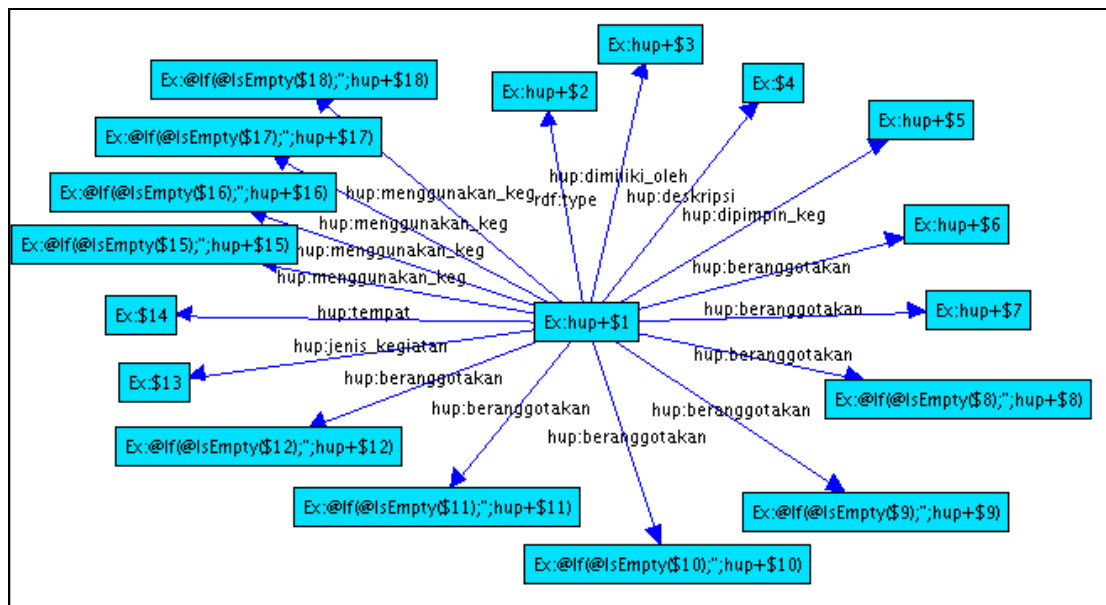
Gambar C.2 Pegawai.xgmml



Gambar C.3 Infrastruktur.xgmml



Gambar C.4 Peranan.xgmml



Gambar C.5 Kegiatan.xgmml

HumasProtokol.n3

```
# Base: http://mybase
@prefix :      <#> .
@prefix hup:  <http://localhost:8080/portalHumasProtokol/ontology#> .
@prefix rdf:  <http://www.w3.org/1999/02/22-rdf-syntax-ns#> .
@prefix rdf123: <http://rdf123.umbc.edu/ns/> .

hup:HUP
  a      hup:HumasProtokol ;
  hup:dipimpin hup:Eko_Herwiyanto_AP ;
  hup:namaBagian "Humas Protokol" .

hup:HUM
  a      hup:Humas ;
  hup:dipimpin hup:fahmi ;
  hup:namaBagian "Humas" .

hup:PRO
  a      hup:Protokol ;
  hup:dipimpin hup:Dani_Hamdani_S_STP ;
  hup:namaBagian "Protokol" .
```

Pegawai.n3

```

# Base: http://mybase
@prefix :      <#> .
@prefix hup:   <http://localhost:8080/portalHumasProtokol/ontology#> .
@prefix rdf:   <http://www.w3.org/1999/02/22-rdf-syntax-ns#> .
@prefix rdf123: <http://rdf123.umbc.edu/ns/> .

hup:kodir
    a          hup:Pelaksana ;
    hup:agama "Islam" ;
    hup:almamater "SMA" ;
    hup:bekerja_di_bag hup:HUM ;
    hup:catatan_mutasi "Kec. Sawangan" ;
    hup:golongan "II/a" ;
    hup:jenis_kelamin "L" ;
    hup:nama "Abdul Kodir" ;
    hup:nip "480 174 487" ;
    hup:tahun_lulus "1997" ;
    hup:tanggal_lahir "25/07/1978" ;
    hup:tempat_lahir "Bogor" ;
    hup:tingkat_ijazah "SLTA" .

hup:fahmi
    a          hup:KepalaSubBagian ;
    hup:agama "Islam" ;
    hup:almamater "STIAMI" ;
    hup:bekerja_di_bag hup:HUM ;
    hup:catatan_mutasi "Bag. Infokom" ;
    hup:golongan "III/c" ;
    hup:jenis_kelamin "L" ;
    hup:nama "Muhammad Fahmi ST. M.Si" ;
    hup:nip "480 126 069" ;
    hup:tahun_lulus "2005" ;
    hup:tanggal_lahir "02/02/1974" ;
    hup:tempat_lahir "Ujung Pandang" ;
    hup:tingkat_ijazah "S2" .

hup:djoko
    a          hup:Pelaksana ;
    hup:agama "Islam" ;

```



```
hup:almamater "SD" ;
hup:bekerja_di_bag hup:HUM ;
hup:catatan_mutasi "Depnaker" ;
hup:golongan "II/a" ;
hup:jenis_kelamin "L" ;
hup:nama "Djoko Wahyudi" ;
hup:nip "160 033 051" ;
hup:tahun_lulus "1972" ;
hup:tanggal_lahir "10/03/1958" ;
hup:tempat_lahir "Jatisari" ;
hup:tingkat_ijazah "SD" .
```

hup:Andri_Setiawan

```
  a      hup:NonPegawaiNegeriSipil ;
hup:agama "Islam" ;
hup:almamater "SMA" ;
hup:bekerja_di_bag hup:HUM ;
hup:jenis_kelamin "L" ;
hup:nama "Andri Setiawan" ;
hup:nip "480 999 003" ;
hup:tahun_lulus "2005" ;
hup:tanggal_lahir "6/05/1987" ;
hup:tempat_lahir "Surabaya" ;
hup:tingkat_ijazah "SLTA" .
```

hup:tranto

```
  a      hup:Pelaksana ;
hup:agama "Islam" ;
hup:almamater "UNTAG" ;
hup:bekerja_di_bag hup:PRO ;
hup:catatan_mutasi "Bag. Umum" ;
hup:golongan "III/a" ;
hup:jenis_kelamin "L" ;
hup:nama "R. Tranto Dwi Hardjono SH" ;
hup:nip "480 148 203" ;
hup:tahun_lulus "1996" ;
hup:tanggal_lahir "31/05/1969" ;
hup:tempat_lahir "Purwodadi" ;
hup:tingkat_ijazah "S1" .
```

```
hup:wewen
  a      hup:NonPegawaiNegeriSipil ;
  hup:agama "Islam" ;
  hup:almamater "SMA" ;
  hup:bekerja_di_bag hup:PRO ;
  hup:jenis_kelamin "L" ;
  hup:nama "Wewen Sajali" ;
  hup:nip "480 999 005" ;
  hup:tahun_lulus "2005" ;
  hup:tanggal_lahir "30/04/1986" ;
  hup:tempat_lahir "Bandung" ;
  hup:tingkat_ijazah "SLTA" .

hup:rusdianto
  a      hup:NonPegawaiNegeriSipil ;
  hup:agama "Islam" ;
  hup:almamater "SMA" ;
  hup:bekerja_di_bag hup:HUM ;
  hup:jenis_kelamin "L" ;
  hup:nama "Rusdianto" ;
  hup:nip "480 999 002" ;
  hup:tahun_lulus "2005" ;
  hup:tanggal_lahir "31/08/1986" ;
  hup:tempat_lahir "Jakarta" ;
  hup:tingkat_ijazah "SLTA" .

hup:hartikah
  a      hup:Pelaksana ;
  hup:agama "Islam" ;
  hup:almamater "UNPAD" ;
  hup:bekerja_di_bag hup:HUM ;
  hup:catatan_mutasi "Bag. Keuangan" ;
  hup:golongan "III/b" ;
  hup:jenis_kelamin "P" ;
  hup:nama "Dra. Hartikah" ;
  hup:nip "480 123 288" ;
  hup:tahun_lulus "1992" ;
  hup:tanggal_lahir "15/04/1965" ;
  hup:tempat_lahir "Bogor" ;
  hup:tingkat_ijazah "S1" .
```

```
hup:shillawati
  a      hup:Pelaksana ;
hup:agama "Islam" ;
hup:almamater "UI" ;
hup:bekerja_di_bag hup:HUM ;
hup:golongan "II/c" ;
hup:jenis_kelamin "P" ;
hup:nama "Shillawati" ;
hup:nip "480 145 936" ;
hup:tahun_lulus "2003" ;
hup:tanggal_lahir "30/03/1982" ;
hup:tempat_lahir "Jakarta" ;
hup:tingkat_ijazah "D3" .

hup:Fajar_Adi_Putra
  a      hup:NonPegawaiNegeriSipil ;
hup:agama "Islam" ;
hup:almamater "SMA" ;
hup:bekerja_di_bag hup:PRO ;
hup:jenis_kelamin "L" ;
hup:nama "Fajar Adi Putra" ;
hup:nip "480 999 004" ;
hup:tahun_lulus "2005" ;
hup:tanggal_lahir "4/03/1986" ;
hup:tempat_lahir "Jakarta" ;
hup:tingkat_ijazah "SLTA" .

hup:Eko_Herwiyanto_AP
  a      hup:KepalaBagian ;
hup:agama "Islam" ;
hup:almamater "STIAMI" ;
hup:bekerja_di_bag hup:HUP ;
hup:catatan_mutasi "Sekcam" ;
hup:golongan "III/d" ;
hup:jenis_kelamin "L" ;
hup:nama "Eko Herwiyanto AP" ;
hup:nip "010 249 559" ;
hup:tahun_lulus "2006" ;
hup:tanggal_lahir "11/08/1972" ;
```

```
hup:tempat_lahir "Boyolali" ;  
hup:tingkat_ijazah "S2" .
```

```
hup:fathir
```

```
  a      hup:Pelaksana ;  
hup:agama "Islam" ;  
hup:almamater "STPDN" ;  
hup:bekerja_di_bag hup:PRO ;  
hup:catatan_mutasi "Bag. Umum" ;  
hup:golongan "III/a" ;  
hup:jenis_kelamin "L" ;  
hup:nama "Fathir Fajar Sidiq S.STP" ;  
hup:nip "010 268 932" ;  
hup:tahun_lulus "2006" ;  
hup:tanggal_lahir "22/06/1984" ;  
hup:tempat_lahir "Bogor" ;  
hup:tingkat_ijazah "S1" .
```

```
hup:nasrullah
```

```
  a      hup:Pelaksana ;  
hup:agama "Islam" ;  
hup:almamater "BSI" ;  
hup:bekerja_di_bag hup:HUM ;  
hup:catatan_mutasi "Kec. Sukmajaya" ;  
hup:golongan "II/c" ;  
hup:jenis_kelamin "L" ;  
hup:nama "Nasrullah" ;  
hup:nip "480 133 066" ;  
hup:tahun_lulus "2001" ;  
hup:tanggal_lahir "03/07/1978" ;  
hup:tempat_lahir "Jakarta" ;  
hup:tingkat_ijazah "D3" .
```

```
hup:erwan
```

```
  a      hup:Pelaksana ;  
hup:agama "Islam" ;  
hup:almamater "SMA" ;  
hup:bekerja_di_bag hup:HUM ;  
hup:golongan "II/a" ;  
hup:jenis_kelamin "L" ;
```

```
hup:nama "Erwan Mindaya" ;
hup:nip "480 126 143" ;
hup:tahun_lulus "1985" ;
hup:tanggal_lahir "04/08/1965" ;
hup:tempat_lahir "Bogor" ;
hup:tingkat_ijazah "SLTA" .
```

hup:rusmini

```
  a      hup:Pelaksana ;
hup:agama "Islam" ;
hup:almamater "SMA" ;
hup:bekerja_di_bag hup:HUM ;
hup:catatan_mutasi "D D N" ;
hup:golongan "III/b" ;
hup:jenis_kelamin "P" ;
hup:nama "Rusmini" ;
hup:nip "010 175 817" ;
hup:tahun_lulus "1982" ;
hup:tanggal_lahir "22/08/1961" ;
hup:tempat_lahir "Gombang" ;
hup:tingkat_ijazah "SLTA" .
```

hup:minar

```
  a      hup:Pelaksana ;
hup:agama "Protestan" ;
hup:almamater "SMA" ;
hup:bekerja_di_bag hup:HUM ;
hup:catatan_mutasi "Kab. Simalungun" ;
hup:golongan "III/b" ;
hup:jenis_kelamin "P" ;
hup:nama "Minar Rosdiana" ;
hup:nip "400 033 131" ;
hup:tahun_lulus "1983" ;
hup:tanggal_lahir "15/11/1962" ;
hup:tempat_lahir "Balige" ;
hup:tingkat_ijazah "SLTA" .
```

hup:ade

```
  a      hup:Pelaksana ;
hup:agama "Islam" ;
```

```
hup:almamater "STM" ;
hup:bekerja_di_bag hup:PRO ;
hup:catatan_mutasi "Bag. Umum" ;
hup:golongan "II/a" ;
hup:jenis_kelamin "L" ;
hup:nama "Ade Hukmawan" ;
hup:nip "480 148 227" ;
hup:tahun_lulus "1997" ;
hup:tanggal_lahir "09/04/1981" ;
hup:tempat_lahir "Subang" ;
hup:tingkat_ijazah "SLTA" .
```

hup:alfia

```
  a      hup:NonPegawaiNegeriSipil ;
hup:agama "Islam" ;
hup:almamater "SMA" ;
hup:bekerja_di_bag hup:PRO ;
hup:jenis_kelamin "P" ;
hup:nama "Alfia Budiwati" ;
hup:nip "480 999 001" ;
hup:tahun_lulus "2005" ;
hup:tanggal_lahir "29/02/1988" ;
hup:tempat_lahir "Depok" ;
hup:tingkat_ijazah "SLTA" .
```

hup:Dani_Hamdani_S_STP

```
  a      hup:Pelaksana ;
hup:agama "Islam" ;
hup:almamater "STPDN" ;
hup:bekerja_di_bag hup:PRO ;
hup:catatan_mutasi "Dinas Tata Kota" ;
hup:golongan "III/b" ;
hup:jenis_kelamin "L" ;
hup:nama "Dani Hamdani S.STP" ;
hup:nip "010 264 839" ;
hup:tahun_lulus "2003" ;
hup:tanggal_lahir "5/02/1980" ;
hup:tempat_lahir "Garut" ;
hup:tingkat_ijazah "S1" .
```

```
hup:retno
  a      hup:Pelaksana ;
  hup:agama "Islam" ;
  hup:almamater "SMA" ;
  hup:bekerja_di_bag hup:PRO ;
  hup:catatan_mutasi "Bag. Umum" ;
  hup:golongan "II/b" ;
  hup:jenis_kelamin "P" ;
  hup:nama "Retno Sustyaningsih" ;
  hup:nip "480 123 296" ;
  hup:tahun_lulus "1992" ;
  hup:tanggal_lahir "01/02/1974" ;
  hup:tempat_lahir "Jakarta" ;
  hup:tingkat_ijazah "SLTA" .

hup:erwin
  a      hup:Pelaksana ;
  hup:agama "Islam" ;
  hup:almamater "UI" ;
  hup:bekerja_di_bag hup:PRO ;
  hup:catatan_mutasi "Bag. Umum" ;
  hup:golongan "II/b" ;
  hup:jenis_kelamin "L" ;
  hup:nama "Erwin Narto" ;
  hup:nip "480 119 637" ;
  hup:tahun_lulus "2008" ;
  hup:tanggal_lahir "22/05/1979" ;
  hup:tempat_lahir "Depok" ;
  hup:tingkat_ijazah "S1" .

hup:ahmad
  a      hup:Pelaksana ;
  hup:agama "Islam" ;
  hup:almamater "STPDN" ;
  hup:bekerja_di_bag hup:PRO ;
  hup:catatan_mutasi "Bag. Umum" ;
  hup:golongan "III/a" ;
  hup:jenis_kelamin "L" ;
  hup:nama "Ahmad S.STP" ;
  hup:nip "010 267 122" ;
```

```

hup:tahun_lulus "2005" ;
hup:tanggal_lahir "27/04/1981" ;
hup:tempat_lahir "Teluk Betung" ;
hup:tingkat_ijazah "S1" .

hup:riswati
  a      hup:Pelaksana ;
hup:agama "Islam" ;
hup:almamater "SD" ;
hup:bekerja_di_bag hup:HUM ;
hup:catatan_mutasi "D D N" ;
hup:golongan "II/a" ;
hup:jenis_kelamin "P" ;
hup:nama "Riswati" ;
hup:nip "010 163 253" ;
hup:tahun_lulus "1971" ;
hup:tanggal_lahir "09/05/1958" ;
hup:tempat_lahir "Purwokerto" ;
hup:tingkat_ijazah "SD" .

```

Infrastruktur.n3

```

# Base: http://mybase
@prefix :      <#> .
@prefix hup:   <http://localhost:8080/portalHumasProtokol/ontology#> .
@prefix rdf123: <http://rdf123.umbc.edu/ns/> .

hup:handycam
  hup:digunakan_di hup:peliputan , hup:keprotokolan ;
hup:digunakan_oleh hup:kodir ;
hup:jumlah "4" ;
hup:nama_barang "Handycam" .

hup:motor_2
  hup:digunakan_oleh hup:kodir ;
hup:jumlah "1" ;
hup:nama_barang "Motor 2" .

hup:motor_1
  hup:digunakan_oleh hup:nasrullah ;

```



```
hup:jumlah "1" ;
hup:nama_barang "Motor 1" .

hup:komputer
  hup:digunakan_di hup:pembuatan_buku , hup:pengelolaan_internet , hup:peliputan ,
hup:pembuatan_advertorial , hup:pembuatan_kliping , hup:pelayanan_pengaduan ;
  hup:jumlah "14" ;
  hup:nama_barang "Komputer" .

hup:mobil_2
  hup:digunakan_di hup:peliputan , hup:talk_show ;
  hup:digunakan_oleh hup:djoko ;
  hup:jumlah "1" ;
  hup:nama_barang "Mobil 2" .

hup:kamera
  hup:digunakan_di hup:peliputan , hup:keprotokolalan ;
  hup:digunakan_oleh hup:kodir ;
  hup:jumlah "4" ;
  hup:nama_barang "Kamera Foto" .

hup:mobil_1
  hup:digunakan_oleh hup:Eko_Herwiyanto_AP ;
  hup:jumlah "1" ;
  hup:nama_barang "Mobil 1" .

hup:motor_4
  hup:digunakan_oleh hup:rusdianto ;
  hup:jumlah "1" ;
  hup:nama_barang "Motor 4" .

hup:motor_3
  hup:digunakan_oleh hup:wewen ;
  hup:jumlah "1" ;
  hup:nama_barang "Motor 3" .

hup:motor_5
  hup:digunakan_oleh hup:djoko ;
  hup:jumlah "1" ;
  hup:nama_barang "Motor 5" .
```

Peranan.n3

```

# Base: http://mybase
@prefix :      <#> .
@prefix hup:   <http://localhost:8080/portalHumasProtokol/ontology#> .
@prefix rdf:   <http://www.w3.org/1999/02/22-rdf-syntax-ns#> .
@prefix rdf123: <http://rdf123.umbc.edu/ns/> .

hup:FH5
    a          hup:Fungsi ;
    hup:deskripsi_per "Pengumpulan informasi kegiatan pemerintahan dan penyusunan
    rilis berita" ;
    hup:dimiliki_fung hup:HUM .

hup:FH6
    a          hup:Fungsi ;
    hup:deskripsi_per "Pengkoordinasian dan hubungan kerja dengan media massa
    kegiatan pemerintah kota" ;
    hup:dimiliki_fung hup:HUM .

hup:FH3
    a          hup:Fungsi ;
    hup:deskripsi_per "Penyiapan bahan petunjuk teknis dalam pengumpulan sumber
    informasi" ;
    hup:dimiliki_fung hup:HUM .

hup:FH4
    a          hup:Fungsi ;
    hup:deskripsi_per "Pengkoordinasian dalam pengendalian informasi" ;
    hup:dimiliki_fung hup:HUM .

hup:FH1
    a          hup:Fungsi ;
    hup:deskripsi_per "Penyusunan rencana kerja Sub Bagian Hubungan Masyarakat
    mengacu pada rencana kerja Bagian Hubungan Masyarakat dan Protokol" ;
    hup:dimiliki_fung hup:HUM .

hup:FH2
    a          hup:Fungsi ;
    hup:deskripsi_per "Pengelolaan data kehumasan sebagai bahan penyusunan kebijakan
    kehumasan pemerintah kota" ;

```

```

hup:dimiliki_fung hup:HUM .

hup:TU2
  a      hup:Tugas ;
  hup:deskripsi_per "Melaksanakan sebagian tugas bagian Hubungan Masyarakat dan
Protokol bidang keprotokolan" ;
  hup:dimiliki_tug hup:PRO .

hup:TU1
  a      hup:Tugas ;
  hup:deskripsi per "Melaksanakan sebagian tugas bagian Hubungan Masyarakat dan
Protokol bidang kehumasan pemerintahan" ;
  hup:dimiliki_tug hup:HUM .

hup:FP3
  a      hup:Fungsi ;
  hup:deskripsi per "Penyiapan bahan koordinasi penerimaan tamu-tamu Pemerintah
Daerah dan cinderamata" ;
  hup:dimiliki_fung hup:PRO .

hup:FP4
  a      hup:Fungsi ;
  hup:deskripsi per "Penyiapan bahan koordinasi keprotokolan penerimaan pejabat
negara" ;
  hup:dimiliki_fung hup:PRO .

hup:FP5
  a      hup:Fungsi ;
  hup:deskripsi per "Penyiapan sarana prasarana dan sumber daya korps musik
Pemerintah Daerah" ;
  hup:dimiliki_fung hup:PRO .

hup:FP6
  a      hup:Fungsi ;
  hup:deskripsi per "Penyusunan agenda pemanduan kegiatan Walikota Wakil Walikota
dan Sekretaris Daerah" ;
  hup:dimiliki_fung hup:PRO .

hup:FP1
  a      hup:Fungsi ;
  hup:deskripsi_per "Penyusunan rencana kerja Sub Bagian Protokol mengacu pada
rencana strategi Setda" ;
  hup:dimiliki_fung hup:PRO .

```

```

hup:FH8
  a      hup:Fungsi ;
        hup:deskripsi per "Pelaksanaan tugas kedinasan lainnya yang diberikan oleh
Kepala Bagian sesuai dengan bidang tugasnya" ;
        hup:dimiliki_fung hup:HUM , hup:PRO .

hup:FP2
  a      hup:Fungsi ;
        hup:deskripsi per "Pengkoordinasian pelaksanaan penyiapan acara penyelenggaraan
upacara rapat dinas penerimaan tamu dan kegiatan resmi lainnya" ;
        hup:dimiliki_fung hup:PRO .

hup:FH7
  a      hup:Fungsi ;
        hup:deskripsi_per "Pengkoordinasian dan pelaksanaan penyusunan laporan dan
evaluasi kegiatan penyelenggaraan Sub Bagian Hubungan Masyarakat" ;
        hup:dimiliki_fung hup:HUM .

```

Kegiatan.n3

```

# Base: http://mybase
@prefix :      <#> .
@prefix hup:   <http://localhost:8080/portalHumasProtokol/ontology#> .
@prefix rdf:   <http://www.w3.org/1999/02/22-rdf-syntax-ns#> .
@prefix rdf123: <http://rdf123.umbc.edu/ns/> .

hup:pembuatan_buku
  a      hup:KegiatanInternal ;
        hup:beranggotakan hup:fathir , hup:nasrullah , hup:ade , hup:retno ;
        hup:deskripsi "Pembuatan Buku Sambutan Walikota dan Wakil" ;
        hup:dimiliki_oleh hup:PRO ;
        hup:dipimpin_keg hup:Dani_Hamdani_S_STP ;
        hup:jenis_kegiatan "harian" ;
        hup:menggunakan_keg hup:komputer ;
        hup:tempat "kantor protokol" .

hup:pengelolaan_internet
  a      hup:KegiatanInternal ;
        hup:beranggotakan hup:fathir , hup:nasrullah , hup:rusmini , hup:rusdianto ,
hup:wewen ;
        hup:deskripsi "Pengelolaan Media Internet" ;

```

```

hup:dimiliki_oleh hup:PRO ;
hup:dipimpin_keg hup:Dani_Hamdani_S_STP ;
hup:jenis_kegiatan "harian" ;
hup:menggunakan_keg hup:komputer ;
hup:tempat "kantor protokol" .

```

hup:peliputan

```

a      hup:KegiatanEksternal ;
hup:beranggotakan hup:nasrullah , hup:kodir , hup:Andri_Setiawan , hup:djoko ;
hup:deskripsi "Peliputan Kegiatan" ;
hup:dimiliki_oleh hup:HUM ;
hup:dipimpin_keg hup:fahmi ;
hup:jenis_kegiatan "harian" ;
hup:menggunakan_keg hup:handycam , hup:komputer , hup:mobil_2 , hup:kamera ;
hup:tempat "tentative" .

```

hup:penyediaan_bacaan

```

a      hup:KegiatanInternal ;
hup:beranggotakan hup:djoko , hup:riswati ;
hup:deskripsi "Penyediaan Bahan Bacaan" ;
hup:dimiliki_oleh hup:HUM ;
hup:dipimpin_keg hup:fahmi ;
hup:jenis_kegiatan "harian" ;
hup:tempat "kantor humas" .

```

hup:talk_show

```

a      hup:KegiatanEksternal ;
hup:beranggotakan hup:nasrullah , hup:rusdianto , hup:shillawati ;
hup:deskripsi "Talk Show Radio" ;
hup:dimiliki_oleh hup:HUM ;
hup:dipimpin_keg hup:fahmi ;
hup:jenis_kegiatan "bulanan" ;
hup:menggunakan_keg hup:mobil_2 ;
hup:tempat "stasiun radio" .

```

hup:pembuatan_advertorial

```

a      hup:KegiatanInternal ;
hup:beranggotakan hup:nasrullah , hup:rusdianto , hup:shillawati ;
hup:deskripsi "Pembuatan Advertorial Pembangunan Depok" ;
hup:dimiliki_oleh hup:HUM ;

```

```

hup:dipimpin_keg hup:fahmi ;
hup:jenis_kegiatan "mingguan" ;
hup:menggunakan_keg hup:komputer ;
hup:tempat "kantor humas" .

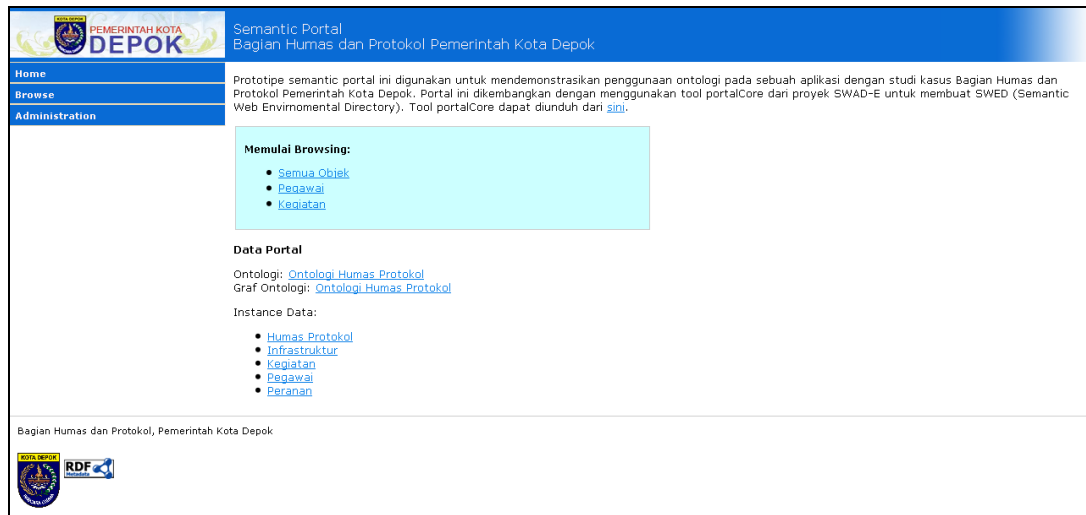
hup:pembuatan_kliping
  a      hup:KegiatanInternal ;
hup:beranggotakan hup:erwan , hup:rusmini , hup:hartikah , hup:Andri_Setiawan ;
hup:deskripsi "Pembuatan Kliping Berita" ;
hup:dimiliki_oleh hup:HUM ;
hup:dipimpin_keg hup:fahmi ;
hup:jenis_kegiatan "harian" ;
hup:menggunakan_keg hup:komputer ;
hup:tempat "kantor humas" .

hup:keprotokolan
  a      hup:KegiatanEksternal ;
hup:beranggotakan hup:fathir , hup:Fajar_Adi_Putra , hup:ade , hup:alfia ,
hup:retno , hup:erwin , hup:ahmad ;
hup:deskripsi "Keprotokolan Pemkot Depok" ;
hup:dimiliki_oleh hup:PRO ;
hup:dipimpin_keg hup:Dani_Hamdani_S_STP ;
hup:jenis_kegiatan "mingguan" ;
hup:menggunakan_keg hup:kamera , hup:handycam ;
hup:tempat "kantor walikota Depok" .

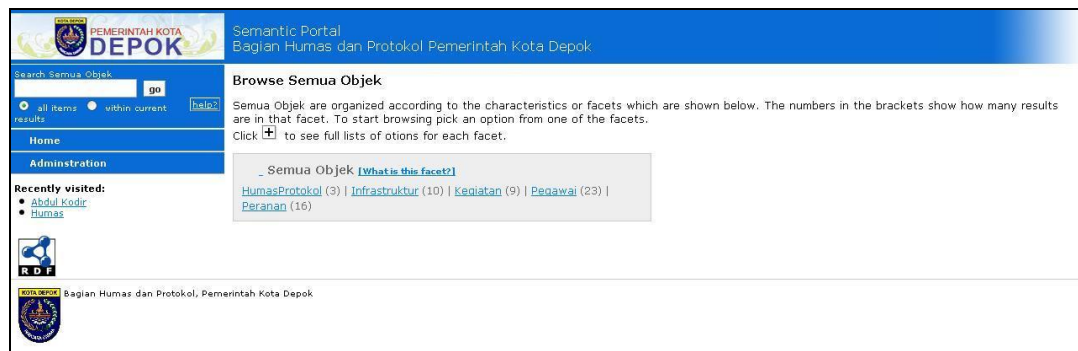
hup:pelayanan_pengaduan
  a      hup:KegiatanInternal ;
hup:beranggotakan hup:fathir , hup:nasrullah , hup:rusmini , hup:minar ,
hup:hartikah ;
hup:deskripsi "Pelayanan Pengaduan" ;
hup:dimiliki_oleh hup:HUM ;
hup:dipimpin_keg hup:fahmi ;
hup:jenis_kegiatan "harian" ;
hup:menggunakan_keg hup:komputer ;
hup:tempat "kantor humas" .

```

LAMPIRAN D – TAMPILAN PORTAL



Gambar D.1 Halaman Utama Portal



Gambar D.2 Halaman untuk Filter Semua Objek

Semantic Portal
Bagian Humas dan Protokol Pemerintah Kota Depok

Search Pegawai: go

all items | within current | help?

Home

Administration

Recently visited:

- Abdul Kodir
- Humas

Browse Pegawai

Pegawai are organized according to the characteristics or facets which are shown below. The numbers in the brackets show how many results are in that facet. To start browsing pick an option from one of the facets. Click to see full lists of options for each facet.

_ Nama [What is this facet?]
 A* (5) | D* (3) | E* (3) | F* (2) | M* (2) | N* (1) | R* (5) [More options](#)

_ Bagian [What is this facet?]
 Humas (12) | Humas (12) | Humas Protokol (23) | Humas Protokol (23) | Protokol (10) | Protokol (10)

_ Jenis Pegawai [What is this facet?]
 NonPegawaiNegeriSipil (5) | PegawaiNegeriSipil (18)

_ Kegiatan [What is this facet?]
 Keprotokolan Pemkot Depok (8) | Pelayanan Pengaduan (6) | Peliputan Kegiatan (5) | Pembuatan Advertorial Pembangunan Depok (4) | Pembuatan Buku Sambutan Walikota dan Wakil (5) | Pembuatan Kliping Berita (5) | Pengelolaan Media Internet (6) [More options](#)

Bagian Humas dan Protokol, Pemerintah Kota Depok

Gambar D.3 Halaman untuk *Filter* Berdasarkan Pegawai

Semantic Portal
Bagian Humas dan Protokol Pemerintah Kota Depok

Search Kegiatan: go

all items | within current | help?

Home

Administration

Recently visited:

- Abdul Kodir
- Humas

Browse Kegiatan

Kegiatan are organized according to the characteristics or facets which are shown below. The numbers in the brackets show how many results are in that facet. To start browsing pick an option from one of the facets. Click to see full lists of options for each facet.

_ Nama Kegiatan [What is this facet?]
 K* (1) | P* (7) | T* (1)

_ Bagian [What is this facet?]
 Humas (6) | Humas Protokol (9) | Protokol (3)

_ Jenis Kegiatan [What is this facet?]
 KegiatanEksternal (3) | KegiatanInternal (6)

Bagian Humas dan Protokol, Pemerintah Kota Depok

Gambar D.4 Halaman untuk *Filter* Berdasarkan Kegiatan

Semantic Portal
Bagian Humas dan Protokol Pemerintah Kota Depok

Search Pegawai: go

all items | within current | help?

Home

Start Browsing Again

Last Search

View Raw

Visualize Links

Record 2 of 5 | [Back to Results](#) << [Previous](#) | [Next](#) >>

Ade Hukmawan

Pelaksana

Agama : Islam
 Golongan : II/a
 Jenis Kelamin : L
 NIP : 480 148 227
 Almamater : STM
 Tahun Lulus : 1997
 Tingkat Ijazah : SLTA
 Tempat Lahir : Subang
 Tanggal Lahir : 09/04/1981
 Catatan Mutasi : Bag. Umum

Keterangan

Afiliasi	<ul style="list-style-type: none"> Humas Protokol Protokol
Kegiatan	<ul style="list-style-type: none"> Keprotokolan Pemkot Depok Pembuatan Buku Sambutan Walikota dan Wakil

Recently visited:

- Abdul Kodir
- Humas
- Muhammad Fahmi ST, M.Si
- Hinar Roslana
- Ade Hukmawan

Browse

- [Pegawai](#)
- [Kegiatan](#)
- [Semua Objek](#)

Other link

- [Silus Pemerintah Kota Depok](#)

Bagian Humas dan Protokol, Pemerintah Kota Depok

Gambar D.5 Halaman Pegawai

PEMERINTAH KOTA DEPOK Semantic Portal
Bagian Humas dan Protokol Pemerintah Kota Depok

Search Pegawai go
all items within current [help?](#)
results

Handycam
Jumlah : 4

Keterangan

Kegiatan	<ul style="list-style-type: none"> Keprotokolan Pemkot Depok Peliputan Kegiatan
Penanggung Jawab	<ul style="list-style-type: none"> Abdul Kodir

Recently visited:

- Minar Rosdiana
- Ade Hukmawan
- Humas Protokol
- Keprotokolan Pemkot Depok
- Handycam

Bagian Humas dan Protokol, Pemerintah Kota Depok

Browse

- Pegawai
- Kegiatan
- Semua Objek

Other link

- Situs Pemerintah Kota Depok

Gambar D.6 Halaman Infrastruktur

PEMERINTAH KOTA DEPOK Semantic Portal
Bagian Humas dan Protokol Pemerintah Kota Depok

Search Pegawai go
all items within current [help?](#)
results

Humas Protokol

Keterangan

Kepala	Eko Herwiranto AP
Daftar Kegiatan	<ul style="list-style-type: none"> Keprotokolan Pemkot Depok Pelayanan Penerimaan Peliputan Kegiatan Pembuatan Advertorial Pembangunan Depok Pembuatan Buku Sambutan Walikota dan Wakil Pembuatan Kliping Berita Pengelolaan Media Internet Penyediaan Bahan Bacaan Talk Show Radio
Tugas	<ul style="list-style-type: none"> Melaksanakan sebagian tugas bagian Hubungan Masyarakat dan Protokol bidang kehumasan pemerintahan Melaksanakan sebagian tugas bagian Hubungan Masyarakat dan Protokol bidang keprotokolan
Fungsi	<ul style="list-style-type: none"> Pelaksanaan tugas kedinasan lainnya yang diberikan oleh Kepala Bagian sesuai dengan bidang tugasnya Pengelolaan data kehumasan sebagai bahan penyusunan kebijakan kehumasan pemerintah kota Pengkoordinasian dalam penendalian informasi Pengkoordinasian dan hubungan kerja dengan media massa kegiatan pemerintahan kota Pengkoordinasian dan pelaksanaan penyusunan laporan dan evaluasi kegiatan penyelenggaraan Sub Bagian Hubungan Masyarakat Pengkoordinasian pelaksanaan penyiapan acara penyelenggaraan upacara rapat dinas penerimaan tamu dan kegiatan resmi lainnya Penyempulan informasi kegiatan pemerintahan dan penyusunan rilis berita Penyiapan bahan koordinasi keprotokolan penerimaan pejabat negara Penyiapan bahan koordinasi penerimaan tamu tamu Pemerintah Daerah dan cinderamata Penyiapan bahan petunjuk teknis dalam penugulan sumber informasi Penyiapan sarana prasarana dan sumber daya korps musik Pemerintah Daerah Penyusunan agenda pemanduan kegiatan Walikota Wakil Walikota dan Sekretaris Daerah Penyusunan rencana kerja Sub Bagian Hubungan Masyarakat mengacu pada rencana kerja Bagian Hubungan Masyarakat dan Protokol Penyusunan rencana kerja Sub Bagian Protokol mengacu pada rencana strategi Setda
Daftar Pegawai	<ul style="list-style-type: none"> Abdul Kodir Ade Hukmawan Ahmad S.STP Alfa Budiwati Andri Setiawan Dani Hamdani S.STP Disko Wahyudi Dra. Hartikah Eko Herwiranto AP Erwan Mindaya Erwin Narto Fajar Adi Putra Fahri Fajar Sidq S.STP Minar Rosdiana Muhammad Fahmi ST. M.Si Nasrullah R. Tranto Dwi Hardjono SH Retro Sustraningsih Riswati Rusdianto Rusmini Shillawati Weweh Sajali

Recently visited:

- Humas
- Muhammad Fahmi ST. M.Si
- Minar Rosdiana
- Ade Hukmawan
- Humas Protokol

Bagian Humas dan Protokol, Pemerintah Kota Depok

Browse

- Pegawai
- Kegiatan
- Semua Objek

Other link

- Situs Pemerintah Kota Depok

Gambar D.7 Halaman Humas Protokol

PEMERINTAH KOTA DEPOK Semantic Portal
Bagian Humas dan Protokol Pemerintah Kota Depok

Search Pegawai:

all items within current results

Home
Start Browsing Again
Last Search
View Raw
Visualize Links

Recently visited:

- Humas Protokol
- Keprotokolan Pemkot Depok
- Handycam
- Protokol
- Penyiapan bahan koordinasi keprotokolan penerimaan pejabat negara

Bagian Humas dan Protokol, Pemerintah Kota Depok

Fungsi
Deskripsi : Penyiapan bahan koordinasi keprotokolan penerimaan pejabat negara

Keterangan

Afiliasi	<ul style="list-style-type: none"> • Humas Protokol • Protokol
----------	--

Browse

- [Pegawai](#)
- [Kegiatan](#)
- [Semua Objek](#)

Other link

- [Situs Pemerintah Kota Depok](#)

Gambar D.8 Halaman Fungsi Penyiapan Bahan Koordinasi Keprotokolan Penerimaan Pejabat Negara

PEMERINTAH KOTA DEPOK Semantic Portal
Bagian Humas dan Protokol Pemerintah Kota Depok

Search Pegawai:

all items within current results

Home
Start Browsing Again
Last Search
View Raw
Visualize Links

Recently visited:

- [Muhammad Fahmi, ST., M.Si](#)
- [Minar Rosdiana](#)
- [Ade Hukmawan](#)
- [Humas Protokol](#)
- [Keprotokolan Pemkot Depok](#)

Bagian Humas dan Protokol, Pemerintah Kota Depok

Keprotokolan Pemkot Depok
Kegiatan Eksternal

Jenis Kegiatan : mingguan
Tempat : kantor walikota Depok

Keterangan

Afiliasi	<ul style="list-style-type: none"> • Humas Protokol • Protokol
Pimpinan	Dani Hamdani S, STP
Anggota	<ul style="list-style-type: none"> • Ade Hukmawan • Ahmad S, STP • Alifa Budiwati • Erwin Narto • Fajar Adi Putra • Fathir Fajar Sidig S, STP • Retno Sustvaningsih
Menggunakan Infrastruktur	<ul style="list-style-type: none"> • Handycam • Kamera Foto

Browse

- [Pegawai](#)
- [Kegiatan](#)
- [Semua Objek](#)

Other link

- [Situs Pemerintah Kota Depok](#)

Gambar D.9 Halaman Kegiatan Keprotokolan Pemkot Depok

Administration area

[Home](#)
[Logout](#)

SWAD-E Portal: Add Data Kegiatan

Nama Kegiatan (Deskripsi)

Jenis Kegiatan

Bagian

Tempat

Anggota

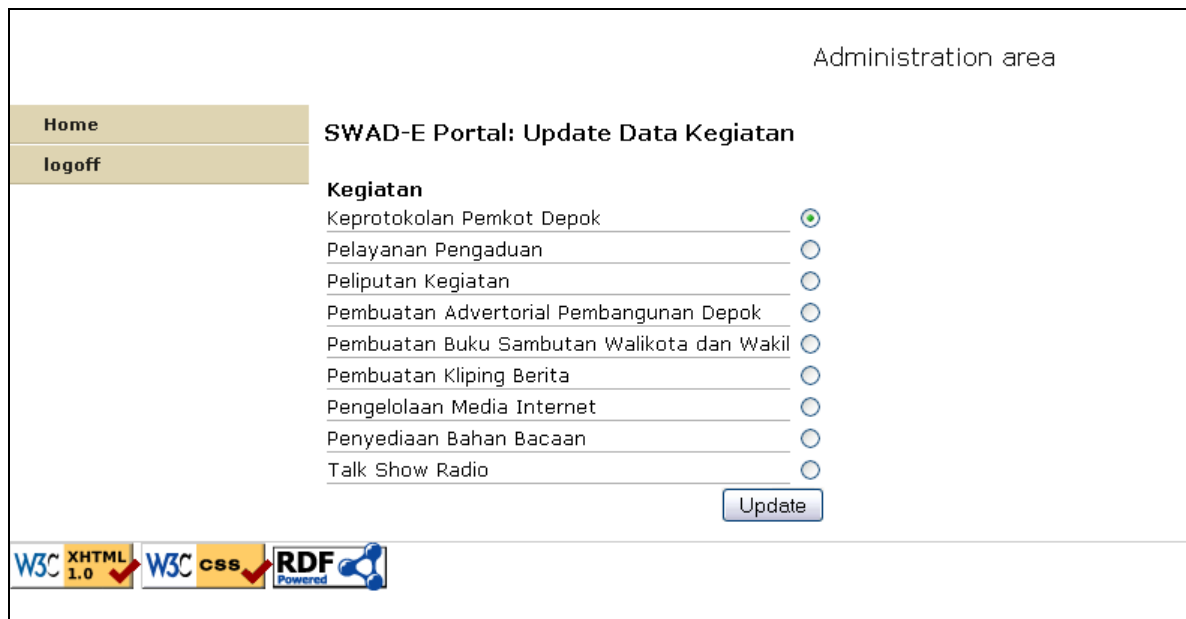
Abdul Kodir	<input type="checkbox"/>
Ade Hukmawan	<input type="checkbox"/>
Ahmad S.STP	<input type="checkbox"/>
Alfa Budiwati	<input type="checkbox"/>
Andri Setiawan	<input type="checkbox"/>
Dani Hamdani S.STP	<input type="checkbox"/>
Djoko Wahyudi	<input type="checkbox"/>
Dra. Hartikah	<input type="checkbox"/>
Eko Herwiyanto AP	<input type="checkbox"/>
Erwan Mindaya	<input type="checkbox"/>
Erwin Narto	<input type="checkbox"/>
Fajar Adi Putra	<input type="checkbox"/>
Fathir Fajar Sidiq S.STP	<input type="checkbox"/>
Minar Rosdiana	<input type="checkbox"/>
Muhammad Fahmi ST. M.Si	<input type="checkbox"/>
Nasrullah	<input type="checkbox"/>
R. Tranto Dwi Hardjono SH	<input type="checkbox"/>
Retno Sustyaningsih	<input type="checkbox"/>
Riswati	<input type="checkbox"/>
Rusdianto	<input type="checkbox"/>
Rusmini	<input type="checkbox"/>
Shillawati	<input type="checkbox"/>
Wewen Sajali	<input type="checkbox"/>

Infrastruktur

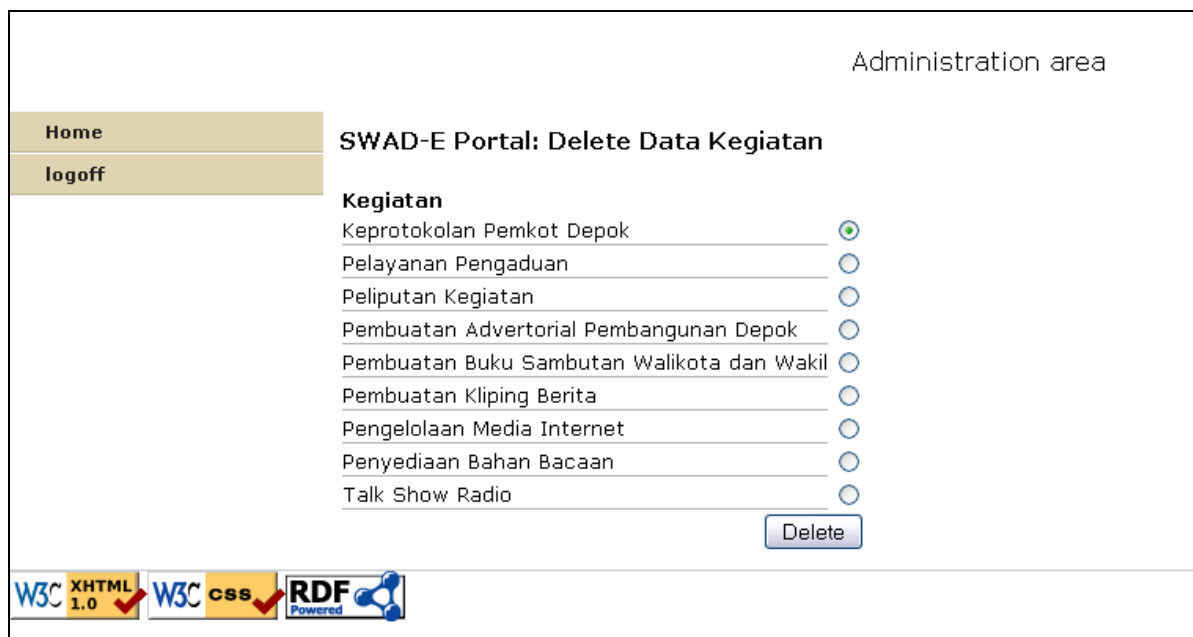
Handycam	<input type="checkbox"/>
Kamera Foto	<input type="checkbox"/>
Komputer	<input type="checkbox"/>
Mobil 1	<input type="checkbox"/>
Mobil 2	<input type="checkbox"/>
Motor 1	<input type="checkbox"/>
Motor 2	<input type="checkbox"/>
Motor 3	<input type="checkbox"/>
Motor 4	<input type="checkbox"/>
Motor 5	<input type="checkbox"/>

W3C XHTML 1.0 W3C CSS RDF

Gambar D.10 Add Data Kegiatan



Gambar D.11 Halaman *Update* Kegiatan



Gambar D.12 Halaman *Delete* Kegiatan