

LAMPIRAN A : DATA HASIL SURVEI

Tabel A.1 Daftar Pertanyaan Survei ke Bagian Humas dan Protokol Pemerintah Kota Depok

Infrastruktur
1. Apa saja jenis infrastruktur yang ada? Berapa jumlahnya masing-masing?
2. Apa ada ketentuan siapa yang pakai atau tidak? Kalau ada, siapa yang menggunakan masing-masing jenis infrastruktur?
3. Dipakai di kegiatan apa saja? Dan sub bagian apa saja?
4. Apa ada merk/tipe tertentu yang digunakan dan tahun pengadaannya kapan?
Kegiatan
1. Pimpinan kegiatan siapa? Anggotanya siapa saja?
2. Tipe kegiatan? Deskripsi? Tempat dan tanggal dilaksanakan?
Pegawai
1. Apakah jumlah pegawai yang sudah diberikan sudah mencakup keseluruhan pegawai bagian humas dan protokol?
2. Jika sudah, siapa saja yang bekerja di masing-masing sub bagian? Berapa jumlah pegawai di masing-masing sub bagian?

Tabel A.2 Data Kepegawaian Bagian Humas dan Protokol Pemerintah Kota Depok

NO	NAMA	NIP	PANGKAT		JABATAN		SIB	MASA KERJA GOL	MASA KERJA KESI		PENDIDIKAN		TEMPAT TANGGAL LAHIR	USIA (TH)	AGAMA	CATATAN KEPEGAWAIAN	JENIS KELAMIN	KET			
			GOI	TMT GOI	NAMA	TMT			THN	BLN	THN	BLN							NAMA	LULUS TH	TK LAZAH
1	Eko Herwanto, AP	010 249 559	IIIId	01-10-2005	Ketabg Humas dan Protokol	31-12-2008					ADUMI	1988	500	STIAM	2006	S2	Boydali, 11-08-1972	36	Islam	Sekam KERPACAYAN	L
2	Muhammad Fahmi, ST, M.Si	480 126 069	IIIc	01-10-2008	Ketabg Humas	31-12-2008								STIAM	2005	S2	Ujung Pandang, 02-02-1974	34	Islam	Bag. Infokom	L
3	Dani Handani, S.STP	010 264 839	IIIb	01-10-2008	Kesabag Protokol	31-12-2008					Diklat Pm IV 2003			STPDN	2003	S1	Gombong, 05-02-1980	28	Islam	Dinas Tia Kala	L
4	Rusmini	010 175 817	IIIb	01-04-2007	Palaksana	-								SMA	1992	S1	Balige, 22-08-1961	47	Islam	D.D.N	P
5	Mhar Restiana	400 033 131	IIIb	01-04-2006	Palaksana	-								SMA	1983	SLTA	Boyer, 15-11-1962	46	Protestan	Kab. Semarang	P
6	Dra. Hartika	480 123 288	IIIb	01-04-2007	Palaksana	-								UNPAD	1992	S1	Boyer, 15-04-1965	43	Islam	Bag. Keuangan	P
7	Ahmad, S.STP	010 267 122	IIIa	01-12-2001	Palaksana	-								STPDN	2005	S1	Teluk Betung, 27-04-1981	27	Islam	Bag. Umum	L
8	Fahri Fajar Siddiq, S.STP	010 268 932	IIIa	01-12-2002	Palaksana	-								STPDN	2006	S1	Boyer, 22-06-1984	24	Islam	Bag. Umum	L
9	R. Tranto Dwi Handono, SH	480 148 203	IIIa	01-04-2006	Palaksana	-								UNITAG	1996	S1	Purwodadi, 31-05-1969	39	Islam	Bag. Umum	L
10	Nasrullah	480 133 066	IIIc	01-01-2005	Palaksana	-								BSI	2001	D3	Jakarta, 03-07-1976	30	Islam	Kec. Sukmajaya	L
11	Shilwanati	480 145 936	IIIc	01-04-2006	Palaksana	-								UI	2003	D3	Jakarta, 30-03-1982	26	Islam	-	P
12	Ewin Narto	480 119 637	IIIb	01-12-2001	Palaksana	-								UI	2008	S1	Depok, 22-06-1979	29	Islam	Bag. Umum	L
13	Ratno Susyaringasih	480 123 296	IIIb	01-12-2002	Palaksana	-								SMA	1992	SLTA	Jakarta, 01-02-1974	34	Islam	Bag. Umum	P
14	Djoko Wahyudi	160 033 051	IIIa	01-04-1988	Palaksana	-								SD	1972	SD	Jakarta, 10-03-1966	50	Islam	Depnaker	L
15	Riswati	010 632 253	IIIa	01-04-1999	Palaksana	-								SD	1971	SD	Purwokerto, 09-05-1968	50	Islam	D.D.N	P
16	Ewan Mindaya	480 126 143	IIIa	01-12-2003	Palaksana	-								SMA	1985	SLTA	Boyer, 04-08-1965	43	Islam	-	L
17	Ade Hukmanan	480 148 227	IIIa	01-04-2006	Palaksana	-								STIA	1997	SLTA	Sudang, 09-04-1981	27	Islam	Bag. Umum	L
18	Abdul Kodir	480 174 487	IIIa	01-12-2007	Palaksana	-								SMA	1997	SLTA	Boyer, 25-07-1976	30	Islam	Kec. Sawangan	L

DAFTAR URUT KEPANGKATAN DIRU PEKAWAI
BAGIAN HUMAS DAN PROTOKOL
SETDA KOTA DEPOK
PERIODE JANUARI 2009

Depok, Januari 2009
Kepala Bagian Humas dan Protokol
Setda Kota Depok

EKOHERWANTO, AP
PENATA TK. I
NIP. 010 249 559

Tabel A.3 Data Kegiatan Bagian Humas dan Protokol Pemerintah Kota Depok

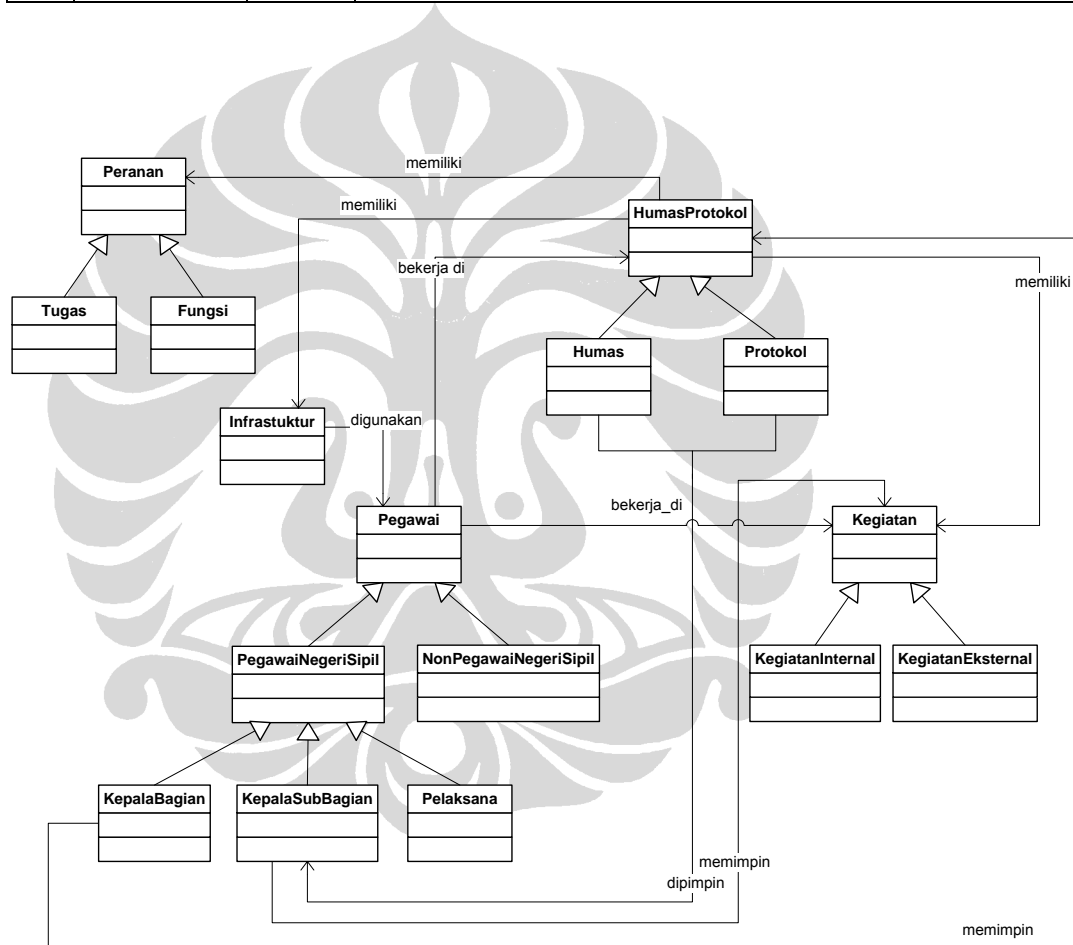
No.	Nama	Tipe	Subbagian	Pemimpin	Anggota	Jenis	Tempat
1	Peliputan Kegiatan	Eksternal	Humas	Muhammad Fahmi, ST. M. SI	Abdul Kodir, Andri Setiawan, Djoko Wahyudi, Nasrullah	Kegiatan Harian	Tentative
2	Talk Show Radio	Eksternal	Humas	Muhammad Fahmi, ST. M. SI	Shiliwati, Nasrullah, Rusdianto	Kegiatan Bulanan	Stasiun Radio
3	Penyediaan Bahan Bacaan	Internal	Humas	Muhammad Fahmi, ST. M. SI	Djoko Wahyudi, Riswati	Kegiatan Harian	Kantor Humas Protokol
4	Pembuatan Kliping Berita	Internal	Humas	Muhammad Fahmi, ST. M. SI	Rusmini, Erwan Mindaaya, Siti Hartika, Andri Setiawan	Kegiatan Harian	Kantor Humas Protokol
5	Pembuatan Advertorial Pembangunan Depok	Internal	Humas	Muhammad Fahmi, ST. M. SI	Nasrullah, Shiliwati, Rusdianto	Kegiatan Mingguan/Bulanan	Kantor Humas Protokol
6	Pelayanan Pengaduan	Internal	Humas	Muhammad Fahmi, ST. M. SI	Hartika, Fathir Fajar Sidik, Nasrullah, Rusmini, Minar Rosdiana	Kegiatan Harian	Kantor Humas Protokol
7	Keprotokolian Pemkot Depok	Eksternal	Protokol	Dani Hamdani, S. STP	Retno Sustianingsih, Alfa Budiwati, Fajar Adiputra, Fathir Fajar Sidik, Erwin Narto, Ade Hukmawan, Ahmad Fajar Adi Putra	Kegiatan Mingguan/Bulanan	
8	Pembuatan Buku Sambutan Walikota dan Wakil	Internal	Protokol	Dani Hamdani, S. STP	Fathir Fajar Sidik, Nasrullah, Ade Hukmawan, Retno Sustianingsih	Kegiatan Harian	Kantor Humas Protokol
9	Pengelolaan Media Internet	Internal	Protokol	Dani Hamdani, S. STP	Rusdianto, Fathir Fajar Sidik, Wewen Sajali, Nasrullah, Rusmini		

Data Kegiatan Bagian Humas Protokol Pemerintah Kota Depok

Tabel A.4 Data Infrastruktur Bagian Humas dan Protokol Pemerintah Kota Depok

Data Infrastruktur Bagian Humas Protokol Pemerintah Kota Depok

No.	Nama	Jumlah	Pengguna
1	Handycam	4	Abdul Kodir
2	Komputer	14	
3	Kamera Foto	4	Abdul Kodir
4	Mobil	2	Kepala Bagian, Tim Liputan dan Protokol
5	Motor	5	Nasrullah, Abdul Kodir, Djoko Wahyudi, Rusdianto, Wewen Sajali



Gambar A.1 Ontologi yang Diajukan ke Bagian Humas Protokol Pemerintah Kota Depok

LAMPIRAN B : KODE ONTOLOGI

```

<?xml version="1.0"?>
<rdf:RDF
  xmlns:rdf="http://www.w3.org/1999/02/22-rdf-syntax-ns#"
  xmlns:owl="http://www.w3.org/2002/07/owl#"
  xmlns:xsd="http://www.w3.org/2001/XMLSchema#"
  xmlns="http://localhost:8080/portalHumasProtokol/ontology-01#"
  xmlns:hup="http://localhost:8080/portalHumasProtokol/ontology#"
  xmlns:rdfs="http://www.w3.org/2000/01/rdf-schema#"
  xml:base="http://localhost:8080/portalHumasProtokol/ontology-01">
  <owl:Ontology rdf:about="">
    <owl:versionInfo rdf:datatype="http://www.w3.org/2001/XMLSchema#string"
    ></owl:versionInfo>
  </owl:Ontology>
  <owl:Class rdf:about="http://localhost:8080/portalHumasProtokol/ontology#Pelaksana">
    <owl:disjointWith>
      <owl:Class
rdf:about="http://localhost:8080/portalHumasProtokol/ontology#KepalaSubBagian"/>
    </owl:disjointWith>
    <owl:disjointWith>
      <owl:Class
rdf:about="http://localhost:8080/portalHumasProtokol/ontology#KepalaBagian"/>
    </owl:disjointWith>
    <rdfs:subClassOf>
      <owl:Class
rdf:about="http://localhost:8080/portalHumasProtokol/ontology#PegawaiNegeriSipil"/>
    </rdfs:subClassOf>
    <rdfs:label rdf:datatype="http://www.w3.org/2001/XMLSchema#string"
    >Pelaksana</rdfs:label>
  </owl:Class>
  <owl:Class
rdf:about="http://localhost:8080/portalHumasProtokol/ontology#Infrastruktur">
    <rdfs:label rdf:datatype="http://www.w3.org/2001/XMLSchema#string"
    >Infrastruktur</rdfs:label>
    <rdfs:subClassOf>
      <owl:Restriction>
        <owl:onProperty>
          <owl:ObjectProperty
rdf:about="http://localhost:8080/portalHumasProtokol/ontology#digunakan_di"/>
        </owl:onProperty>

```

```

    <owl:someValuesFrom>
      <owl:Class
rdf:about="http://localhost:8080/portalHumasProtokol/ontology#Kegiatan"/>
    </owl:someValuesFrom>
  </owl:Restriction>
</rdfs:subClassOf>
<rdfs:subClassOf>
  <owl:Restriction>
    <owl:someValuesFrom>
      <owl:Class
rdf:about="http://localhost:8080/portalHumasProtokol/ontology#Pegawai"/>
    </owl:someValuesFrom>
    <owl:onProperty>
      <owl:ObjectProperty
rdf:about="http://localhost:8080/portalHumasProtokol/ontology#digunakan_oleh"/>
    </owl:onProperty>
  </owl:Restriction>
</rdfs:subClassOf>
<rdfs:subClassOf rdf:resource="http://www.w3.org/2002/07/owl#Thing"/>
<owl:disjointWith>
  <owl:Class
rdf:about="http://localhost:8080/portalHumasProtokol/ontology#Kegiatan"/>
</owl:disjointWith>
<owl:disjointWith>
  <owl:Class
rdf:about="http://localhost:8080/portalHumasProtokol/ontology#Peranan"/>
</owl:disjointWith>
<owl:disjointWith>
  <owl:Class
rdf:about="http://localhost:8080/portalHumasProtokol/ontology#HumasProtokol"/>
</owl:disjointWith>
<owl:disjointWith>
  <owl:Class
rdf:about="http://localhost:8080/portalHumasProtokol/ontology#Pegawai"/>
</owl:disjointWith>
</owl:Class>
<owl:Class rdf:about="http://localhost:8080/portalHumasProtokol/ontology#Tugas">
  <owl:disjointWith>
    <owl:Class
rdf:about="http://localhost:8080/portalHumasProtokol/ontology#Fungsi"/>
  </owl:disjointWith>
<rdfs:subClassOf>
  <owl:Class
rdf:about="http://localhost:8080/portalHumasProtokol/ontology#Peranan"/>

```

```

</rdfs:subClassOf>
<rdfs:label rdf:datatype="http://www.w3.org/2001/XMLSchema#string"
>Tugas</rdfs:label>
</owl:Class>
<owl:Class
rdf:about="http://localhost:8080/portalHumasProtokol/ontology#HumasProtokol">
<rdfs:label rdf:datatype="http://www.w3.org/2001/XMLSchema#string"
>HumasProtokol</rdfs:label>
<rdfs:subClassOf>
<owl:Restriction>
<owl:onProperty>
<owl:ObjectProperty
rdf:about="http://localhost:8080/portalHumasProtokol/ontology#memiliki"/>
</owl:onProperty>
<owl:allValuesFrom>
<owl:Class
rdf:about="http://localhost:8080/portalHumasProtokol/ontology#Kegiatan"/>
</owl:allValuesFrom>
</owl:Restriction>
</rdfs:subClassOf>
<owl:disjointWith>
<owl:Class
rdf:about="http://localhost:8080/portalHumasProtokol/ontology#Peranan"/>
</owl:disjointWith>
<rdfs:subClassOf>
<owl:Restriction>
<owl:allValuesFrom>
<owl:Class
rdf:about="http://localhost:8080/portalHumasProtokol/ontology#Peranan"/>
</owl:allValuesFrom>
<owl:onProperty>
<owl:ObjectProperty
rdf:about="http://localhost:8080/portalHumasProtokol/ontology#memiliki_per"/>
</owl:onProperty>
</owl:Restriction>
</rdfs:subClassOf>
<rdfs:subClassOf>
<owl:Restriction>
<owl:allValuesFrom>
<owl:Class
rdf:about="http://localhost:8080/portalHumasProtokol/ontology#KepalaBagian"/>
</owl:allValuesFrom>
<owl:onProperty>

```

```

    <owl:ObjectProperty
rdf:about="http://localhost:8080/portalHumasProtokol/ontology#dipimpin"/>
    </owl:onProperty>
    </owl:Restriction>
</rdfs:subClassOf>
<owl:disjointWith>
    <owl:Class
rdf:about="http://localhost:8080/portalHumasProtokol/ontology#Pegawai"/>
    </owl:disjointWith>
    <owl:disjointWith
rdf:resource="http://localhost:8080/portalHumasProtokol/ontology#Infrastruktur"/>
    <rdfs:subClassOf rdf:resource="http://www.w3.org/2002/07/owl#Thing"/>
    <owl:disjointWith>
    <owl:Class
rdf:about="http://localhost:8080/portalHumasProtokol/ontology#Kegiatan"/>
    </owl:disjointWith>
    <rdfs:subClassOf>
    <owl:Restriction>
    <owl:onProperty>
    <owl:ObjectProperty
rdf:about="http://localhost:8080/portalHumasProtokol/ontology#mempekerjakan"/>
    </owl:onProperty>
    <owl:allValuesFrom>
    <owl:Class
rdf:about="http://localhost:8080/portalHumasProtokol/ontology#Pegawai"/>
    </owl:allValuesFrom>
    </owl:Restriction>
</rdfs:subClassOf>
</owl:Class>
    <owl:Class
rdf:about="http://localhost:8080/portalHumasProtokol/ontology#PegawaiNegeriSipil">
    <owl:disjointWith>
    <owl:Class
rdf:about="http://localhost:8080/portalHumasProtokol/ontology#NonPegawaiNegeriSipil"/>
    </owl:disjointWith>
    <rdfs:label rdf:datatype="http://www.w3.org/2001/XMLSchema#string"
>PegawaiNegeriSipil</rdfs:label>
    <rdfs:subClassOf>
    <owl:Class
rdf:about="http://localhost:8080/portalHumasProtokol/ontology#Pegawai"/>
    </rdfs:subClassOf>
</owl:Class>
    <owl:Class
rdf:about="http://localhost:8080/portalHumasProtokol/ontology#NonPegawaiNegeriSipil">

```



```

    <owl:disjointWith
rdf:resource="http://localhost:8080/portalHumasProtokol/ontology#PegawaiNegeriSipil"/>
    <rdfs:label rdf:datatype="http://www.w3.org/2001/XMLSchema#string"
>NonPegawaiNegeriSipil</rdfs:label>
    <rdfs:subClassOf>
        <owl:Class
rdf:about="http://localhost:8080/portalHumasProtokol/ontology#Pegawai"/>
        </rdfs:subClassOf>
    </owl:Class>
    <owl:Class
rdf:about="http://localhost:8080/portalHumasProtokol/ontology#KepalaSubBagian">
        <owl:disjointWith
rdf:resource="http://localhost:8080/portalHumasProtokol/ontology#Pelaksana"/>
        <owl:disjointWith>
            <owl:Class
rdf:about="http://localhost:8080/portalHumasProtokol/ontology#KepalaBagian"/>
            </owl:disjointWith>
            <rdfs:label rdf:datatype="http://www.w3.org/2001/XMLSchema#string"
>KepalaSubBagian</rdfs:label>
            <rdfs:subClassOf
rdf:resource="http://localhost:8080/portalHumasProtokol/ontology#PegawaiNegeriSipil"/>
            <rdfs:subClassOf>
                <owl:Restriction>
                    <owl:allValuesFrom>
                        <owl:Class
rdf:about="http://localhost:8080/portalHumasProtokol/ontology#Humas"/>
                        </owl:allValuesFrom>
                    <owl:onProperty>
                        <owl:ObjectProperty
rdf:about="http://localhost:8080/portalHumasProtokol/ontology#memimpin"/>
                        </owl:onProperty>
                    </owl:Restriction>
                </rdfs:subClassOf>
            <rdfs:subClassOf>
                <owl:Restriction>
                    <owl:onProperty>
                        <owl:ObjectProperty
rdf:about="http://localhost:8080/portalHumasProtokol/ontology#memimpin"/>
                        </owl:onProperty>
                    <owl:allValuesFrom>
                        <owl:Class
rdf:about="http://localhost:8080/portalHumasProtokol/ontology#Protokol"/>
                        </owl:allValuesFrom>
                    </owl:Restriction>
                </rdfs:subClassOf>
            </owl:Class>
        </owl:Class>
    </owl:Class>

```

```

</rdfs:subClassOf>
<rdfs:subClassOf>
  <owl:Restriction>
    <owl:onProperty>
      <owl:ObjectProperty
rdf:about="http://localhost:8080/portalHumasProtokol/ontology#memimpin_keg"/>
      </owl:onProperty>
      <owl:allValuesFrom>
        <owl:Class
rdf:about="http://localhost:8080/portalHumasProtokol/ontology#Kegiatan"/>
        </owl:allValuesFrom>
      </owl:Restriction>
    </rdfs:subClassOf>
  </owl:Class>
  <owl:Class rdf:about="http://localhost:8080/portalHumasProtokol/ontology#Kegiatan">
    <rdfs:subClassOf>
      <owl:Restriction>
        <owl:allValuesFrom
rdf:resource="http://localhost:8080/portalHumasProtokol/ontology#HumasProtokol"/>
        <owl:onProperty>
          <owl:ObjectProperty
rdf:about="http://localhost:8080/portalHumasProtokol/ontology#dimiliki_oleh"/>
          </owl:onProperty>
        </owl:Restriction>
      </rdfs:subClassOf>
      <rdfs:subClassOf>
        <owl:Restriction>
          <owl:allValuesFrom
rdf:resource="http://localhost:8080/portalHumasProtokol/ontology#KepalaSubBagian"/>
          <owl:onProperty>
            <owl:ObjectProperty
rdf:about="http://localhost:8080/portalHumasProtokol/ontology#dipimpin_keg"/>
            </owl:onProperty>
          </owl:Restriction>
        </rdfs:subClassOf>
      <rdfs:subClassOf rdf:resource="http://www.w3.org/2002/07/owl#Thing"/>
      <owl:disjointWith>
        <owl:Class
rdf:about="http://localhost:8080/portalHumasProtokol/ontology#Peranan"/>
      </owl:disjointWith>
    </rdfs:subClassOf>
    <owl:Restriction>
      <owl:someValuesFrom
rdf:resource="http://localhost:8080/portalHumasProtokol/ontology#Infrastruktur"/>

```

```

    <owl:onProperty>
      <owl:ObjectProperty
rdf:about="http://localhost:8080/portalHumasProtokol/ontology#menggunakan_keg"/>
    </owl:onProperty>
  </owl:Restriction>
</rdfs:subClassOf>
<rdfs:label rdf:datatype="http://www.w3.org/2001/XMLSchema#string"
>Kegiatan</rdfs:label>
  <owl:disjointWith
rdf:resource="http://localhost:8080/portalHumasProtokol/ontology#HumasProtokol"/>
  <rdfs:subClassOf>
    <owl:Restriction>
      <owl:onProperty>
        <owl:ObjectProperty
rdf:about="http://localhost:8080/portalHumasProtokol/ontology#beranggotakan"/>
        </owl:onProperty>
        <owl:allValuesFrom>
          <owl:Class
rdf:about="http://localhost:8080/portalHumasProtokol/ontology#Pegawai"/>
          </owl:allValuesFrom>
        </owl:Restriction>
      </rdfs:subClassOf>
      <owl:disjointWith
rdf:resource="http://localhost:8080/portalHumasProtokol/ontology#Infrastruktur"/>
      <owl:disjointWith>
        <owl:Class
rdf:about="http://localhost:8080/portalHumasProtokol/ontology#Pegawai"/>
        </owl:disjointWith>
      </owl:Class>
      <owl:Class
rdf:about="http://localhost:8080/portalHumasProtokol/ontology#KepalaBagian">
        <owl:disjointWith
rdf:resource="http://localhost:8080/portalHumasProtokol/ontology#Pelaksana"/>
        <owl:disjointWith
rdf:resource="http://localhost:8080/portalHumasProtokol/ontology#KepalaSubBagian"/>
        <rdfs:subClassOf
rdf:resource="http://localhost:8080/portalHumasProtokol/ontology#PegawaiNegeriSipil"/>
        <rdfs:subClassOf>
          <owl:Restriction>
            <owl:allValuesFrom
rdf:resource="http://localhost:8080/portalHumasProtokol/ontology#HumasProtokol"/>
            <owl:onProperty>
              <owl:ObjectProperty
rdf:about="http://localhost:8080/portalHumasProtokol/ontology#memimpin"/>
              </owl:onProperty>

```

```

    </owl:Restriction>
  </rdfs:subClassOf>
  <rdfs:label rdf:datatype="http://www.w3.org/2001/XMLSchema#string"
  >KepalaBagian</rdfs:label>
</owl:Class>
<owl:Class rdf:about="http://localhost:8080/portalHumasProtokol/ontology#Pegawai">
  <rdfs:label rdf:datatype="http://www.w3.org/2001/XMLSchema#string"
  >Pegawai</rdfs:label>
  <rdfs:subClassOf>
    <owl:Restriction>
      <owl:allValuesFrom
rdf:resource="http://localhost:8080/portalHumasProtokol/ontology#HumasProtokol"/>
      <owl:onProperty>
        <owl:ObjectProperty
rdf:about="http://localhost:8080/portalHumasProtokol/ontology#bekerja_di_bag"/>
        </owl:onProperty>
      </owl:Restriction>
    </rdfs:subClassOf>
    <rdfs:subClassOf rdf:resource="http://www.w3.org/2002/07/owl#Thing"/>
    <rdfs:subClassOf>
      <owl:Restriction>
        <owl:someValuesFrom
rdf:resource="http://localhost:8080/portalHumasProtokol/ontology#Infrastruktur"/>
        <owl:onProperty>
          <owl:ObjectProperty
rdf:about="http://localhost:8080/portalHumasProtokol/ontology#menggunakan"/>
          </owl:onProperty>
        </owl:Restriction>
      </rdfs:subClassOf>
      <owl:disjointWith>
        <owl:Class
rdf:about="http://localhost:8080/portalHumasProtokol/ontology#Peranan"/>
        </owl:disjointWith>
        <owl:disjointWith
rdf:resource="http://localhost:8080/portalHumasProtokol/ontology#HumasProtokol"/>
        <owl:disjointWith
rdf:resource="http://localhost:8080/portalHumasProtokol/ontology#Infrastruktur"/>
        <owl:disjointWith
rdf:resource="http://localhost:8080/portalHumasProtokol/ontology#Kegiatan"/>
      </owl:Class>
      <owl:Class rdf:about="http://localhost:8080/portalHumasProtokol/ontology#Fungsi">
        <rdfs:label rdf:datatype="http://www.w3.org/2001/XMLSchema#string"
        >Fungsi</rdfs:label>
        <rdfs:subClassOf>

```

```

    <owl:Class
rdf:about="http://localhost:8080/portalHumasProtokol/ontology#Peranan"/>
    </rdfs:subClassOf>
    <owl:disjointWith
rdf:resource="http://localhost:8080/portalHumasProtokol/ontology#Tugas"/>
    </owl:Class>
    <owl:Class
rdf:about="http://localhost:8080/portalHumasProtokol/ontology#KegiatanEksternal">
    <rdfs:label rdf:datatype="http://www.w3.org/2001/XMLSchema#string"
>KegiatanEksternal</rdfs:label>
    <owl:disjointWith>
    <owl:Class
rdf:about="http://localhost:8080/portalHumasProtokol/ontology#KegiatanInternal"/>
    </owl:disjointWith>
    <rdfs:subClassOf
rdf:resource="http://localhost:8080/portalHumasProtokol/ontology#Kegiatan"/>
    </owl:Class>
    <owl:Class rdf:about="http://localhost:8080/portalHumasProtokol/ontology#Humas">
    <rdfs:label rdf:datatype="http://www.w3.org/2001/XMLSchema#string"
>Humas</rdfs:label>
    <rdfs:subClassOf
rdf:resource="http://localhost:8080/portalHumasProtokol/ontology#HumasProtokol"/>
    <rdfs:subClassOf>
    <owl:Restriction>
    <owl:onProperty>
    <owl:ObjectProperty
rdf:about="http://localhost:8080/portalHumasProtokol/ontology#dipimpin"/>
    </owl:onProperty>
    <owl:allValuesFrom
rdf:resource="http://localhost:8080/portalHumasProtokol/ontology#KepalaSubBagian"/>
    </owl:Restriction>
    </rdfs:subClassOf>
    <owl:disjointWith>
    <owl:Class
rdf:about="http://localhost:8080/portalHumasProtokol/ontology#Protokol"/>
    </owl:disjointWith>
    </owl:Class>
    <owl:Class rdf:about="http://localhost:8080/portalHumasProtokol/ontology#Peranan">
    <owl:disjointWith
rdf:resource="http://localhost:8080/portalHumasProtokol/ontology#Pegawai"/>
    <owl:disjointWith
rdf:resource="http://localhost:8080/portalHumasProtokol/ontology#Infrastruktur"/>
    <owl:disjointWith
rdf:resource="http://localhost:8080/portalHumasProtokol/ontology#Kegiatan"/>
    <owl:disjointWith
rdf:resource="http://localhost:8080/portalHumasProtokol/ontology#HumasProtokol"/>

```

```

<rdfs:label rdf:datatype="http://www.w3.org/2001/XMLSchema#string"
>Peranan</rdfs:label>
<rdfs:subClassOf>
  <owl:Restriction>
    <owl:allValuesFrom
rdf:resource="http://localhost:8080/portalHumasProtokol/ontology#HumasProtokol"/>
    <owl:onProperty>
      <owl:ObjectProperty
rdf:about="http://localhost:8080/portalHumasProtokol/ontology#dimiliki_per"/>
    </owl:onProperty>
  </owl:Restriction>
</rdfs:subClassOf>
<rdfs:subClassOf rdf:resource="http://www.w3.org/2002/07/owl#Thing"/>
</owl:Class>
<owl:Class
rdf:about="http://localhost:8080/portalHumasProtokol/ontology#KegiatanInternal">
  <owl:disjointWith
rdf:resource="http://localhost:8080/portalHumasProtokol/ontology#KegiatanEksternal"/>
  <rdfs:label rdf:datatype="http://www.w3.org/2001/XMLSchema#string"
>KegiatanInternal</rdfs:label>
  <rdfs:subClassOf
rdf:resource="http://localhost:8080/portalHumasProtokol/ontology#Kegiatan"/>
</owl:Class>
<owl:Class rdf:about="http://localhost:8080/portalHumasProtokol/ontology#Protokol">
  <rdfs:label rdf:datatype="http://www.w3.org/2001/XMLSchema#string"
>Protokol</rdfs:label>
  <owl:disjointWith
rdf:resource="http://localhost:8080/portalHumasProtokol/ontology#Humas"/>
  <rdfs:subClassOf
rdf:resource="http://localhost:8080/portalHumasProtokol/ontology#HumasProtokol"/>
  <rdfs:subClassOf>
    <owl:Restriction>
      <owl:allValuesFrom
rdf:resource="http://localhost:8080/portalHumasProtokol/ontology#KepalaSubBagian"/>
      <owl:onProperty>
        <owl:ObjectProperty
rdf:about="http://localhost:8080/portalHumasProtokol/ontology#dipimpin"/>
      </owl:onProperty>
    </owl:Restriction>
  </rdfs:subClassOf>
</owl:Class>
<owl:ObjectProperty
rdf:about="http://localhost:8080/portalHumasProtokol/ontology#digunakan_di">
  <owl:inverseOf>

```

```

    <owl:ObjectProperty
rdf:about="http://localhost:8080/portalHumasProtokol/ontology#menggunakan_keg"/>
    </owl:inverseOf>
  </owl:ObjectProperty>
  <owl:ObjectProperty
rdf:about="http://localhost:8080/portalHumasProtokol/ontology#memiliki_per">
    <owl:inverseOf>
      <owl:ObjectProperty
rdf:about="http://localhost:8080/portalHumasProtokol/ontology#dimiliki_per"/>
        </owl:inverseOf>
      </owl:ObjectProperty>
      <owl:ObjectProperty
rdf:about="http://localhost:8080/portalHumasProtokol/ontology#dimiliki_per">
        <owl:inverseOf
rdf:resource="http://localhost:8080/portalHumasProtokol/ontology#memiliki_per"/>
          </owl:ObjectProperty>
          <owl:ObjectProperty
rdf:about="http://localhost:8080/portalHumasProtokol/ontology#dipimpin_keg">
            <owl:inverseOf>
              <owl:ObjectProperty
rdf:about="http://localhost:8080/portalHumasProtokol/ontology#memimpin_keg"/>
                </owl:inverseOf>
              </owl:ObjectProperty>
              <owl:ObjectProperty
rdf:about="http://localhost:8080/portalHumasProtokol/ontology#memimpin_keg">
                <owl:inverseOf
rdf:resource="http://localhost:8080/portalHumasProtokol/ontology#dipimpin_keg"/>
                  </owl:ObjectProperty>
                  <owl:ObjectProperty
rdf:about="http://localhost:8080/portalHumasProtokol/ontology#menggunakan_keg">
                    <owl:inverseOf
rdf:resource="http://localhost:8080/portalHumasProtokol/ontology#digunakan_di"/>
                      </owl:ObjectProperty>
                      <owl:ObjectProperty
rdf:about="http://localhost:8080/portalHumasProtokol/ontology#mempekerjakan">
                        <owl:inverseOf>
                          <owl:ObjectProperty
rdf:about="http://localhost:8080/portalHumasProtokol/ontology#bekerja_di_bag"/>
                            </owl:inverseOf>
                          </owl:ObjectProperty>
                          <owl:ObjectProperty
rdf:about="http://localhost:8080/portalHumasProtokol/ontology#memiliki">
                            <owl:inverseOf>
                              <owl:ObjectProperty
rdf:about="http://localhost:8080/portalHumasProtokol/ontology#dimiliki_oleh"/>
                                </owl:inverseOf>
                              </owl:ObjectProperty>
                              <owl:inverseOf>
                                </owl:inverseOf>
                              </owl:ObjectProperty>
                            </owl:inverseOf>
                          </owl:ObjectProperty>
                        </owl:inverseOf>
                      </owl:ObjectProperty>
                    </owl:inverseOf>
                  </owl:ObjectProperty>
                </owl:inverseOf>
              </owl:ObjectProperty>
            </owl:inverseOf>
          </owl:ObjectProperty>
        </owl:inverseOf>
      </owl:ObjectProperty>
    </owl:inverseOf>
  </owl:ObjectProperty>
  <owl:ObjectProperty
rdf:about="http://localhost:8080/portalHumasProtokol/ontology#memiliki">
    <owl:inverseOf>
      <owl:ObjectProperty
rdf:about="http://localhost:8080/portalHumasProtokol/ontology#dimiliki_oleh"/>
        </owl:inverseOf>
      </owl:ObjectProperty>
    </owl:inverseOf>
  </owl:ObjectProperty>
  <owl:inverseOf>
    </owl:inverseOf>
  </owl:ObjectProperty>

```

```

</owl:ObjectProperty>
<owl:ObjectProperty
rdf:about="http://localhost:8080/portalHumasProtokol/ontology#beranggotakan">
  <owl:inverseOf>
    <owl:ObjectProperty
rdf:about="http://localhost:8080/portalHumasProtokol/ontology#anggota_keg"/>
    </owl:inverseOf>
  </owl:ObjectProperty>
  <owl:ObjectProperty
rdf:about="http://localhost:8080/portalHumasProtokol/ontology#dimiliki_oleh">
    <owl:inverseOf
rdf:resource="http://localhost:8080/portalHumasProtokol/ontology#memiliki"/>
    </owl:ObjectProperty>
  <owl:ObjectProperty
rdf:about="http://localhost:8080/portalHumasProtokol/ontology#anggota_keg">
    <owl:inverseOf
rdf:resource="http://localhost:8080/portalHumasProtokol/ontology#beranggotakan"/>
    </owl:ObjectProperty>
  <owl:ObjectProperty
rdf:about="http://localhost:8080/portalHumasProtokol/ontology#digunakan_oleh">
    <owl:inverseOf>
      <owl:ObjectProperty
rdf:about="http://localhost:8080/portalHumasProtokol/ontology#menggunakan"/>
      </owl:inverseOf>
    </owl:ObjectProperty>
  <owl:ObjectProperty
rdf:about="http://localhost:8080/portalHumasProtokol/ontology#dipimpin">
    <owl:inverseOf>
      <owl:ObjectProperty
rdf:about="http://localhost:8080/portalHumasProtokol/ontology#memimpin"/>
      </owl:inverseOf>
    </owl:ObjectProperty>
  <owl:ObjectProperty
rdf:about="http://localhost:8080/portalHumasProtokol/ontology#menggunakan">
    <owl:inverseOf
rdf:resource="http://localhost:8080/portalHumasProtokol/ontology#digunakan_oleh"/>
    </owl:ObjectProperty>
  <owl:ObjectProperty
rdf:about="http://localhost:8080/portalHumasProtokol/ontology#memimpin">
    <owl:inverseOf
rdf:resource="http://localhost:8080/portalHumasProtokol/ontology#dipimpin"/>
    </owl:ObjectProperty>
  <owl:ObjectProperty
rdf:about="http://localhost:8080/portalHumasProtokol/ontology#bekerja_di_bag">
    <owl:inverseOf
rdf:resource="http://localhost:8080/portalHumasProtokol/ontology#mempekerjakan"/>
    </owl:ObjectProperty>

```



```

<owl:DatatypeProperty
rdf:about="http://localhost:8080/portalHumasProtokol/ontology#jenis_kelamin">
  <rdfs:domain
rdf:resource="http://localhost:8080/portalHumasProtokol/ontology#Pegawai"/>
  <rdfs:range>
    <owl:DataRange>
      <owl:oneOf rdf:parseType="Resource">
        <rdf:first rdf:datatype="http://www.w3.org/2001/XMLSchema#string"
>L</rdf:first>
        <rdf:rest rdf:parseType="Resource">
          <rdf:first rdf:datatype="http://www.w3.org/2001/XMLSchema#string"
>P</rdf:first>
          <rdf:rest rdf:resource="http://www.w3.org/1999/02/22-rdf-syntax-ns#nil"/>
        </rdf:rest>
      </owl:oneOf>
    </owl:DataRange>
  </rdfs:range>
</owl:DatatypeProperty>

<owl:DatatypeProperty
rdf:about="http://localhost:8080/portalHumasProtokol/ontology#namaBagian">
  <rdfs:range rdf:resource="http://www.w3.org/2001/XMLSchema#string"/>
  <rdfs:domain
rdf:resource="http://localhost:8080/portalHumasProtokol/ontology#HumasProtokol"/>
</owl:DatatypeProperty>

<owl:DatatypeProperty
rdf:about="http://localhost:8080/portalHumasProtokol/ontology#jenis_kegiatan">
  <rdfs:domain
rdf:resource="http://localhost:8080/portalHumasProtokol/ontology#Kegiatan"/>
  <rdfs:range>
    <owl:DataRange>
      <owl:oneOf rdf:parseType="Resource">
        <rdf:first rdf:datatype="http://www.w3.org/2001/XMLSchema#string"
>harian</rdf:first>
        <rdf:rest rdf:parseType="Resource">
          <rdf:rest rdf:parseType="Resource">
            <rdf:rest rdf:resource="http://www.w3.org/1999/02/22-rdf-syntax-
ns#nil"/>
            <rdf:first rdf:datatype="http://www.w3.org/2001/XMLSchema#string"
>bulanan</rdf:first>
          </rdf:rest>
          <rdf:first rdf:datatype="http://www.w3.org/2001/XMLSchema#string"
>mingguan</rdf:first>
        </rdf:rest>
      </owl:oneOf>
    </owl:DataRange>
  </rdfs:range>
</owl:DatatypeProperty>

```

```

    </owl:oneOf>
    </owl:DataRange>
  </rdfs:range>
</owl:DatatypeProperty>
<owl:DatatypeProperty
rdf:about="http://localhost:8080/portalHumasProtokol/ontology#jumlah_staf">
  <rdfs:domain
rdf:resource="http://localhost:8080/portalHumasProtokol/ontology#HumasProtokol"/>
  <rdfs:range rdf:resource="http://www.w3.org/2001/XMLSchema#int"/>
</owl:DatatypeProperty>
<owl:DatatypeProperty
rdf:about="http://localhost:8080/portalHumasProtokol/ontology#tingkat_ijazah">
  <rdfs:range>
    <owl:DataRange>
      <owl:oneOf rdf:parseType="Resource">
        <rdf:first rdf:datatype="http://www.w3.org/2001/XMLSchema#string"
        >SD</rdf:first>
        <rdf:rest rdf:parseType="Resource">
          <rdf:rest rdf:parseType="Resource">
            <rdf:first rdf:datatype="http://www.w3.org/2001/XMLSchema#string"
            >SLTA</rdf:first>
            <rdf:rest rdf:parseType="Resource">
              <rdf:first rdf:datatype="http://www.w3.org/2001/XMLSchema#string"
              >S1</rdf:first>
              <rdf:rest rdf:parseType="Resource">
                <rdf:first rdf:datatype="http://www.w3.org/2001/XMLSchema#string"
                >S2</rdf:first>
                <rdf:rest rdf:parseType="Resource">
                  <rdf:first rdf:datatype="http://www.w3.org/2001/XMLSchema#string"
                  >D1</rdf:first>
                  <rdf:rest rdf:parseType="Resource">
                    <rdf:rest rdf:parseType="Resource">
                      <rdf:first
rdf:datatype="http://www.w3.org/2001/XMLSchema#string"
                      >D3</rdf:first>
                      <rdf:rest rdf:parseType="Resource">
                        <rdf:first
rdf:datatype="http://www.w3.org/2001/XMLSchema#string"
                        >S3</rdf:first>
                        <rdf:rest rdf:resource="http://www.w3.org/1999/02/22-rdf-
syntax-ns#nil"/>
                      </rdf:rest>
                    </rdf:rest>
                  </rdf:rest>
                </rdf:rest>
              </rdf:rest>
            </rdf:rest>
          </rdf:rest>
        </rdf:rest>
      </owl:oneOf>
    </owl:DataRange>
  </rdfs:range>
</owl:DatatypeProperty>

```

```

        <rdf:first
rdf:datatype="http://www.w3.org/2001/XMLSchema#string"
        >D2</rdf:first>
    </rdf:rest>
</rdf:rest>
</rdf:rest>
</rdf:rest>
</owl:oneOf>
</owl:DataRange>
</rdfs:range>
<rdfs:domain
rdf:resource="http://localhost:8080/portalHumasProtokol/ontology#Pegawai"/>
</owl:DatatypeProperty>
<owl:DatatypeProperty
rdf:about="http://localhost:8080/portalHumasProtokol/ontology#golongan">
    <rdfs:range rdf:resource="http://www.w3.org/2001/XMLSchema#string"/>
    <rdfs:domain
rdf:resource="http://localhost:8080/portalHumasProtokol/ontology#PegawaiNegeriSipil"/>
    </owl:DatatypeProperty>
<owl:DatatypeProperty
rdf:about="http://localhost:8080/portalHumasProtokol/ontology#deskripsi">
    <rdfs:domain
rdf:resource="http://localhost:8080/portalHumasProtokol/ontology#Kegiatan"/>
    <rdfs:range rdf:resource="http://www.w3.org/2001/XMLSchema#string"/>
    </owl:DatatypeProperty>
<owl:DatatypeProperty
rdf:about="http://localhost:8080/portalHumasProtokol/ontology#tipe"/>
<owl:DatatypeProperty
rdf:about="http://localhost:8080/portalHumasProtokol/ontology#tahun_lulus">
    <rdfs:range rdf:resource="http://www.w3.org/2001/XMLSchema#int"/>
    <rdfs:domain
rdf:resource="http://localhost:8080/portalHumasProtokol/ontology#Pegawai"/>
    </owl:DatatypeProperty>
<owl:DatatypeProperty
rdf:about="http://localhost:8080/portalHumasProtokol/ontology#tempat">
    <rdfs:domain
rdf:resource="http://localhost:8080/portalHumasProtokol/ontology#Kegiatan"/>
    <rdfs:range rdf:resource="http://www.w3.org/2001/XMLSchema#string"/>
    </owl:DatatypeProperty>
<owl:DatatypeProperty
rdf:about="http://localhost:8080/portalHumasProtokol/ontology#almamater">

```

```

    <rdfs:range rdf:resource="http://www.w3.org/2001/XMLSchema#string"/>
    <rdfs:domain
rdf:resource="http://localhost:8080/portalHumasProtokol/ontology#Pegawai"/>
  </owl:DatatypeProperty>
  <owl:DatatypeProperty
rdf:about="http://localhost:8080/portalHumasProtokol/ontology#nama_barang">
    <rdfs:range rdf:resource="http://www.w3.org/2001/XMLSchema#string"/>
    <rdfs:domain
rdf:resource="http://localhost:8080/portalHumasProtokol/ontology#Infrastruktur"/>
  </owl:DatatypeProperty>
  <owl:DatatypeProperty
rdf:about="http://localhost:8080/portalHumasProtokol/ontology#nama">
    <rdfs:domain
rdf:resource="http://localhost:8080/portalHumasProtokol/ontology#Pegawai"/>
    <rdfs:range rdf:resource="http://www.w3.org/2001/XMLSchema#string"/>
  </owl:DatatypeProperty>
  <owl:DatatypeProperty
rdf:about="http://localhost:8080/portalHumasProtokol/ontology#nip">
    <rdfs:domain
rdf:resource="http://localhost:8080/portalHumasProtokol/ontology#Pegawai"/>
    <rdfs:range rdf:resource="http://www.w3.org/2001/XMLSchema#string"/>
  </owl:DatatypeProperty>
  <owl:DatatypeProperty
rdf:about="http://localhost:8080/portalHumasProtokol/ontology#agama">
    <rdfs:domain
rdf:resource="http://localhost:8080/portalHumasProtokol/ontology#Pegawai"/>
  </owl:DatatypeProperty>
  <owl:DatatypeProperty
rdf:about="http://localhost:8080/portalHumasProtokol/ontology#catatan_mutasi">
    <rdfs:domain
rdf:resource="http://localhost:8080/portalHumasProtokol/ontology#Pegawai"/>
    <rdfs:range rdf:resource="http://www.w3.org/2001/XMLSchema#string"/>
  </owl:DatatypeProperty>
  <owl:DatatypeProperty
rdf:about="http://localhost:8080/portalHumasProtokol/ontology#deskripsi_per">
    <rdfs:domain
rdf:resource="http://localhost:8080/portalHumasProtokol/ontology#Peranan"/>
    <rdfs:range rdf:resource="http://www.w3.org/2001/XMLSchema#string"/>
  </owl:DatatypeProperty>
  <owl:DatatypeProperty
rdf:about="http://localhost:8080/portalHumasProtokol/ontology#tanggal_lahir">
    <rdfs:domain
rdf:resource="http://localhost:8080/portalHumasProtokol/ontology#Pegawai"/>
    <rdfs:range rdf:resource="http://www.w3.org/2001/XMLSchema#date"/>
  </owl:DatatypeProperty>
  <owl:DatatypeProperty
rdf:about="http://localhost:8080/portalHumasProtokol/ontology#jumlah">

```

```

    <rdfs:domain
rdf:resource="http://localhost:8080/portalHumasProtokol/ontology#Infrastruktur"/>
    <rdfs:range rdf:resource="http://www.w3.org/2001/XMLSchema#int"/>
  </owl:DatatypeProperty>
  <owl:DatatypeProperty
rdf:about="http://localhost:8080/portalHumasProtokol/ontology#tempat_lahir">
    <rdfs:range rdf:resource="http://www.w3.org/2001/XMLSchema#string"/>
    <rdfs:domain
rdf:resource="http://localhost:8080/portalHumasProtokol/ontology#Pegawai"/>
  </owl:DatatypeProperty>
  <owl:DatatypeProperty
rdf:about="http://localhost:8080/portalHumasProtokol/ontology#jabatan">
    <rdfs:range rdf:resource="http://www.w3.org/2001/XMLSchema#string"/>
    <rdfs:domain
rdf:resource="http://localhost:8080/portalHumasProtokol/ontology#PegawaiNegeriSipil"/>
  </owl:DatatypeProperty>

  <owl:ObjectProperty
rdf:about="http://localhost:8080/portalHumasProtokol/ontology#link">
    <rdf:type rdf:resource="http://www.w3.org/1999/02/22-rdf-syntax-ns#Property"/>
    <rdfs:label rdf:datatype="http://www.w3.org/2001/XMLSchema#string"
    >abstract link</rdfs:label>
  </owl:ObjectProperty>

  <owl:ObjectProperty
rdf:about="http://localhost:8080/portalHumasProtokol/ontology#memiliki">
    <rdfs:subPropertyOf
rdf:resource="http://localhost:8080/portalHumasProtokol/ontology#link"/>
    <rdf:type rdf:resource="http://www.w3.org/1999/02/22-rdf-syntax-ns#Property"/>
    <owl:inverseOf>
      <owl:ObjectProperty
rdf:about="http://localhost:8080/portalHumasProtokol/ontology#dimiliki_oleh"/>
    </owl:inverseOf>
    <rdfs:label rdf:datatype="http://www.w3.org/2001/XMLSchema#string"
    >bagian_memiliki_kegiatan</rdfs:label>
  </owl:ObjectProperty>

  <owl:ObjectProperty
rdf:about="http://localhost:8080/portalHumasProtokol/ontology#dimiliki_oleh">
    <rdfs:subPropertyOf
rdf:resource="http://localhost:8080/portalHumasProtokol/ontology#link"/>
    <rdf:type rdf:resource="http://www.w3.org/1999/02/22-rdf-syntax-ns#Property"/>
    <owl:inverseOf>
      <owl:ObjectProperty
rdf:about="http://localhost:8080/portalHumasProtokol/ontology#memiliki"/>

```

```

</owl:inverseOf>
<rdfs:label rdf:datatype="http://www.w3.org/2001/XMLSchema#string"
  >kegiatan_dimiliki_bagian</rdfs:label>
</owl:ObjectProperty>

<owl:ObjectProperty
  rdf:about="http://localhost:8080/portalHumasProtokol/ontology#bekerja_di_bag">
<rdfs:subPropertyOf
  rdf:resource="http://localhost:8080/portalHumasProtokol/ontology#link"/>
<rdf:type rdf:resource="http://www.w3.org/1999/02/22-rdf-syntax-ns#Property"/>
<owl:inverseOf>
  <owl:ObjectProperty
    rdf:about="http://localhost:8080/portalHumasProtokol/ontology#mempekerjakan"/>
</owl:inverseOf>
<rdfs:label rdf:datatype="http://www.w3.org/2001/XMLSchema#string"
  >bekerja_di_bagian</rdfs:label>
</owl:ObjectProperty>

<owl:ObjectProperty
  rdf:about="http://localhost:8080/portalHumasProtokol/ontology#mempekerjakan">
<rdfs:subPropertyOf
  rdf:resource="http://localhost:8080/portalHumasProtokol/ontology#link"/>
<rdf:type rdf:resource="http://www.w3.org/1999/02/22-rdf-syntax-ns#Property"/>
<owl:inverseOf>
  <owl:ObjectProperty
    rdf:about="http://localhost:8080/portalHumasProtokol/ontology#bekerja_di_bag"/>
</owl:inverseOf>
<rdfs:label rdf:datatype="http://www.w3.org/2001/XMLSchema#string"
  >mempekerjakan_pegawai</rdfs:label>
</owl:ObjectProperty>

<owl:ObjectProperty
  rdf:about="http://localhost:8080/portalHumasProtokol/ontology#anggota_keg">
<rdfs:subPropertyOf
  rdf:resource="http://localhost:8080/portalHumasProtokol/ontology#link"/>
<rdf:type rdf:resource="http://www.w3.org/1999/02/22-rdf-syntax-ns#Property"/>
<owl:inverseOf>
  <owl:ObjectProperty
    rdf:about="http://localhost:8080/portalHumasProtokol/ontology#beranggotakan"/>
</owl:inverseOf>
<rdfs:label rdf:datatype="http://www.w3.org/2001/XMLSchema#string"
  >anggota_dari_kegiatan</rdfs:label>
</owl:ObjectProperty>

```

```

<owl:ObjectProperty
rdf:about="http://localhost:8080/portalHumasProtokol/ontology#beranggotakan">
<rdfs:subPropertyOf
rdf:resource="http://localhost:8080/portalHumasProtokol/ontology#link"/>
<rdf:type rdf:resource="http://www.w3.org/1999/02/22-rdf-syntax-ns#Property"/>
<owl:inverseOf>
  <owl:ObjectProperty
rdf:about="http://localhost:8080/portalHumasProtokol/ontology#anggota_keg"/>
</owl:inverseOf>
<rdfs:label rdf:datatype="http://www.w3.org/2001/XMLSchema#string"
  >kegiatan_beranggotakan</rdfs:label>
</owl:ObjectProperty>

<owl:ObjectProperty
rdf:about="http://localhost:8080/portalHumasProtokol/ontology#memimpin_keg">
<rdfs:subPropertyOf
rdf:resource="http://localhost:8080/portalHumasProtokol/ontology#link"/>
<rdf:type rdf:resource="http://www.w3.org/1999/02/22-rdf-syntax-ns#Property"/>
<owl:inverseOf>
  <owl:ObjectProperty
rdf:about="http://localhost:8080/portalHumasProtokol/ontology#dipimpin_keg"/>
</owl:inverseOf>
<rdfs:label rdf:datatype="http://www.w3.org/2001/XMLSchema#string"
  >memimpin_kegiatan</rdfs:label>
</owl:ObjectProperty>

<owl:ObjectProperty
rdf:about="http://localhost:8080/portalHumasProtokol/ontology#dipimpin_keg">
<rdfs:subPropertyOf
rdf:resource="http://localhost:8080/portalHumasProtokol/ontology#link"/>
<rdf:type rdf:resource="http://www.w3.org/1999/02/22-rdf-syntax-ns#Property"/>
<owl:inverseOf>
  <owl:ObjectProperty
rdf:about="http://localhost:8080/portalHumasProtokol/ontology#memimpin_keg"/>
</owl:inverseOf>
<rdfs:label rdf:datatype="http://www.w3.org/2001/XMLSchema#string"
  >kegiatan_dipimpin_oleh</rdfs:label>
</owl:ObjectProperty>

<owl:ObjectProperty
rdf:about="http://localhost:8080/portalHumasProtokol/ontology#digunakan_di">
<rdfs:subPropertyOf
rdf:resource="http://localhost:8080/portalHumasProtokol/ontology#link"/>
<rdf:type rdf:resource="http://www.w3.org/1999/02/22-rdf-syntax-ns#Property"/>
<owl:inverseOf>

```

```

    <owl:ObjectProperty
rdf:about="http://localhost:8080/portalHumasProtokol/ontology#menggunakan_keg"/>
</owl:inverseOf>
<rdfs:label rdf:datatype="http://www.w3.org/2001/XMLSchema#string"
    >infrastruktur_digunakan_kegiatan</rdfs:label>
</owl:ObjectProperty>

<owl:ObjectProperty
rdf:about="http://localhost:8080/portalHumasProtokol/ontology#menggunakan_keg">
<rdfs:subPropertyOf
rdf:resource="http://localhost:8080/portalHumasProtokol/ontology#link"/>
<rdf:type rdf:resource="http://www.w3.org/1999/02/22-rdf-syntax-ns#Property"/>
<owl:inverseOf>
    <owl:ObjectProperty
rdf:about="http://localhost:8080/portalHumasProtokol/ontology#digunakan_di"/>
</owl:inverseOf>
<rdfs:label rdf:datatype="http://www.w3.org/2001/XMLSchema#string"
    >kegiatan_menggunakan_infrastruktur</rdfs:label>
</owl:ObjectProperty>

<owl:ObjectProperty
rdf:about="http://localhost:8080/portalHumasProtokol/ontology#menggunakan">
<rdfs:subPropertyOf
rdf:resource="http://localhost:8080/portalHumasProtokol/ontology#link"/>
<rdf:type rdf:resource="http://www.w3.org/1999/02/22-rdf-syntax-ns#Property"/>
<owl:inverseOf>
    <owl:ObjectProperty
rdf:about="http://localhost:8080/portalHumasProtokol/ontology#digunakan_oleh"/>
</owl:inverseOf>
<rdfs:label rdf:datatype="http://www.w3.org/2001/XMLSchema#string"
    >penanggung_jawab_infrastruktur</rdfs:label>
</owl:ObjectProperty>

<owl:ObjectProperty
rdf:about="http://localhost:8080/portalHumasProtokol/ontology#digunakan_oleh">
<rdfs:subPropertyOf
rdf:resource="http://localhost:8080/portalHumasProtokol/ontology#link"/>
<rdf:type rdf:resource="http://www.w3.org/1999/02/22-rdf-syntax-ns#Property"/>
<owl:inverseOf>
    <owl:ObjectProperty
rdf:about="http://localhost:8080/portalHumasProtokol/ontology#menggunakan"/>
</owl:inverseOf>
<rdfs:label rdf:datatype="http://www.w3.org/2001/XMLSchema#string"
    >infrastruktur_digunakan_pegawai</rdfs:label>

```



```

</owl:ObjectProperty>

<owl:ObjectProperty
rdf:about="http://localhost:8080/portalHumasProtokol/ontology#memimpin">
<rdfs:subPropertyOf
rdf:resource="http://localhost:8080/portalHumasProtokol/ontology#link"/>
<rdf:type rdf:resource="http://www.w3.org/1999/02/22-rdf-syntax-ns#Property"/>
<owl:inverseOf>
  <owl:ObjectProperty
rdf:about="http://localhost:8080/portalHumasProtokol/ontology#dipimpin"/>
</owl:inverseOf>
<rdfs:label rdf:datatype="http://www.w3.org/2001/XMLSchema#string"
  >pimpinan_bagian</rdfs:label>
</owl:ObjectProperty>

<owl:ObjectProperty
rdf:about="http://localhost:8080/portalHumasProtokol/ontology#dipimpin">
<rdfs:subPropertyOf
rdf:resource="http://localhost:8080/portalHumasProtokol/ontology#link"/>
<rdf:type rdf:resource="http://www.w3.org/1999/02/22-rdf-syntax-ns#Property"/>
<owl:inverseOf>
  <owl:ObjectProperty
rdf:about="http://localhost:8080/portalHumasProtokol/ontology#memimpin"/>
</owl:inverseOf>
<rdfs:label rdf:datatype="http://www.w3.org/2001/XMLSchema#string"
  >bagian_dipimpin_oleh</rdfs:label>
</owl:ObjectProperty>
</rdf:RDF>

<!-- Created with Protege (with OWL Plugin 3.3.1, Build 430)
http://protege.stanford.edu -->

```



LAMPIRAN C : INSTANCES DATA**HumasProtokol.csv**

```
id,tipe,namaBagian,kepala
HUP,HumasProtokol,Humas Protokol,Eko_Herwiyanto_AP
HUM,Humas,Humas,fahmi
PRO,Protokol,Protokol,Dani_Hamdani_S_STP
```

Pegawai.csv

```
id,nip,tipe,nama,golongan,almamater,tahun_lulus,tingkat_ijazah,tempat_lahir,tanggal_la
hir,agama,catatan_mutasi,jenis_kelamin,afiliasi
Eko_Herwiyanto_AP,010 249 559,KepalaBagian,Eko_Herwiyanto
AP,III/d,STIAMI,2006,S2,Boyolali,11/08/1972,Islam,Sekcam,L,HUP
fahmi,480 126 069,KepalaSubBagian,Muhammad Fahmi ST. M.Si,III/c,STIAMI,2005,S2,Ujung
Pandang,02/02/1974,Islam,Bag. Infokom,L,HUM
Dani_Hamdani_S_STP,010 264 839,KepalaSubBagian,Dani_Hamdani
S.STP,III/b,STPDN,2003,S1,Garut,05/02/1980,Islam,Dinas Tata Kota,L,PRO
rusmini,010 175 817,Pelaksana,Rusmini,III/b,SMA,1982,SLTA,Gombong,22/08/1961,Islam,D D
N,P,HUM
minar,400 033 131,Pelaksana,Minar
Rosdiana,III/b,SMA,1983,SLTA,Balige,15/11/1962,Protestan,Kab. Simalungun,P,HUM
hartikah,480 123 288,Pelaksana,Dra.
Hartikah,III/b,UNPAD,1992,S1,Bogor,15/04/1965,Islam,Bag. Keuangan,P,HUM
ahmad,010 267 122,Pelaksana,Ahmad S.STP,III/a,STPDN,2005,S1,Teluk
Betung,27/04/1981,Islam,Bag. Umum,L,PRO
fathir,010 268 932,Pelaksana,Fathir Fajar Sidiq
S.STP,III/a,STPDN,2006,S1,Bogor,22/06/1984,Islam,Bag. Umum,L,PRO
tranto,480 148 203,Pelaksana,R. Tranto Dwi Hardjono
SH,III/a,UNTAG,1996,S1,Purwodadi,31/05/1969,Islam,Bag. Umum,L,PRO
nasrullah,480 133
066,Pelaksana,Nasrullah,II/c,BSI,2001,D3,Jakarta,03/07/1978,Islam,Kec. Sukmajaya,L,HUM
shillawati,480 145
936,Pelaksana,Shillawati,II/c,UI,2003,D3,Jakarta,30/03/1982,Islam,,P,HUM
erwin,480 119 637,Pelaksana,Erwin Narto,II/b,UI,2008,S1,Depok,22/05/1979,Islam,Bag.
Umum,L,PRO
retno,480 123 296,Pelaksana,Retno
Sustyaningsih,II/b,SMA,1992,SLTA,Jakarta,01/02/1974,Islam,Bag. Umum,P,PRO
djoko,160 033 051,Pelaksana,Djoko
Wahyudi,II/a,SD,1972,SD,Jatisari,10/03/1958,Islam,Depnaker,L,HUM
riswati,010 163 253,Pelaksana,Riswati,II/a,SD,1971,SD,Purwokerto,09/05/1958,Islam,D D
N,P,HUM
erwan,480 126 143,Pelaksana,Erwan
Mindaya,II/a,SMA,1985,SLTA,Bogor,04/08/1965,Islam,,L,HUM
ade,480 148 227,Pelaksana,Ade Hukmawan,II/a,STM,1997,SLTA,Subang,09/04/1981,Islam,Bag.
Umum,L,PRO
kodir,480 174 487,Pelaksana,Abdul Kodir,II/a,SMA,1997,SLTA,Bogor,25/07/1978,Islam,Kec.
Sawangan,L,HUM
```

```

alfia,480 999 001,NonPegawaiNegeriSipil,Alfia
Budiwati,,SMA,2005,SLTA,Depok,29/02/1988,Islam,,P,PRO

rusdianto,480 999
002,NonPegawaiNegeriSipil,Rusdianto,,SMA,2005,SLTA,Jakarta,31/08/1986,Islam,,L,HUM

Andri_Setiawan,480 999 003,NonPegawaiNegeriSipil,Andri
Setiawan,,SMA,2005,SLTA,Surabaya,06/05/1987,Islam,,L,HUM

Fajar_Adi_Putra,480 999 004,NonPegawaiNegeriSipil,Fajar Adi
Putra,,SMA,2005,SLTA,Jakarta,04/03/1986,Islam,,L,PRO

wewen,480 999 005,NonPegawaiNegeriSipil,Wewen
Sajali,,SMA,2005,SLTA,Bandung,30/04/1986,Islam,,L,PRO

```

Infrastruktur.csv

```

id,nama_barang,jumlah,pegawai,kegiatan1,kegiatan2,kegiatan3,kegiatan4,kegiatan5,kegiatan6
handycam,Handycam,4,kodir,peliputan,keprotokolan,,,,
kamera,Kamera Foto,4,kodir,peliputan,keprotokolan,,,,
komputer,Komputer,14,,peliputan,pembuatan kliping,pembuatan advertorial,pelayanan pengaduan,pembuatan_buku,pengelolaan_internet
mobil_1,Mobil 1,1,Eko_Herwiyanto_AP,,,,,
mobil_2,Mobil 2,1,djoko,peliputan,talk_show,,,,
motor_1,Motor 1,1,nasrullah,,,,,
motor_2,Motor 2,1,kodir,,,,,
motor_3,Motor 3,1,wewen,,,,,
motor_4,Motor 4,1,rusdianto,,,,,
motor_5,Motor 5,1,djoko,,,,,

```

Peranan.csv

```

id,tipe,deskripsi,afiliasil,afiliasi2
TU1,Tugas,Melaksanakan sebagian tugas bagian Hubungan Masyarakat dan Protokol bidang kehumasan pemerintahan,HUM,
TU2,Tugas,Melaksanakan sebagian tugas bagian Hubungan Masyarakat dan Protokol bidang keprotokolan,PRO,
FH1,Fungsi,Penyusunan rencana kerja Sub Bagian Hubungan Masyarakat mengacu pada rencana kerja Bagian Hubungan Masyarakat dan Protokol,PRO,
FH2,Fungsi,Pengelolaan data kehumasan sebagai bahan penyusunan kebijakan kehumasan pemerintah kota,HUM,
FH3,Fungsi,Penyiapan bahan petunjuk teknis dalam pengumpulan sumber informasi,HUM,
FH4,Fungsi,Pengkoordinasian dalam pengendalian informasi,HUM,
FH5,Fungsi,Pengumpulan informasi kegiatan pemerintahan dan penyusunan rilis berita,HUM,
FH6,Fungsi,Pengkoordinasian dan hubungan kerja dengan media massa kegiatan pemerintah kota,HUM,

```

FH7, Fungsi, Pengkoordinasian dan pelaksanaan penyusunan laporan dan evaluasi kegiatan penyelenggaraan Sub Bagian Hubungan Masyarakat, HUM,

FH8, Fungsi, Pelaksanaan tugas kedinasan lainnya yang diberikan oleh Kepala Bagian sesuai dengan bidang tugasnya, HUM, PRO

FP1, Fungsi, Penyusunan rencana kerja Sub Bagian Protokol mengacu pada rencana strategi Setda, PRO,

FP2, Fungsi, Pengkoordinasian pelaksanaan penyiapan acara penyelenggaraan upacara rapat dinas penerimaan tamu dan kegiatan resmi lainnya, PRO,

FP3, Fungsi, Penyiapan bahan koordinasi penerimaan tamu-tamu Pemerintah Daerah dan cinderamata, PRO,

FP4, Fungsi, Penyiapan bahan koordinasi keprotokolan penerimaan pejabat negara, PRO,

FP5, Fungsi, Penyiapan sarana prasarana dan sumber daya korps musik Pemerintah Daerah, PRO,

FP6, Fungsi, Penyusunan agenda pemanduan kegiatan Walikota Wakil Walikota dan Sekretaris Daerah, PRO,

Kegiatan.csv

```
id,tipe,sub_bagian,deskripsi,pimpinan,anggota1,anggota2,anggota3,anggota4,anggota5,anggota6,anggota7,jenis_kegiatan,tempat,infrastruktur1,infrastruktur2,infrastruktur3,infr
astruktur4

peliputan,KegiatanEksternal,HUM,Peliputan
Kegiatan,fahmi,kodir,Andri Setiawan,djoko,nasrullah,,,,harian,tentative,handycam,kamer
a,komputer,mobil_2

talk_show,KegiatanEksternal,HUM,Talk Show
Radio,fahmi,shillawati,nasrullah,rusdianto,,,,,bulanan,stasiun radio,mobil_2,,,

penyediaan_bacaan,KegiatanInternal,HUM,Penyediaan Bahan
Bacaan,fahmi,djoko,riswati,,,,,harian,kantor humas,,,,

pembuatan_kliping,KegiatanInternal,HUM,Pembuatan Kliping
Berita,fahmi,rusmini,erwan,hartikah,Andri Setiawan,,,,harian,kantor humas,komputer,,,

pembuatan_advertorial,KegiatanInternal,HUM,Pembuatan Advertorial Pembangunan
Depok,fahmi,nasrullah,shillawati,rusdianto,,,,,mingguan,kantor humas,komputer,,,

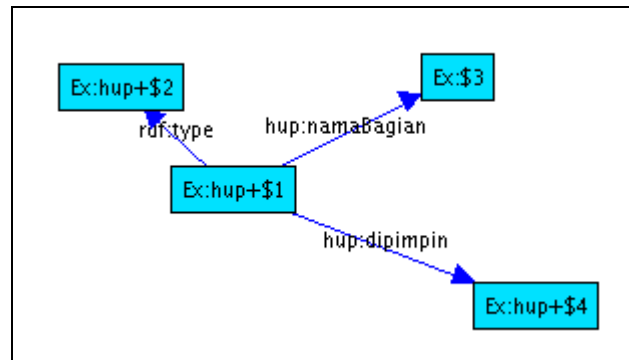
pelayanan_pengaduan,KegiatanInternal,HUM,Pelayanan
Pengaduan,fahmi,hartikah,fathir,nasrullah,rusmini,minar,,,harian,kantor
humas,komputer,,,

keprotokolan,KegiatanEksternal,PRO,Keprotokolan Pemkot
Depok,Dani Hamdani_S_STP,retno,alfia,Fajar_Adi_Putra,fathir,erwin,ade,ahmad,mingguan,k
antor walikota Depok,handycam,kamera,,

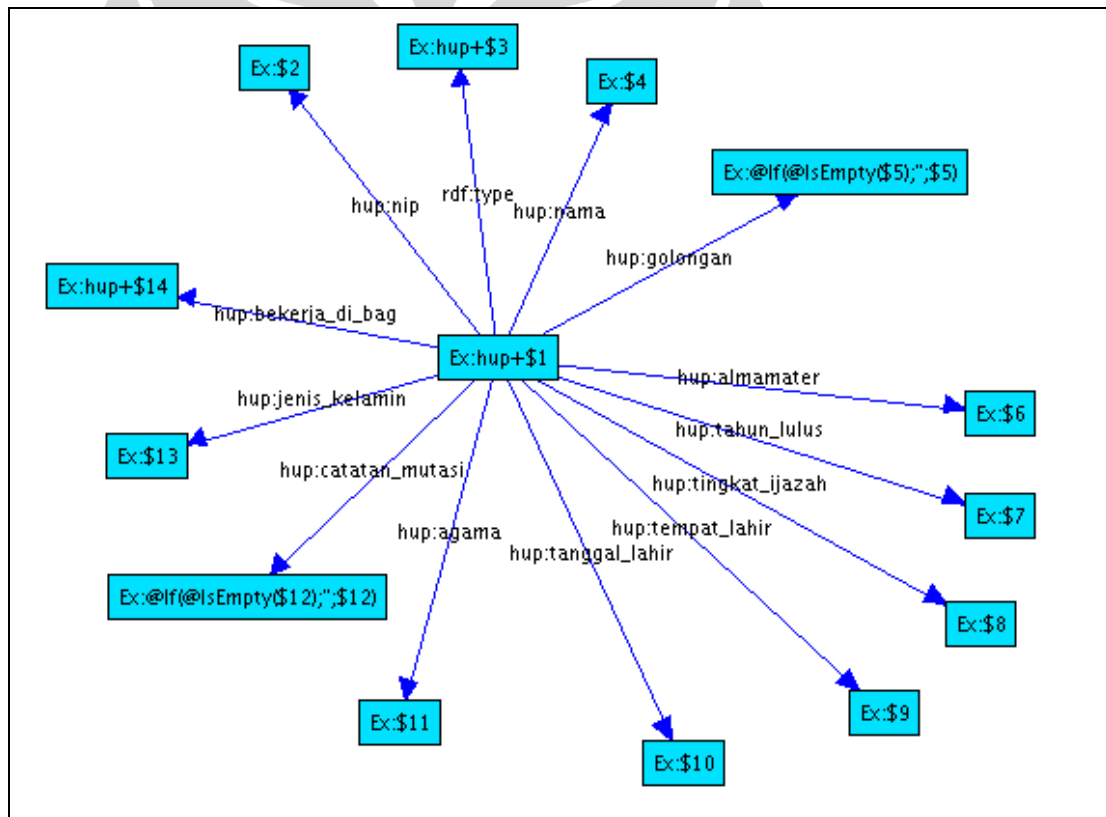
pembuatan_buku,KegiatanInternal,PRO,Pembuatan Buku Sambutan Walikota dan
Wakil,Dani Hamdani_S_STP,fathir,nasrullah,ade,retno,,,,harian,kantor
protokol,komputer,,,

pengelolaan_internet,KegiatanInternal,PRO,Pengelolaan Media
Internet,Dani Hamdani_S_STP,rusdianto,fathir,wewen,nasrullah,rusmini,,,harian,kantor
protokol,komputer,,,
```

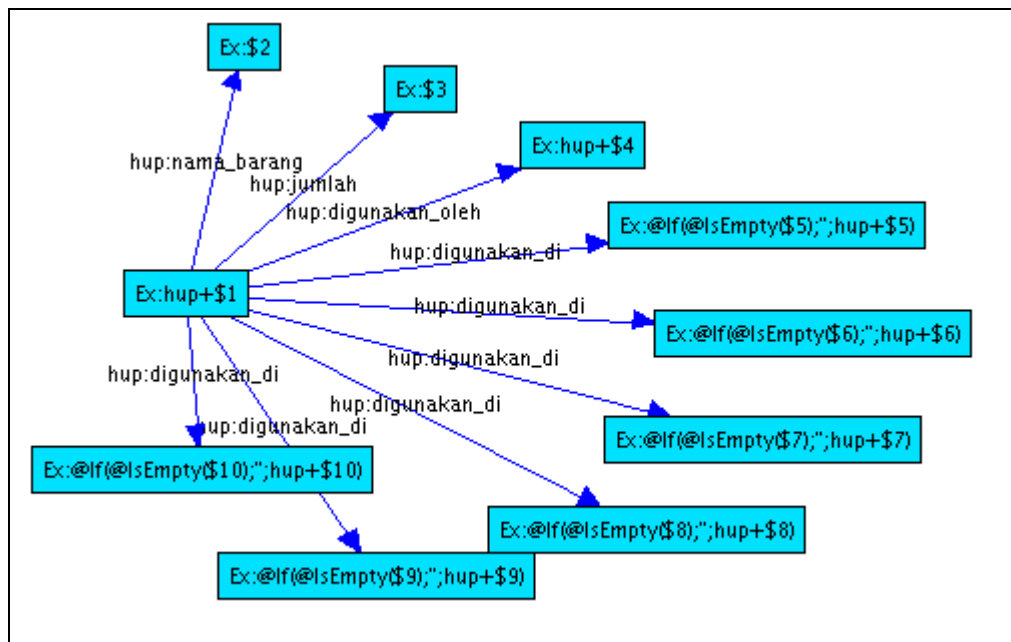
Map Graph



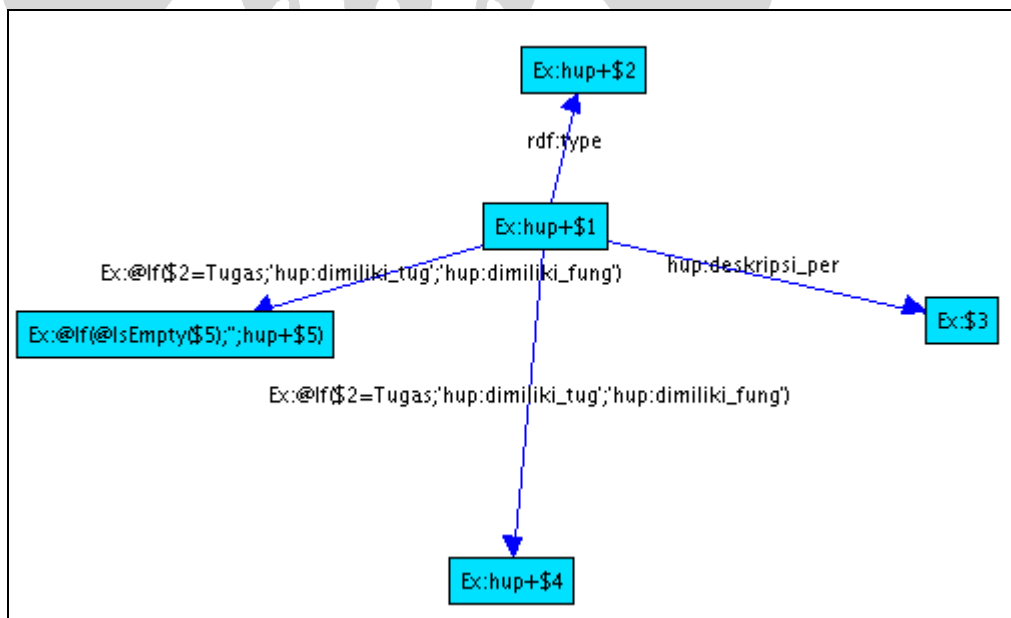
Gambar C.1 HumasProtokol.xgmml



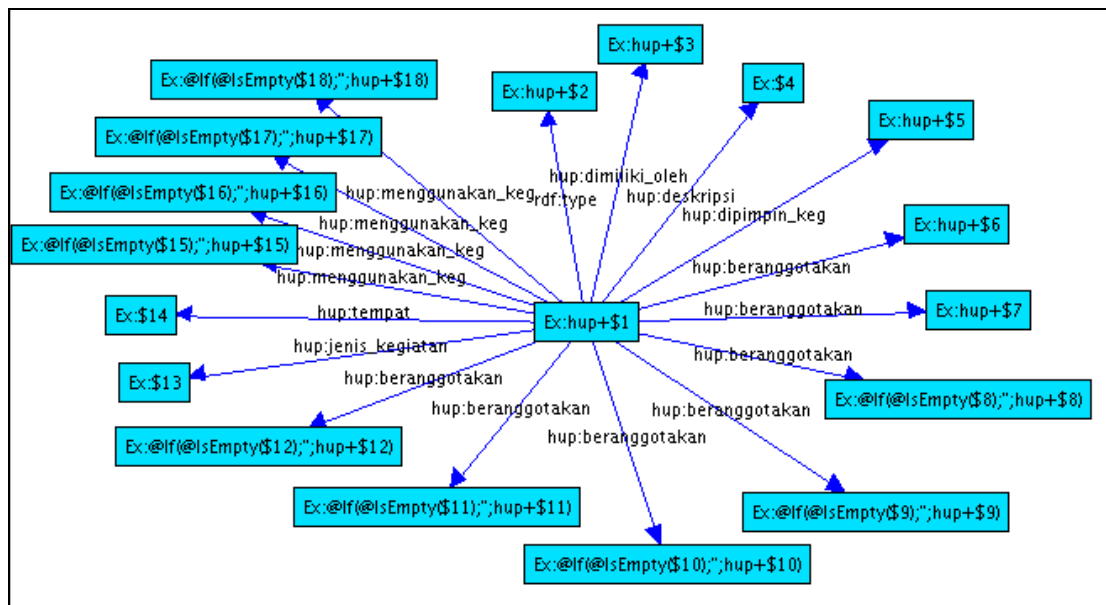
Gambar C.2 Pegawai.xgmml



Gambar C.3 Infrastruktur.xgmml



Gambar C.4 Peranan.xgmml



Gambar C.5 Kegiatan.xgml

HumasProtokol.n3

```
# Base: http://mybase
@prefix :      <#> .
@prefix hup:  <http://localhost:8080/portalHumasProtokol/ontology#> .
@prefix rdf:  <http://www.w3.org/1999/02/22-rdf-syntax-ns#> .
@prefix rdf123: <http://rdf123.umbc.edu/ns/> .

hup:HUP
  a      hup:HumasProtokol ;
  hup:dipimpin hup:Eko_Herwiyanto_AP ;
  hup:namaBagian "Humas Protokol" .

hup:HUM
  a      hup:Humas ;
  hup:dipimpin hup:fahmi ;
  hup:namaBagian "Humas" .

hup:PRO
  a      hup:Protokol ;
  hup:dipimpin hup:Dani_Hamdani_S_STP ;
  hup:namaBagian "Protokol" .
```

Pegawai.n3

```

# Base: http://mybase
@prefix :      <#> .
@prefix hup:   <http://localhost:8080/portalHumasProtokol/ontology#> .
@prefix rdf:   <http://www.w3.org/1999/02/22-rdf-syntax-ns#> .
@prefix rdf123: <http://rdf123.umbc.edu/ns/> .

hup:kodir
    a          hup:Pelaksana ;
    hup:agama "Islam" ;
    hup:almamater "SMA" ;
    hup:bekerja_di_bag hup:HUM ;
    hup:catatan_mutasi "Kec. Sawangan" ;
    hup:golongan "II/a" ;
    hup:jenis_kelamin "L" ;
    hup:nama "Abdul Kodir" ;
    hup:nip "480 174 487" ;
    hup:tahun_lulus "1997" ;
    hup:tanggal_lahir "25/07/1978" ;
    hup:tempat_lahir "Bogor" ;
    hup:tingkat_ijazah "SLTA" .

hup:fahmi
    a          hup:KepalaSubBagian ;
    hup:agama "Islam" ;
    hup:almamater "STIAMI" ;
    hup:bekerja_di_bag hup:HUM ;
    hup:catatan_mutasi "Bag. Infokom" ;
    hup:golongan "III/c" ;
    hup:jenis_kelamin "L" ;
    hup:nama "Muhammad Fahmi ST. M.Si" ;
    hup:nip "480 126 069" ;
    hup:tahun_lulus "2005" ;
    hup:tanggal_lahir "02/02/1974" ;
    hup:tempat_lahir "Ujung Pandang" ;
    hup:tingkat_ijazah "S2" .

hup:djoko
    a          hup:Pelaksana ;
    hup:agama "Islam" ;

```



```

hup:almamater "SD" ;
hup:bekerja_di_bag hup:HUM ;
hup:catatan_mutasi "Depnaker" ;
hup:golongan "II/a" ;
hup:jenis_kelamin "L" ;
hup:nama "Djoko Wahyudi" ;
hup:nip "160 033 051" ;
hup:tahun_lulus "1972" ;
hup:tanggal_lahir "10/03/1958" ;
hup:tempat_lahir "Jatisari" ;
hup:tingkat_ijazah "SD" .

```

```

hup:Andri_Setiawan

```

```

  a      hup:NonPegawaiNegeriSipil ;
hup:agama "Islam" ;
hup:almamater "SMA" ;
hup:bekerja_di_bag hup:HUM ;
hup:jenis_kelamin "L" ;
hup:nama "Andri Setiawan" ;
hup:nip "480 999 003" ;
hup:tahun_lulus "2005" ;
hup:tanggal_lahir "6/05/1987" ;
hup:tempat_lahir "Surabaya" ;
hup:tingkat_ijazah "SLTA" .

```

```

hup:tranto

```

```

  a      hup:Pelaksana ;
hup:agama "Islam" ;
hup:almamater "UNTAG" ;
hup:bekerja_di_bag hup:PRO ;
hup:catatan_mutasi "Bag. Umum" ;
hup:golongan "III/a" ;
hup:jenis_kelamin "L" ;
hup:nama "R. Tranto Dwi Hardjono SH" ;
hup:nip "480 148 203" ;
hup:tahun_lulus "1996" ;
hup:tanggal_lahir "31/05/1969" ;
hup:tempat_lahir "Purwodadi" ;
hup:tingkat_ijazah "S1" .

```

```

hup:wewen
  a      hup:NonPegawaiNegeriSipil ;
  hup:agama "Islam" ;
  hup:almamater "SMA" ;
  hup:bekerja_di_bag hup:PRO ;
  hup:jenis_kelamin "L" ;
  hup:nama "Wewen Sajali" ;
  hup:nip "480 999 005" ;
  hup:tahun_lulus "2005" ;
  hup:tanggal_lahir "30/04/1986" ;
  hup:tempat_lahir "Bandung" ;
  hup:tingkat_ijazah "SLTA" .

hup:rusdianto
  a      hup:NonPegawaiNegeriSipil ;
  hup:agama "Islam" ;
  hup:almamater "SMA" ;
  hup:bekerja_di_bag hup:HUM ;
  hup:jenis_kelamin "L" ;
  hup:nama "Rusdianto" ;
  hup:nip "480 999 002" ;
  hup:tahun_lulus "2005" ;
  hup:tanggal_lahir "31/08/1986" ;
  hup:tempat_lahir "Jakarta" ;
  hup:tingkat_ijazah "SLTA" .

hup:hartikah
  a      hup:Pelaksana ;
  hup:agama "Islam" ;
  hup:almamater "UNPAD" ;
  hup:bekerja_di_bag hup:HUM ;
  hup:catatan_mutasi "Bag. Keuangan" ;
  hup:golongan "III/b" ;
  hup:jenis_kelamin "P" ;
  hup:nama "Dra. Hartikah" ;
  hup:nip "480 123 288" ;
  hup:tahun_lulus "1992" ;
  hup:tanggal_lahir "15/04/1965" ;
  hup:tempat_lahir "Bogor" ;
  hup:tingkat_ijazah "S1" .

```

```

hup:shillawati
  a      hup:Pelaksana ;
hup:agama "Islam" ;
hup:almamater "UI" ;
hup:bekerja_di_bag hup:HUM ;
hup:golongan "II/c" ;
hup:jenis_kelamin "P" ;
hup:nama "Shillawati" ;
hup:nip "480 145 936" ;
hup:tahun_lulus "2003" ;
hup:tanggal_lahir "30/03/1982" ;
hup:tempat_lahir "Jakarta" ;
hup:tingkat_ijazah "D3" .

hup:Fajar_Adi_Putra
  a      hup:NonPegawaiNegeriSipil ;
hup:agama "Islam" ;
hup:almamater "SMA" ;
hup:bekerja_di_bag hup:PRO ;
hup:jenis_kelamin "L" ;
hup:nama "Fajar Adi Putra" ;
hup:nip "480 999 004" ;
hup:tahun_lulus "2005" ;
hup:tanggal_lahir "4/03/1986" ;
hup:tempat_lahir "Jakarta" ;
hup:tingkat_ijazah "SLTA" .

hup:Eko_Herwiyanto_AP
  a      hup:KepalaBagian ;
hup:agama "Islam" ;
hup:almamater "STIAMI" ;
hup:bekerja_di_bag hup:HUP ;
hup:catatan_mutasi "Sekcam" ;
hup:golongan "III/d" ;
hup:jenis_kelamin "L" ;
hup:nama "Eko Herwiyanto AP" ;
hup:nip "010 249 559" ;
hup:tahun_lulus "2006" ;
hup:tanggal_lahir "11/08/1972" ;

```

```

hup:tempat_lahir "Boyolali" ;
hup:tingkat_ijazah "S2" .

```

```

hup:fathir

```

```

    a      hup:Pelaksana ;
hup:agama "Islam" ;
hup:almamater "STPDN" ;
hup:bekerja_di_bag hup:PRO ;
hup:catatan_mutasi "Bag. Umum" ;
hup:golongan "III/a" ;
hup:jenis_kelamin "L" ;
hup:nama "Fathir Fajar Sidiq S.STP" ;
hup:nip "010 268 932" ;
hup:tahun_lulus "2006" ;
hup:tanggal_lahir "22/06/1984" ;
hup:tempat_lahir "Bogor" ;
hup:tingkat_ijazah "S1" .

```

```

hup:nasrullah

```

```

    a      hup:Pelaksana ;
hup:agama "Islam" ;
hup:almamater "BSI" ;
hup:bekerja_di_bag hup:HUM ;
hup:catatan_mutasi "Kec. Sukmajaya" ;
hup:golongan "II/c" ;
hup:jenis_kelamin "L" ;
hup:nama "Nasrullah" ;
hup:nip "480 133 066" ;
hup:tahun_lulus "2001" ;
hup:tanggal_lahir "03/07/1978" ;
hup:tempat_lahir "Jakarta" ;
hup:tingkat_ijazah "D3" .

```

```

hup:erwan

```

```

    a      hup:Pelaksana ;
hup:agama "Islam" ;
hup:almamater "SMA" ;
hup:bekerja_di_bag hup:HUM ;
hup:golongan "II/a" ;
hup:jenis_kelamin "L" ;

```

```

hup:nama "Erwan Mindaya" ;
hup:nip "480 126 143" ;
hup:tahun_lulus "1985" ;
hup:tanggal_lahir "04/08/1965" ;
hup:tempat_lahir "Bogor" ;
hup:tingkat_ijazah "SLTA" .

```

hup:rusmini

```

a      hup:Pelaksana ;
hup:agama "Islam" ;
hup:almamater "SMA" ;
hup:bekerja_di_bag hup:HUM ;
hup:catatan_mutasi "D D N" ;
hup:golongan "III/b" ;
hup:jenis_kelamin "P" ;
hup:nama "Rusmini" ;
hup:nip "010 175 817" ;
hup:tahun_lulus "1982" ;
hup:tanggal_lahir "22/08/1961" ;
hup:tempat_lahir "Gombang" ;
hup:tingkat_ijazah "SLTA" .

```

hup:minar

```

a      hup:Pelaksana ;
hup:agama "Protestan" ;
hup:almamater "SMA" ;
hup:bekerja_di_bag hup:HUM ;
hup:catatan_mutasi "Kab. Simalungun" ;
hup:golongan "III/b" ;
hup:jenis_kelamin "P" ;
hup:nama "Minar Rosdiana" ;
hup:nip "400 033 131" ;
hup:tahun_lulus "1983" ;
hup:tanggal_lahir "15/11/1962" ;
hup:tempat_lahir "Balige" ;
hup:tingkat_ijazah "SLTA" .

```

hup:ade

```

a      hup:Pelaksana ;
hup:agama "Islam" ;

```

```

hup:almamater "STM" ;
hup:bekerja_di_bag hup:PRO ;
hup:catatan_mutasi "Bag. Umum" ;
hup:golongan "II/a" ;
hup:jenis_kelamin "L" ;
hup:nama "Ade Hukmawan" ;
hup:nip "480 148 227" ;
hup:tahun_lulus "1997" ;
hup:tanggal_lahir "09/04/1981" ;
hup:tempat_lahir "Subang" ;
hup:tingkat_ijazah "SLTA" .

```

hup:alfia

```

a      hup:NonPegawaiNegeriSipil ;
hup:agama "Islam" ;
hup:almamater "SMA" ;
hup:bekerja_di_bag hup:PRO ;
hup:jenis_kelamin "P" ;
hup:nama "Alfia Budiwati" ;
hup:nip "480 999 001" ;
hup:tahun_lulus "2005" ;
hup:tanggal_lahir "29/02/1988" ;
hup:tempat_lahir "Depok" ;
hup:tingkat_ijazah "SLTA" .

```

hup:Dani_Hamdani_S_STP

```

a      hup:Pelaksana ;
hup:agama "Islam" ;
hup:almamater "STPDN" ;
hup:bekerja_di_bag hup:PRO ;
hup:catatan_mutasi "Dinas Tata Kota" ;
hup:golongan "III/b" ;
hup:jenis_kelamin "L" ;
hup:nama "Dani Hamdani S.STP" ;
hup:nip "010 264 839" ;
hup:tahun_lulus "2003" ;
hup:tanggal_lahir "5/02/1980" ;
hup:tempat_lahir "Garut" ;
hup:tingkat_ijazah "S1" .

```

```
hup:retno
  a      hup:Pelaksana ;
  hup:agama "Islam" ;
  hup:almamater "SMA" ;
  hup:bekerja_di_bag hup:PRO ;
  hup:catatan_mutasi "Bag. Umum" ;
  hup:golongan "II/b" ;
  hup:jenis_kelamin "P" ;
  hup:nama "Retno Sustyaningsih" ;
  hup:nip "480 123 296" ;
  hup:tahun_lulus "1992" ;
  hup:tanggal_lahir "01/02/1974" ;
  hup:tempat_lahir "Jakarta" ;
  hup:tingkat_ijazah "SLTA" .

hup:erwin
  a      hup:Pelaksana ;
  hup:agama "Islam" ;
  hup:almamater "UI" ;
  hup:bekerja_di_bag hup:PRO ;
  hup:catatan_mutasi "Bag. Umum" ;
  hup:golongan "II/b" ;
  hup:jenis_kelamin "L" ;
  hup:nama "Erwin Narto" ;
  hup:nip "480 119 637" ;
  hup:tahun_lulus "2008" ;
  hup:tanggal_lahir "22/05/1979" ;
  hup:tempat_lahir "Depok" ;
  hup:tingkat_ijazah "S1" .

hup:ahmad
  a      hup:Pelaksana ;
  hup:agama "Islam" ;
  hup:almamater "STPDN" ;
  hup:bekerja_di_bag hup:PRO ;
  hup:catatan_mutasi "Bag. Umum" ;
  hup:golongan "III/a" ;
  hup:jenis_kelamin "L" ;
  hup:nama "Ahmad S.STP" ;
  hup:nip "010 267 122" ;
```

```

hup:tahun_lulus "2005" ;
hup:tanggal_lahir "27/04/1981" ;
hup:tempat_lahir "Teluk Betung" ;
hup:tingkat_ijazah "S1" .

hup:riswati
  a      hup:Pelaksana ;
hup:agama "Islam" ;
hup:almamater "SD" ;
hup:bekerja_di_bag hup:HUM ;
hup:catatan_mutasi "D D N" ;
hup:golongan "II/a" ;
hup:jenis_kelamin "P" ;
hup:nama "Riswati" ;
hup:nip "010 163 253" ;
hup:tahun_lulus "1971" ;
hup:tanggal_lahir "09/05/1958" ;
hup:tempat_lahir "Purwokerto" ;
hup:tingkat_ijazah "SD" .

```

Infrastruktur.n3

```

# Base: http://mybase
@prefix :      <#> .
@prefix hup:   <http://localhost:8080/portalHumasProtokol/ontology#> .
@prefix rdf123: <http://rdf123.umbc.edu/ns/> .

hup:handycam
  hup:digunakan_di hup:peliputan , hup:keprotokolan ;
hup:digunakan_oleh hup:kodir ;
hup:jumlah "4" ;
hup:nama_barang "Handycam" .

hup:motor_2
  hup:digunakan_oleh hup:kodir ;
hup:jumlah "1" ;
hup:nama_barang "Motor 2" .

hup:motor_1
  hup:digunakan_oleh hup:nasrullah ;

```



```
hup:jumlah "1" ;
hup:nama_barang "Motor 1" .

hup:komputer
  hup:digunakan_di hup:pembuatan_buku , hup:pengelolaan_internet , hup:peliputan ,
hup:pembuatan_advertorial , hup:pembuatan_kliping , hup:pelayanan_pengaduan ;
  hup:jumlah "14" ;
  hup:nama_barang "Komputer" .

hup:mobil_2
  hup:digunakan_di hup:peliputan , hup:talk_show ;
  hup:digunakan_oleh hup:djoko ;
  hup:jumlah "1" ;
  hup:nama_barang "Mobil 2" .

hup:kamera
  hup:digunakan_di hup:peliputan , hup:keprotokolalan ;
  hup:digunakan_oleh hup:kodir ;
  hup:jumlah "4" ;
  hup:nama_barang "Kamera Foto" .

hup:mobil_1
  hup:digunakan_oleh hup:Eko_Herwiyanto_AP ;
  hup:jumlah "1" ;
  hup:nama_barang "Mobil 1" .

hup:motor_4
  hup:digunakan_oleh hup:rusdianto ;
  hup:jumlah "1" ;
  hup:nama_barang "Motor 4" .

hup:motor_3
  hup:digunakan_oleh hup:wewen ;
  hup:jumlah "1" ;
  hup:nama_barang "Motor 3" .

hup:motor_5
  hup:digunakan_oleh hup:djoko ;
  hup:jumlah "1" ;
  hup:nama_barang "Motor 5" .
```

Peranan.n3

```

# Base: http://mybase
@prefix :      <#> .
@prefix hup:   <http://localhost:8080/portalHumasProtokol/ontology#> .
@prefix rdf:   <http://www.w3.org/1999/02/22-rdf-syntax-ns#> .
@prefix rdf123: <http://rdf123.umbc.edu/ns/> .

hup:FH5
    a          hup:Fungsi ;
    hup:deskripsi_per "Pengumpulan informasi kegiatan pemerintahan dan penyusunan
    rilis berita" ;
    hup:dimiliki_fung hup:HUM .

hup:FH6
    a          hup:Fungsi ;
    hup:deskripsi_per "Pengkoordinasian dan hubungan kerja dengan media massa
    kegiatan pemerintah kota" ;
    hup:dimiliki_fung hup:HUM .

hup:FH3
    a          hup:Fungsi ;
    hup:deskripsi_per "Penyiapan bahan petunjuk teknis dalam pengumpulan sumber
    informasi" ;
    hup:dimiliki_fung hup:HUM .

hup:FH4
    a          hup:Fungsi ;
    hup:deskripsi_per "Pengkoordinasian dalam pengendalian informasi" ;
    hup:dimiliki_fung hup:HUM .

hup:FH1
    a          hup:Fungsi ;
    hup:deskripsi_per "Penyusunan rencana kerja Sub Bagian Hubungan Masyarakat
    mengacu pada rencana kerja Bagian Hubungan Masyarakat dan Protokol" ;
    hup:dimiliki_fung hup:HUM .

hup:FH2
    a          hup:Fungsi ;
    hup:deskripsi_per "Pengelolaan data kehumasan sebagai bahan penyusunan kebijakan
    kehumasan pemerintah kota" ;

```

```

hup:dimiliki_fung hup:HUM .

hup:TU2
  a      hup:Tugas ;
  hup:deskripsi_per "Melaksanakan sebagian tugas bagian Hubungan Masyarakat dan
Protokol bidang keprotokolan" ;
  hup:dimiliki_tug hup:PRO .

hup:TU1
  a      hup:Tugas ;
  hup:deskripsi_per "Melaksanakan sebagian tugas bagian Hubungan Masyarakat dan
Protokol bidang kehumasan pemerintahan" ;
  hup:dimiliki_tug hup:HUM .

hup:FP3
  a      hup:Fungsi ;
  hup:deskripsi_per "Penyiapan bahan koordinasi penerimaan tamu-tamu Pemerintah
Daerah dan cinderamata" ;
  hup:dimiliki_fung hup:PRO .

hup:FP4
  a      hup:Fungsi ;
  hup:deskripsi_per "Penyiapan bahan koordinasi keprotokolan penerimaan pejabat
negara" ;
  hup:dimiliki_fung hup:PRO .

hup:FP5
  a      hup:Fungsi ;
  hup:deskripsi_per "Penyiapan sarana prasarana dan sumber daya korps musik
Pemerintah Daerah" ;
  hup:dimiliki_fung hup:PRO .

hup:FP6
  a      hup:Fungsi ;
  hup:deskripsi_per "Penyusunan agenda pemanduan kegiatan Walikota Wakil Walikota
dan Sekretaris Daerah" ;
  hup:dimiliki_fung hup:PRO .

hup:FP1
  a      hup:Fungsi ;
  hup:deskripsi_per "Penyusunan rencana kerja Sub Bagian Protokol mengacu pada
rencana strategi Setda" ;
  hup:dimiliki_fung hup:PRO .

```

```

hup:FH8
  a      hup:Fungsi ;
        hup:deskripsi per "Pelaksanaan tugas kedinasan lainnya yang diberikan oleh
Kepala Bagian sesuai dengan bidang tugasnya" ;
        hup:dimiliki_fung hup:HUM , hup:PRO .

hup:FP2
  a      hup:Fungsi ;
        hup:deskripsi per "Pengkoordinasian pelaksanaan penyiapan acara penyelenggaraan
upacara rapat dinas penerimaan tamu dan kegiatan resmi lainnya" ;
        hup:dimiliki_fung hup:PRO .

hup:FH7
  a      hup:Fungsi ;
        hup:deskripsi_per "Pengkoordinasian dan pelaksanaan penyusunan laporan dan
evaluasi kegiatan penyelenggaraan Sub Bagian Hubungan Masyarakat" ;
        hup:dimiliki_fung hup:HUM .

```

Kegiatan.n3

```

# Base: http://mybase
@prefix :      <#> .
@prefix hup:   <http://localhost:8080/portalHumasProtokol/ontology#> .
@prefix rdf:   <http://www.w3.org/1999/02/22-rdf-syntax-ns#> .
@prefix rdf123: <http://rdf123.umbc.edu/ns/> .

hup:pembuatan_buku
  a      hup:KegiatanInternal ;
        hup:beranggotakan hup:fathir , hup:nasrullah , hup:ade , hup:retno ;
        hup:deskripsi "Pembuatan Buku Sambutan Walikota dan Wakil" ;
        hup:dimiliki_oleh hup:PRO ;
        hup:dipimpin_keg hup:Dani_Hamdani_S_STP ;
        hup:jenis_kegiatan "harian" ;
        hup:menggunakan_keg hup:komputer ;
        hup:tempat "kantor protokol" .

hup:pengelolaan_internet
  a      hup:KegiatanInternal ;
        hup:beranggotakan hup:fathir , hup:nasrullah , hup:rusmini , hup:rusdianto ,
hup:wewen ;
        hup:deskripsi "Pengelolaan Media Internet" ;

```

```

hup:dimiliki_oleh hup:PRO ;
hup:dipimpin_keg hup:Dani_Hamdani_S_STP ;
hup:jenis_kegiatan "harian" ;
hup:menggunakan_keg hup:komputer ;
hup:tempat "kantor protokol" .

hup:peliputan
  a      hup:KegiatanEksternal ;
hup:beranggotakan hup:nasrullah , hup:kodir , hup:Andri_Setiawan , hup:djoko ;
hup:deskripsi "Peliputan Kegiatan" ;
hup:dimiliki_oleh hup:HUM ;
hup:dipimpin_keg hup:fahmi ;
hup:jenis_kegiatan "harian" ;
hup:menggunakan_keg hup:handycam , hup:komputer , hup:mobil_2 , hup:kamera ;
hup:tempat "tentative" .

hup:penyediaan_bacaan
  a      hup:KegiatanInternal ;
hup:beranggotakan hup:djoko , hup:riswati ;
hup:deskripsi "Penyediaan Bahan Bacaan" ;
hup:dimiliki_oleh hup:HUM ;
hup:dipimpin_keg hup:fahmi ;
hup:jenis_kegiatan "harian" ;
hup:tempat "kantor humas" .

hup:talk_show
  a      hup:KegiatanEksternal ;
hup:beranggotakan hup:nasrullah , hup:rusdianto , hup:shillawati ;
hup:deskripsi "Talk Show Radio" ;
hup:dimiliki_oleh hup:HUM ;
hup:dipimpin_keg hup:fahmi ;
hup:jenis_kegiatan "bulanan" ;
hup:menggunakan_keg hup:mobil_2 ;
hup:tempat "stasiun radio" .

hup:pembuatan_advertorial
  a      hup:KegiatanInternal ;
hup:beranggotakan hup:nasrullah , hup:rusdianto , hup:shillawati ;
hup:deskripsi "Pembuatan Advertorial Pembangunan Depok" ;
hup:dimiliki_oleh hup:HUM ;

```

```

hup:dipimpin_keg hup:fahmi ;
hup:jenis_kegiatan "mingguan" ;
hup:menggunakan_keg hup:komputer ;
hup:tempat "kantor humas" .

hup:pembuatan_kliping
  a      hup:KegiatanInternal ;
hup:beranggotakan hup:erwan , hup:rusmini , hup:hartikah , hup:Andri_Setiawan ;
hup:deskripsi "Pembuatan Kliping Berita" ;
hup:dimiliki_oleh hup:HUM ;
hup:dipimpin_keg hup:fahmi ;
hup:jenis_kegiatan "harian" ;
hup:menggunakan_keg hup:komputer ;
hup:tempat "kantor humas" .

hup:keprotokolan
  a      hup:KegiatanEksternal ;
hup:beranggotakan hup:fathir , hup:Fajar_Adi_Putra , hup:ade , hup:alfia ,
hup:retno , hup:erwin , hup:ahmad ;
hup:deskripsi "Keprotokolan Pemkot Depok" ;
hup:dimiliki_oleh hup:PRO ;
hup:dipimpin_keg hup:Dani_Hamdani_S_STP ;
hup:jenis_kegiatan "mingguan" ;
hup:menggunakan_keg hup:kamera , hup:handycam ;
hup:tempat "kantor walikota Depok" .

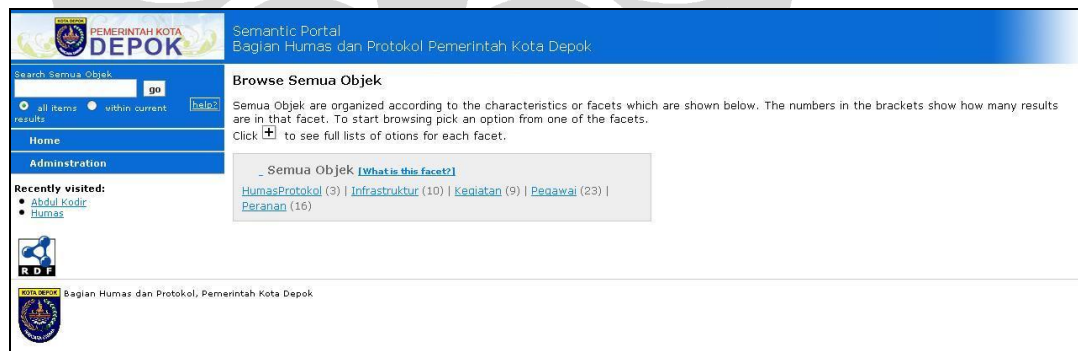
hup:pelayanan_pengaduan
  a      hup:KegiatanInternal ;
hup:beranggotakan hup:fathir , hup:nasrullah , hup:rusmini , hup:minar ,
hup:hartikah ;
hup:deskripsi "Pelayanan Pengaduan" ;
hup:dimiliki_oleh hup:HUM ;
hup:dipimpin_keg hup:fahmi ;
hup:jenis_kegiatan "harian" ;
hup:menggunakan_keg hup:komputer ;
hup:tempat "kantor humas" .

```

LAMPIRAN D – TAMPILAN PORTAL



Gambar D.1 Halaman Utama Portal



Gambar D.2 Halaman untuk *Filter* Semua Objek

Gambar D.3 Halaman untuk *Filter* Berdasarkan Pegawai

Gambar D.4 Halaman untuk *Filter* Berdasarkan Kegiatan

Gambar D.5 Halaman Pegawai

Semantic Portal
Bagian Humas dan Protokol Pemerintah Kota Depok

Search Pegawai: go
all items within current help?

Handycam
Jumlah : 4

Keterangan

Kegiatan	<ul style="list-style-type: none"> Keprotokolan Pemkot Depok Peliputan Kegiatan
Penanggung Jawab	<ul style="list-style-type: none"> Abdul Kodir

Recently visited:

- Minar Rosdiana
- Ade Hukmawan
- Humas Protokol
- Keprotokolan Pemkot Depok
- Handycam

Bagian Humas dan Protokol, Pemerintah Kota Depok

Gambar D.6 Halaman Infrastruktur

Semantic Portal
Bagian Humas dan Protokol Pemerintah Kota Depok

Search Pegawai: go
all items within current help?

Humas Protokol

Keterangan

Kepala	Eko Herwiranto AP
Daftar Kegiatan	<ul style="list-style-type: none"> Keprotokolan Pemkot Depok Pelayanan Penerimaan Peliputan Kegiatan Pembuatan Advertorial Pembangunan Depok Pembuatan Buku Sambutan Walikota dan Wakil Pembuatan Kliping Berita Pengelolaan Media Internet Penyediaan Bahan Bacaan Talk Show Radio
Tugas	<ul style="list-style-type: none"> Melaksanakan sebagian tugas bagian Hubungan Masyarakat dan Protokol bidang kehumasan pemerintahan Melaksanakan sebagian tugas bagian Hubungan Masyarakat dan Protokol bidang keprotokolan
Fungsi	<ul style="list-style-type: none"> Pelaksanaan tugas kedinasan lainnya yang diberikan oleh Kepala Bagian sesuai dengan bidang tugasnya Pengelolaan data kehumasan sebagai bahan penyusunan kebijakan kehumasan pemerintah kota Pengkoordinasian dalam penentuan informasi Pengkoordinasian dan hubungan kerja dengan media massa kegiatan pemerintahan kota Pengkoordinasian dan pelaksanaan penyusunan laporan dan evaluasi kegiatan penyelenggaraan Sub Bagian Hubungan Masyarakat Pengkoordinasian pelaksanaan penyiapan acara penyelenggaraan upacara rapat dinas penerimaan tamu dan kegiatan resmi lainnya Penyempulan informasi kegiatan pemerintahan dan penyusunan rilis berita Penyiapan bahan koordinasi keprotokolan penerimaan pejabat negara Penyiapan bahan koordinasi penerimaan tamu-tamu Pemerintah Daerah dan cinderamata Penyiapan bahan petunjuk teknis dalam penyempulan sumber informasi Penyiapan sarana prasarana dan sumber daya korps musik Pemerintah Daerah Penyusunan agenda pemanduan kegiatan Walikota Wakil Walikota dan Sekretaris Daerah Penyusunan rencana kerja Sub Bagian Hubungan Masyarakat mengacu pada rencana kerja Bagian Hubungan Masyarakat dan Protokol Penyusunan rencana kerja Sub Bagian Protokol mengacu pada rencana strategi Setda
Daftar Pegawai	<ul style="list-style-type: none"> Abdul Kodir Ade Hukmawan Ahmad S.STP Alfa Budiwati Andri Setiawan Dani Hamdani S.STP Disko Wahyudi Dra. Hartikah Eko Herwiranto AP Erwan Mindaza Erwin Narto Fajar Adi Putra Fahri Fajar Sidq S.STP Minar Rosdiana Muhammad Fahmi ST. M.Si Nasrullah R. Tranto Dwi Hardjono SH Retno Sustraningsih Riswati Rusdianto Rusmini Shillawati Weweh Sajali

Recently visited:

- Humas
- Muhammad Fahmi ST. M.Si
- Minar Rosdiana
- Ade Hukmawan
- Humas Protokol

Bagian Humas dan Protokol, Pemerintah Kota Depok

Gambar D.7 Halaman Humas Protokol

PEMERINTAH KOTA DEPOK Semantic Portal
Bagian Humas dan Protokol Pemerintah Kota Depok

Search Pegawai:

all items within current results

Home
Start Browsing Again
Last Search
View Raw
Visualize Links

Recently visited:

- Humas Protokol
- Keprotokolan Pemkot Depok
- Handycam
- Protokol
- Penyiapan bahan koordinasi keprotokolan penerimaan pejabat negara

Bagian Humas dan Protokol, Pemerintah Kota Depok

Fungsi
Deskripsi : Penyiapan bahan koordinasi keprotokolan penerimaan pejabat negara

Keterangan

Afiliasi

- Humas Protokol
- Protokol

Browse

- [Pegawai](#)
- [Kegiatan](#)
- [Semua Objek](#)

Other link

- [Situs Pemerintah Kota Depok](#)

Gambar D.8 Halaman Fungsi Penyiapan Bahan Koordinasi Keprotokolan Penerimaan Pejabat Negara

PEMERINTAH KOTA DEPOK Semantic Portal
Bagian Humas dan Protokol Pemerintah Kota Depok

Search Pegawai:

all items within current results

Home
Start Browsing Again
Last Search
View Raw
Visualize Links

Recently visited:

- [Muhammad Fahmi, ST, M.Si](#)
- [Minar Rosdiana](#)
- [Ade Hukmawan](#)
- [Humas Protokol](#)
- [Keprotokolan Pemkot Depok](#)

Bagian Humas dan Protokol, Pemerintah Kota Depok

Keprotokolan Pemkot Depok
Kegiatan Eksternal

Jenis Kegiatan : mingguan
Tempat : kantor walikota Depok

Keterangan

Afiliasi	<ul style="list-style-type: none"> • Humas Protokol • Protokol
Pimpinan	Dani Hamdani S,STP
Anggota	<ul style="list-style-type: none"> • Ade Hukmawan • Ahmad S,STP • Alfa Budiwati • Eriwi Narto • Fajar Adi Putra • Fathir Fajar Sidig S,STP • Retno Sustvaningsih
Menggunakan Infrastruktur	<ul style="list-style-type: none"> • Handycam • Kamera Foto

Browse

- [Pegawai](#)
- [Kegiatan](#)
- [Semua Objek](#)


Other link

- [Situs Pemerintah Kota Depok](#)

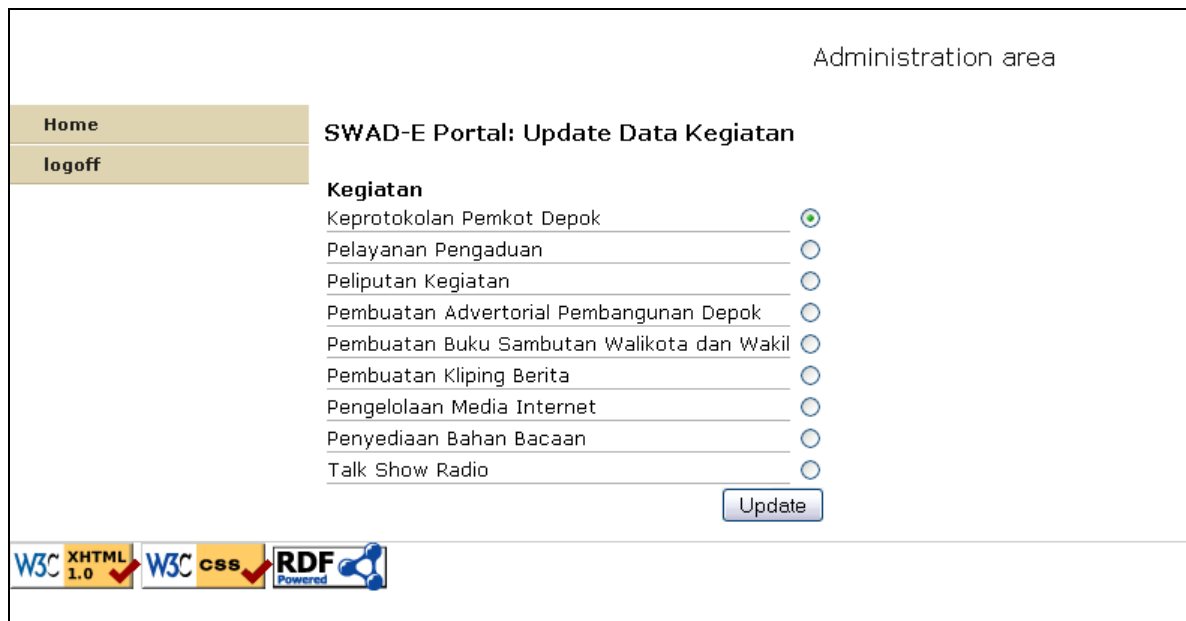
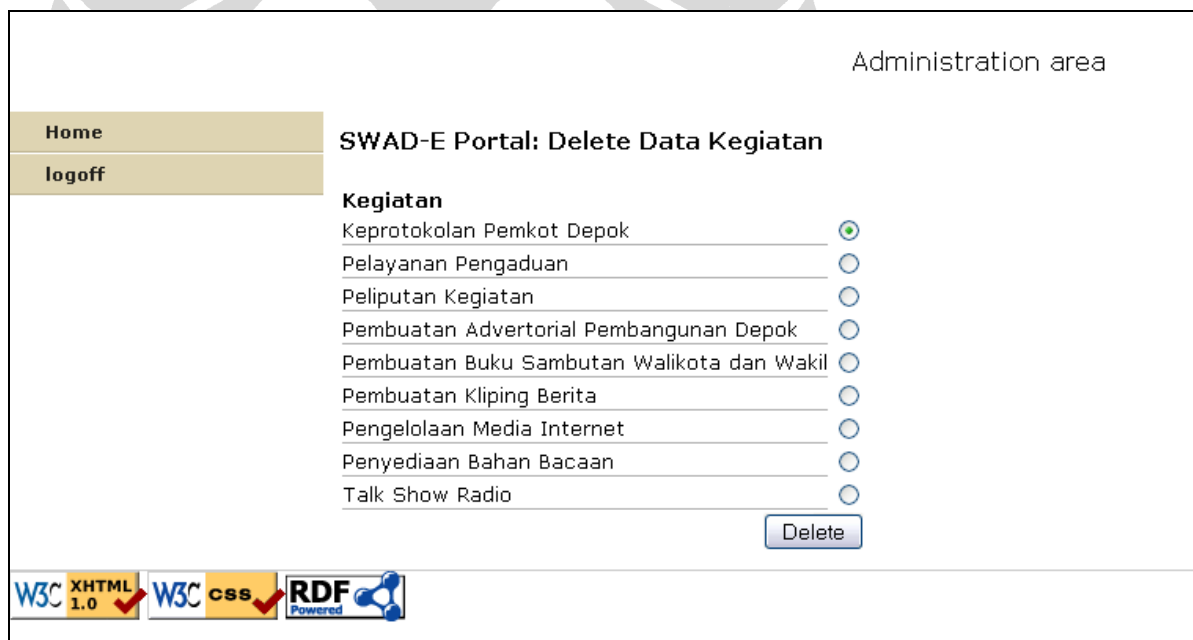
Gambar D.9 Halaman Kegiatan Keprotokolan Pemkot Depok

Administration area

Home	SWAD-E Portal: Add Data Kegiatan
Logout	<p>Nama Kegiatan (Deskripsi) <input type="text"/></p> <p>Jenis Kegiatan <input type="text" value="Harian"/> <input type="text" value="Internal"/></p> <p>Bagian <input type="text" value="Humas Protokol"/></p> <p>Tempat <input type="text"/></p> <p>Anggota</p> <p>Abdul Kodir <input type="checkbox"/></p> <p>Ade Hukmawan <input type="checkbox"/></p> <p>Ahmad S.STP <input type="checkbox"/></p> <p>Alfia Budiwati <input type="checkbox"/></p> <p>Andri Setiawan <input type="checkbox"/></p> <p>Dani Hamdani S.STP <input type="checkbox"/></p> <p>Djoko Wahyudi <input type="checkbox"/></p> <p>Dra. Hartikah <input type="checkbox"/></p> <p>Eko Herwiyanto AP <input type="checkbox"/></p> <p>Erwan Mindaya <input type="checkbox"/></p> <p>Erwin Narto <input type="checkbox"/></p> <p>Fajar Adi Putra <input type="checkbox"/></p> <p>Fathir Fajar Sidiq S.STP <input type="checkbox"/></p> <p>Minar Rosdiana <input type="checkbox"/></p> <p>Muhammad Fahmi ST. M.Si <input type="checkbox"/></p> <p>Nasrullah <input type="checkbox"/></p> <p>R. Tranto Dwi Hardjono SH <input type="checkbox"/></p> <p>Retno Sustyaningsih <input type="checkbox"/></p> <p>Riswati <input type="checkbox"/></p> <p>Rusdianto <input type="checkbox"/></p> <p>Rusmini <input type="checkbox"/></p> <p>Shillawati <input type="checkbox"/></p> <p>Wewen Sajali <input type="checkbox"/></p> <p>Infrastruktur</p> <p>Handycam <input type="checkbox"/></p> <p>Kamera Foto <input type="checkbox"/></p> <p>Komputer <input type="checkbox"/></p> <p>Mobil 1 <input type="checkbox"/></p> <p>Mobil 2 <input type="checkbox"/></p> <p>Motor 1 <input type="checkbox"/></p> <p>Motor 2 <input type="checkbox"/></p> <p>Motor 3 <input type="checkbox"/></p> <p>Motor 4 <input type="checkbox"/></p> <p>Motor 5 <input type="checkbox"/></p> <p style="text-align: right;"><input type="button" value="Submit"/></p>



Gambar D.10 Add Data Kegiatan

Gambar D.11 Halaman *Update Kegiatan*Gambar D.12 Halaman *Delete Kegiatan*