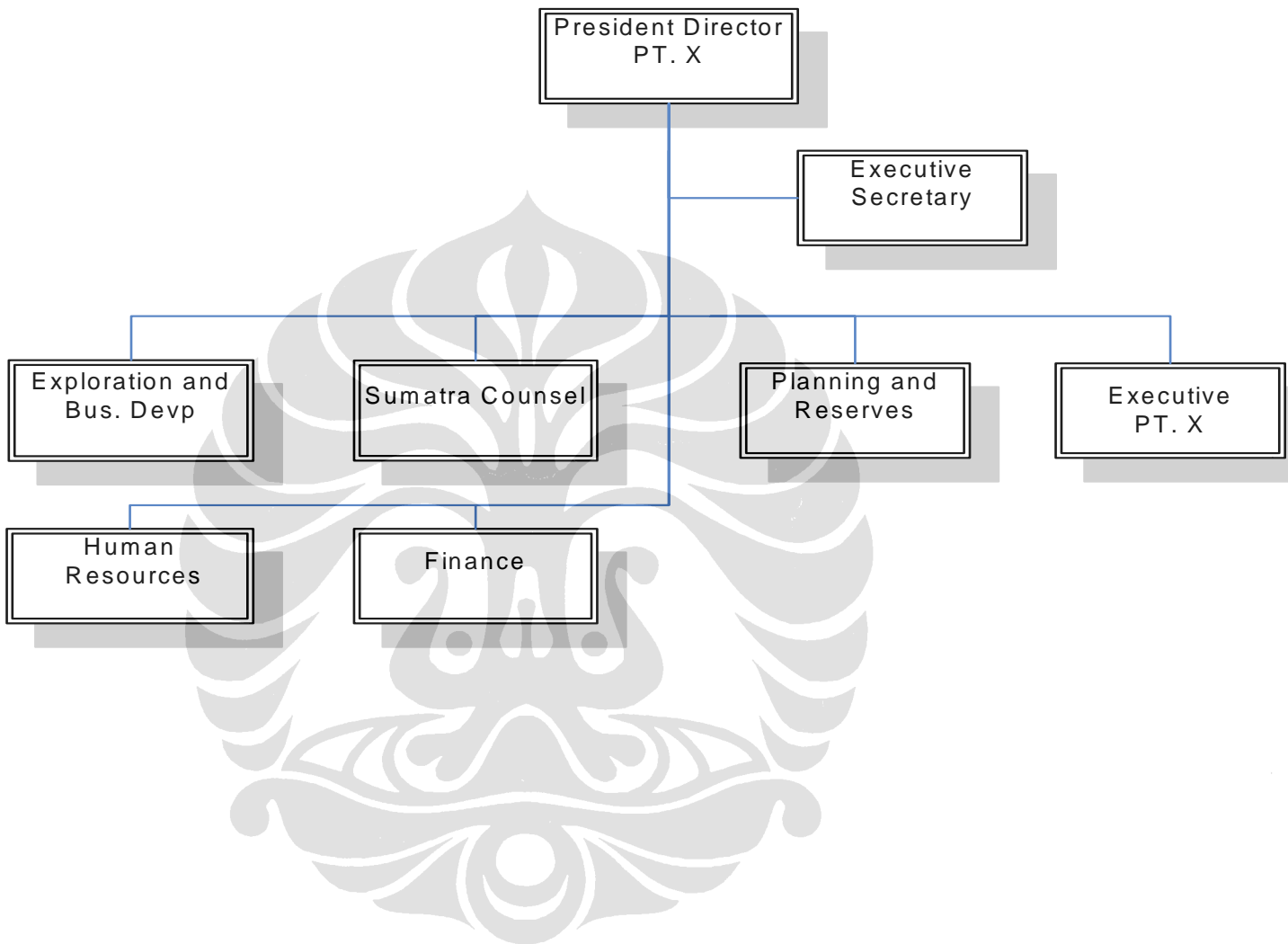




## Lampiran 1 : Struktur Organisasi PT. X

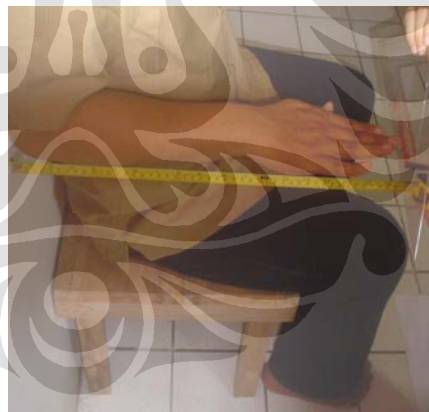


## Lampiran 2 : Gambar Cara Pengukuran Antropometri Tubuh Karyawan

### 1. Tinggi Bahu Duduk



### 2. Tinggi Siku Duduk



### 3. Panjang Dari Pantat Sampai Lutut Bagian Belakang



4. Tinggi Lutut Bagian Belakang



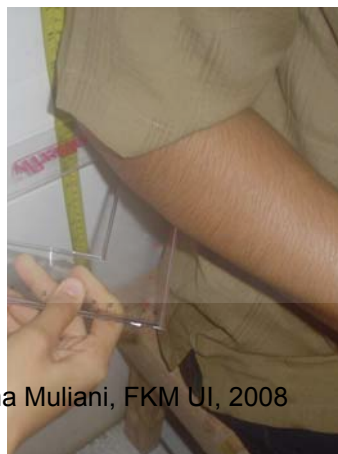
5. Lebar Bahu Atas



6. Lebar Pinggul



7. Jarak Dari Siku Ke Ujung Jari



**Lampiran 3 : Pengukuran Data Antropometri Sattis Duduk Pria di PT. X**

No	Sampel	Dimensi (cm)						
		TBD	TSD	PP	TPL	LB	LP	PLB
1	1	61	27	45	44.5	44	42	48
2	2	58.5	21.5	50	44.5	44.5	40	47
3	3	61.5	29	42	39	42	36.5	42.5
4	4	50.5	16.5	45	37.5	37.5	31	43
5	5	55	19	47	40	42	33	45
6	6	57	21.5	48	41.5	47	38	46.5
7	7	58.5	23.5	49	42	42	35	45.5
8	8	59	25	49	39.5	47	43	45
9	9	62	24	48	40.5	44	40.5	45.5
10	10	60	24	53.5	44.5	40.5	36	45.5
11	11	55.5	18	50	41.5	43	40	44.4
12	12	55.5	19.5	48	42.5	42	36.5	48
13	13	59	23	47	41	41.5	40	44
14	14	53	20	45.5	38.5	41.5	34.5	43
15	15	57.5	21.5	48	44	41.5	37	49
16	16	55	20.5	47	43	40	33	44.5
17	17	49.5	19	46	43	38	32	45
18	18	51	20	46.5	41	39	35.5	46
19	19	54	19.5	48.5	41.5	40	34.5	46
20	20	58	21.5	46.5	44.5	40	32	44
21	21	63	27	49	46.5	46	36.5	50
22	22	61.5	25	51	49	49	40	49
23	23	60	21	49	44	39	35	47.5
24	24	50.5	18.5	42	43	44	36.5	43.5
25	25	57	22.5	48.5	41.5	42	35	46
26	26	54	17.5	50	41	46	34.5	47
27	27	58	23	50	45	44	35	47.5
28	28	56.5	21.5	49	43	40.5	34.5	44
29	29	60	28	49	42	41.5	36	44.5
30	30	56.5	21	47.5	45.5	45	32.5	48
31	31	54	18.5	46.5	42	44	40	46.5
32	32	56.5	22	45.5	42.5	43	35.5	46
33	33	56	28.5	47.5	42.5	41.5	38.5	47.5
34	34	57.5	26	47.5	39	47	40.5	45
35	35	64	25.5	53	50	47	38	53

**Lampiran 4 : Pengukuran Data Antropometri Statis Duduk Wanita di PT. X**

No.	Sampel	Dimensi (cm)						
		TBD	TSD	PP	TPL	LB	LP	PLB
1	1	54	24	45	41.5	43.5	44.5	47
2	2	53	18	50	44.5	39	38	43
3	3	54.5	21.5	47	43	40	41	44
4	4	53	21.5	47.5	39.5	39	36	43
5	5	53.5	25.5	39.5	38.5	36	33.5	42
6	6	54	20	47.6	38.3	34.5	31	45.5
7	7	50	18.5	48.5	39.2	35.5	32	40
8	8	49	17.6	46.5	40	35	30	45
9	9	51	18	46	39	38.5	36	45.5
10	10	52.5	19.5	44	36	39	35	43.5
11	11	51.5	20.5	46.5	38	38	38	44.4
12	12	54.5	24	49.5	39	44	39.5	45
13	13	54	22	44.5	35.5	35	31.5	42
14	14	51	19.5	46.5	37.5	42.5	39	43
15	15	49.5	17.5	43.5	35.5	38.5	36.5	49
16	16	49	21	42.5	36.5	36.5	32.5	44.5
17	17	50.5	17.5	43.5	36	35	35.5	42.5
18	18	55	21.5	45	34	35	37	45
19	19	56	20.5	46.5	38	38	39.5	44
20	20	46	20	49	33.5	41	38	43.5
21	21	57	27.5	47	44	42	38.5	48
22	22	58	23.5	44.5	47	36.5	34	46
23	23	51	18.5	42.5	36.5	35	30	42.5
24	24	51	21.5	44	35.5	34.5	29.5	44.5
25	25	54	22.5	50.5	39.5	37	37	45
26	26	58	22	51	41	37.5	34	44.5
27	27	60.5	29	53	48.5	46.5	45.5	49
28	28	51.5	20	44	39.5	37.5	36.5	43
29	29	61	29	55.5	47	47	43.5	48.5
30	30	69.5	36.5	61.5	55	51	48	50

## Lampiran 5 : Hasil Pengolahan Data

### 1. Hasil Pengolahan Data

#### A. Wanita

##### Statistics

		Tinggi Bahu Duduk	Tinggi Siku Duduk	Jarak dari lipat lutut ke pantat	Tinggi lipat lutut	Lebar Bahu	Lebar panggul	Jarak dari siku ke ujung jari
N	Valid	30	30	30	30	30	30	30
	Missing	5	5	5	5	5	5	5
Mean		53.7667	21.9367	47.0700	39.8833	38.9333	36.6833	44.7467
Median		53.2500	21.2500	46.5000	39.0000	38.0000	36.5000	44.5000
Mode		51.00 <sup>a</sup>	21.50	46.50	35.50 <sup>a</sup>	35.00	38.00	43.00 <sup>a</sup>
Std. Deviation		4.51765	4.18738	4.31302	4.77646	4.15587	4.66551	2.35573
Variance		20.409	17.534	18.602	22.815	17.271	21.767	5.549
Range		23.50	19.00	22.00	21.50	16.50	18.50	10.00
Minimum		46.00	17.50	39.50	33.50	34.50	29.50	40.00
Maximum		69.50	36.50	61.50	55.00	51.00	48.00	50.00
Percentiles	5	47.6500	17.5000	41.1500	33.7750	34.5000	29.7750	41.1000
	95	64.8250	32.3750	58.2000	51.4250	48.8000	46.6250	49.4500

a. Multiple modes exist. The smallest value is shown

#### B. Pria

##### Statistics

		Tinggi Bahu Duduk	Tinggi Siku Duduk	Jarak dari lipat lutut ke pantat	Tinggi lipat lutut	Lebar Bahu	Lebar panggul	Jarak dari siku ke ujung jari
N	Valid	35	35	35	35	35	35	35
	Missing	0	0	0	0	0	0	0
Mean		57.0286	22.2571	47.8429	42.59	42.7571	36.5143	46.0686
Median		57.0000	21.5000	48.0000	42.50	42.0000	36.0000	46.0000
Mode		54.00 <sup>a</sup>	21.50	49.00	42 <sup>a</sup>	41.50 <sup>a</sup>	40.00	45.00 <sup>a</sup>
Std. Deviation		3.60747	3.29298	2.44279	2.697	2.81898	3.03530	2.19890
Variance		13.014	10.844	5.967	7.272	7.947	9.213	4.835
Range		14.50	12.50	11.50	13	11.50	12.00	10.50
Minimum		49.50	16.50	42.00	38	37.50	31.00	42.50
Maximum		64.00	29.00	53.50	50	49.00	43.00	53.00
Percentiles	5	50.3000	17.3000	42.0000	38.30	37.9000	31.8000	42.9000
	95	63.2000	28.6000	53.1000	49.20	47.4000	42.2000	50.6000

a. Multiple modes exist. The smallest value is shown